



Motorola C168 Front Panel Replacement

Instructs user on how to properly remove the front panel of the phone. The front panel is a single component containing the keypad, speaker, and screen protector.

Written By: Christopher Wu





TOOLS:

- [T4 Torx Screwdriver](#) (1)
 - [Spudger](#) (1)
-

Step 1 — Battery



- Turn the phone so its back is facing you.
- Press the release button on the back cover, while simultaneously pulling the cover down.
- Remove the back cover.

Step 2



- Pinch the sides of the bottom of the battery and pull upward.

Step 3 — SIM Card



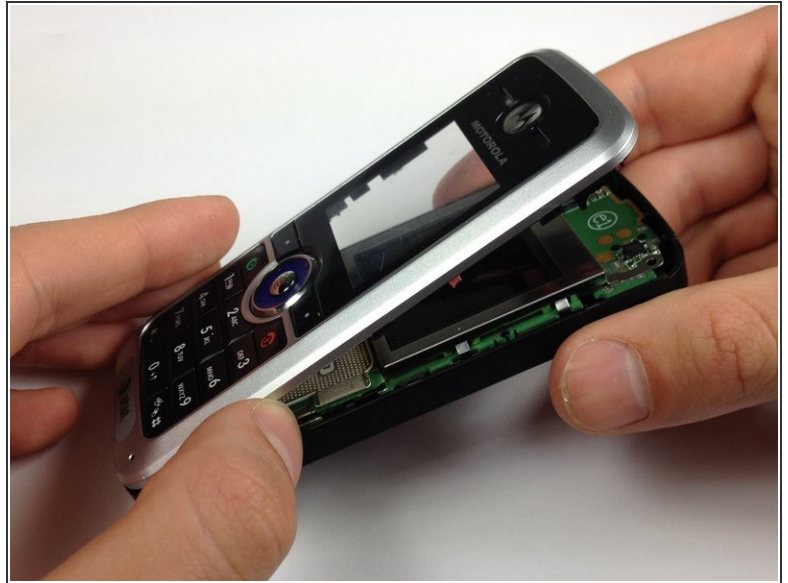
- Press and slide the SIM card down.
- Remove the SIM card.

Step 4 — Front Panel



- Orient the phone so its back is facing you.
- Using a Torx T-4 screwdriver, carefully remove the 4 screws located at the corners of the phone.
- ⓘ Note: If you are using iFixit's screwdriver toolkit, look for the smallest T-screwbit.

Step 5



- Lodge a [spudger](#) in between the front panel and the main frame of the phone.
- Using a good amount of torque, pry the front panel from the phone.

To reassemble your device, follow these instructions in reverse order.