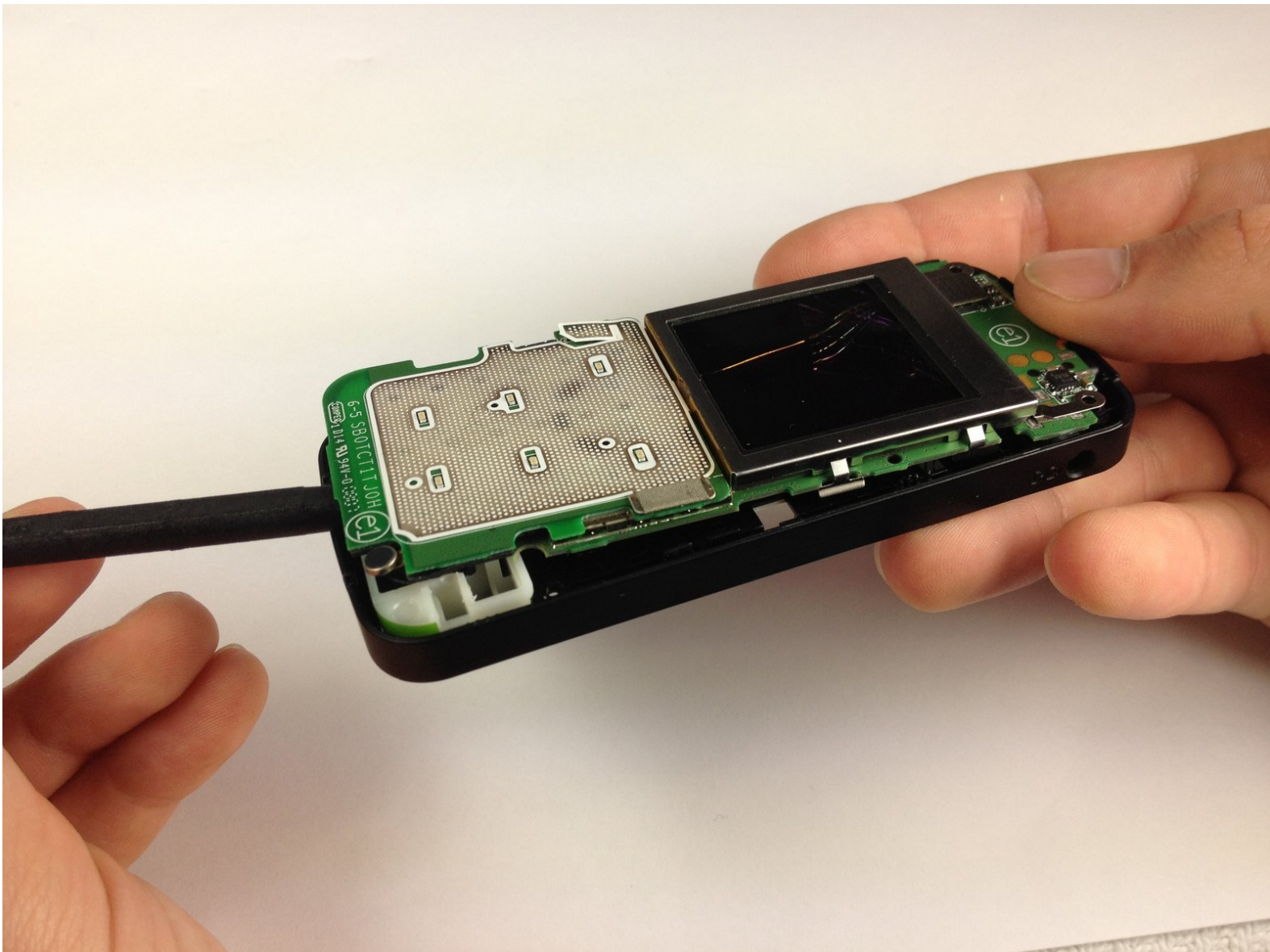




# Motorola C168 Screen Replacement

Instructs user how to install a new screen into the phone.

Written By: Christopher Wu





## TOOLS:

- [Spudger](#) (1)
  - [T4 Torx Screwdriver](#) (1)
-

## Step 1 — Battery



- Turn the phone so its back is facing you.
- Press the release button on the back cover, while simultaneously pulling the cover down.
- Remove the back cover.

## Step 2



- Pinch the sides of the bottom of the battery and pull upward.

## Step 3 — SIM Card



- Press and slide the SIM card down.
- Remove the SIM card.

## Step 4 — Front Panel



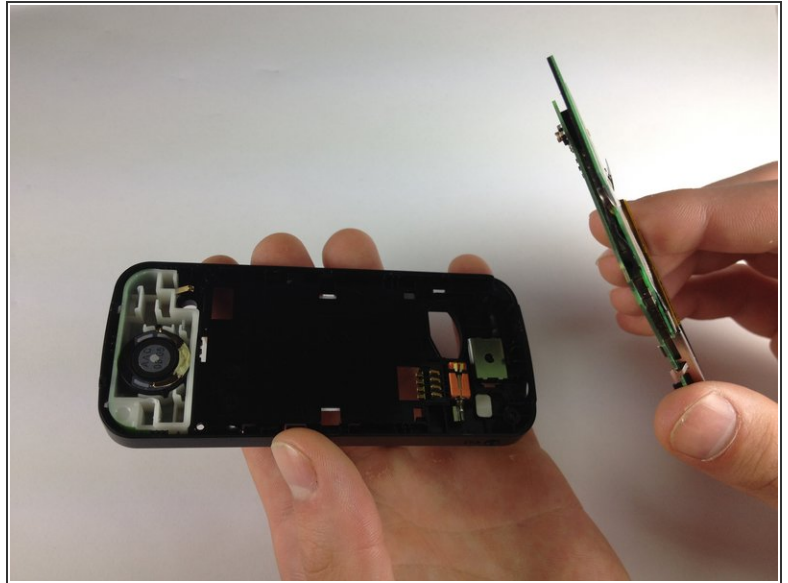
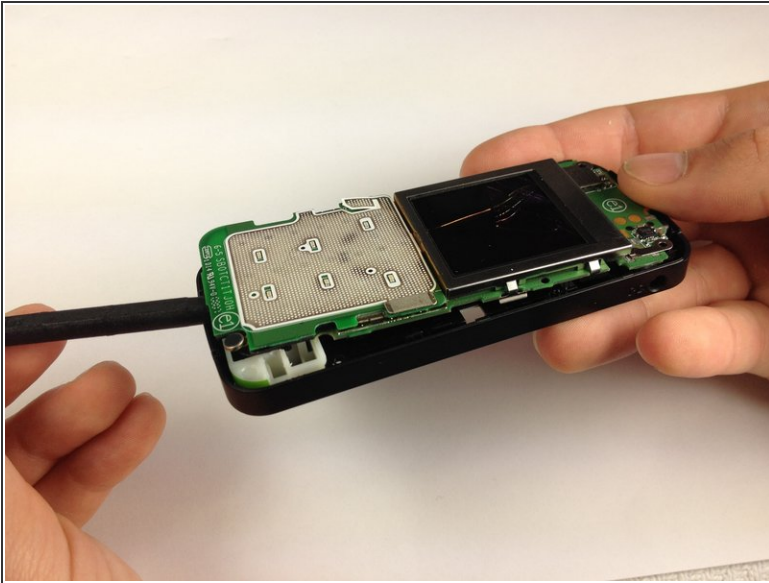
- Orient the phone so its back is facing you.
- Using a Torx T-4 screwdriver, carefully remove the 4 screws located at the corners of the phone.
- ⓘ Note: If you are using iFixit's screwdriver toolkit, look for the smallest T-screwbit.


## Step 5



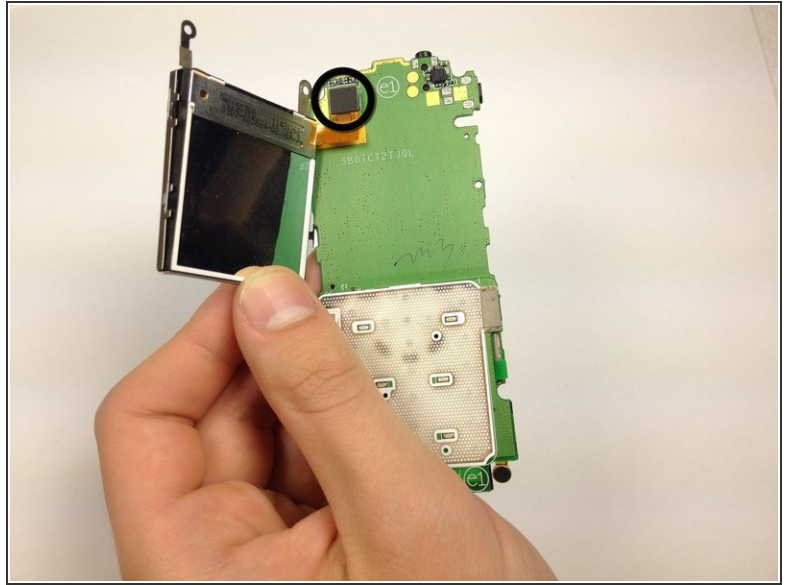
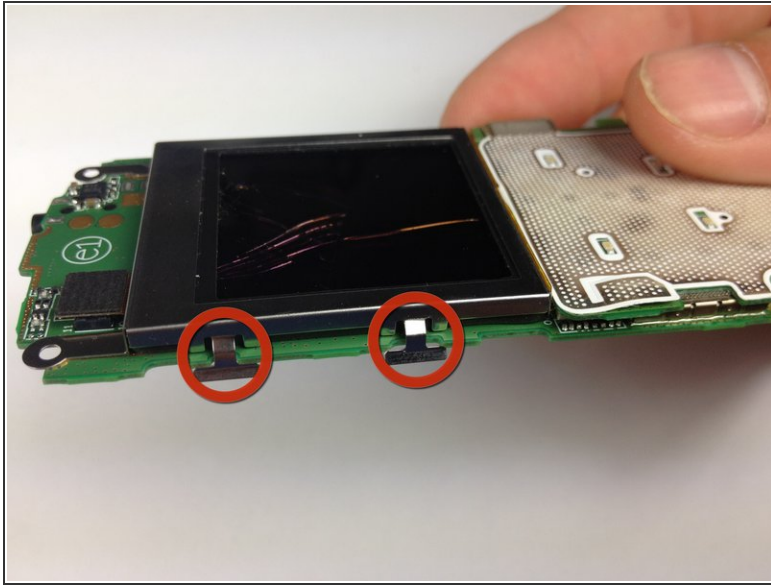
- Lodge a [spudger](#) in between the front panel and the main frame of the phone.
- Using a good amount of torque, pry the front panel from the phone.

## Step 6 — Screen



- Turn the phone to its natural orientation.
  - Insert a [spudger](#) at the bottom of the phone, between the phone's frame and the circuit board.
  - Pry the circuit board from the frame.
-  Note: Prying away the board takes more force than you would expect.

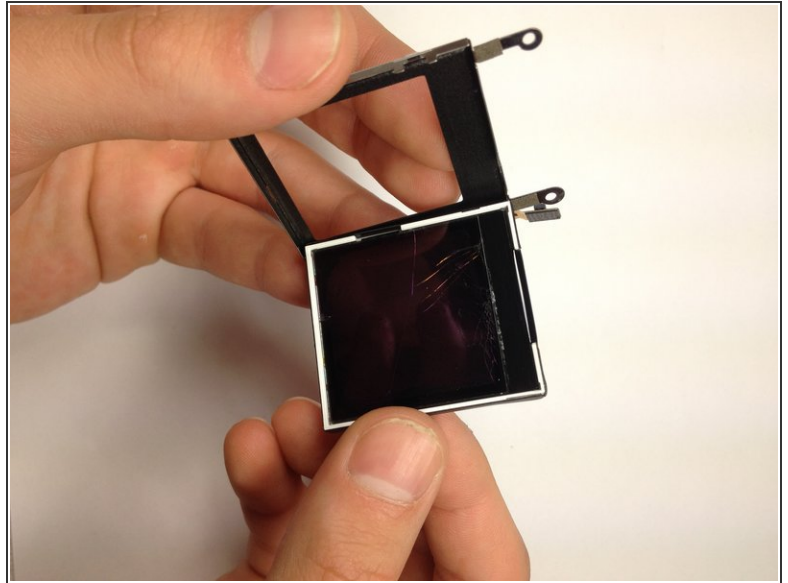
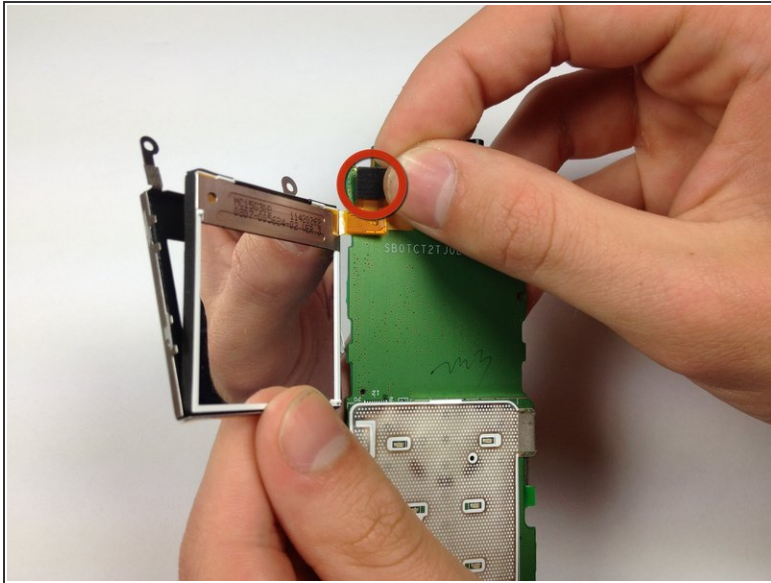
## Step 7



- Bend the screen clamps outward so they are no longer underneath the circuit board.
- Pull the screen encasing away from the circuit board.

⚠ Caution: The screen-to-phone interface will still be connected.

## Step 8



- Unplug the screen-to-phone interface.
- Remove the screen from its encasing by pushing it out.

To reassemble your device, follow these instructions in reverse order.