



# Motorola California Mobile Phone Keypad Guard Replacement

This guide is a walk-through of how to replace the piece of plastic that covers the phone's keypad.

Written By: Andrew Caddell



---

## INTRODUCTION

Use this guide to replace the keypad guard on the front of the phone.



### TOOLS:

- [Phillips #00 Screwdriver](#) (1)
-

## Step 1 — Keypad Guard



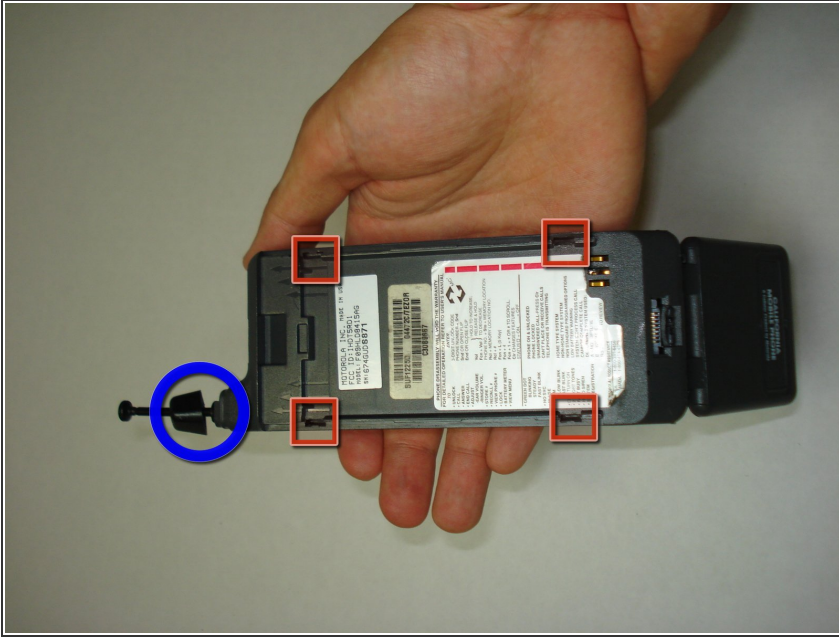
- Remove the battery by sliding it down the rails to which it is connected.

## Step 2



- Find a flat head or Phillips head screwdriver.
- Insert the screwdriver into the holes in the plastic rod connecting the keypad guard to the rear casing.
- Use the screwdriver to push the rods towards each other until they click out of their locked position.
- ⓘ Note: This may require a large amount of force.

### Step 3



- Slide off the antenna guard.
- Locate the four clips on the exterior of the rear casing.
- Simultaneously push the clips outward while lifting the rear casing and keyguard away from the front casing.
- Remove the old key guard from the rear casing by taking it out of its position.

### Step 4



- Locate the circular extensions protruding from the top of your new key guard.
- Push inwards on the small tabs on the side of the protrusions until they are no longer sticking out.
- ⓘ Note: This may require a strong push.



## Step 5



- Put the back case down on a table in front of you with the bottom of the phone close to you.
- Put the key guard's tabs into the corresponding tabs on the bottom of the rear casing.
- While the key guard's tabs are in the rear casing, put the rear casing's tabs into the bottom of the front casing.

## Step 6



- To join the 3 pieces together, push the front and rear casing together so that the clips on the front casing lock into the holes on the rear casing.
- Slide the antenna guard on.

## Step 7



- Locate the holes that connect the keypad guard to the rear casing.
  - Find a thin and sturdy screwdriver.
  - Insert the screwdriver into the holes in the plastic rod connecting the keypad guard to the rear casing.
  - Use the screwdriver to push the rods away from each other until they click into a locked position.
- i* Note: This may require a large amount of force.
- i* Note: During usage, the keypad guard will not snap into place if it has not been locked into position.

To reassemble your device, follow these instructions in reverse order.