



Motorola California Mobile Phone Motherboard Replacement

This guide will walk through replacement of the California Mobile Phone's Motherboard.

Written By: Andrew Lam



INTRODUCTION

Motherboard installation requires a teardown of the device.



TOOLS:

- [Phillips #00 Screwdriver](#) (1)
-

Step 1 — Motorola California Mobile Phone Teardown



- Remove the battery by sliding it down the rails to which it is connected.

Step 2



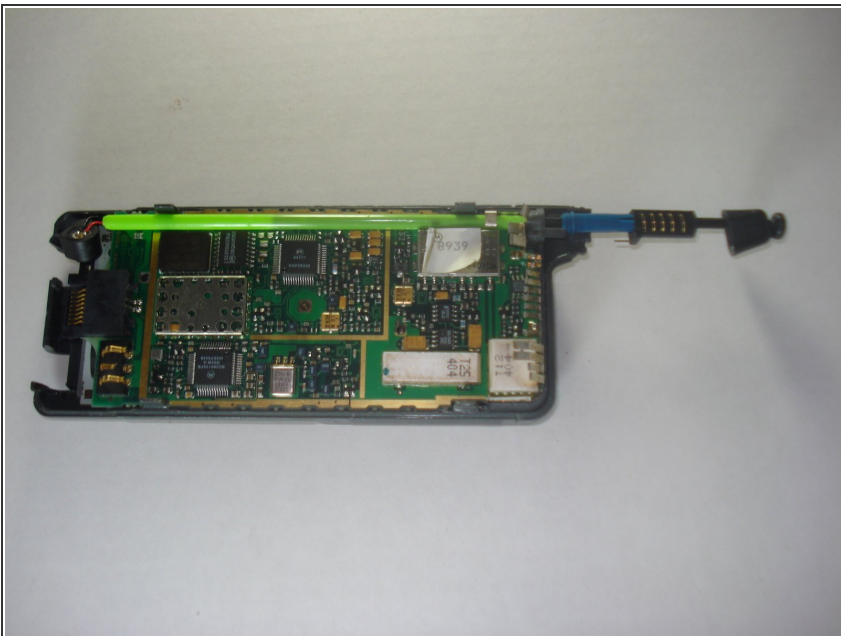
- Find a flat head or Phillips head screwdriver.
 - Insert the screwdriver into the holes in the plastic rod connecting the key pad guard to the rear casing.
 - Use the screwdriver to push the rods towards each other until they click out of their locked position.
- i** Note: This may require a large amount of force.

Step 3



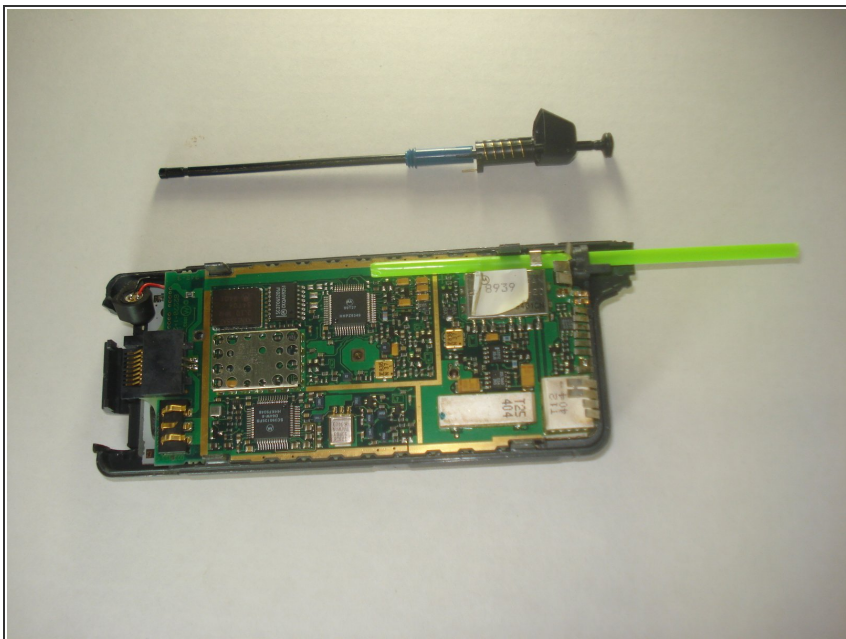
- Slide off the antenna guard and locate the four clips on the exterior of the rear casing.
- Simultaneously push the clips outward while lifting the rear casing and keyguard away from the front casing.
- Remove the key guard from the rear casing by taking it out of its position.

Step 4



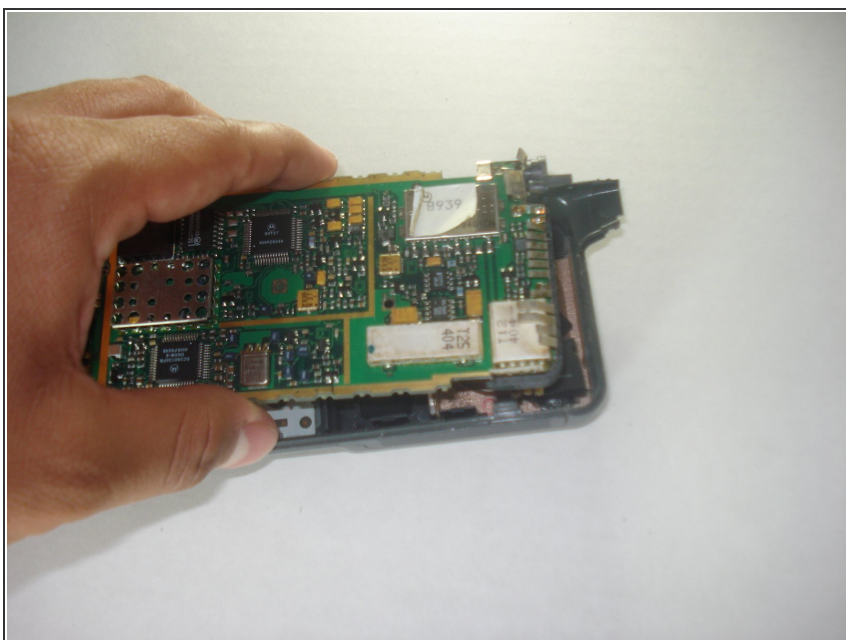
- Locate and unplug the black component of the antenna from the motherboard.
- Under the black component should be a blue component. Unscrew this component in order to free the antenna.

Step 5



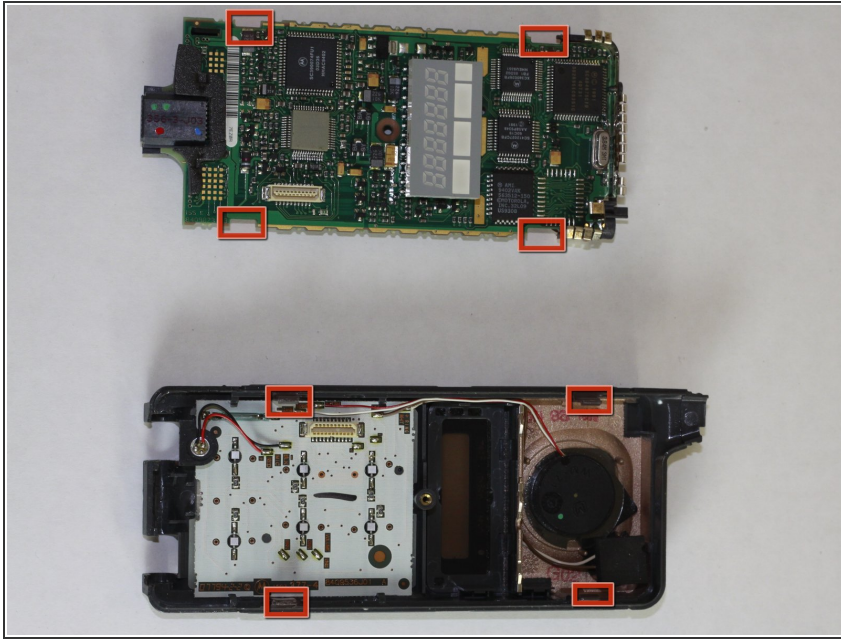
- Slide the antenna out of the green tubing and slide the green tubing out of its corresponding hole on the motherboard.

Step 6



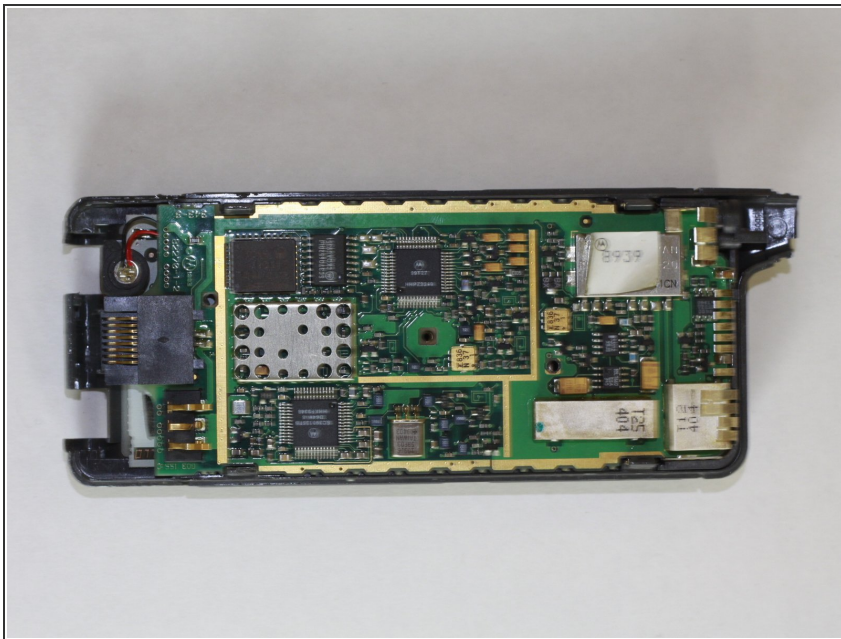
- Lift the motherboard out of its location in the front casing.
- ⚠ Do this slowly and gently so that none of the motherboard's components are damaged.

Step 7 — Motherboard



- With your new motherboard, hold the LCD side of the motherboard face down. Align the four clips on the front casing with the four notches on the motherboard.
- While doing so, insert the LCD into the compartment in the front casing.

Step 8



- Press firmly on the motherboard until it is snug inside the casing.

To reassemble your device, follow these instructions in reverse order.