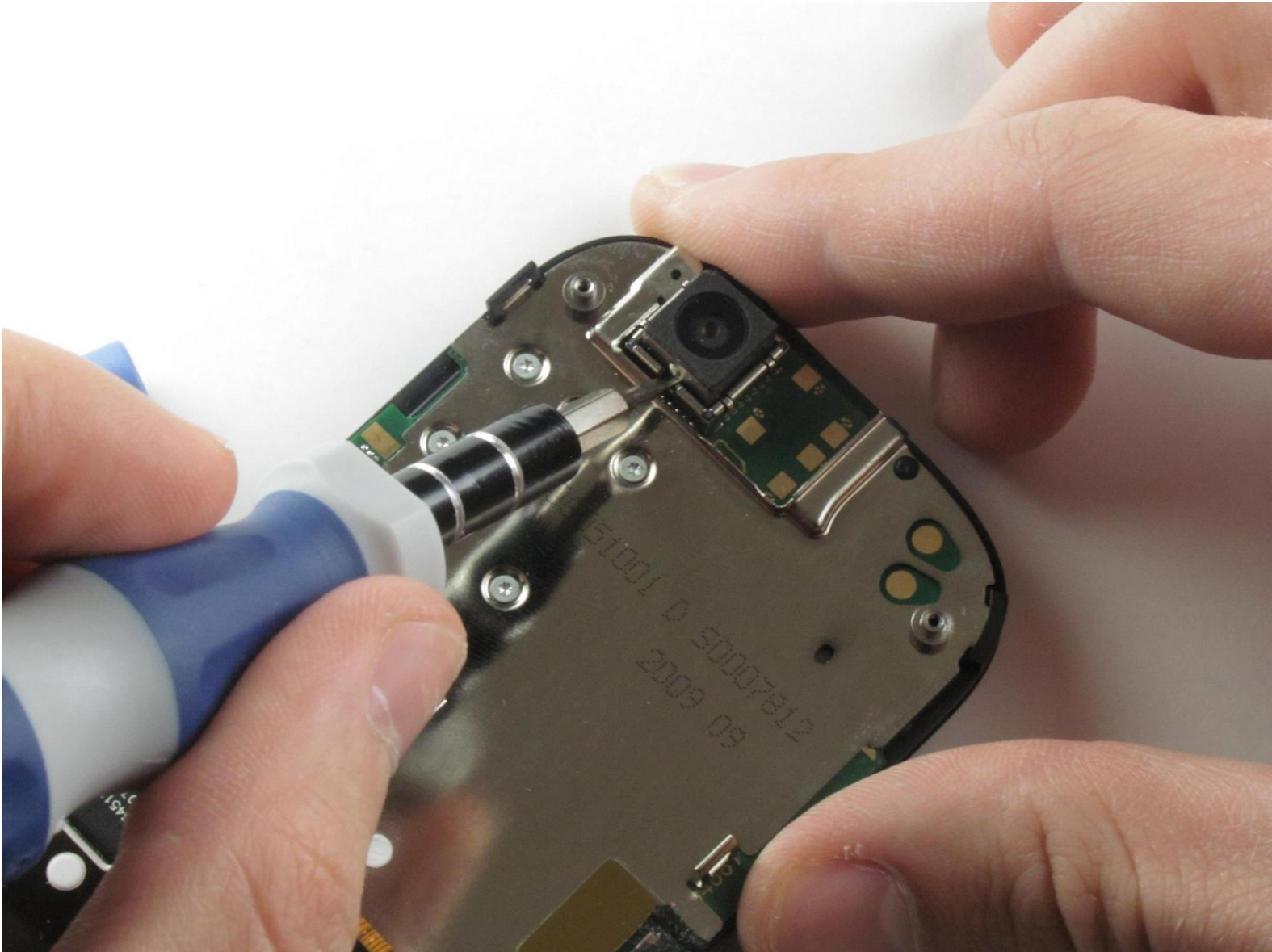




Motorola Cliq Camera Replacement

Use this guide to replace the camera in your Motorola Cliq.

Written By: Tony Tran



INTRODUCTION

This guide explains how to replace a damaged or broken camera on the Motorola Cliq. The camera is very fragile, so take care getting it out.

TOOLS:

- [iFixit Opening Tools](#) (1)
 - [1.5 mm Flathead Screwdriver](#) (1)
 - [Spudger](#) (1)
 - [T4 Torx Screwdriver](#) (1)
-

Step 1 — Battery



- Turning over your phone, place two fingers on the back cover and apply pressure away from the camera to slide the back cover off.

Step 2



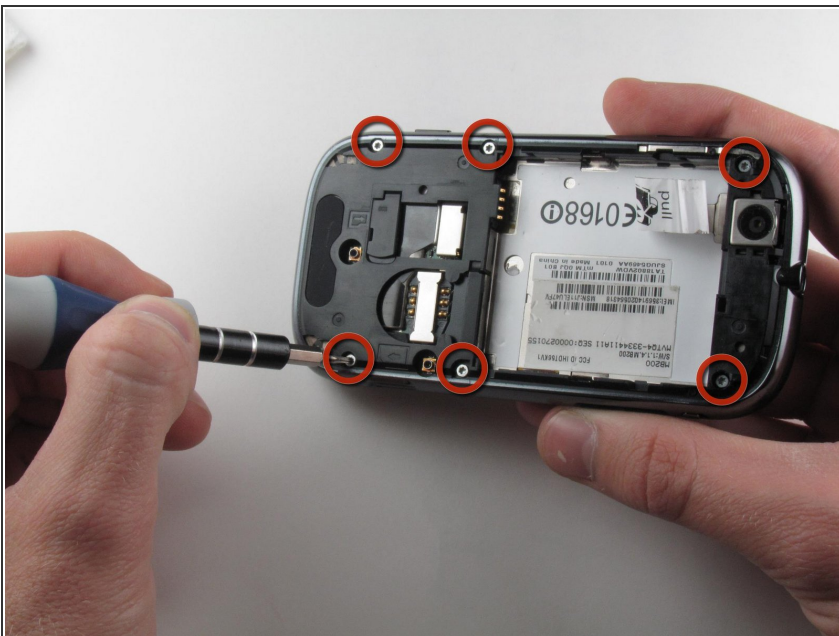
- Pinch the battery pull tab located below the camera, pull it upwards, and remove the battery.
 - ❗ The pull tab may be tucked under the battery.

Step 3 — Rear Casing



- Wedge a plastic opening tool behind the panel covering the camera, pry it up, and remove it using your fingers.
- ⓘ The panel is held down by adhesive and may require you to wedge and pry the right side of the panel before it can be easily removed.

Step 4




- Remove the six 4.0 mm T4 Torx screws which line the edge of the back of the phone.

Step 5



- Turn the phone over and slide out the keyboard.
- Wedge a plastic opening tool where the keyboard meets the back casing of the phone next to the headphone jack.
- Carefully pry open the back casing along the keyboard's edge until at least two corners of the back casing are separated from the keyboard.

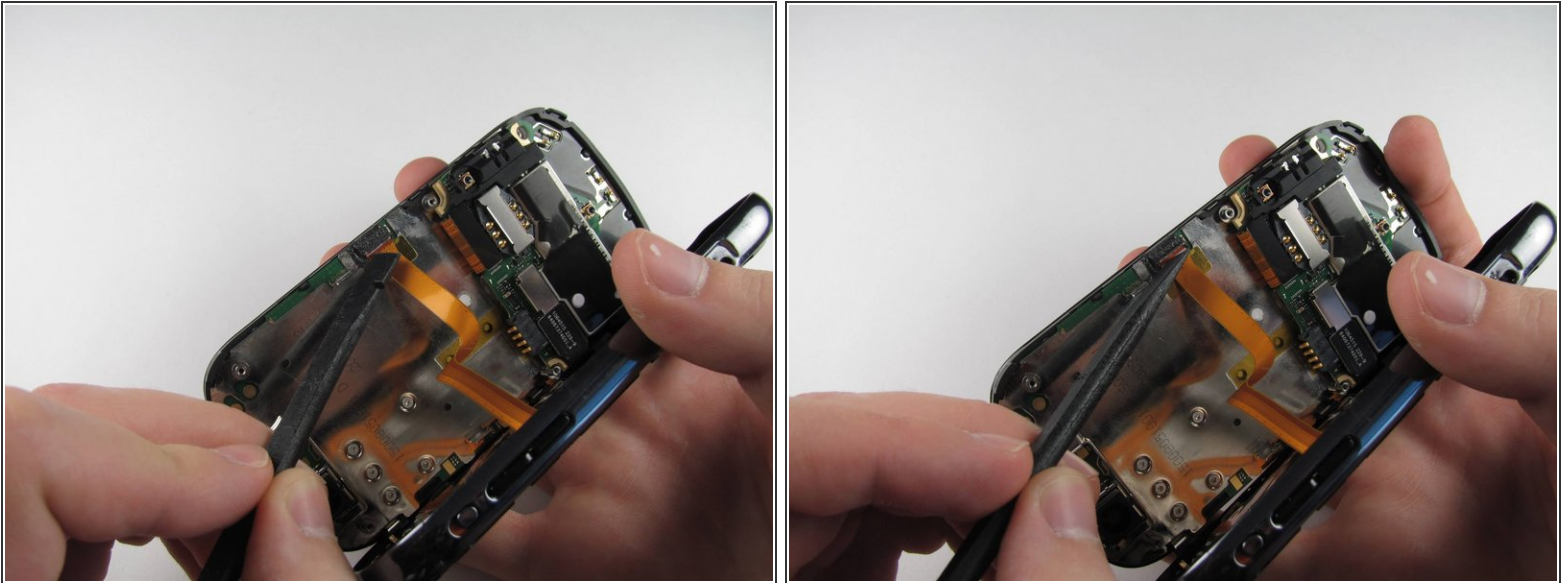
 Do not fully separate the rear panel from the phone. A cable is connecting the two parts together.

Step 6




- Carefully separate the back casing from the rest of the phone.

Step 7



- Gently pry ZIF connector upwards using the flat end of a spudger tool.

 The ZIF connector is glued down. Be gentle! Ripping it off or breaking it will make your phone inoperable.

 You may need adhesive to keep your power cable in place when reassembling your phone.

Step 8



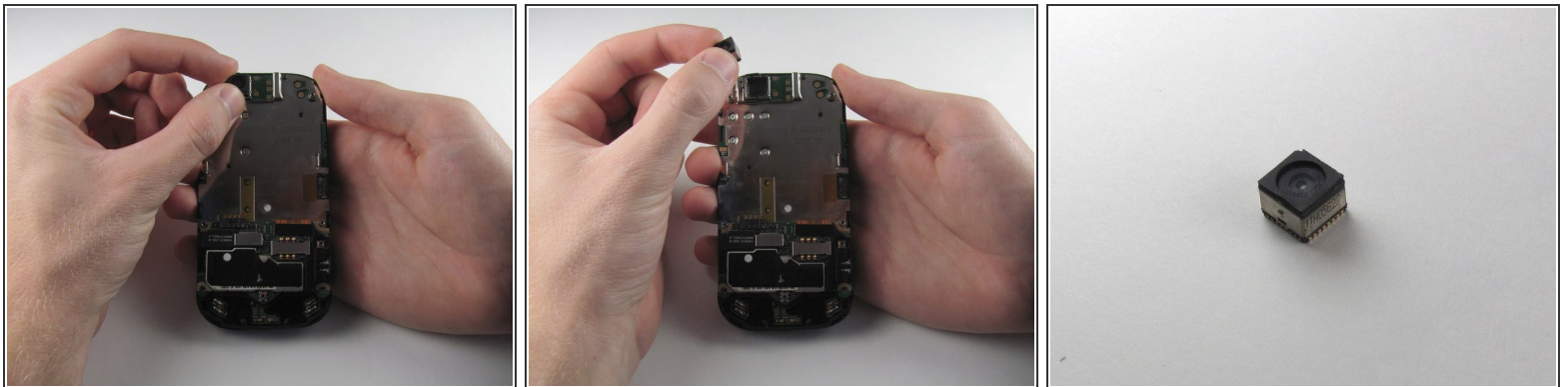
- Press your thumb against the orange power cable and pull it down slowly to disconnect the power cable from the bottom of the keyboard.
- The rear casing and the rest of the phone should now be completely separated.

Step 9 — Camera



- Insert a 1.5mm flat head screw in the slit in between the camera housing and the bottom of the camera.
- Lightly pry upwards and the camera should come loose from the housing.

Step 10



- Carefully grab the sides of the camera with your fingers and remove the camera.
- ⓘ The foam cover on the top of the camera deforms and tears easily, so handle it with care.

To reassemble your device, follow these instructions in reverse order.