



Motorola Defy Display Assembly Replacement

Display assembly replacement.

Written By: Leandro Fuscaldi Albergaria



INTRODUCTION

Use this guide to replace your Defy's display assembly. Replacing the display assembly will give you a new front glass panel and digitizer.



TOOLS:

- [T5 Torx Screwdriver](#) (1)
 - [iFixit Opening Tools](#) (1)
-

Step 1 — Display Assembly



- Remove the battery cover and the battery itself.

Step 2



- Using a Torx T5 screwdriver, remove both screws near the camera.

Step 3



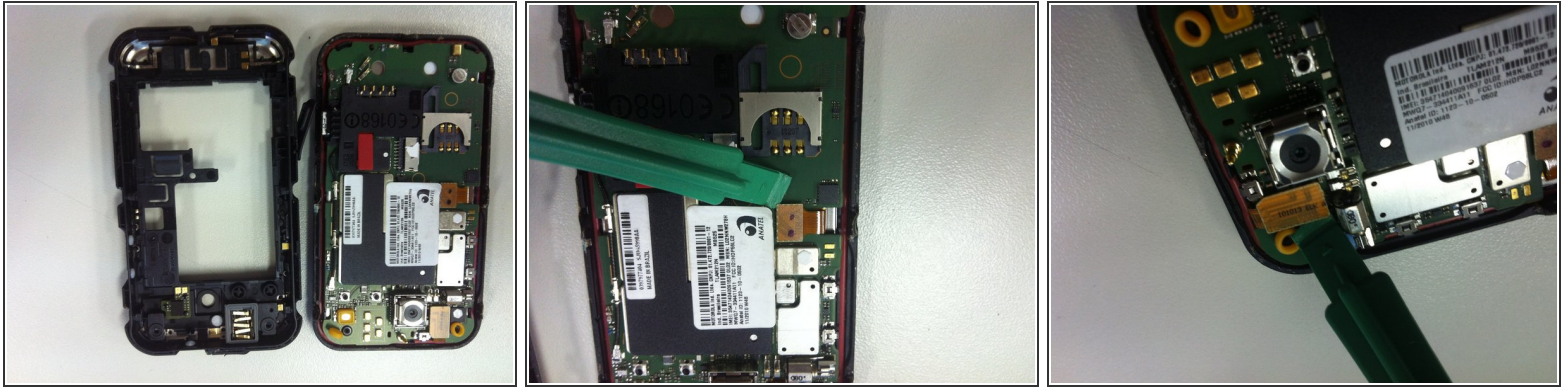
- Using the Torx T5 screwdriver, remove all 7 screws around the mobile: 3 on each side + 1 on the bottom.

Step 4



- Using a plastic opener tool, open the device removing the back cover.
- Remove the power button and volume button.

Step 5



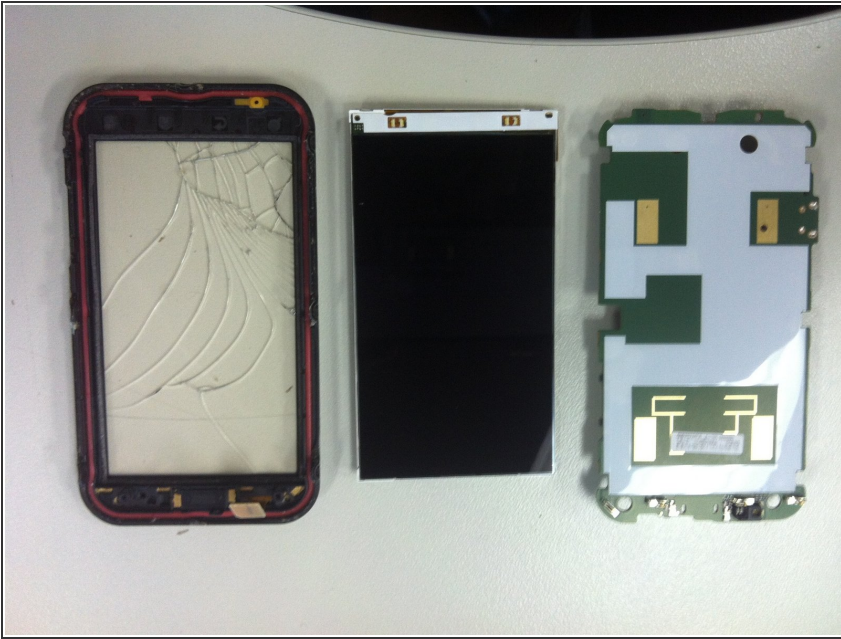
- After opening the device, carefully, using the plastic opening tool, peel off the lcd and digitalizer connectors from the mainboard.

Step 6



- Remove the two yellow rubber protectors near the screws. The rectangular yellow rubber protector might fall off too so put it aside.

Step 7



- Separate the Frame + Digitizer, the LCD and the mainboard.

Step 8



- Now, using a plastic opening tool, carefully insert it between the frame and the glass and force it slowly to remove the adhesive. You may also heat it to help.
- Now, Remove the rest of adhesive from the frame to better apply the new digitizer on it.
- Follow this backwards to reassemble the mobile.

To reassemble your device, follow these instructions in reverse order.