



Motorola Defy Rear Facing Camera Replacement

This guide shows how to replace the camera module in the Motorola MB525 in the event that the camera stops working.

Written By: Morgan Roark



INTRODUCTION

This guide will go through the steps of replacing the camera module for the Motorola MB525 starting from the tear down of the phone to replacement of the camera module itself.



TOOLS:

- [Metal Spudger](#) (1)
 - [iFixit Opening Tools](#) (1)
 - [T5 Torx Screwdriver](#) (1)
 - [64 Bit Driver Kit](#) (1)
 - [Magnetic Project Mat](#) (1)
-

Step 1 — Rear Case



- Using the screwdriver and the T-5 bit, unscrew the seven 5 mm screws around the outside of the phone.

Step 2



- Remove the back cover of the phone by sliding the bottom black button to the unlock position and lifting it up.

Step 3 — Battery



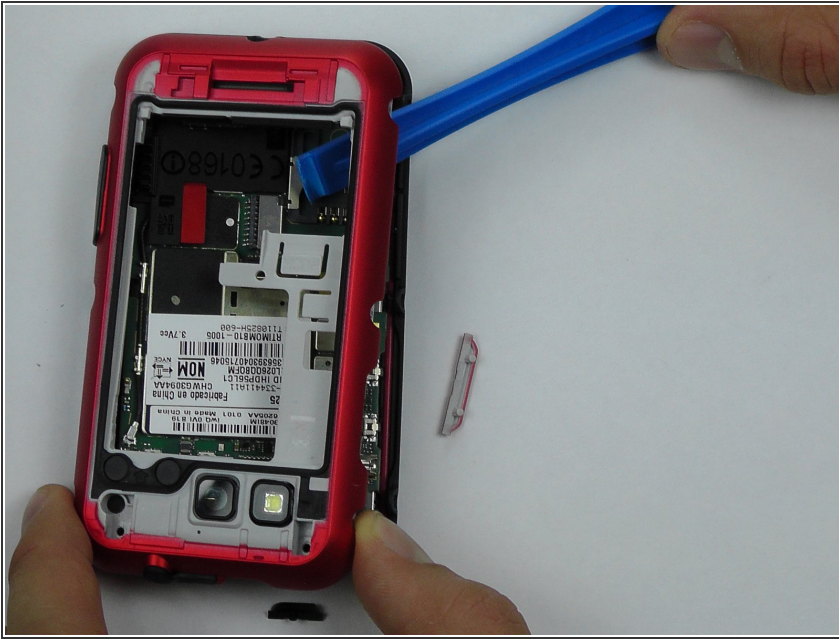
- Use a plastic opening tool to pry the battery out of the phone.

Step 4 — Midframe



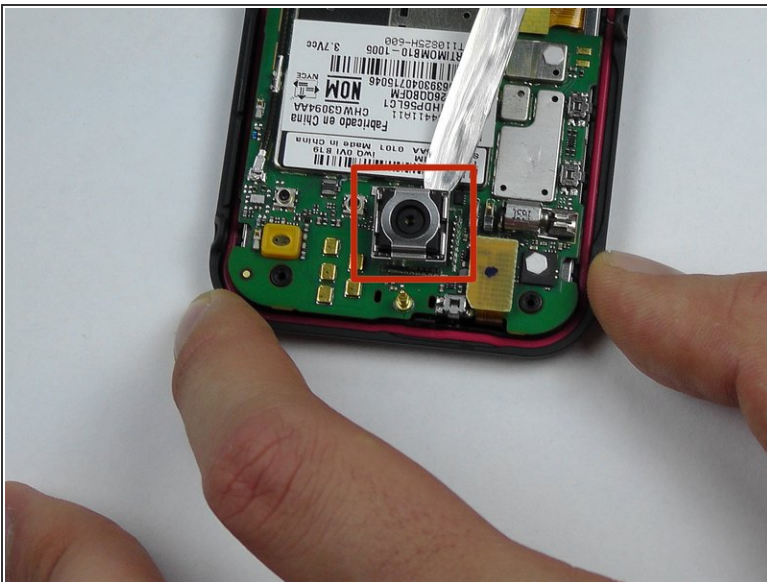
- Unscrew the two silver screws located at the top of the back of the phone.

Step 5



- Use a plastic opening tool to gently pry the midframe from the rest of the phone.

Step 6 — Rear Facing Camera



- Start to pry around the bottom of the camera module with the metal spudger and replace with the new camera module.

 Be careful of the pins that are connected to the camera module on the bottom.

To reassemble your device, follow these instructions in reverse order.