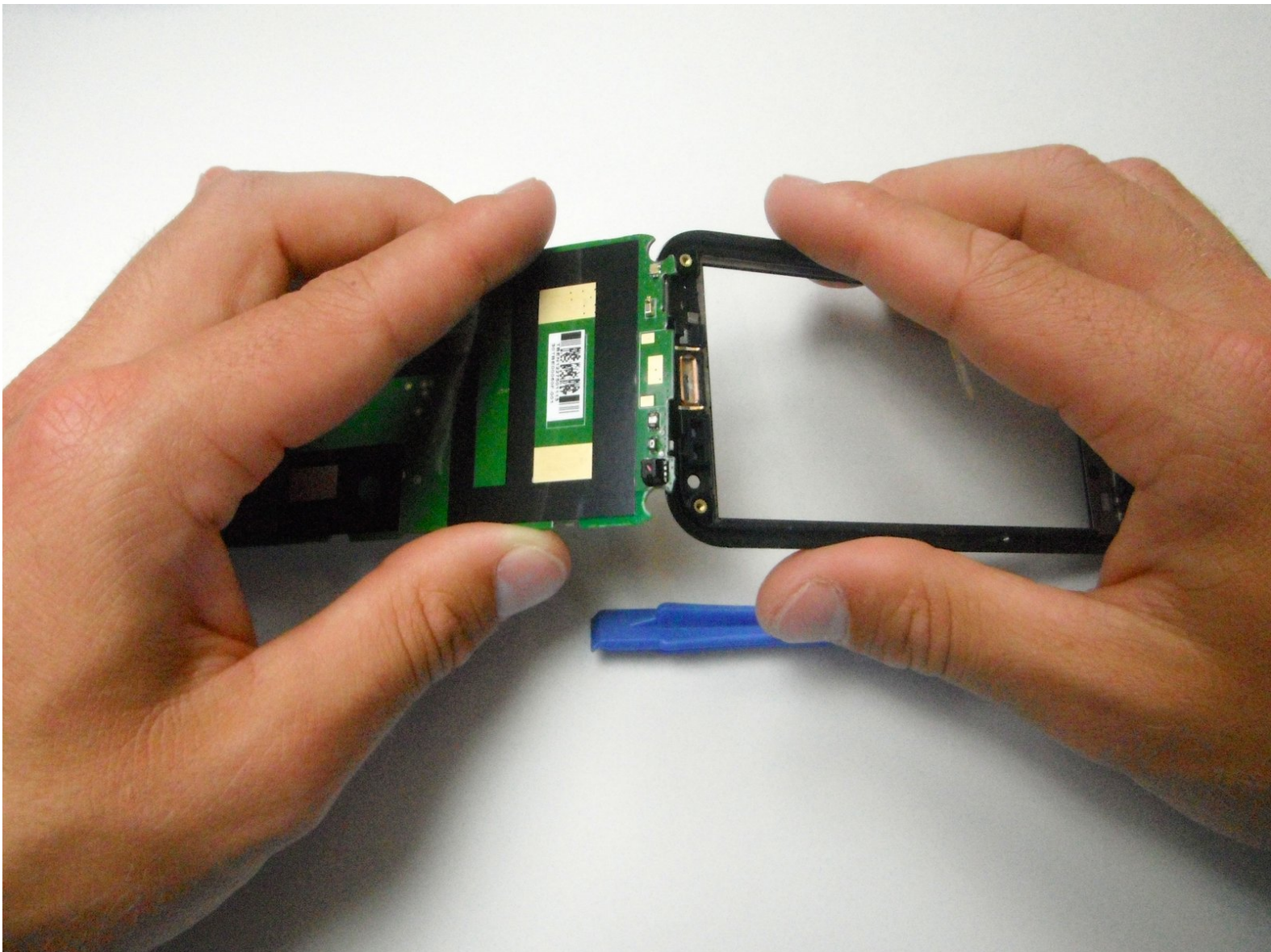




Motorola Defy XT Logic Board Replacement

Disassembly of the phone and removal of the logic board for replacement.

Written By: No Name



INTRODUCTION

This guide will instruct you in proper cellphone disassembly and removal of the faulty logic board for replacement.



TOOLS:

- [T4 Torx Screwdriver](#) (1)
 - [iFixit Opening Tools](#) (1)
-

Step 1 — Logic Board



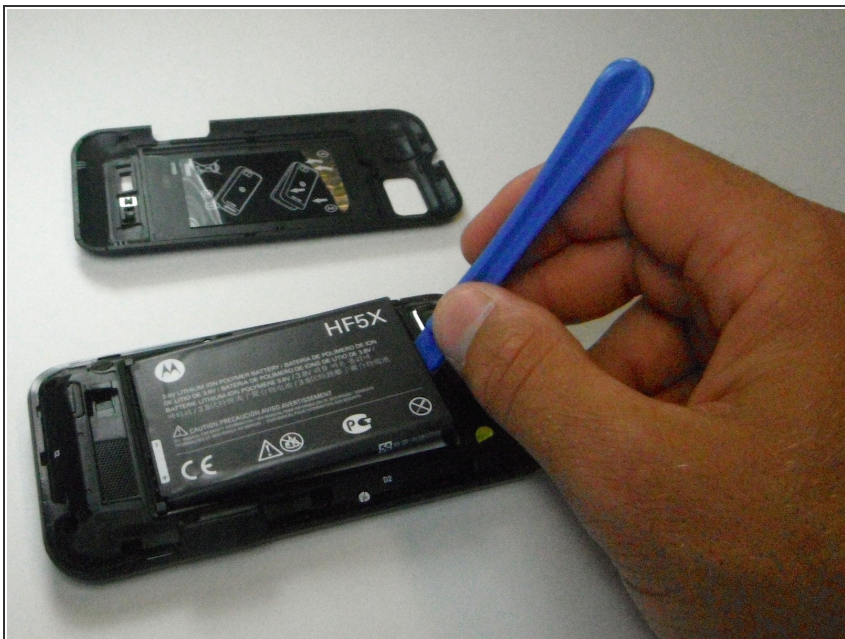
- Wedge the opening tool in-between the back cover and the body of the phone in the opening denoted by the arrow.

Step 2



- Once wedged in the opening, slide the opening tool around the side of the phone and remove the back cover, setting it aside.

Step 3



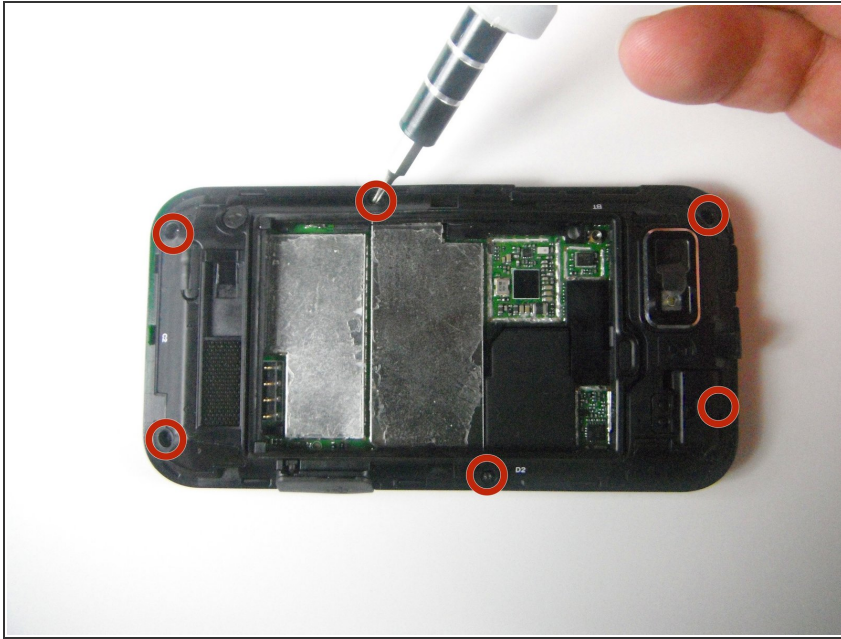
- Insert the opening tool between the battery and the battery holder and wedge the battery out.

Step 4



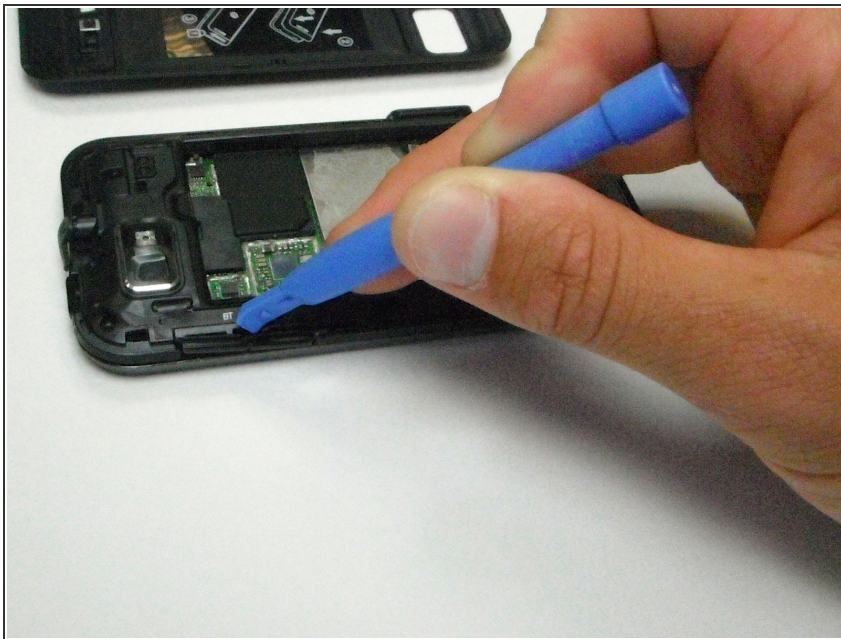
- Open the plastic cover with your finger to expose the SD card.
- Use the opening tool to grab the edge of the SD card and pull it straight out.

Step 5



- Remove the six 6mm T4 screws with the T4 torque driver.

Step 6



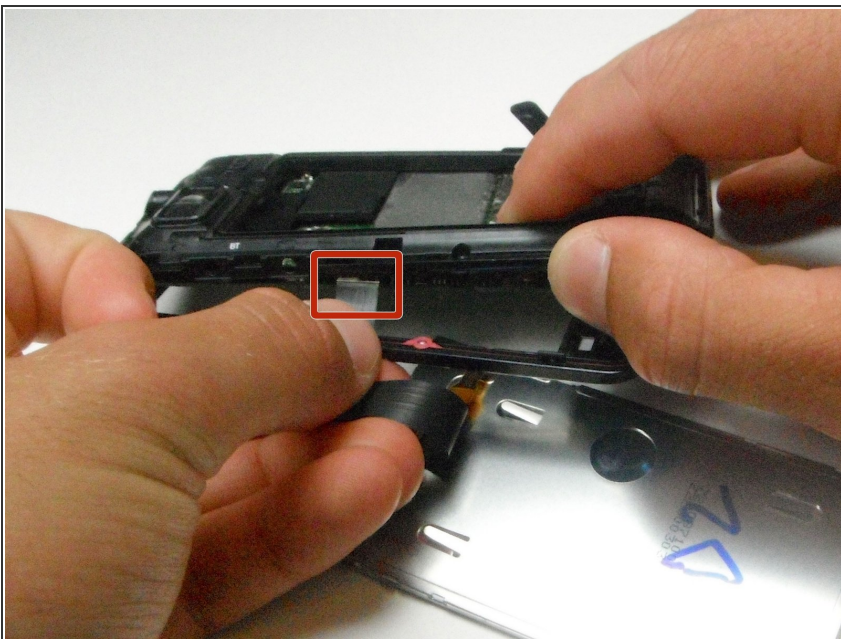
- Pop out the volume button with the plastic opening tool.

Step 7



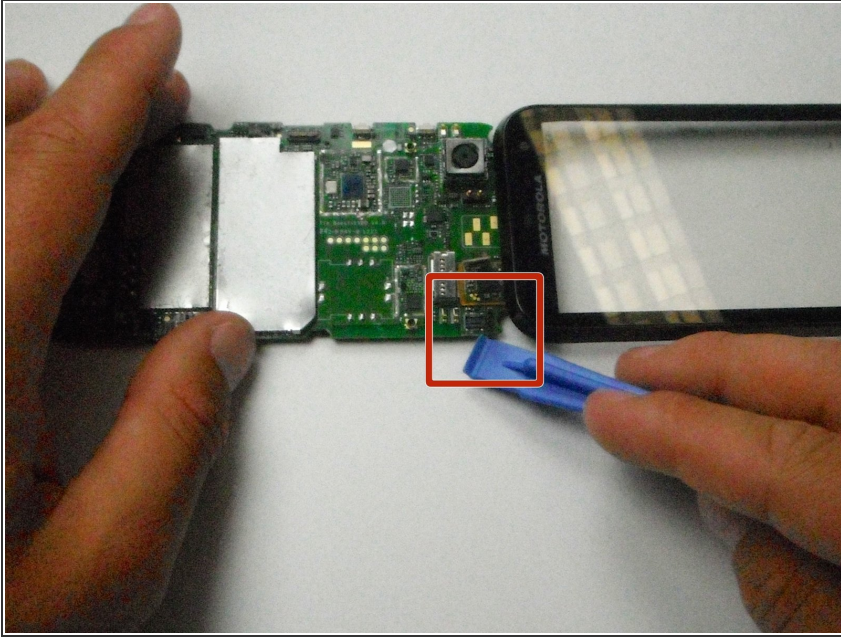
- Wedge the plastic opening tool in-between the plastic layer and the front cover.
- ⚠ Do not completely separate the two pieces to avoid damaging the ribbon cable inside.

Step 8



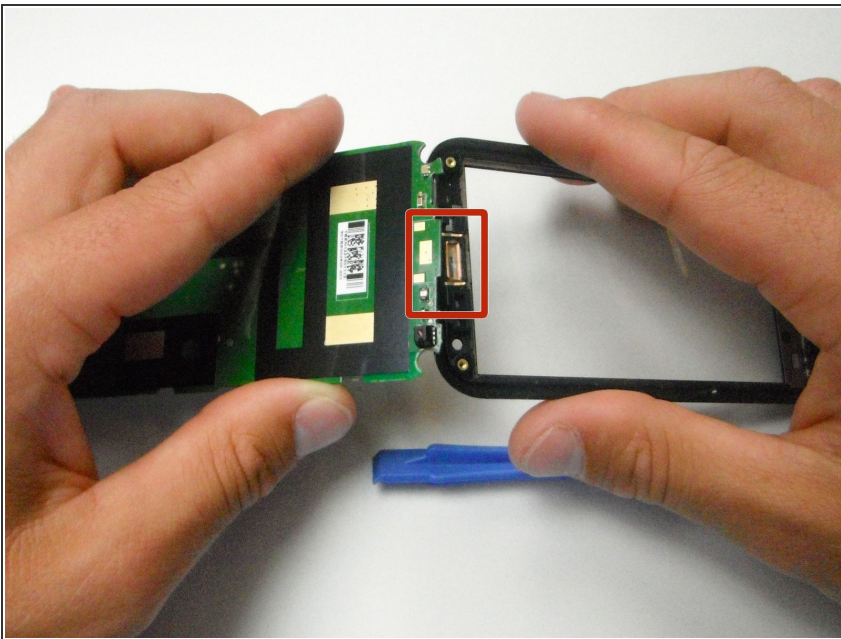
- Carefully separate the bottom piece from the top plastic piece.
- Disconnect the ribbon cable connecting the display to the logic board by firmly pulling the cable straight outward.
- The screen can now be removed.

Step 9



- Separate the logic board and the display cover from the back cover and orient the logic board so the camera faces toward you.
- Disconnect the back cover by wedging the plastic opening tool in between the motherboard and the connector and prying outward.

Step 10



- Flip the logic board and display cover over so the camera faces away from you.
- Bend the two halves of the device away from you to pry the final ribbon connector off the logic board.
- ⓘ The ribbon connector is bonded to the logic board with adhesive, simply pull it to break the glue bond.

To reassemble your device, follow these instructions in reverse order.