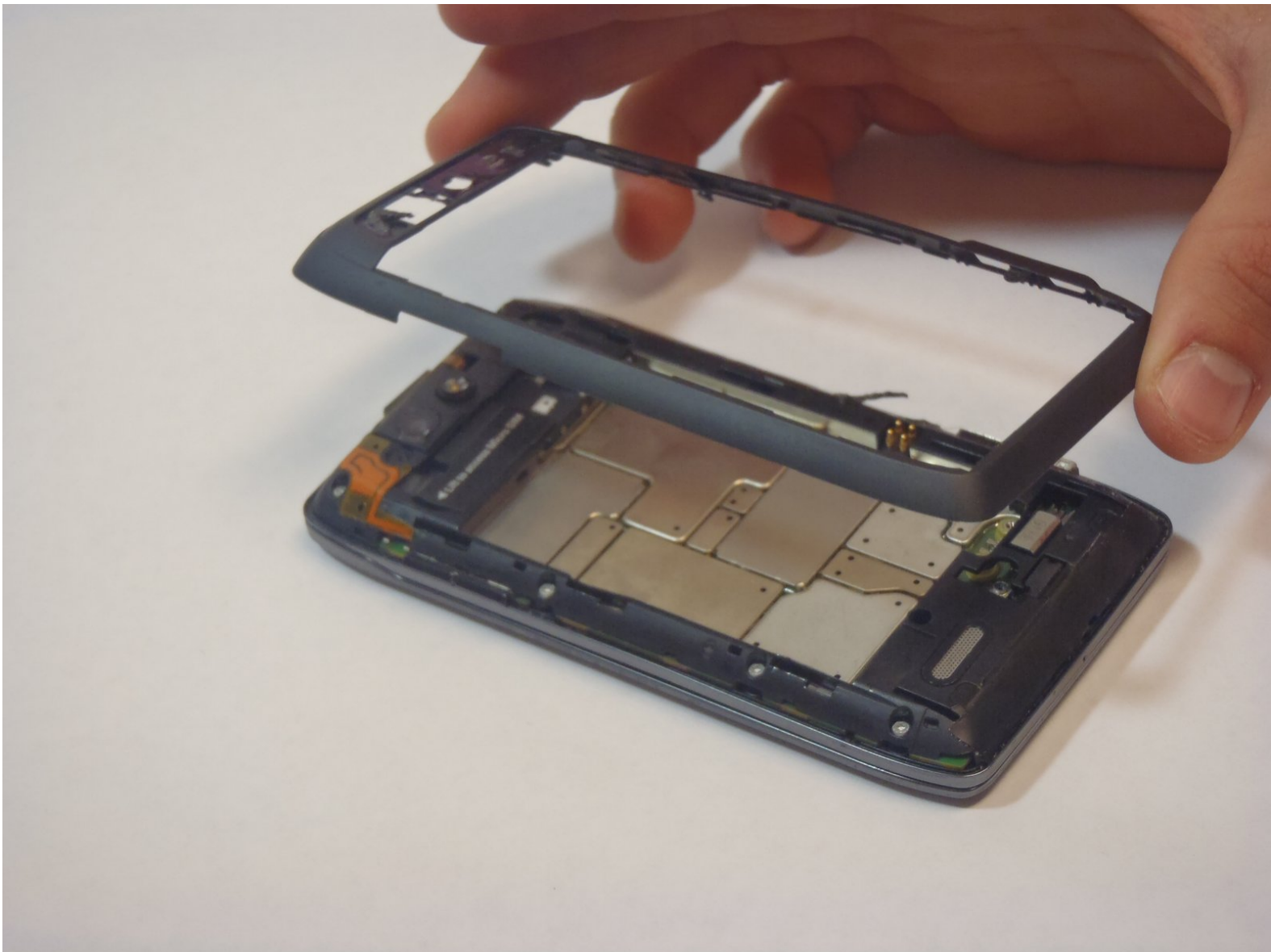




Motorola Droid 4 Rear Bezel Replacement

Step by step instructions for Rear Bezel removal.

Written By: Cheriann



INTRODUCTION

The rear bezel holds most of the phone together. The rear bezel needs to be removed to allow you to have access to the internal parts of the phone besides the battery.

You will need to remove several torx head screws. Make sure to use the correct type.

TOOLS:

- [Spudger](#) (1)
 - [iFixit Opening Tools](#) (1)
 - [T5 Torx Screwdriver](#) (1)
 - [Motorola Rear Cover Removal Tool](#) (1)
-

Step 1 — Removing Rear Panel



To unlock the rear cover, insert the rear cover removal tool (packaged with your smartphone) in the hole near the back camera lens, then slide the cover down to remove.



If you have any problems unlocking or removing the rear cover, please take your smartphone to any Verizon Wireless store for assistance.

- Insert the rear cover removal tool, or a paper clip, in the hole near the back camera lens.
- Slide the cover down to remove.

Step 2 — Battery




- Remove the sticker on the rear compartment to reveal the battery.
- ⚠ Hold the battery with your thumb while removing the sticker or you might end up ripping the battery out of the phone, damaging the flex cable.

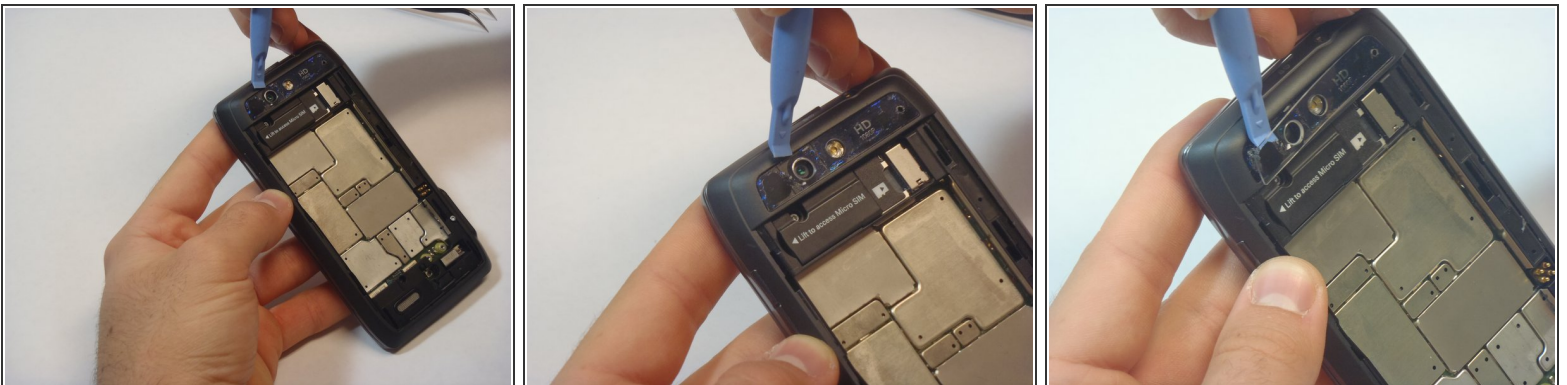
Step 3




- Use the [T5 Torx Screwdriver](#) to remove both 2.5 mm screws from the battery cable.
- Use the [Spudger](#) to unstick the battery.

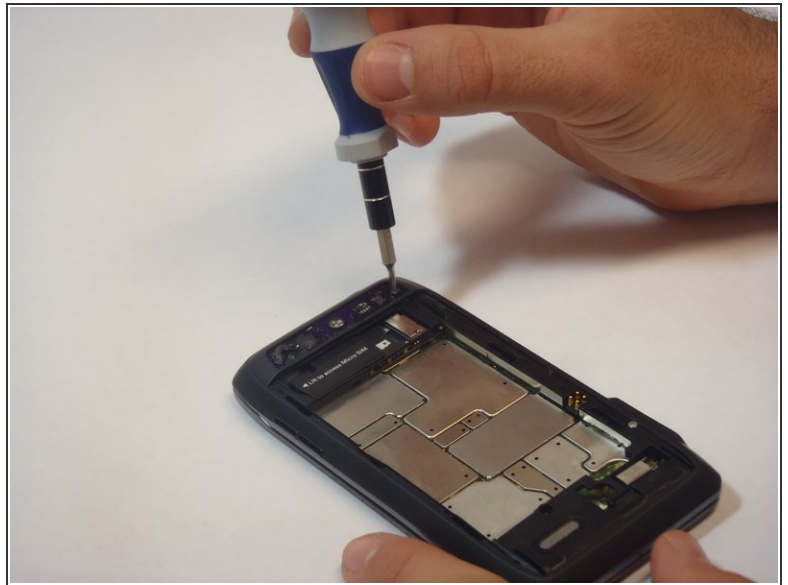
 It's difficult to remove the battery without a pry tool like the spudger because of the strong adhesive. If you try removing it with just your fingers, the battery may bend.

Step 4 — Camera Cover Removal



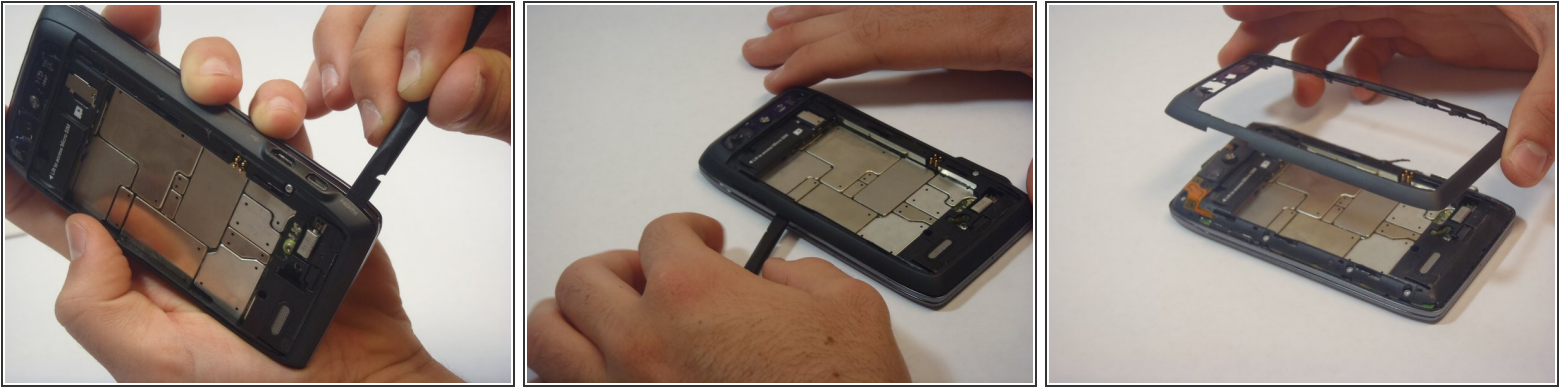
- Using the blue plastic opening tool, pry off the thin plastic camera cover.
-  The plastic cover is fragile, so proceed carefully.

Step 5 — Remove Screws



- Remove the four screws, indicated by the red circles, with the screwdriver and T5 Torx bit.
- ⓘ The screws are philips 2.5mm. One screw is a different color (silver) from the others (black).

Step 6 — Remove Bezel



- Insert the spudger between the rear bezel and the main housing.
- ⓘ The bezel is fragile, so proceed carefully.
- Slide the spudger around all sides of the phone to separate the bezel from the housing.
- Pry the bezel free.
- ⚠ Be careful of the adhesive that holds the bezel to the main housing. Prying too hard may damage your phone.

To reassemble your device, follow these instructions in reverse order.