



Motorola Droid Bionic LCD Replacement

Repair process of installing a new LCD for the Motorola Droid Bionic.

Written By: Taylor





TOOLS:

- [iFixit Opening Tools](#) (1)
- [T4 Torx Screwdriver](#) (1)



PARTS:

- [Motorola Droid Bionic LCD](#) (1)

Step 1 — LCD



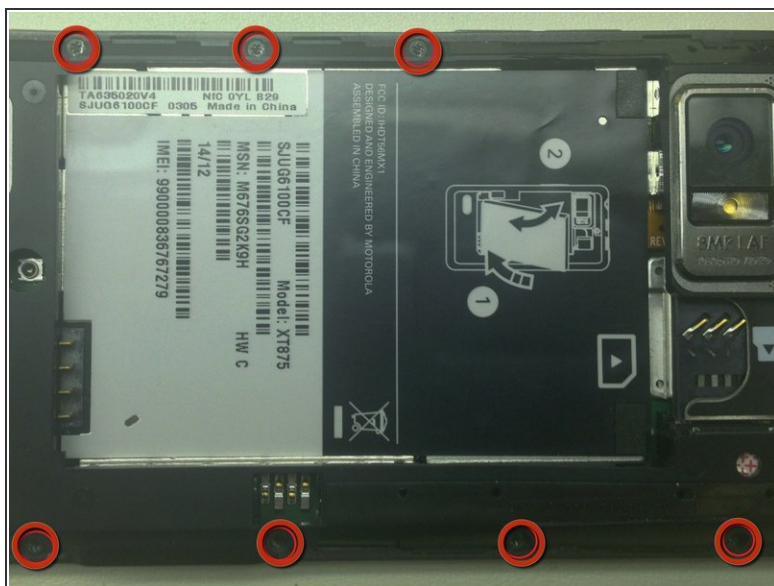
- Remove the back battery cover.

Step 2



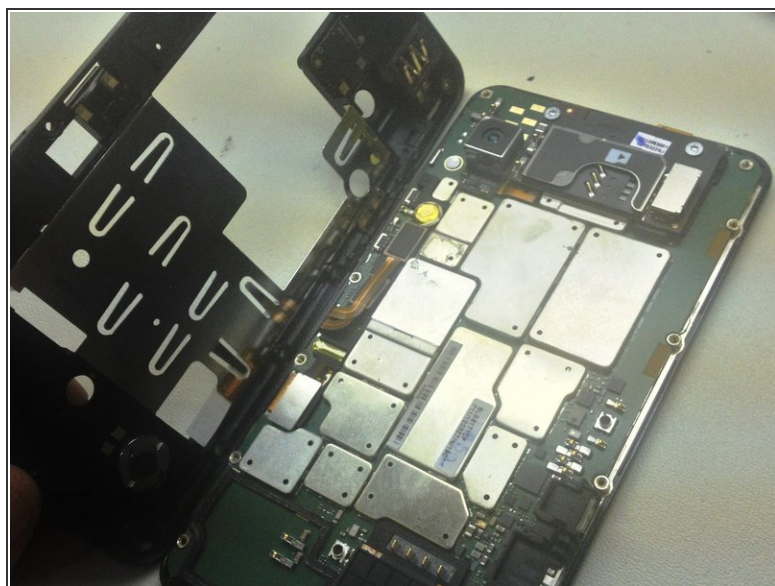
- Remove the battery

Step 3



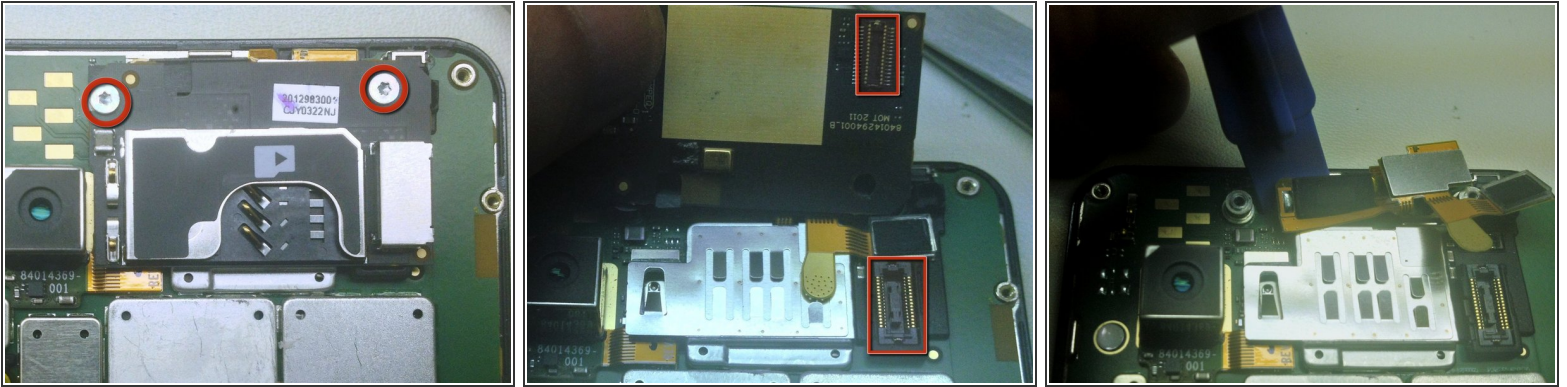
- Remove the 11 T4 Torx Screws
- Next, remove the information sticker.

Step 4



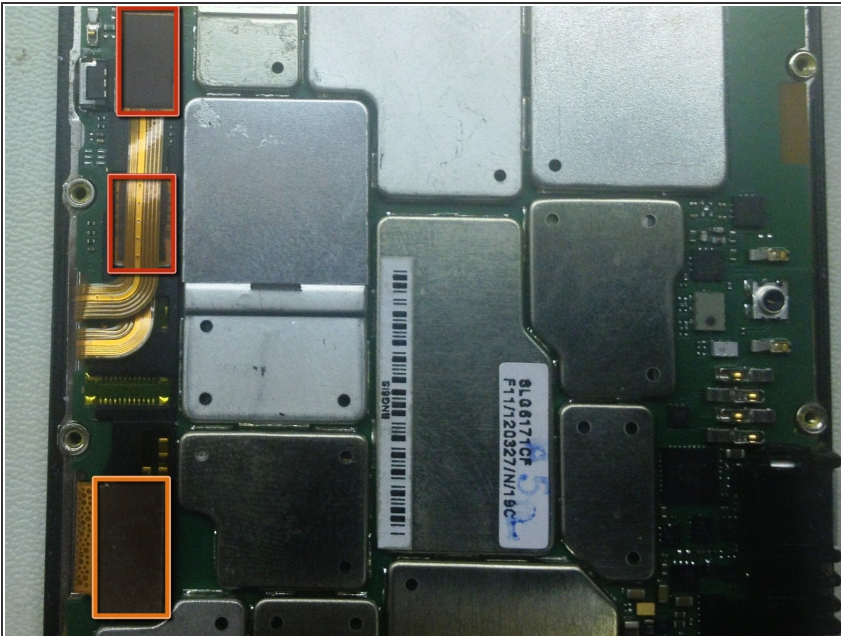
- Using a plastic removal tool, work around the edges of the back housing.
- Lift off the back housing.

Step 5



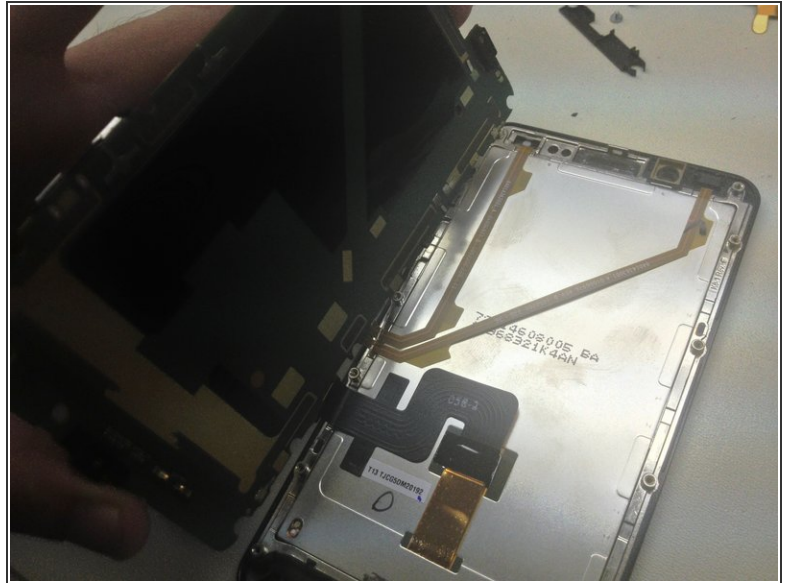
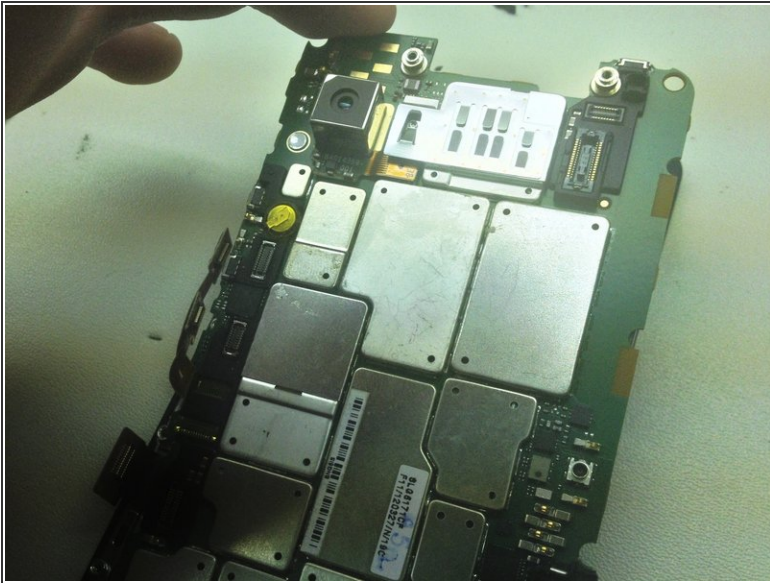
- Remove the two silver T4 screws securing the SIM tray.
- Carefully lift the SIM tray to disconnect it from the board.
- Carefully remove the plastic spacer beneath by lifting gently in the center with a plastic removal tool.
- Then, using a plastic removal tool, disconnect the speaker & front facing camera assembly from the board. The speaker is attached with adhesive, so be careful not to rip the flex cable.

Step 6



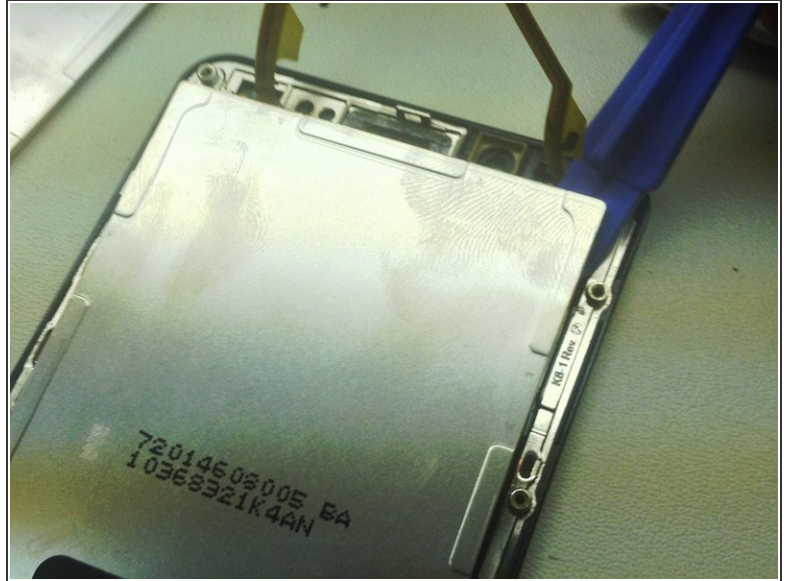
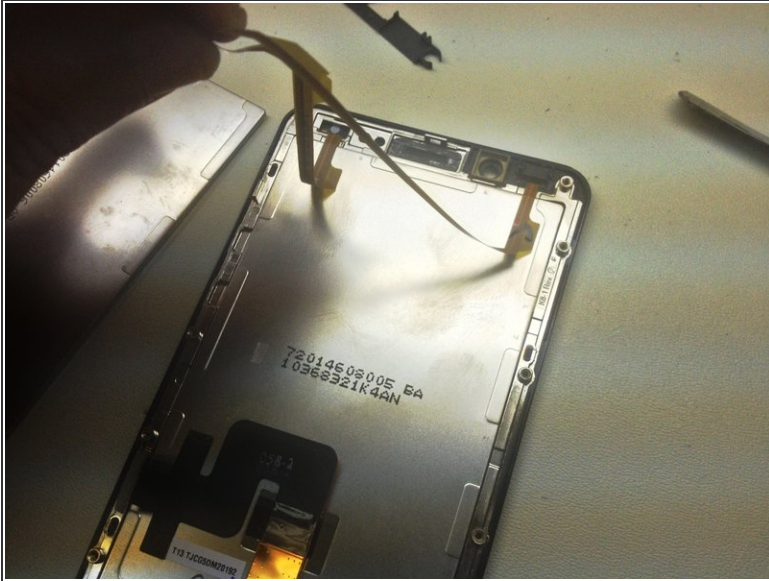
- Disconnect the 2 digitizer connectors using a plastic removal tool.
- Then disconnect the LCD connector


Step 7



- The board is now free from all connections. Carefully lift from the top and remove the board.

Step 8



-  Carefully peel the two flex cables from the back housing of the LCD. Be exceptionally careful during this process, as those flex cables can be easily ripped.
- With the flex cables out of the way, you can now use a plastic opening tool to carefully pry the old LCD loose and out of the display.
 - If you're installing a new LCD, simply add it now and follow these instructions in reverse to complete the installation.

To reassemble your device, follow these instructions in reverse order.