



Motorola Droid MAXX 2 Button Assembly Replacement

A guide on how to replace the volume and power buttons on a Motorola Droid MAXX 2 smartphone.

Written By: Burke Seggerman



INTRODUCTION

A guide on how to replace the volume and power buttons on a Motorola Droid MAXX 2 smartphone.



TOOLS:

- [T4 Torx Screwdriver](#) (1)
 - [Spudger](#) (1)
-

Step 1 — Battery



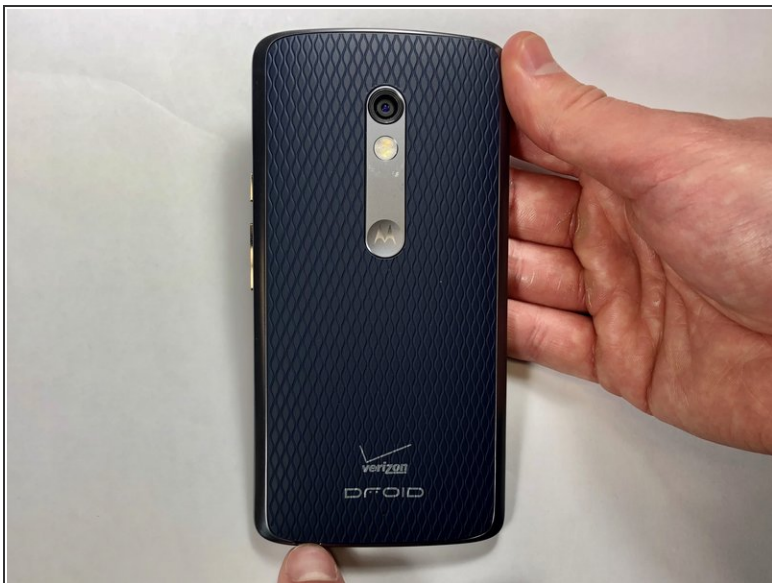
- Insert a small pointed object into the hole on the sim card tray to eject the tray from the phone.

Step 2



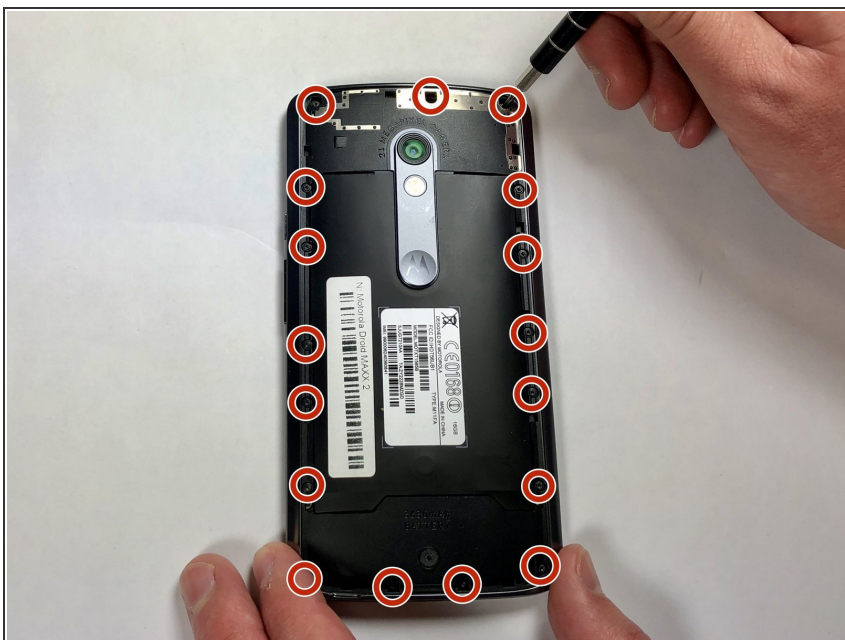
- Pull the sim card tray up out of the phone

Step 3



- Wedge your thumb into the indent located on the bottom left corner of the back cover and pull up to remove the back cover.

Step 4



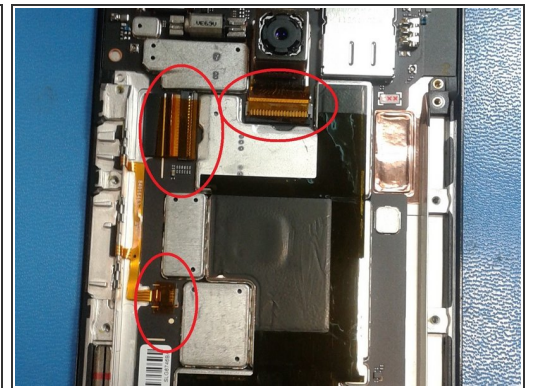
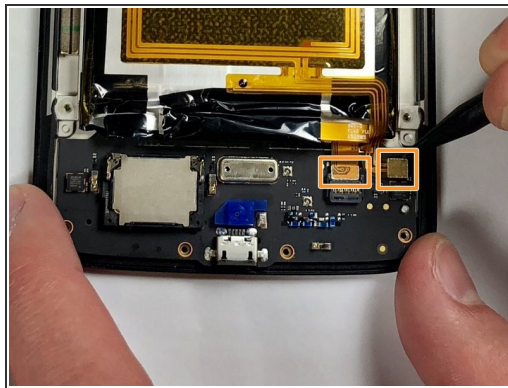
- Remove the seventeen 3.2mm Torx T4 screws from the mid-frame.
- ⓘ These may be T3 screws. If you are having trouble unscrewing these, stop and try a T3 bit.

Step 5



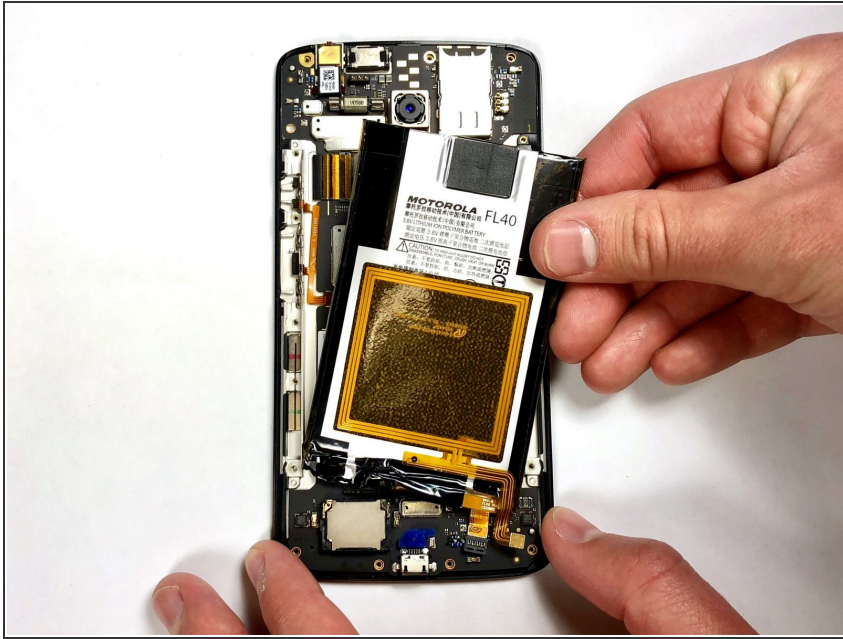
- Pull the mid-frame off of the phone.
- ⓘ Keep track of the on/off and volume buttons when you take the phone apart because they are likely to fall out when the halves are separated.

Step 6



- Remove the static tape covering the two connectors.
- Use a spudger to disconnect the battery cables from the motherboard.
- If battery has adhesive, use heat gun for one to two minutes to loosen it. Be careful of the points outlined in red when prying it up. Use guitar picks or a spudger to gently lift the battery and separate the adhesive.

Step 7



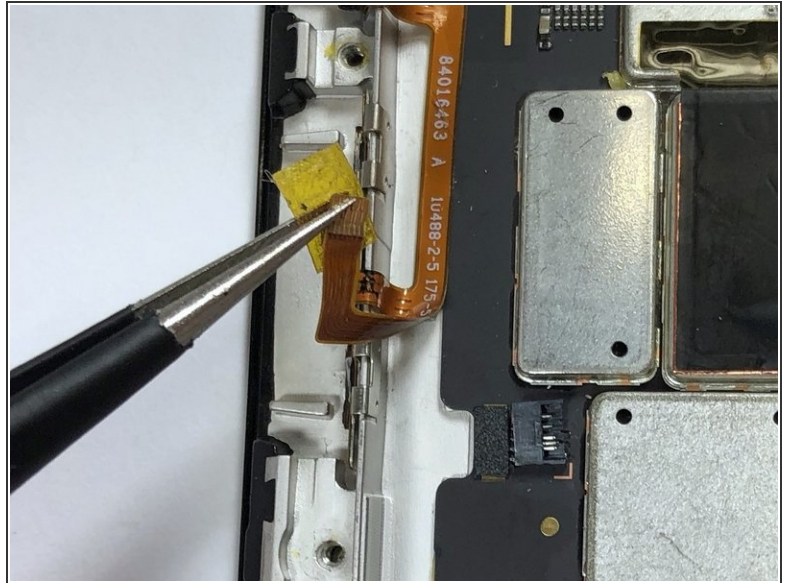
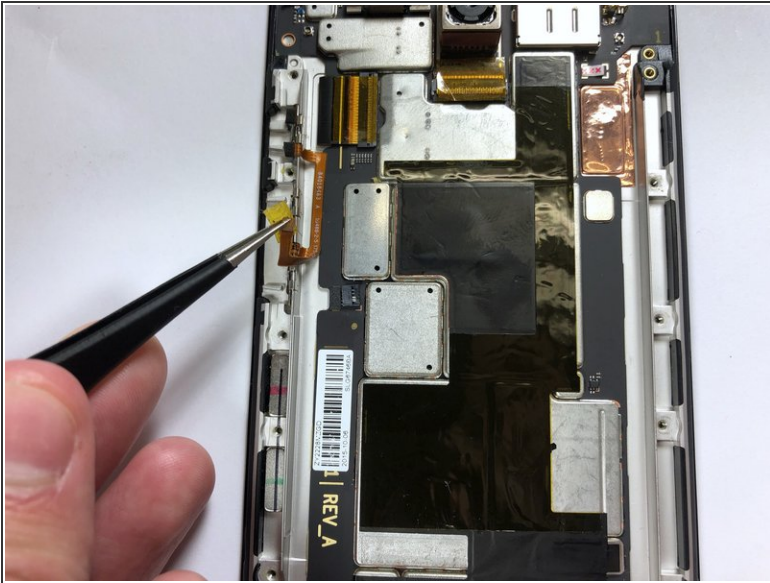
- Remove the disconnected battery from the phone.

Step 8 — Button Assembly



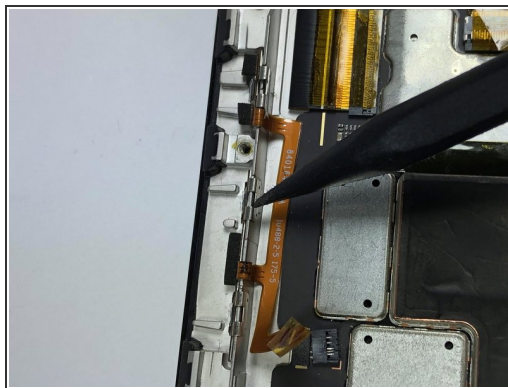
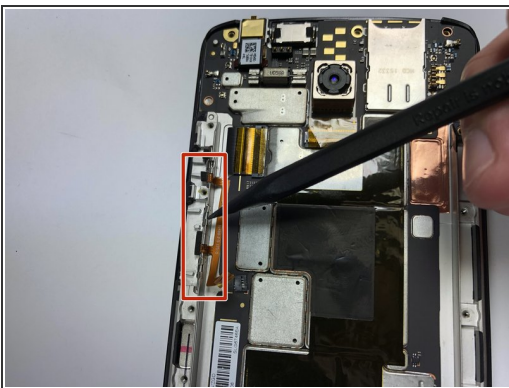
- Peel back the orange adhesive covering the ZIF connector.

Step 9



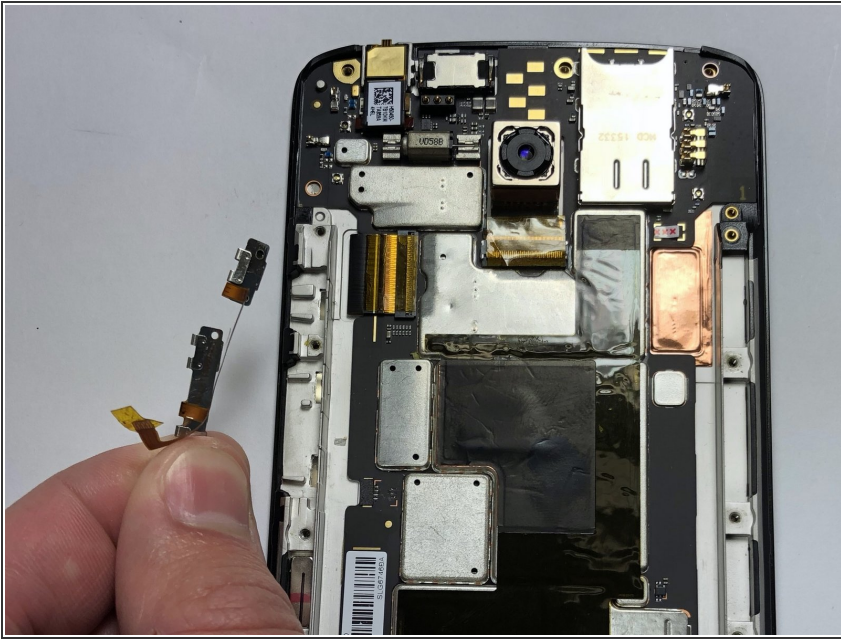
- Lift the black tab on the ZIF connector up.
- Pull the ribbon cable out of the ZIF connector.

Step 10



- Use the plastic spudger to loosen the metal prongs that hold the button assembly onto the phone.

Step 11



- Pull the button assembly up and out of the phone.

To reassemble your device, follow these instructions in reverse order.