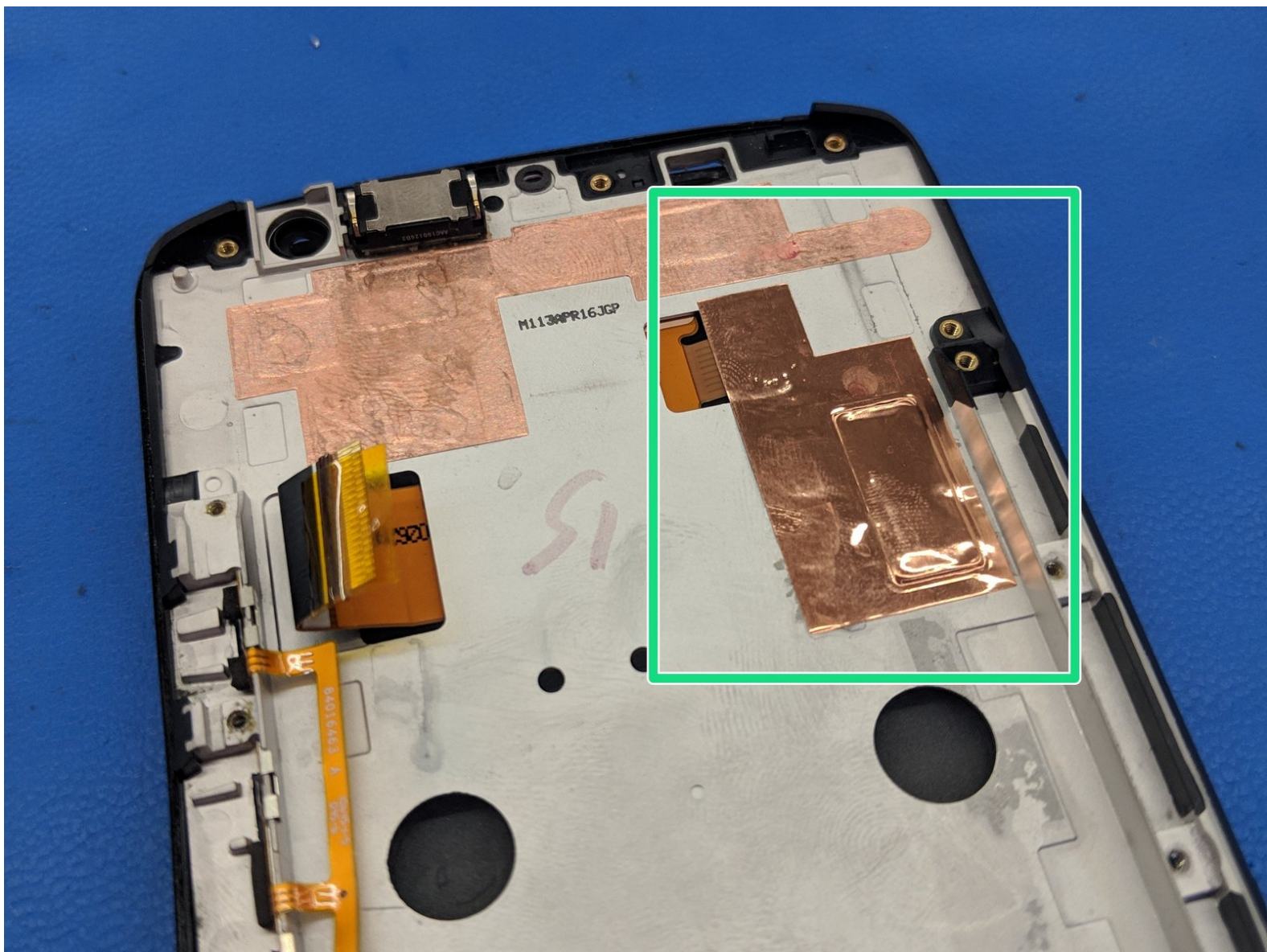




# Motorola Droid MAXX 2 Screen Only Replacement

Written By: Patrick





## TOOLS:

- [T3 Torx Screwdriver](#) (1)
  - [Spudger](#) (1)
  - [Tweezers](#) (1)
  - [Jimmy](#) (1)
-

## Step 1 — Battery



- Insert a small pointed object into the hole on the sim card tray to eject the tray from the phone.

## Step 2



- Pull the sim card tray up out of the phone



### Step 3



- Wedge your thumb into the indent located on the bottom left corner of the back cover and pull up to remove the back cover.

### Step 4



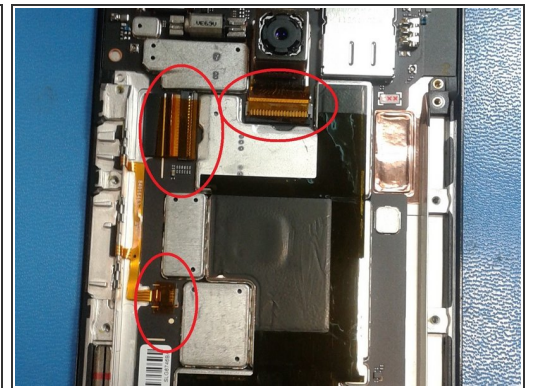
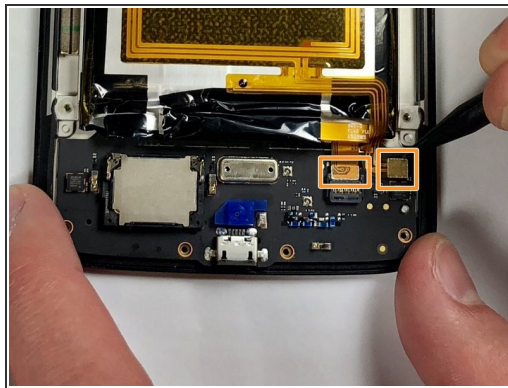
- Remove the seventeen 3.2mm Torx T4 screws from the mid-frame.
- ⓘ These may be T3 screws. If you are having trouble unscrewing these, stop and try a T3 bit.

## Step 5



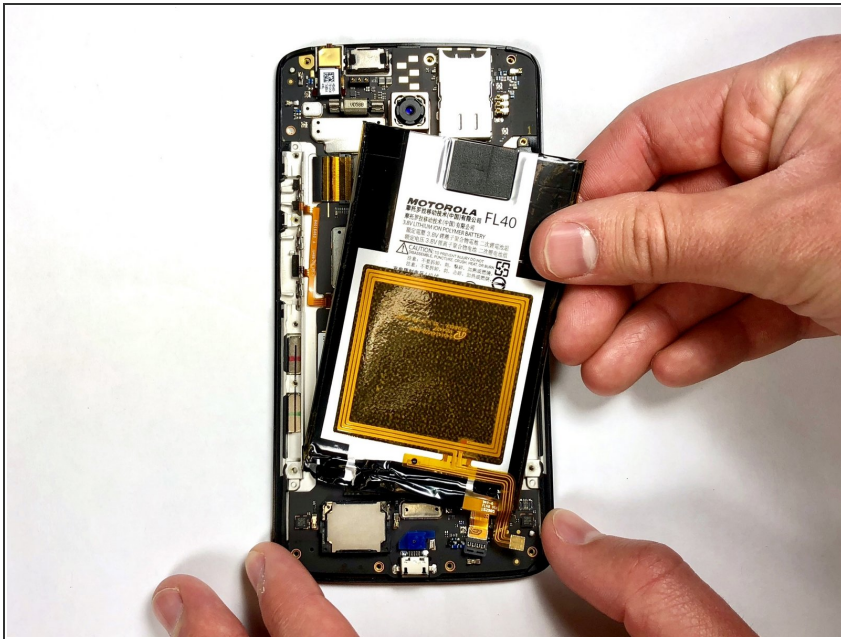
- Pull the mid-frame off of the phone.
- ⓘ Keep track of the on/off and volume buttons when you take the phone apart because they are likely to fall out when the halves are separated.

## Step 6



- Remove the static tape covering the two connectors.
- Use a spudger to disconnect the battery cables from the motherboard.
- If battery has adhesive, use heat gun for one to two minutes to loosen it. Be careful of the points outlined in red when prying it up. Use guitar picks or a spudger to gently lift the battery and separate the adhesive.

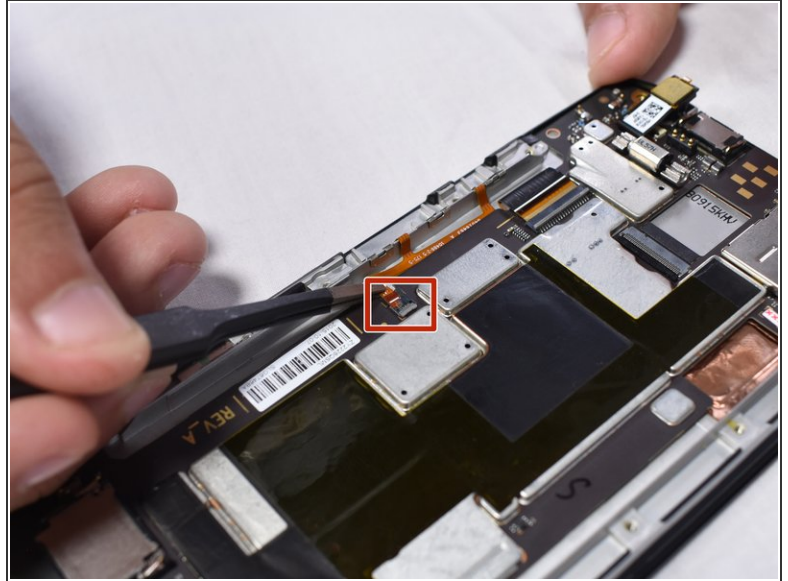
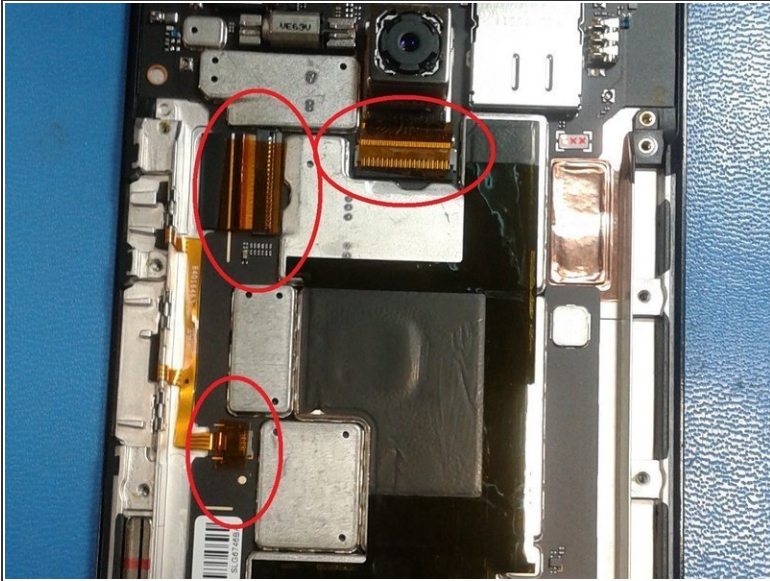
## Step 7



- Remove the disconnected battery from the phone.

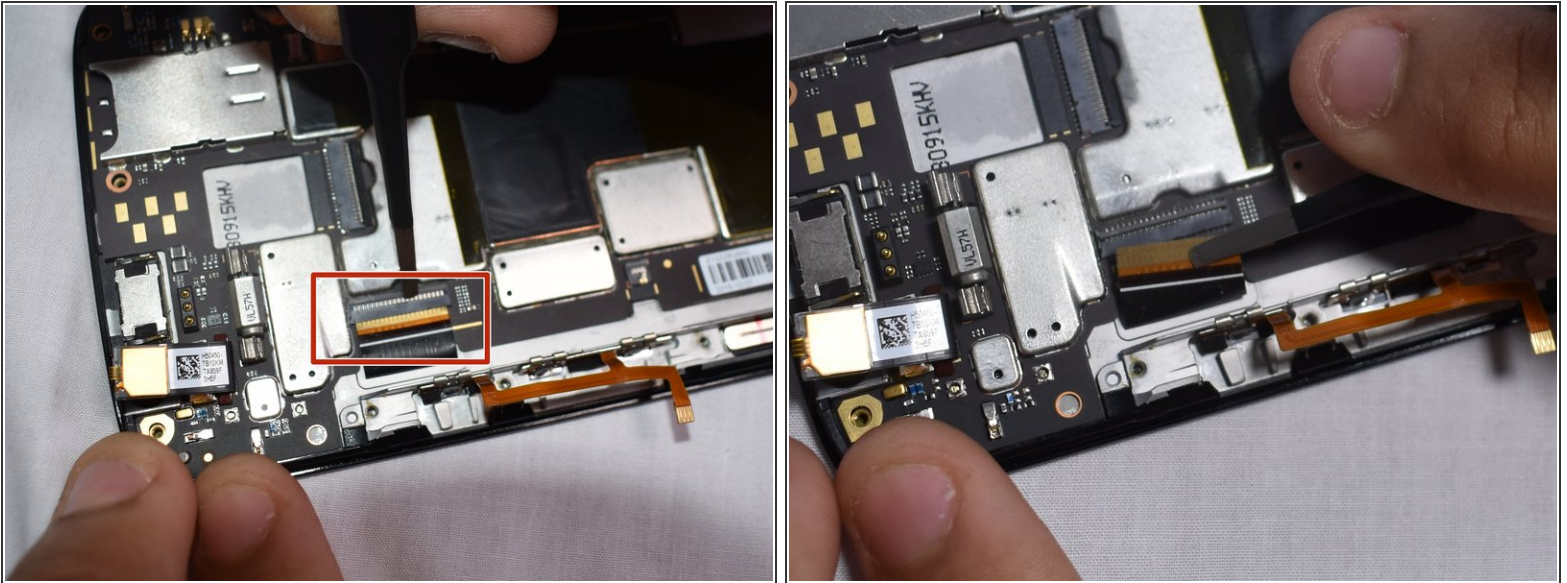


## Step 8 — Screen Assembly



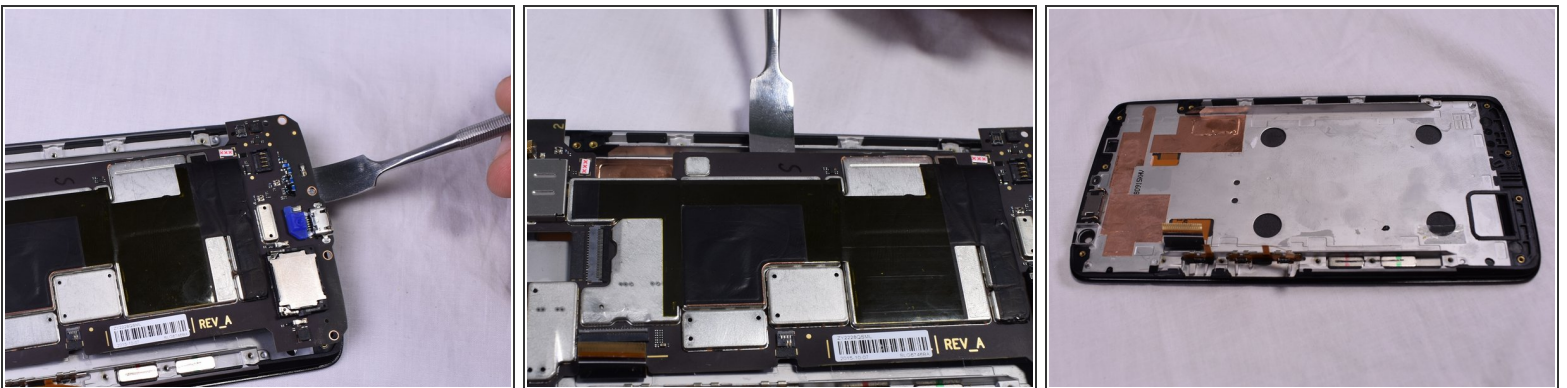
- We will be removing these 3 ribbon cables.
- Using an opening pick, lift the grey tab on the rear camera's ZIF connector. Remove the ribbon cable and the camera.
- Use tweezers to lift up on the grey latch on the ZIF connector.
- Remove the ribbon cable from the ZIF connector.

## Step 9



- Use a pair of tweezers to lift up the black latch on the ZIF connector.
- Pull the ribbon cable out of the ZIF connector.

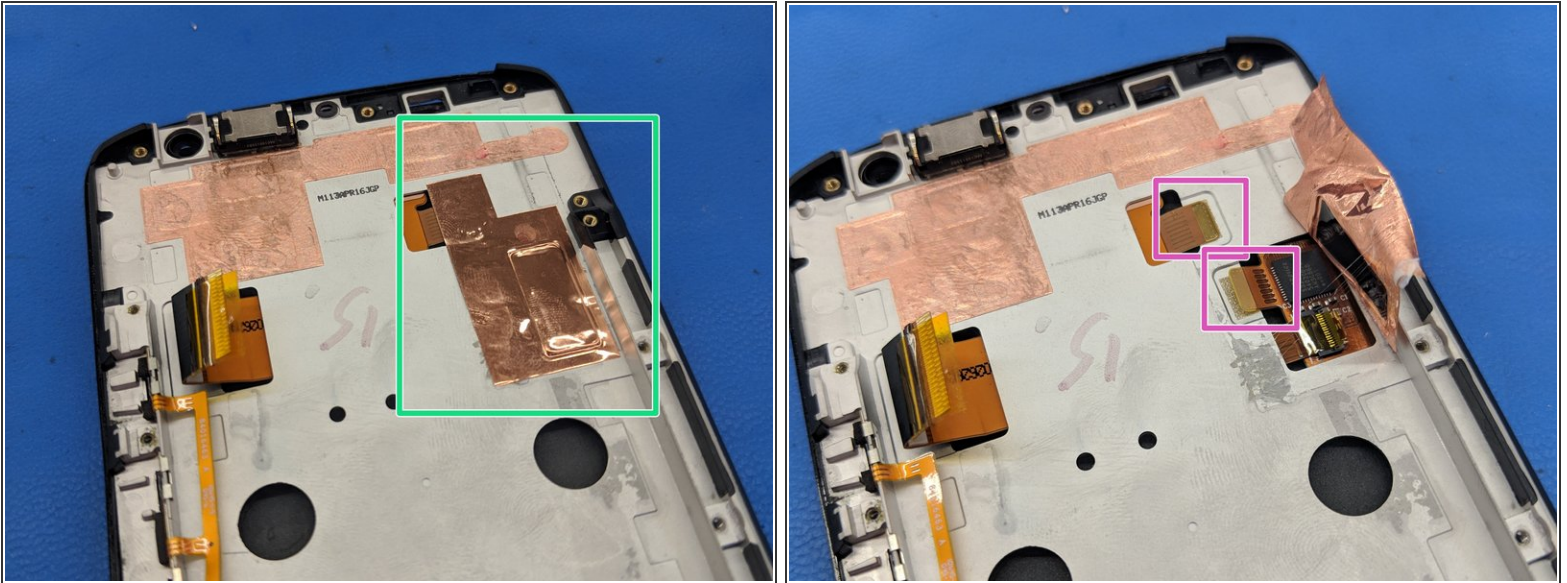
## Step 10



- Using a metal spudger, work your way around the perimeter of the main board and screen.
- ❗ There is a lot of adhesive between the two pieces, so be careful to try to remove the adhesive slowly in order to not break anything.

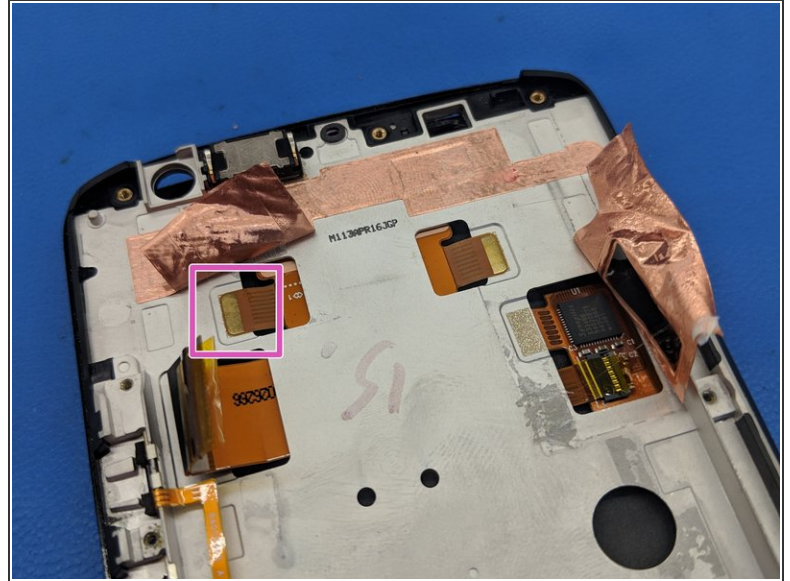
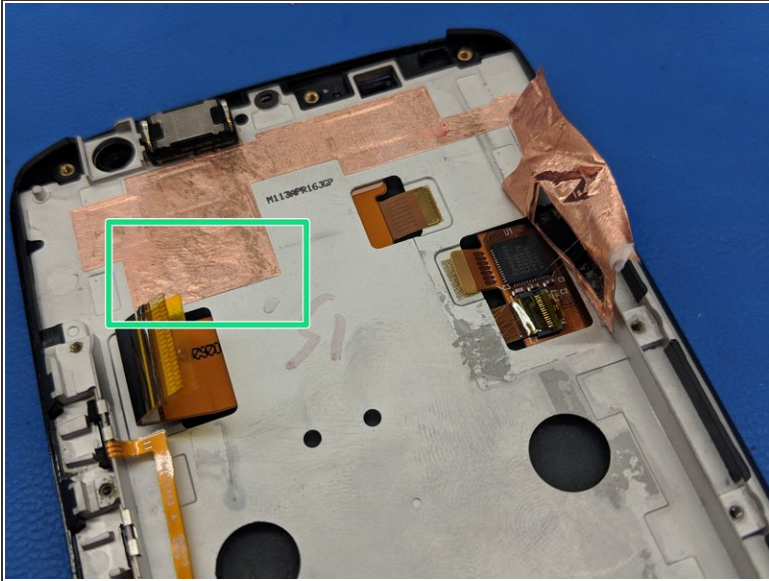


## Step 11 — Screen Only



- Use an opening pick or metal jimmy to carefully peel up a corner of this section of copper tape.
- Slowly peel the entire piece of copper tape off of the frame, trying not to tear or kink it. Set aside and re-install after attaching new display.
- Using the pointy tip of a spudger, detach these display cable tabs from the frame.

## Step 12



- Carefully peel up the bottom part of this piece of copper tape and fold it over.
- Using the point of a spudger, detach this display cable tab from the frame.

## Step 13



- ⚠ The plastic edge around the digitizer is very fragile. Use caution when separating the adhesive.
- Heat the top bezel to soften the adhesive and carefully start removing the display from the frame using a plastic opening picks and a metal jimmy as necessary.
- ⓘ The display cable is lightly adhered to the frame. Remove the display starting from the top.

To reassemble your device, follow these instructions in reverse order.