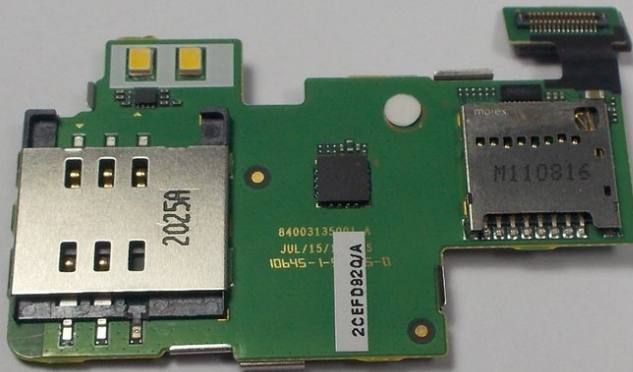




Motorola Droid Pro SD Card/SIM Card PCB Board Replacement

This guide will show you how to disassemble your device and get to the PCB board so you can replace it.

Written By: Kyle Shays



INTRODUCTION

Before continuing make sure you power down your device and work in a clean area. Also wear a static band to prevent damages to your device.



TOOLS:

- [T4 Torx Screwdriver](#) (1)
 - [Anti-Static Wrist Strap](#) (1)
 - [iFixit Opening Tools](#) (1)
-

Step 1 — Battery



- Remove the back cover using the thumb tab located on the bottom of the phone.

Step 2



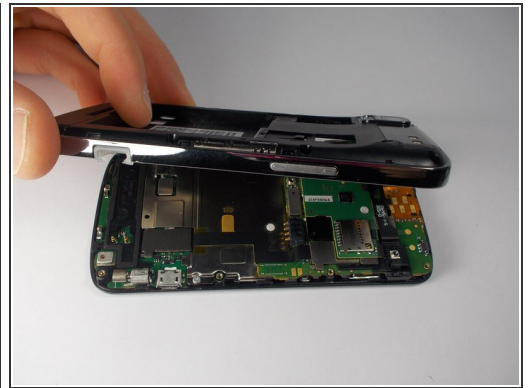
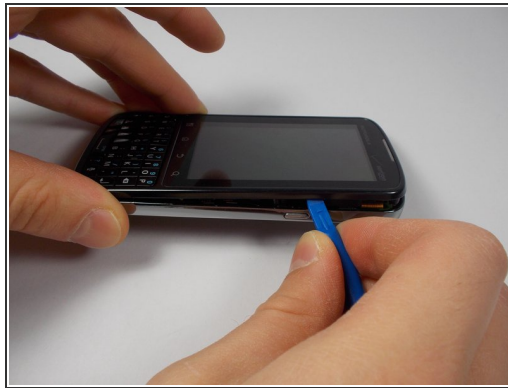
- Remove the battery using the thumb tab.

Step 3 — SD Card/SIM Card PCB Board



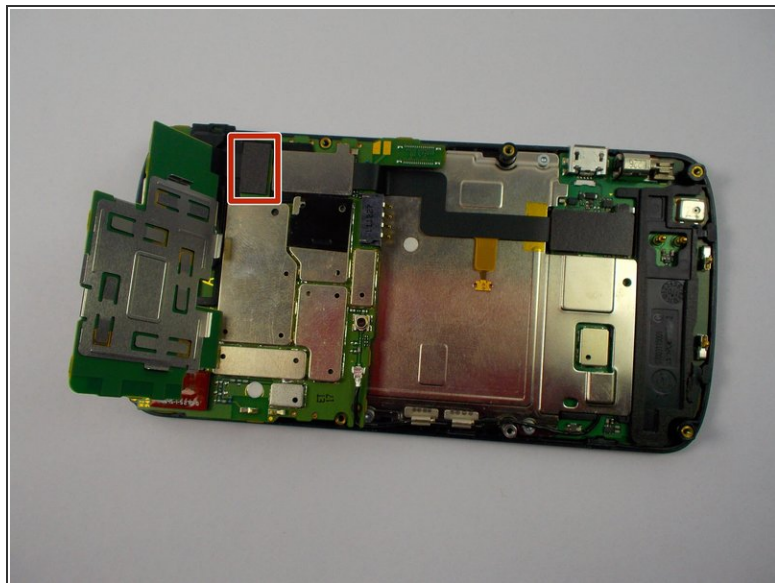
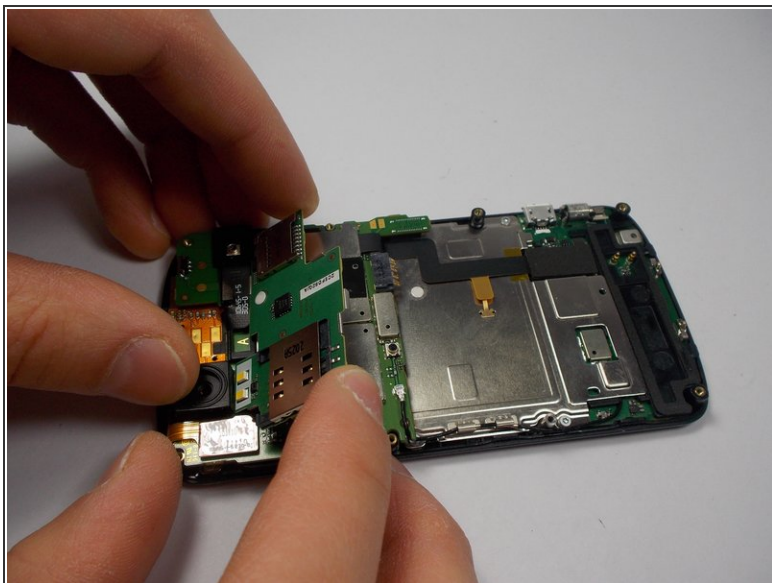
- Using a T4 Torx driver, remove the eight 4 mm back panel screws.

Step 4




- Use a plastic opening tool to open the phone along the sides between the front panel and the chrome trim.
- ⓘ It is held together by small clips that lock in. You may have to use extra force to unlock them.
- Go around on all sides of the phone, unlocking the clips. Then pull the back panel off.

Step 5



- Gently lift the SD & SIM card board (PCB) as shown.

 There is a ribbon cable attached underneath. Gently pull the PCB board away from the phone and it will detach easily.

To reassemble your device, follow these instructions in reverse order.