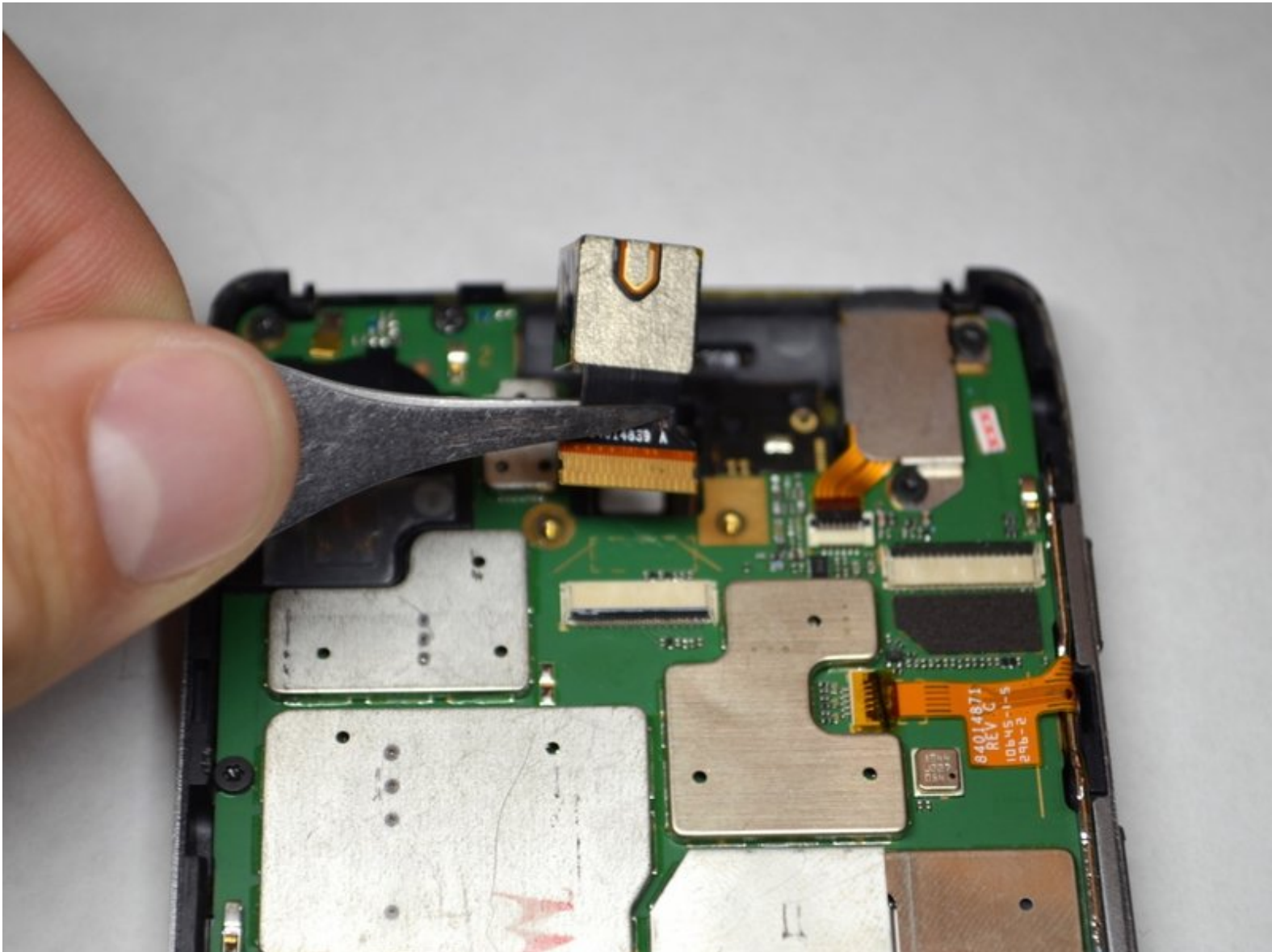




Motorola Droid RAZR HD Rear Facing Camera Replacement

A guide to replacing the rear camera of the Droid RAZR HD.

Written By: Ryan Meinhardt



INTRODUCTION

You just came back from vacation in Hawaii, but because your rear camera wasn't working, you didn't get a single picture. With this guide, you can make sure this doesn't happen again.



TOOLS:

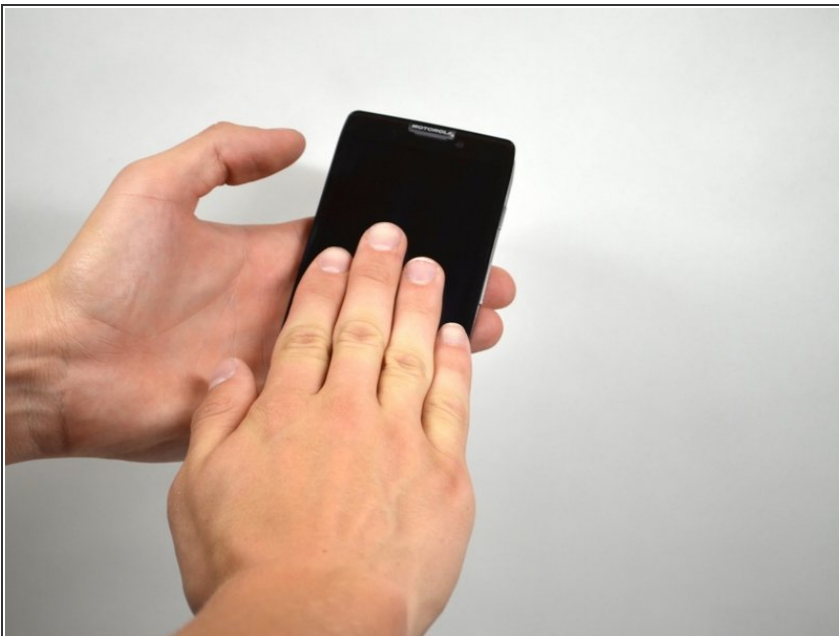
- [iFixit Opening Tools](#) (1)
 - [T4 Torx Screwdriver](#) (1)
 - [Tweezers](#) (1)
-

Step 1 — Front Panel Assembly



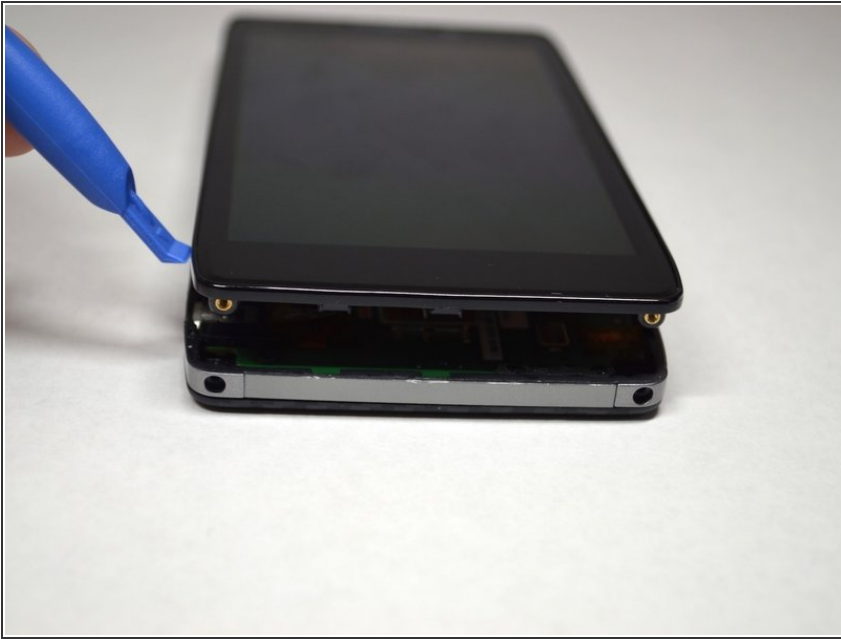
- ⚠ Power off the device before disassembly to avoid damage or harm from electrical surges.
- Remove the two 4.5mm screws in the bottom left and right corners of the device using a T4 Torx Screwdriver.

Step 2




- Holding the device in your hand, push the screen towards the top of the phone until it disconnects from the base of the phone.

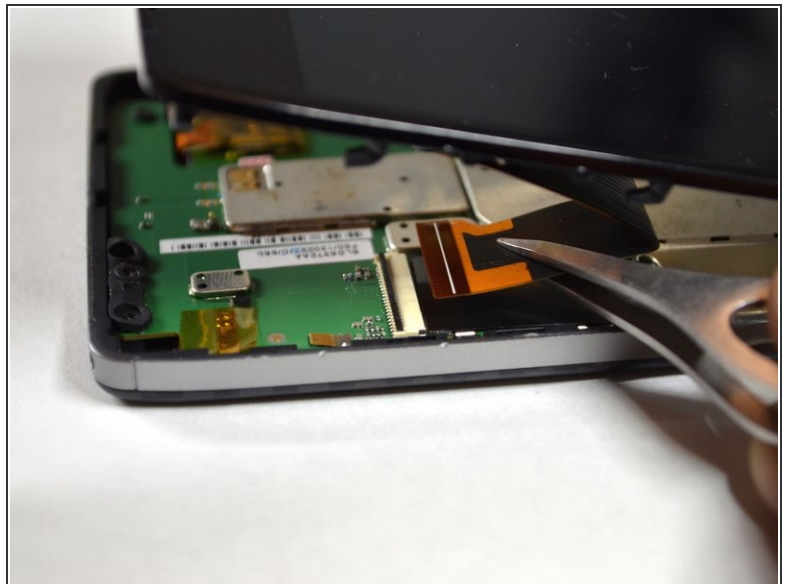
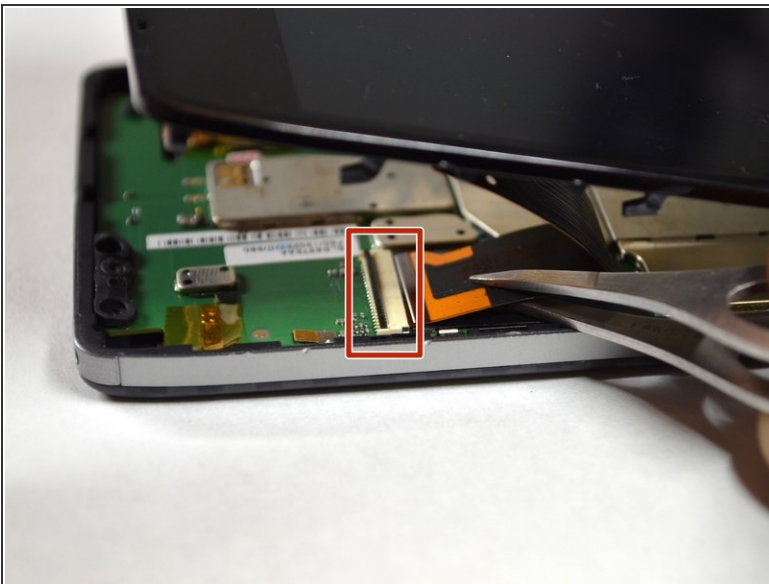
Step 3



- Use a plastic opening tool to lift the screen from the phone.

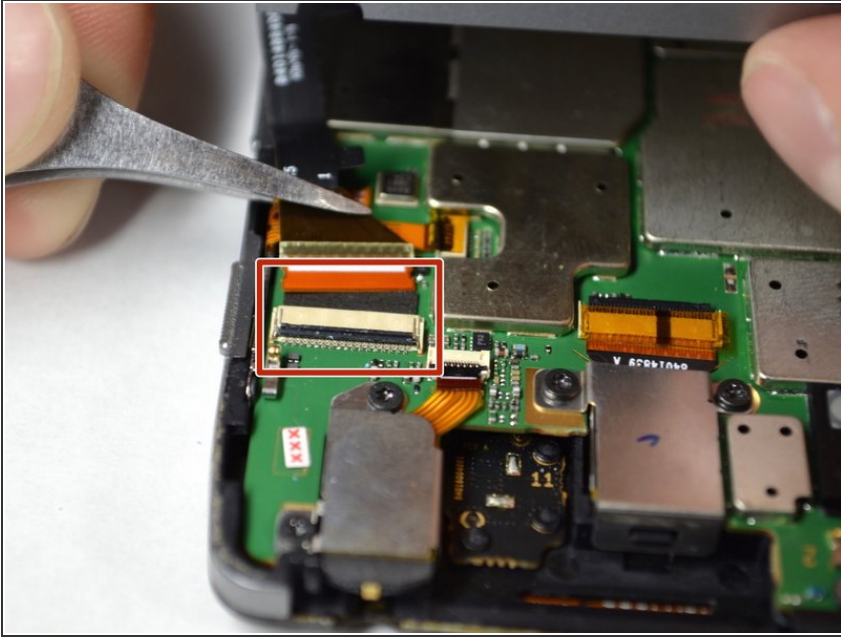
 Do not try to completely detach the screen; cables are still connected to the device and can be damaged.

Step 4



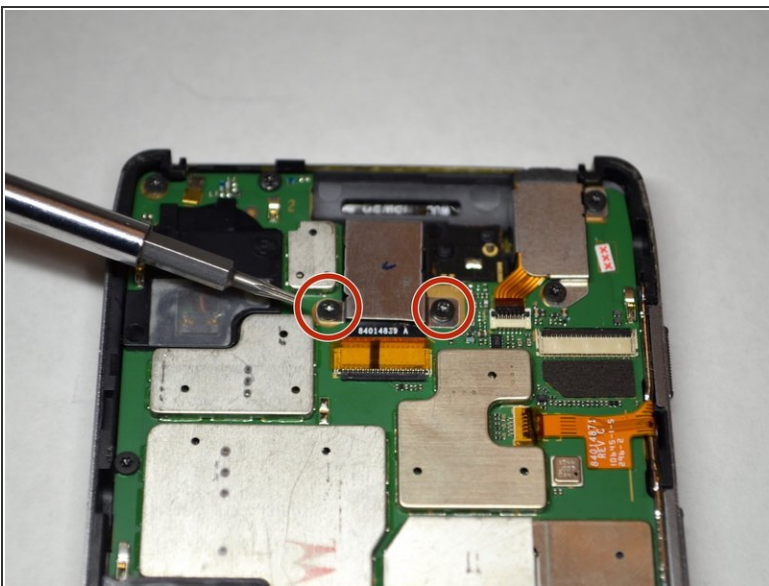
- Use tweezers to remove the yellow tape covering the lcd/digitizer cable connector.
- Carefully lift up the black locking tab to release the lcd/digitizer cable.
- ⓘ The cable connector is located on the bottom right section of the phone.

Step 5



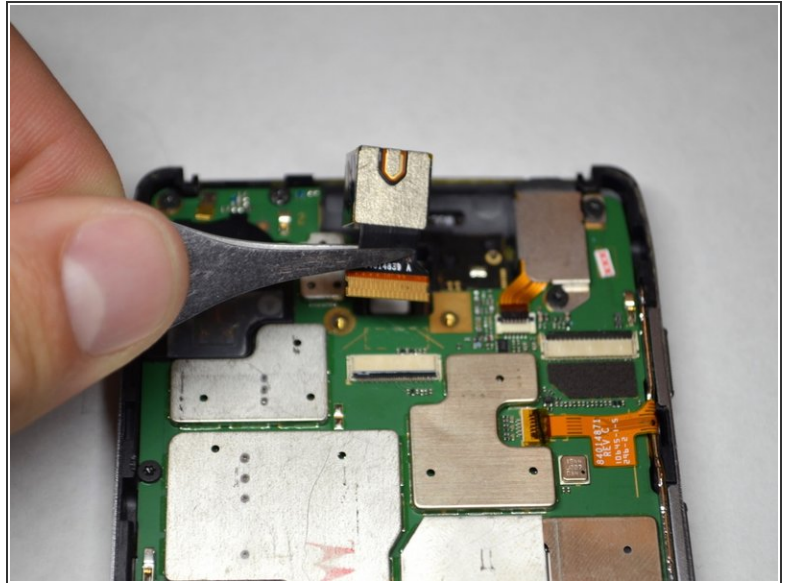
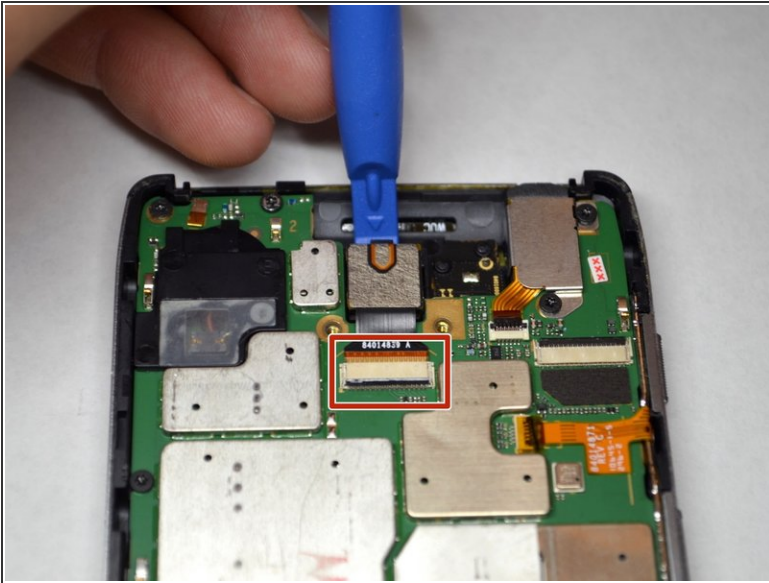
- Lift up the screen further to reveal another cable at the top of the device connecting the motherboard to the screen.
- ⓘ This connector is located on the top right section of the phone.
- Use tweezers to lift the black bar on top of the ZIF connector.
- Pull the ribbon cable out of the connector with tweezers.
- Now that there are no cables connecting the screen to the motherboard, remove the screen.

Step 6 — Rear Facing Camera



- Remove the two 3.5mm Torx T4 screws securing the rear facing camera.
- Using tweezers, remove the metal shield protecting the rear facing camera.

Step 7



- Use a plastic opening tool to lift up the rear camera.
- Use tweezers to lift and unlock the black bar on top of the rear camera's ZIF connector.
 - Pull the camera out of the connector.
- ⓘ You will need to unplug the rear camera from its connector on the motherboard.

To reassemble your device, follow these instructions in reverse order.