



# Motorola Droid Rear Case Replacement

This guide will take you through the delicate process of removing the rear case of the Motorola Droid.

Written By: Brett Hartt



---

## INTRODUCTION

This guide will take you through the delicate process of removing the rear panel of the Motorola Droid.

---



### TOOLS:

- [Spudger](#) (1)
  - [T5 Torx Screwdriver](#) (1)
-

## Step 1 — Battery



- Slide the battery cover downwards while applying pressure to the center of the battery cover with your thumb.
- Lift and remove the battery cover out from the phone.

## Step 2



- Grasp the upper left corner of the battery and lift it out of its housing.

## Step 3 — Rear Case



- Use a spudger to lift and remove the black plastic screw cover at the top of the phone near the camera.
- ⓘ The cover is attached by adhesive, so some force may be required.

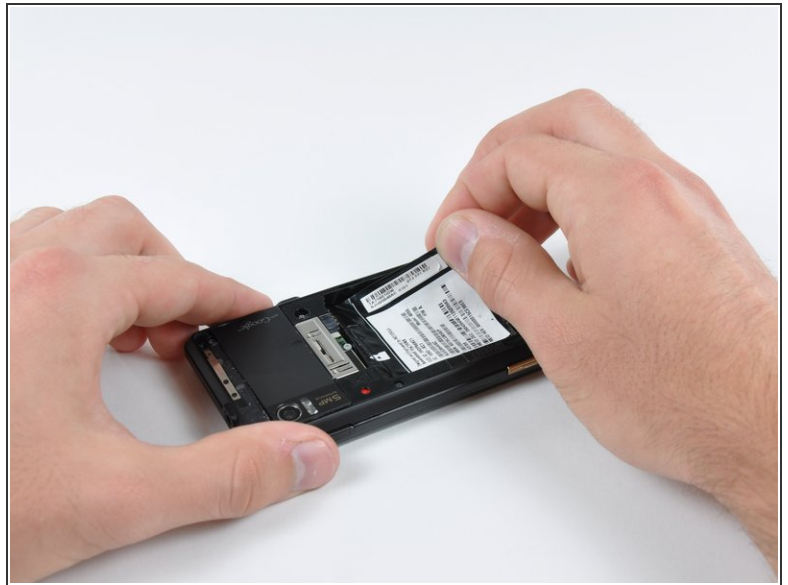
## Step 4



- Using the tip of a spudger, peel up one corner of the gold ribbon beneath the battery compartment.
- Peel the ribbon off the phone.



## Step 5



- Carefully peel the device information label that covers the motherboard EMI shields.
- i** This label contains important information specific to the phone. Remove it with care and keep it in a safe place.

## Step 6



- Insert the flat end of a spudger and pry the plastic camera cover up off the phone.
- !** The thin plastic cover is attached to the phone with an adhesive. Work slowly and carefully.

## Step 7



- Remove the seven 5.5 mm T5 Torx screws securing the rear case to the inner case.

## Step 8



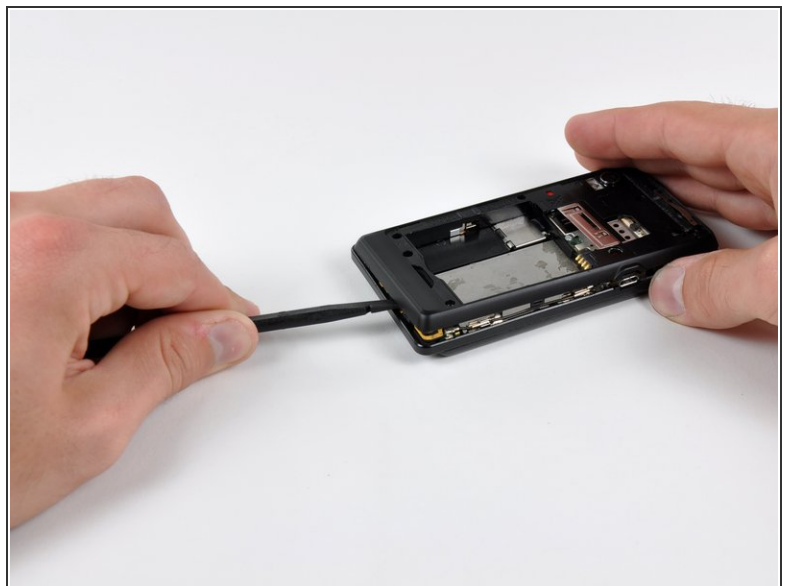
- Insert the flat end of a spudger and pry downwards to release the plastic tab holding the rear case to the motherboard screw.

## Step 9



- Gently insert a spudger between the rear case and front case at the top of the phone, near the audio jack.
- Carefully pry the top edge of the rear case up from the rest of the phone.

## Step 10



- With the spudger still inserted between the rear case and front case, slide the spudger along the right edge of the device, moving toward the bottom, prying as you go.
- Continue prying along the bottom edge of the device from right to left, freeing it from the front panel.

## Step 11



- Continue prying the rear case from the front case along the left side, moving from bottom to top.
- Lift the rear case up out of the phone.

To reassemble your device, follow these instructions in reverse order.