



A collection of disassembled Motorola RAZR V3i components, including the battery, back cover, front cover, and internal circuitry, laid out on a white surface. The components are arranged in a way that shows the internal structure of the phone, including the battery, camera, and various connectors. The Motorola logo is visible on the battery and the back cover. The text 'phonev' is visible in the bottom right corner of the image.

INTRODUCTION

Dr.Wreck has finally worked up the courage to tear apart his Brand New Motorola Droid! What's inside?! Keep it locked to [PhoneWreck](#) to see the details as they arrive!

This user-contributed teardown is in response to iFixit's [Droid bounty offer](#).



TOOLS:

- [Gobs of patience](#) (1)
 - [iFixit Opening Picks set of 6](#) (1)
 - [Staple Remover](#) (1)
 - [T6 Torx Screwdriver](#) (1)
 - [Will of Steel](#) (1)
-

Step 1 — Motorola Droid Teardown



- Thar she blows! Keep it locked on iFixit and [PhoneWreck](#) to see all of the details as they become available!

Step 2



- The first step is to remove the backcover and Battery
- Here you'll see two screws
 - Use your T6 to remove both the Black and Silver Screws.
- There are more screws but they are non-conveniently hidden. Finding these was the hardest part!

Step 3



- Non-conveniently, Motorola has made the chassis screws hard to find...
- Two are located underneath the plastic piece at the top of the device.
- Use a pin or very fine stiff wedge to lift this away from the double sided tape to reveal two more T6 screws.

Step 4



- Finding the rest of the fasteners is a royal pain...
- Did you think to look under the lens cover and google label? Probably not... you should! There's a T5 under there!
- Try not to mind Dr. Wreck's massive toe thumbs...

Step 5



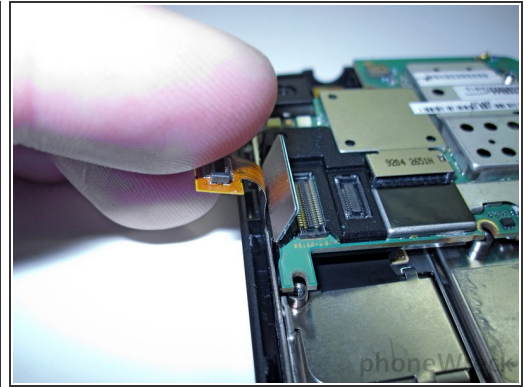
- You're not done yet! You still need to dig for fasteners at the bottom of the device!
- Luckily there are really *not* easy to find. See that gold grill underneath the battery cover? Yeah... peel that away.

Step 6



- With these screws removed, you can pry away the back part of the chassis.
- Use a wedge and work it carefully around the outside of the frame.

Step 7



- There it is!
- Use the T5 to remove the last silver PCB screw.
- Pull off the flex cables that fast the top of the logic board to the screen portion.

Step 8



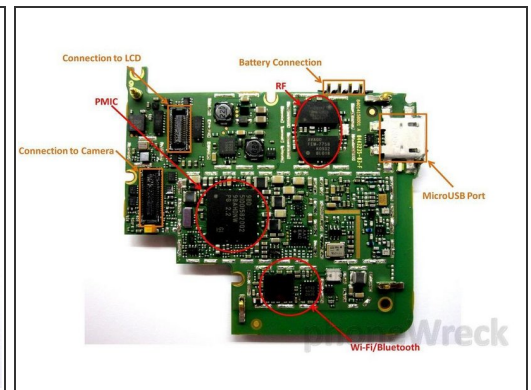
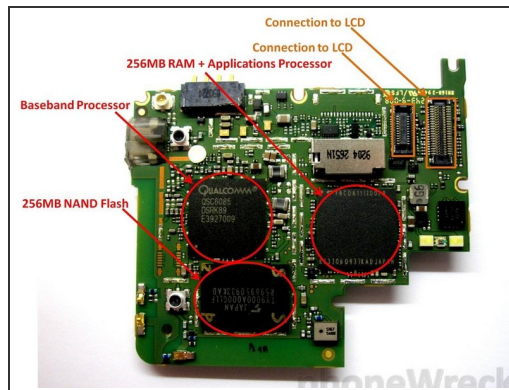
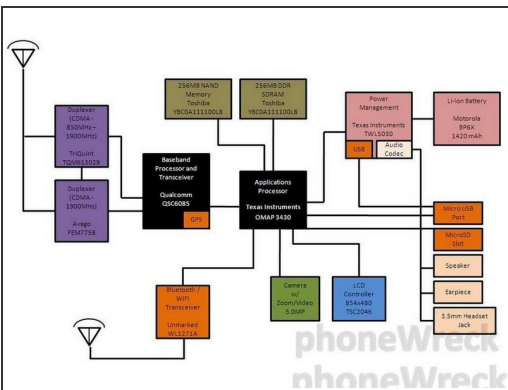
- Now you can flip out the PCB.
- Remove the flex off of the bottom of the PCB to free it.

Step 9



- Lastly, pry away the black frame that surrounds the keyboard of the device. This will unveil the sliding mechanism.

Step 10



- We removed the Cans (not a recommended step!!!) to see what IC's were on the board.
- Check out the Block Diagram for full details!

Step 11



- THAT'S IT! WHAT HAVE WE DONE!?
- Checkout <http://www.phonewreck.com/2009/11/11/mot...>
- Stay tuned to <http://www.phonewreck.com> for a full teardown analysis!

To reassemble your device, follow these instructions in reverse order.