



Motorola Droid Turbo 2 Front-Facing Camera Replacement

This guide shows how to replace your Droid's front-facing camera.

Written By: Natalie W



INTRODUCTION

Follow these steps to replace your broken Droid Turbo 2 front-facing camera.




TOOLS:

- [Tweezers](#) (1)
 - [Spudger](#) (1)
 - [SIM Card Eject Tool](#) (1)
 - [iFixit Opening Tools](#) (1)
 - [iFixit Opening Picks set of 6](#) (1)
 - [T4 Torx Screwdriver](#) (1)
-

Step 1 — Midframe




 Power off your phone before you begin working.

- Insert a SIM eject tool, SIM eject bit, or a straightened paperclip into the small hole in the SIM card tray.
- Press to eject the tray.
- Remove the SIM card tray assembly from the phone.

Step 2



- [Heat an iOpener](#) and apply it to the top edge of the phone for a minute.

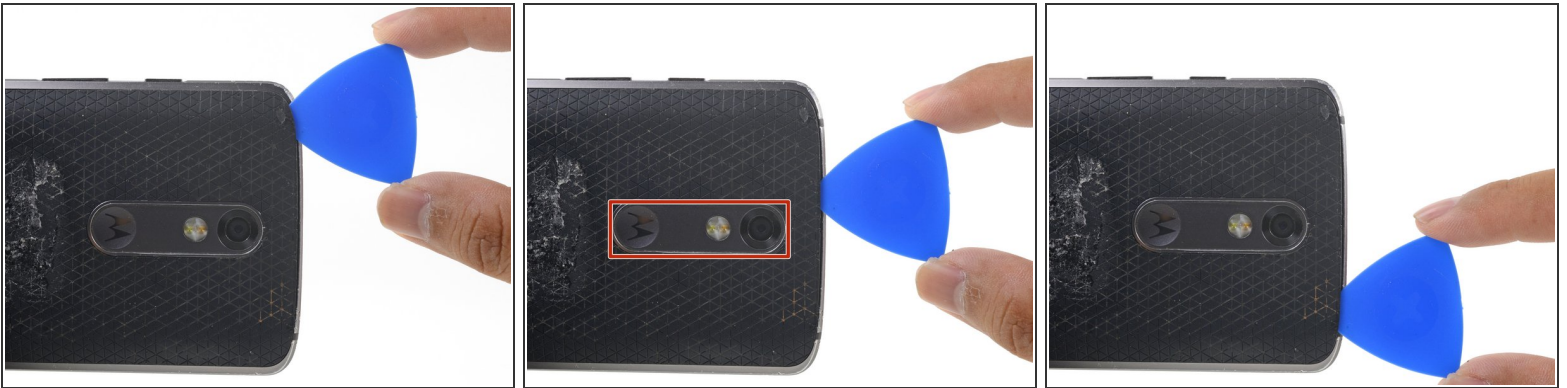
 A hair dryer, heat gun, or hot plate may also be used, but be careful not to overheat the phone—the display and internal battery are both susceptible to heat damage.

Step 3



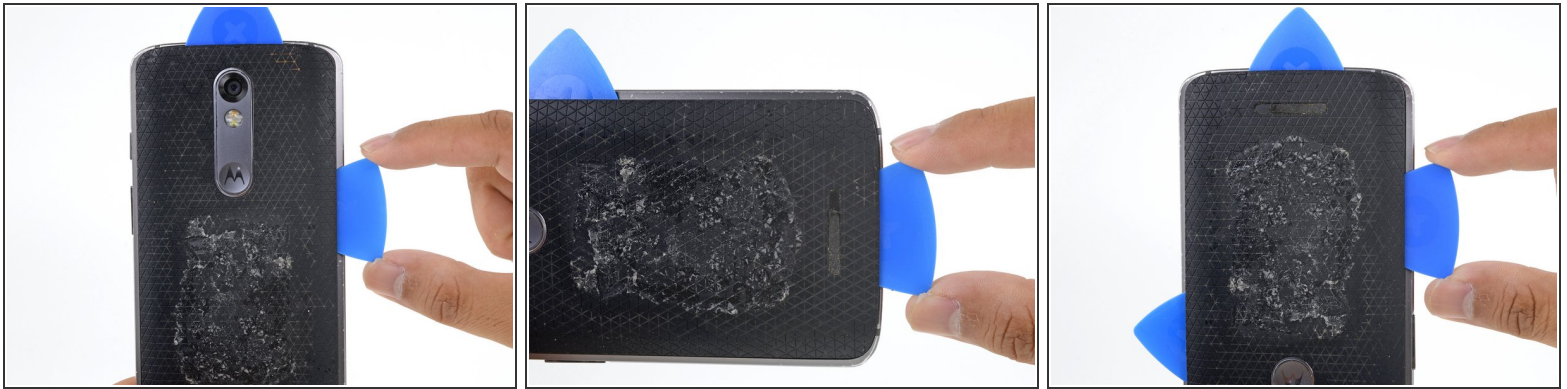
- Angle an opening pick and firmly press so that it slips under the back cover.
- ❗ Depending on the age of the phone, this can be difficult. Additional heating with the iOpener may help. You can [pry carefully with a metal spudger](#) to create a gap for the opening pick.

Step 4



- Slide the opening pick along the top edge of the phone to break up the adhesive.
- Use the pick to release the deeper areas but avoid slicing through the camera bezel area.

Step 5



- Repeat the iOpener heating and slicing procedures for the remaining three sides.
- ❗ Make sure to cut into the deeper areas as the back cover is held on by a large adhesive surface.

Step 6



- Once you have cut through the adhesive, slowly peel the back cover away from the frame.
- Remove the back cover.
- ✦ During reassembly, follow this [rear cover adhesive guide](#) to properly apply the pre-cut adhesive strip.

Step 7



- Insert an opening pick under the flash connector rubber cover and pry forward to remove it.

☑ To reinstall the cover, [align the cover](#) and use your finger to push it forward into place.

Step 8



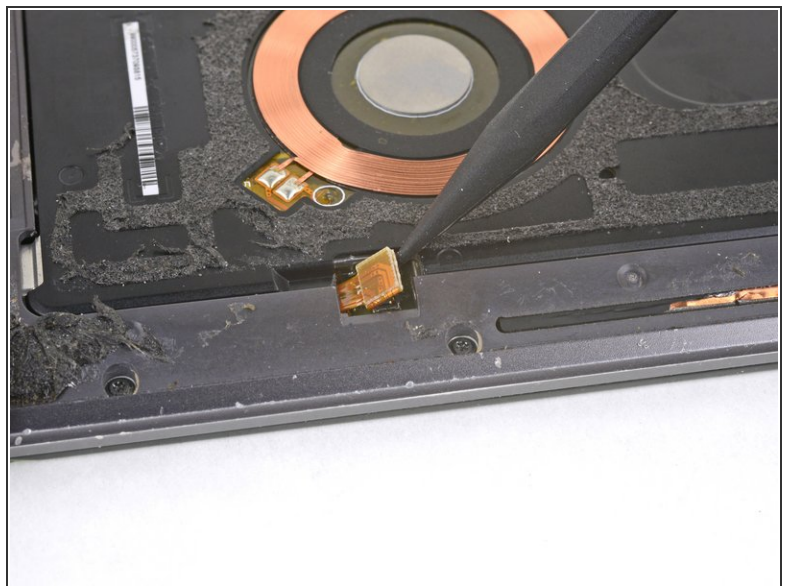
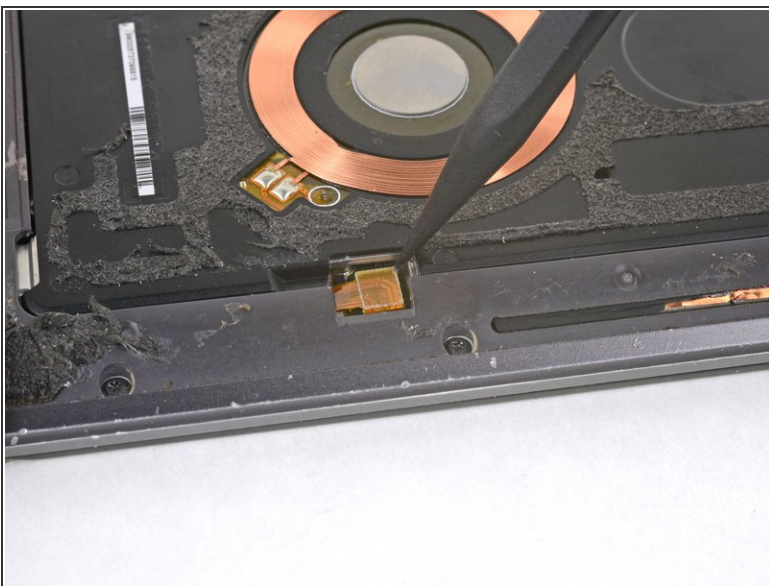
- Use the point of a spudger to pry up and remove the coil connector rubber cover.
- To reinstall the cover, [align the cover](#) and use your finger to push it forward into place.

Step 9



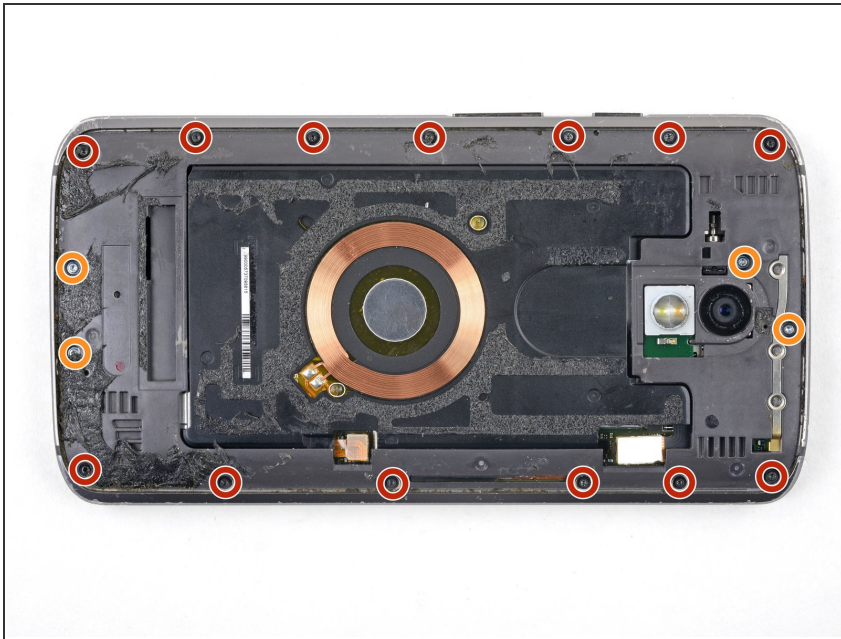
- Use the point of a spudger to pry up and disconnect the flash connector.
- ✦ To re-attach [press connectors](#) like this one, carefully align and press down on one side until it clicks into place, then repeat on the other side. Do not press down on the middle. If the connector is misaligned, the pins can bend, causing permanent damage.

Step 10



- Use the point of a spudger to pry up and disconnect the wireless charging coil connector.

Step 11



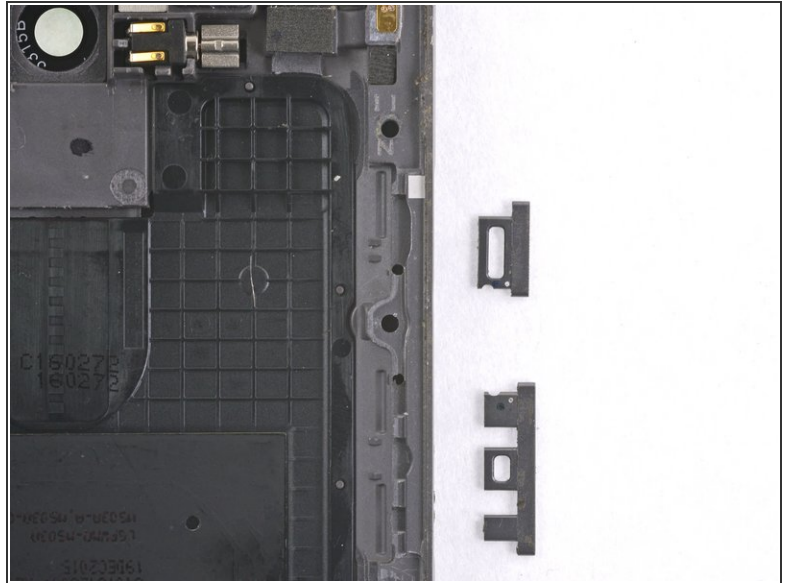
- Remove the following T3 screws securing the midframe:
 - Thirteen 3.1 mm black screws
 - Four 4.3 mm silver screws

Step 12



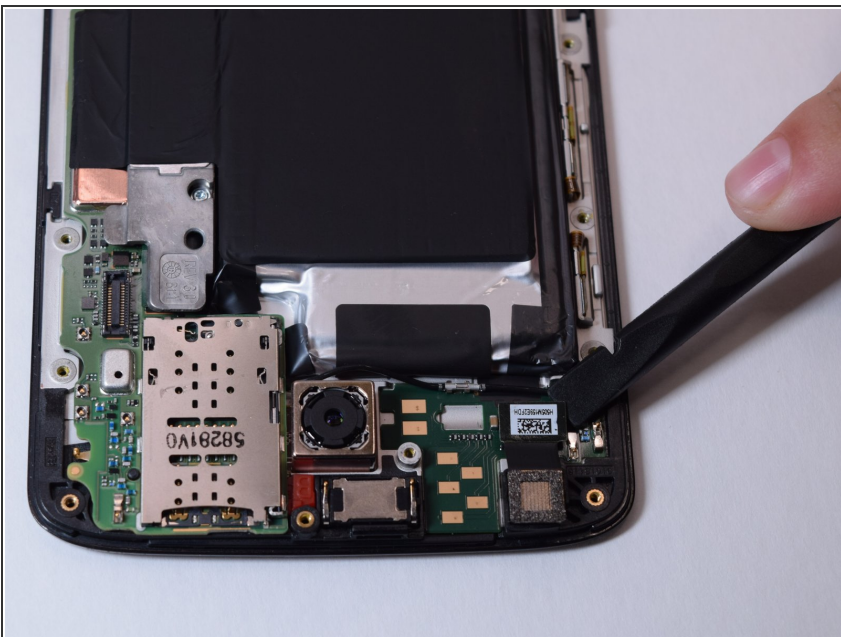
- Insert an opening pick along the frame seam and twist slightly to release the midframe from the phone.

Step 13



- Remove the midframe from the phone.
 - ❗ You can tape over the side buttons to prevent them from falling out during your repair.
 - ❗ If the buttons fall out of the midframe, reinsert them in the orientation as shown before you reinstall the midframe.

Step 14 — Front-Facing Camera



- Use the spudger to delicately pry up the front-facing camera and remove it from the phone.

To reassemble your device, follow these instructions in reverse order.