



Motorola Droid Turbo Battery Replacement

Replace the battery on your Motorola Droid Turbo.

Written By: Victor Chapman



INTRODUCTION

Use this guide to replace the battery on your Motorola Droid Turbo.

If your battery is swollen, [take appropriate precautions](#).



TOOLS:

- [iOpener](#) (1)
- [iFixit Opening Tools](#) (1)
- [T5 Torx Screwdriver](#) (1)
- [Spudger](#) (1)



PARTS:

- [Droid Turbo Replacement Battery](#) (1)

Step 1 — Rear Case



- [Prepare an iOpener](#) and lay it over the rear case to soften the adhesive on securing the rear case to the phone.

Step 2



- Use a plastic opening tool to pry the rear case off of the rest of the device.
- Remove the rear case.
 - ⓘ The wireless charging coil may try to stick to the rear case, so make sure to remove it from the case before fully separating the rear case from the rest of the device.

Step 3 — Midframe



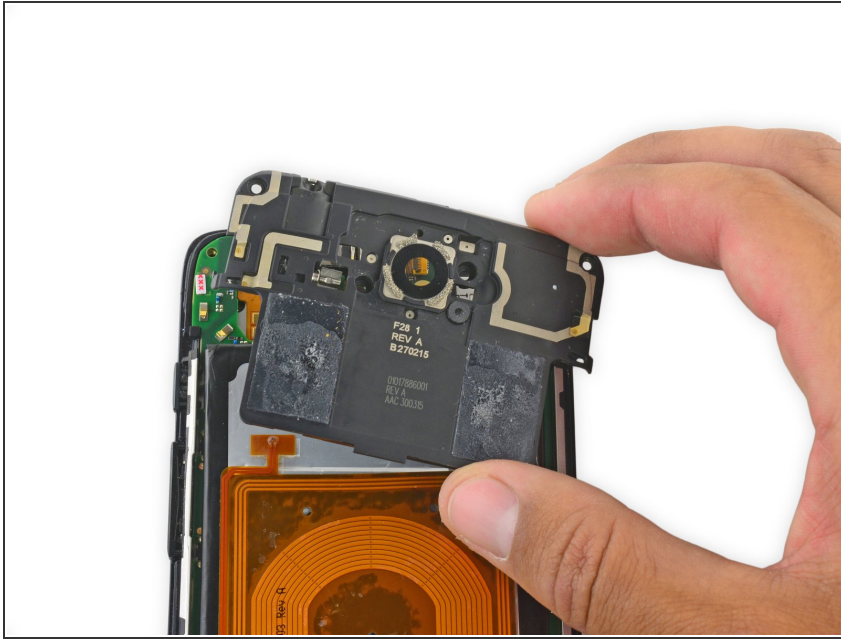
- Remove the midframe bezel.

Step 4



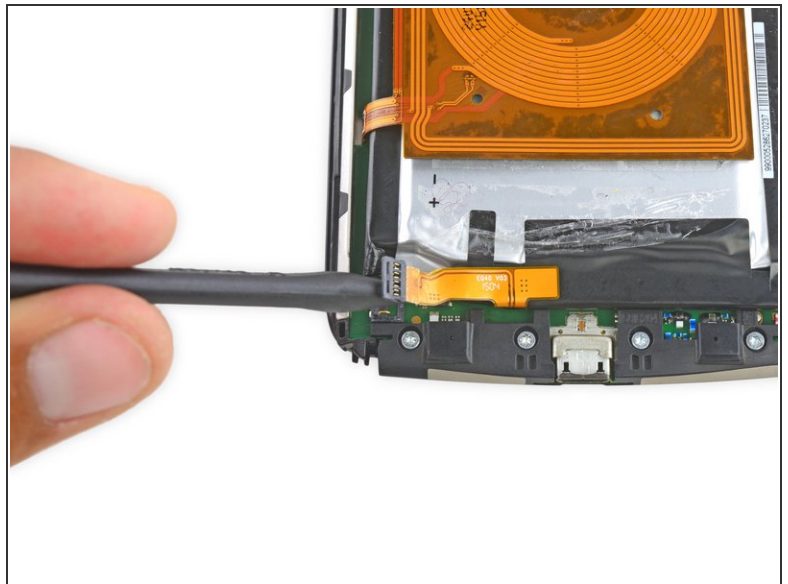
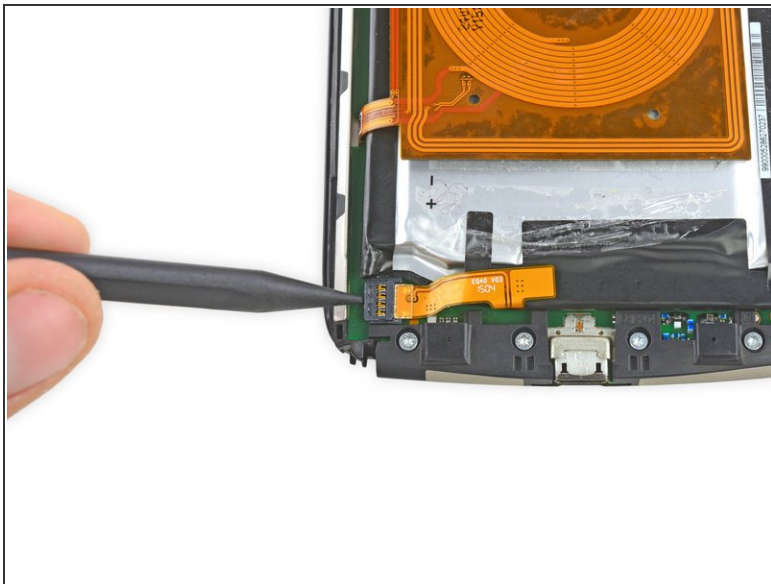
- Remove the four Torx T5 screws securing the midframe plate.

Step 5



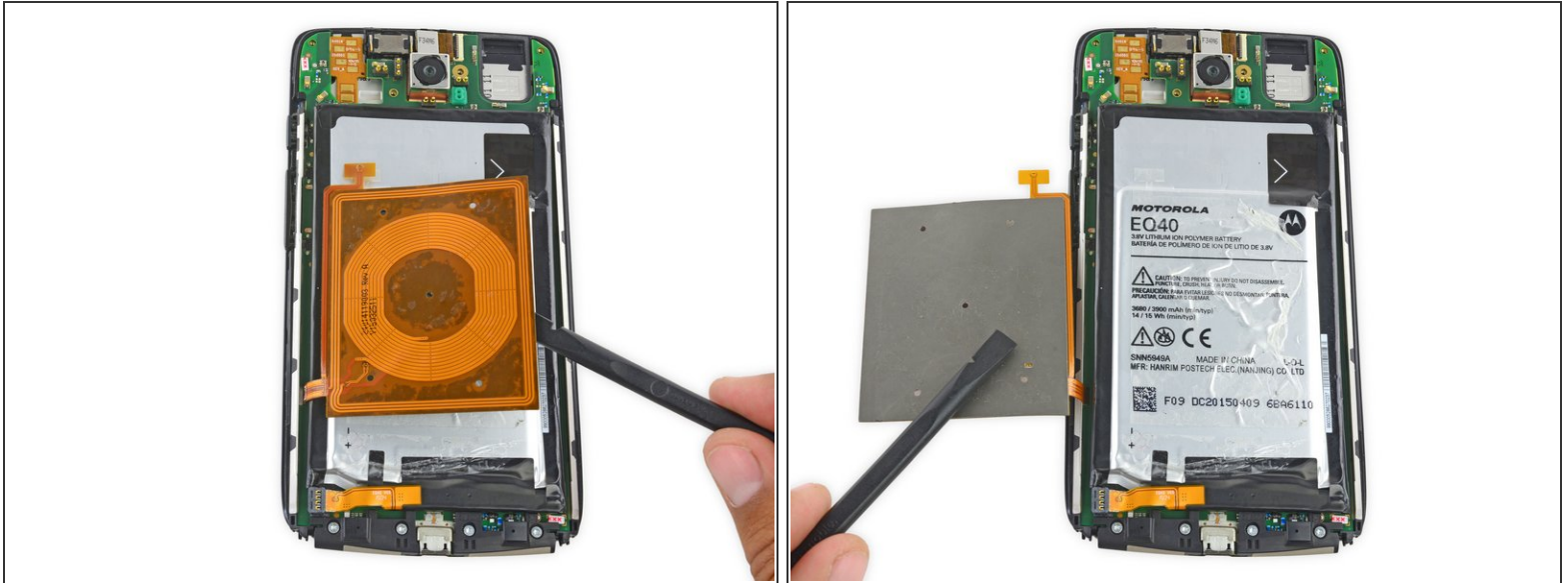
- Remove the midframe.

Step 6 — Battery



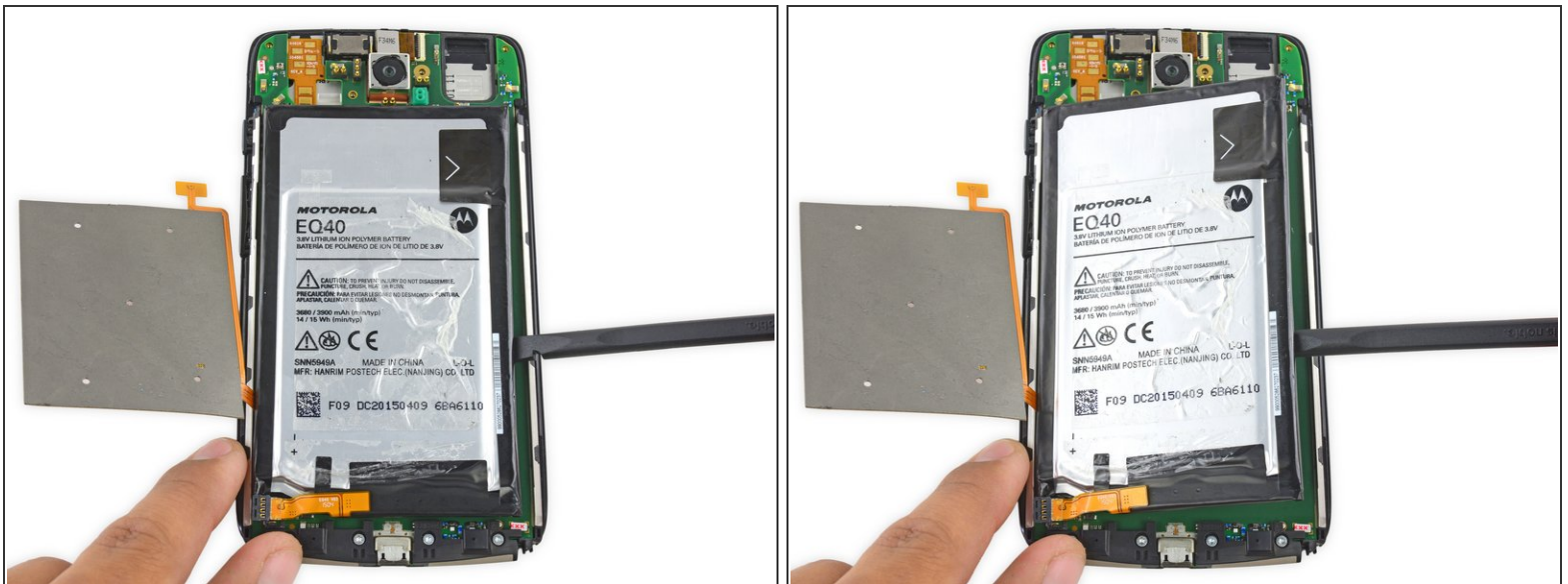
- Use the point of a spudger to pop up the battery connector.

Step 7



- Fold the wireless charging coil away from the battery.

Step 8



- Use a spudger to gently pry the battery up from the rest of the device.
- ⓘ The battery is secured with some moderate adhesive, so some force may be necessary.

To reassemble your device, follow these instructions in reverse order.