



Motorola Droid Turbo Display Assembly Replacement

Replace the display assembly on your Motorola Droid Turbo.

Written By: Geoff Wacker



INTRODUCTION

Use this guide to replace the display assembly on your Motorola Droid Turbo. If your replacement display assembly does not include a earpiece speaker, you'll need to swap your existing one over to it.



TOOLS:

- [iFixit Opening Tools](#) (1)
- [iOpener](#) (1)
- [T5 Torx Screwdriver](#) (1)
- [Spudger](#) (1)
- [Jimmy](#) (1)
- [Tweezers](#) (1)



PARTS:

- [Droid Turbo Screen](#) (1)

Step 1 — Rear Case



- [Prepare an iOpener](#) and lay it over the rear case to soften the adhesive on securing the rear case to the phone.

Step 2



- Use a plastic opening tool to pry the rear case off of the rest of the device.
- Remove the rear case.
 - ⓘ The wireless charging coil may try to stick to the rear case, so make sure to remove it from the case before fully separating the rear case from the rest of the device.

Step 3 — Midframe



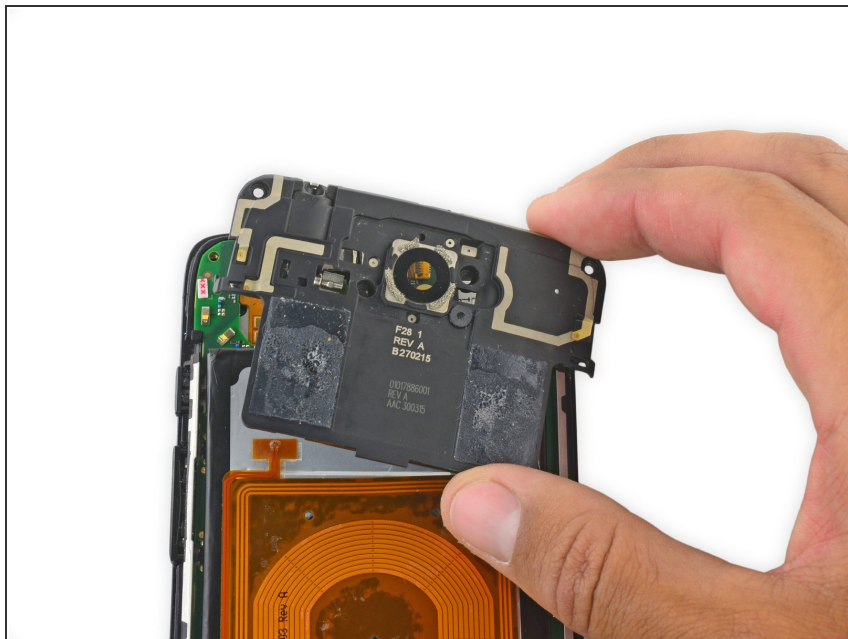
- Remove the midframe bezel.

Step 4



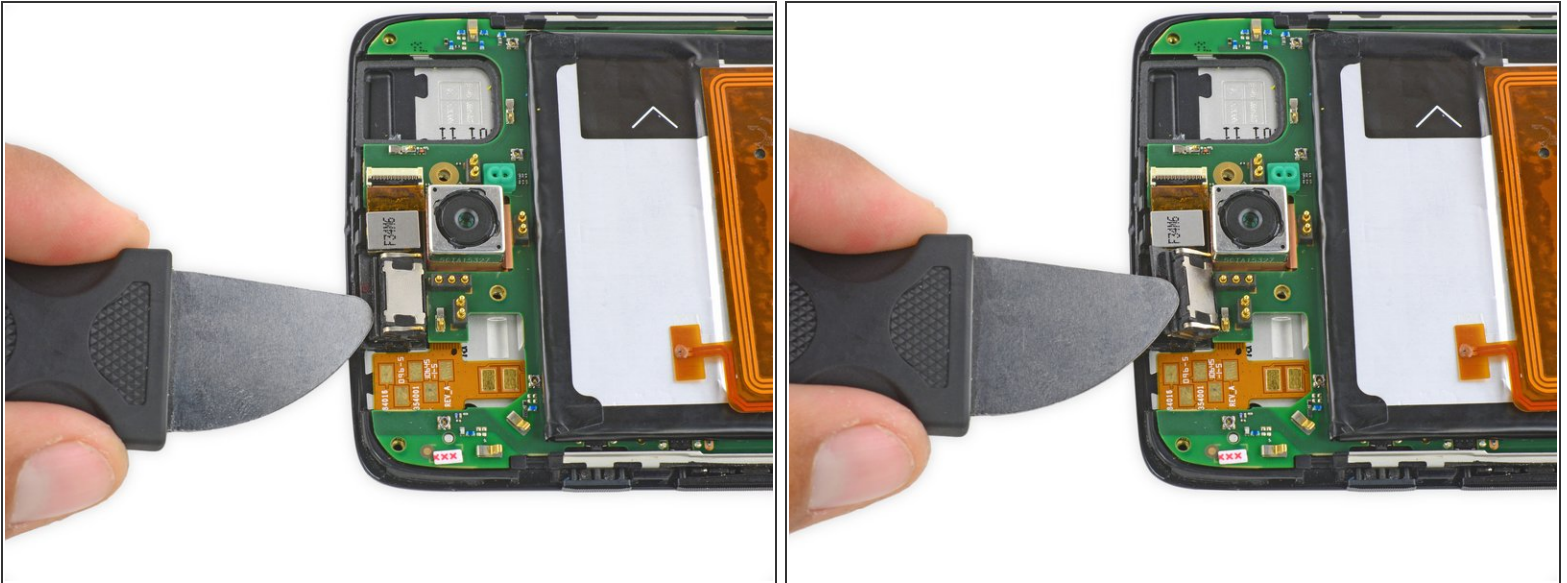
- Remove the four Torx T5 screws securing the midframe plate.

Step 5



- Remove the midframe.

Step 6 — Earpiece Speaker



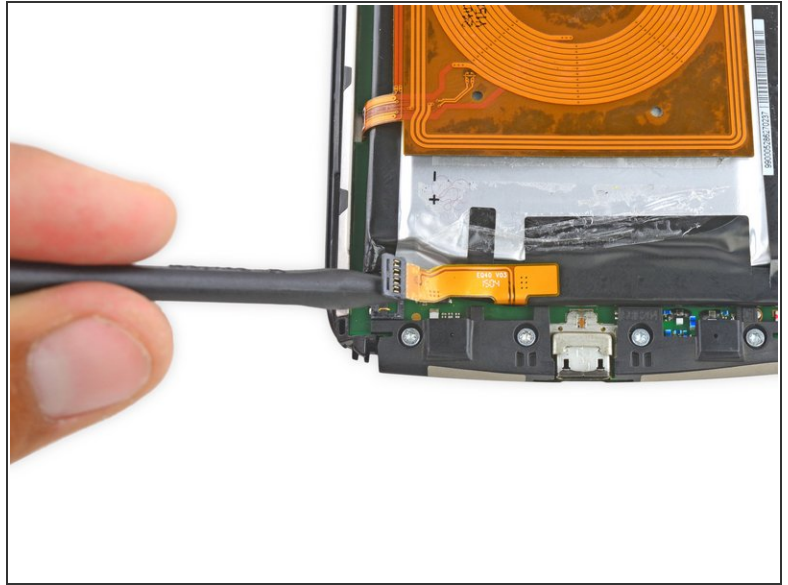
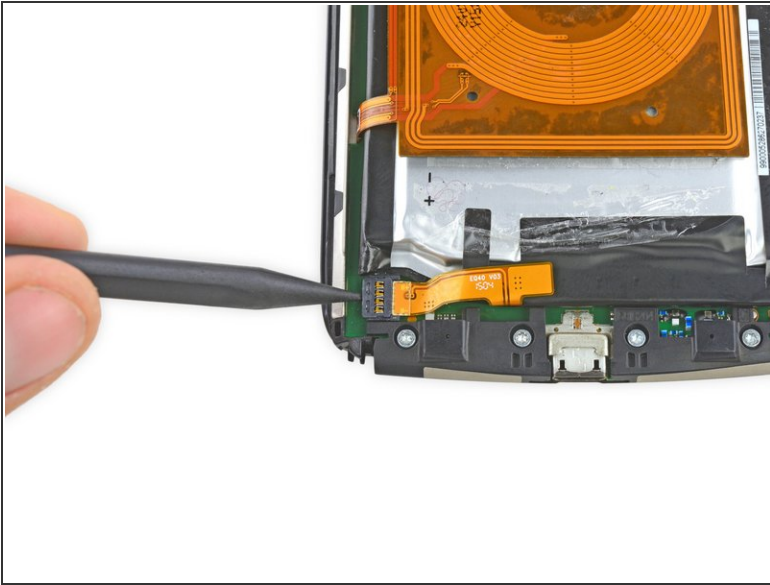
- Use a Jimmy to pry under the speaker and lift to remove it.

⚠ Be sure to place your tool under the entire speaker assembly, against the plastic frame, and pry there.

⚠ These photos show an incorrect tool position—prying this high up on the speaker assembly may damage it. Place your tool *underneath* the speaker assembly, not on the edge as shown here.

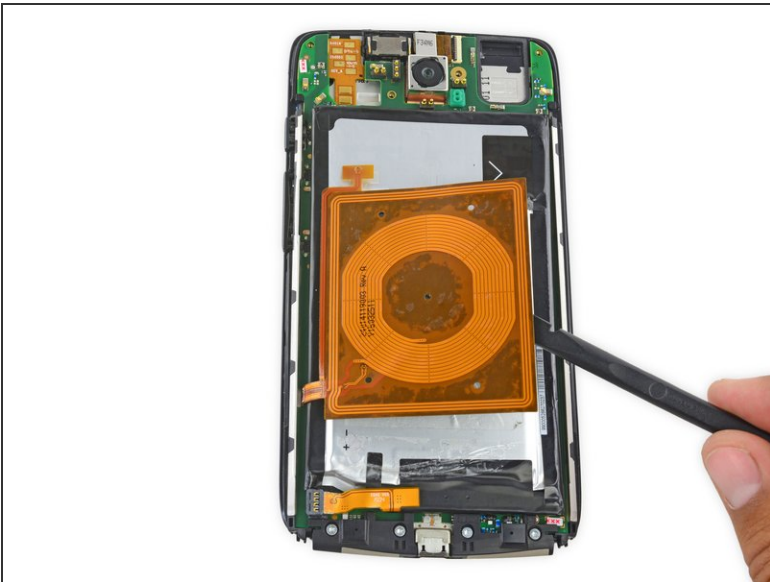
ⓘ The speaker is secured with some light adhesive, so some force may be required.

Step 7 — Battery



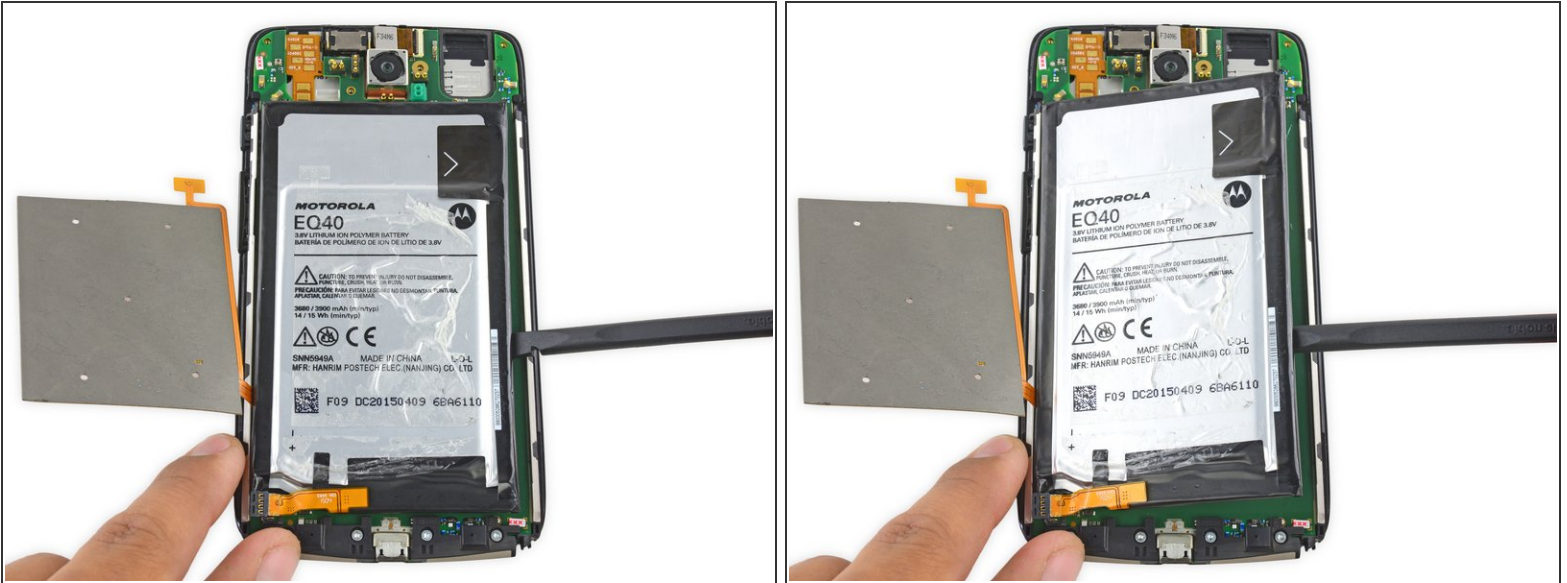
- Use the point of a spudger to pop up the battery connector.

Step 8



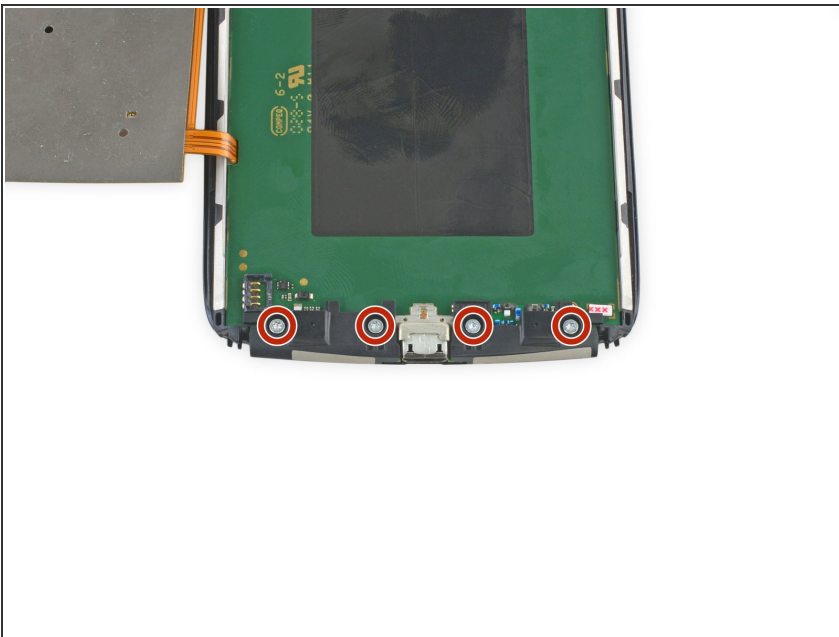
- Fold the wireless charging coil away from the battery.

Step 9



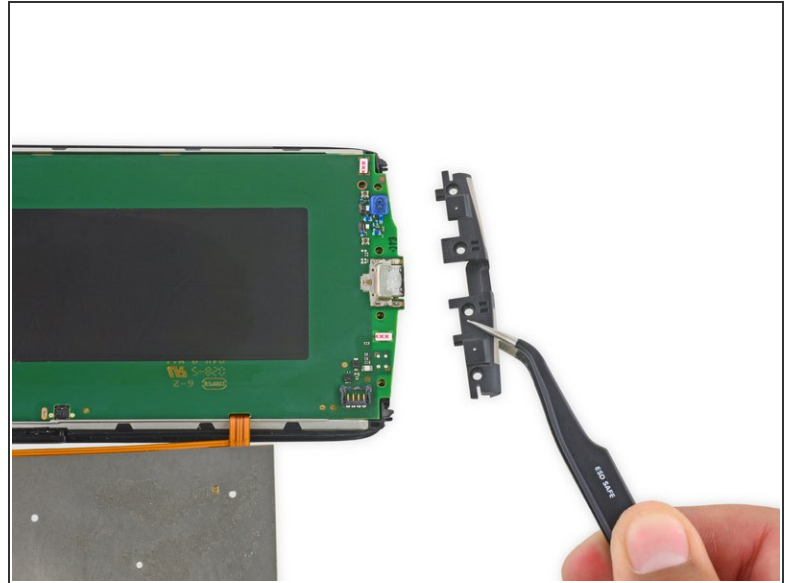
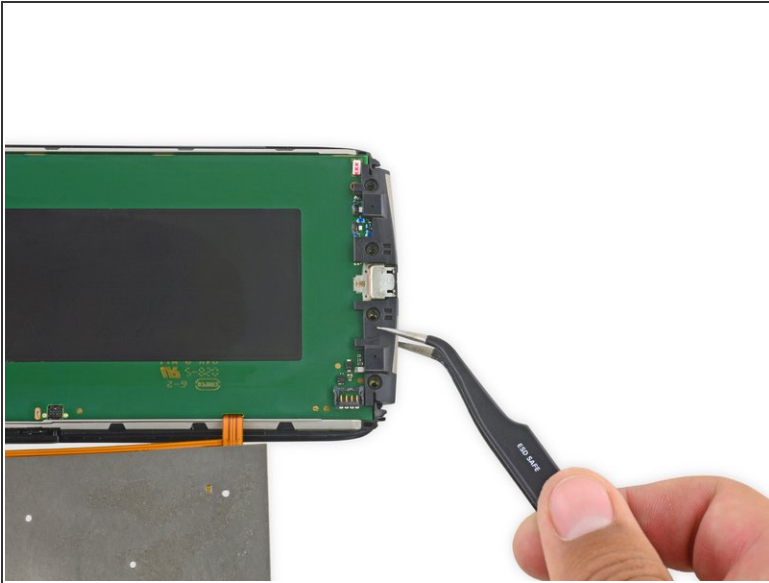
- Use a spudger to gently pry the battery up from the rest of the device.
- ⓘ The battery is secured with some moderate adhesive, so some force may be necessary.

Step 10 — Display Assembly



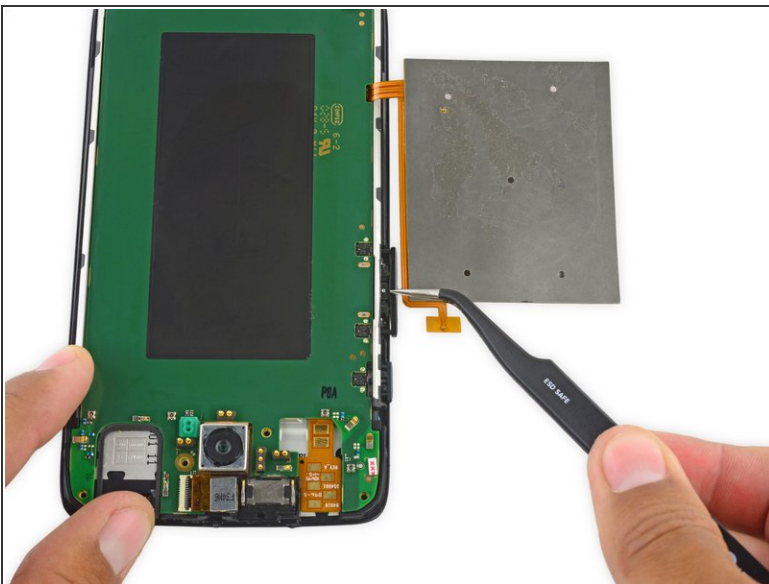
- Remove the four Torx T5 screws securing the lower antenna board to the motherboard.

Step 11



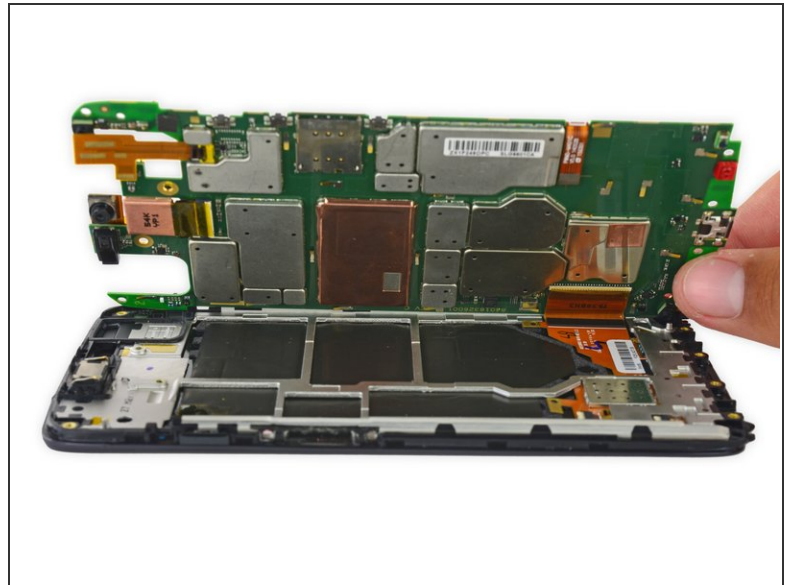
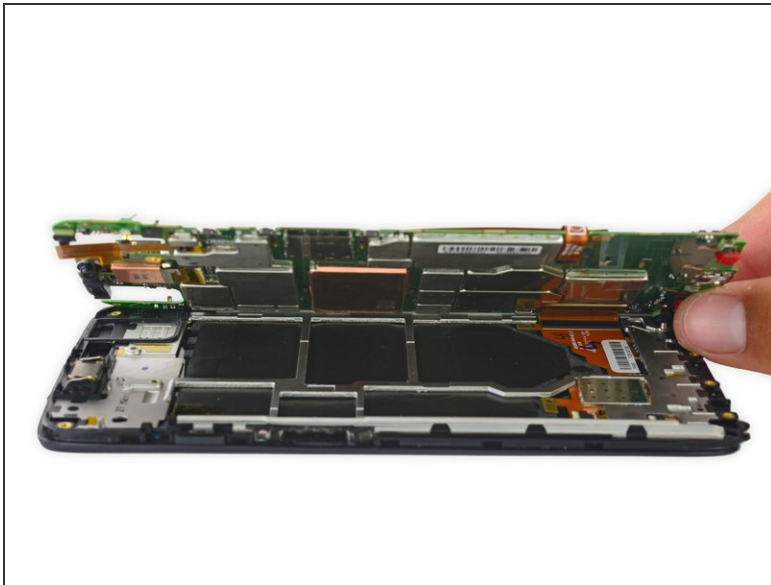
- Remove the lower antenna board.

Step 12



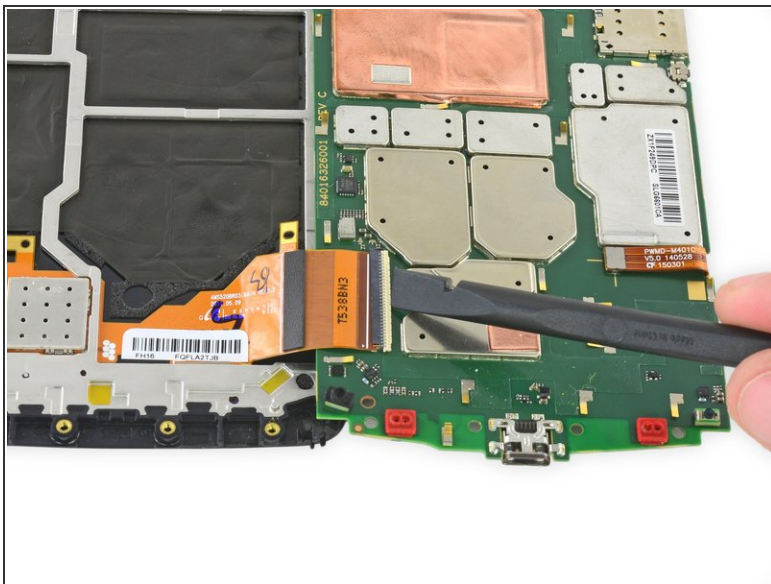
- Remove the SIM card holder/volume button rocker.

Step 13



- Carefully lift up the motherboard to expose the display connector.

Step 14



- Use the flat end of a spudger to flip up the retaining flap on the display ZIF connector.
- Pull the display ribbon cable free of the connector.

To reassemble your device, follow these instructions in reverse order.