



Motorola Droid Turbo Front Facing Camera Replacement

Replace the front-facing camera on your Motorola Droid Turbo.

Written By: Luis Arangu



INTRODUCTION

Use this guide to replace the front-facing camera on your Motorola Droid Turbo.



TOOLS:

- [iFixit Opening Tools](#) (1)
- [iOpener](#) (1)
- [T5 Torx Screwdriver](#) (1)
- [Spudger](#) (1)
- [Tweezers](#) (1)



PARTS:

- [Droid Turbo Front Camera](#) (1)

Step 1 — Rear Case



- [Prepare an iOpener](#) and lay it over the rear case to soften the adhesive on securing the rear case to the phone.

Step 2



- Use a plastic opening tool to pry the rear case off of the rest of the device.
- Remove the rear case.
 - ⓘ The wireless charging coil may try to stick to the rear case, so make sure to remove it from the case before fully separating the rear case from the rest of the device.

Step 3 — Midframe



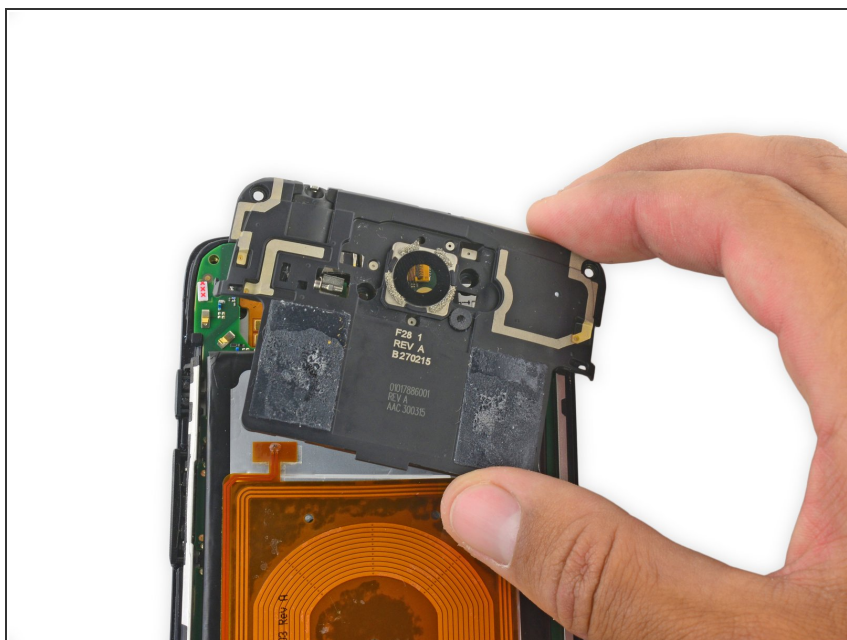
- Remove the midframe bezel.

Step 4



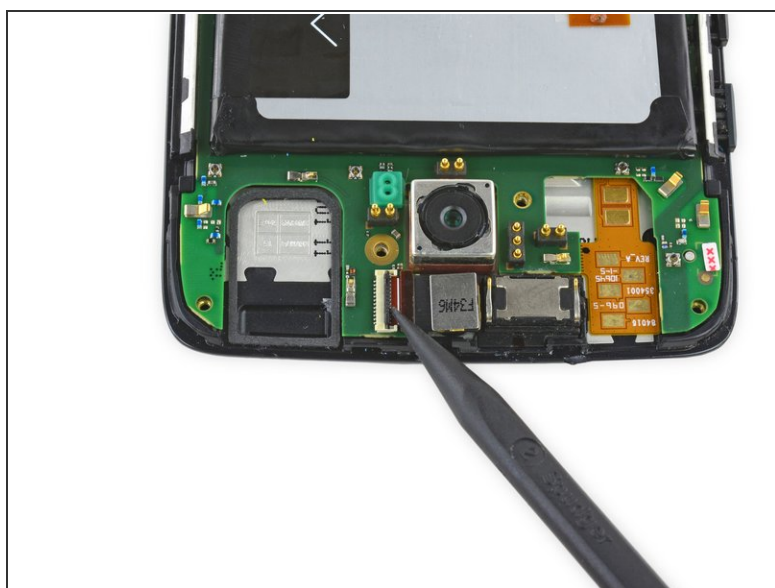
- Remove the four Torx T5 screws securing the midframe plate.

Step 5



- Remove the midframe.

Step 6 — Front Facing Camera



- Use the pointed end of a spudger to flip up the black retaining flap of the front facing camera's ZIF connector.

Step 7



- Remove the front-facing camera.

To reassemble your device, follow these instructions in reverse order.