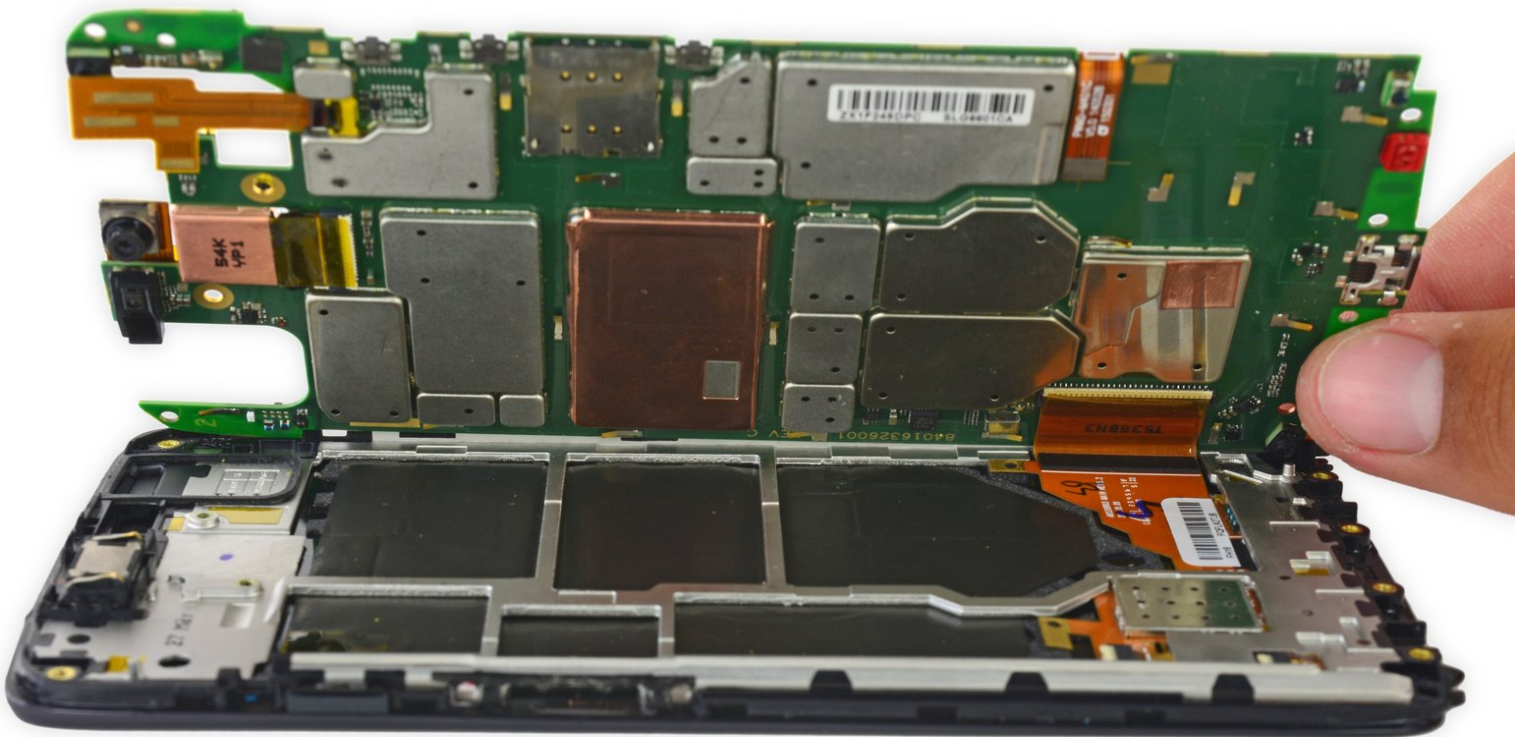




# Motorola Droid Turbo Motherboard Replacement

Replace the motherboard on your Motorola Droid Turbo.

Written By: Luis Arangu



# INTRODUCTION

Use this guide to replace the motherboard on your Motorola Droid Turbo.



## TOOLS:

- [Spudger](#) (1)
- [Tweezers](#) (1)
- [iOpener](#) (1)
- [T5 Torx Screwdriver](#) (1)
- [iFixit Opening Tools](#) (1)



## PARTS:

- [Droid Turbo Conductor](#) (1)

## Step 1 — Rear Case



- [Prepare an iOpener](#) and lay it over the rear case to soften the adhesive on securing the rear case to the phone.

## Step 2



- Use a plastic opening tool to pry the rear case off of the rest of the device.
- Remove the rear case.
  - ⓘ The wireless charging coil may try to stick to the rear case, so make sure to remove it from the case before fully separating the rear case from the rest of the device.

## Step 3 — Midframe



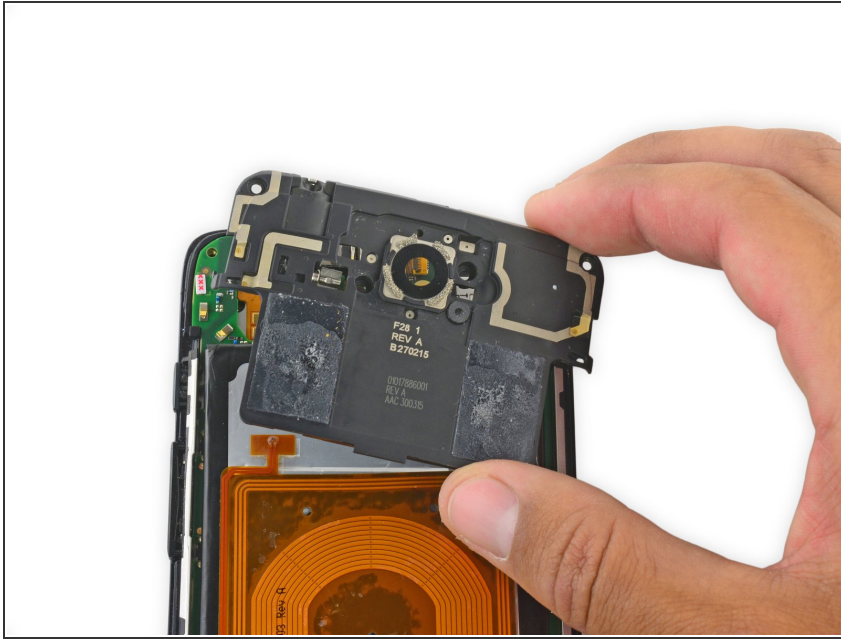
- Remove the midframe bezel.

## Step 4



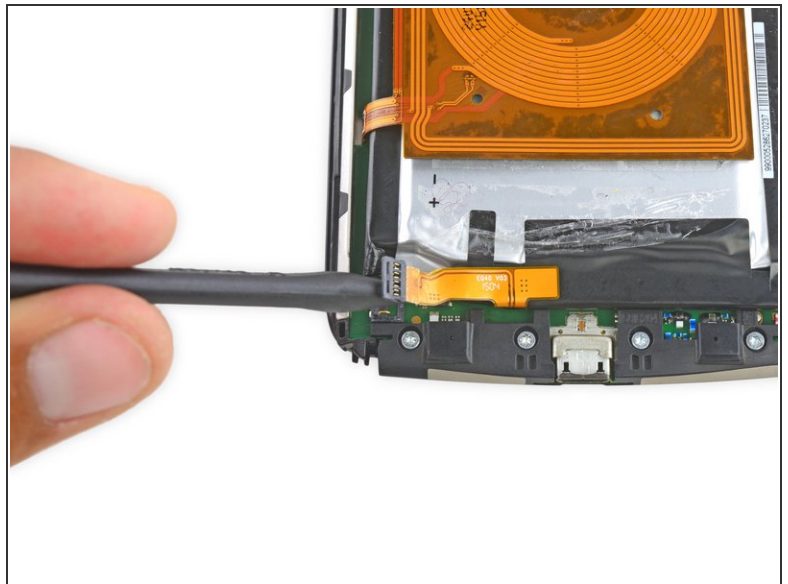
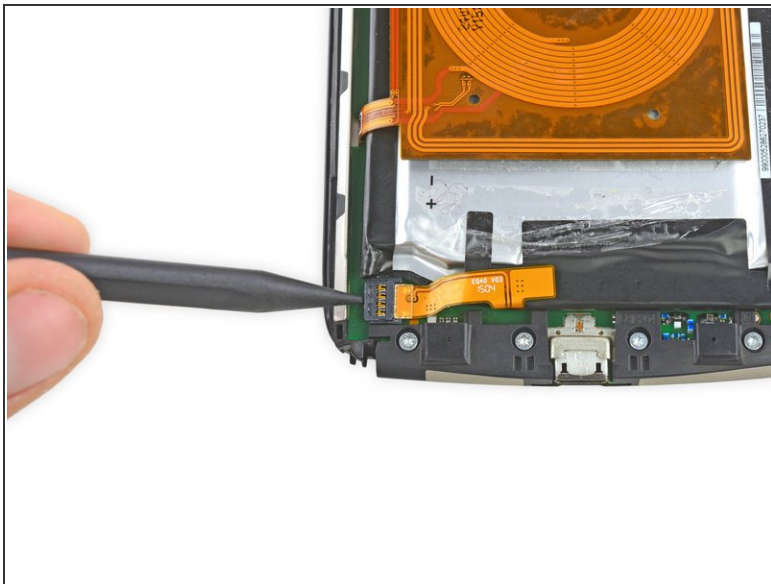
- Remove the four Torx T5 screws securing the midframe plate.

## Step 5



- Remove the midframe.

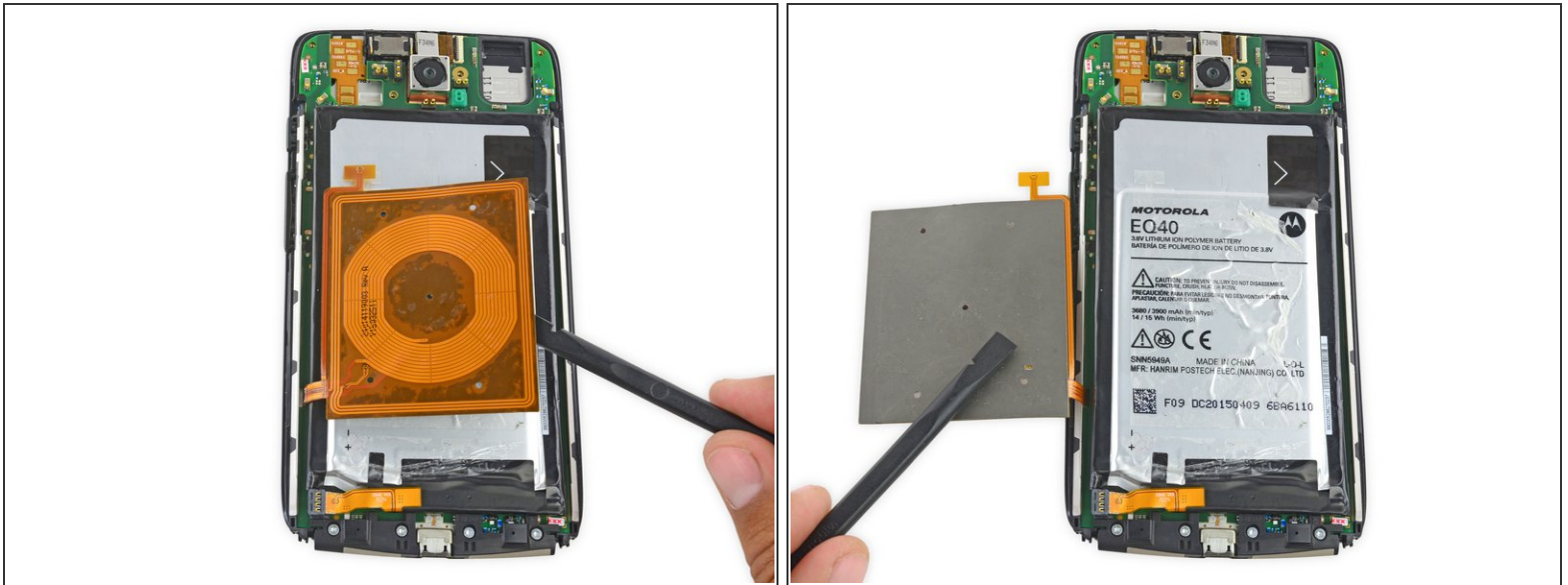
## Step 6 — Battery



- Use the point of a spudger to pop up the battery connector.

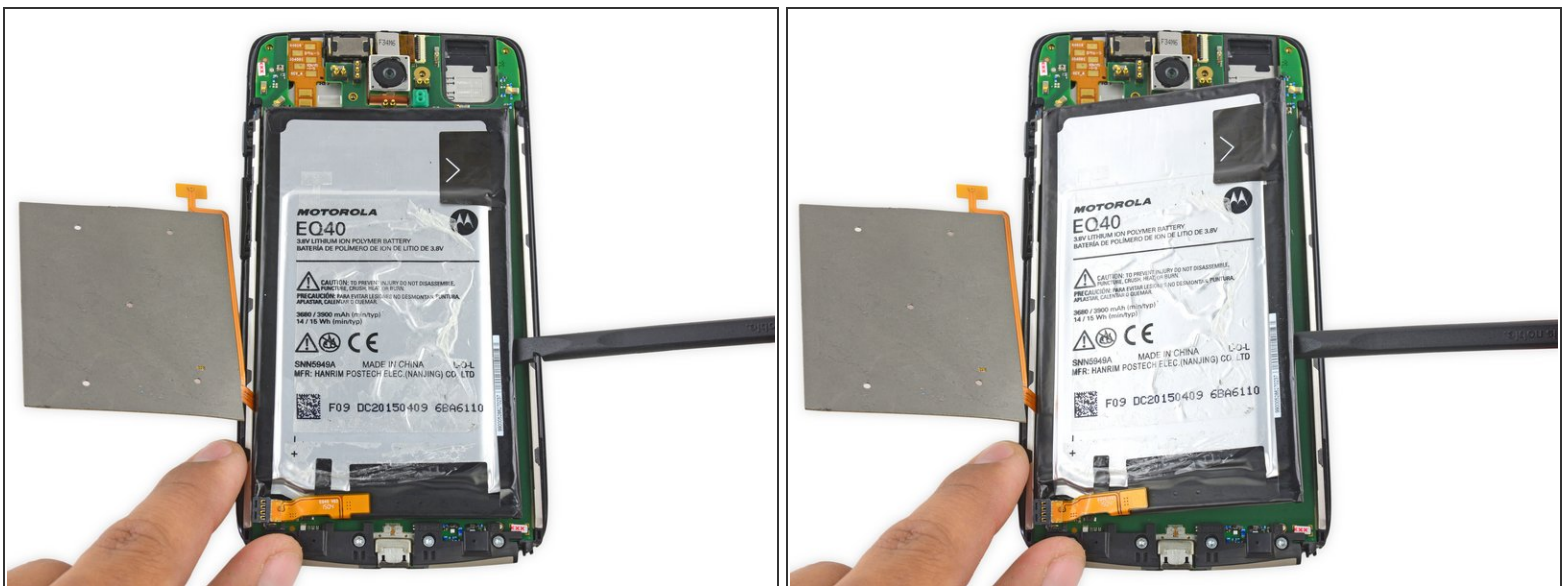


## Step 7



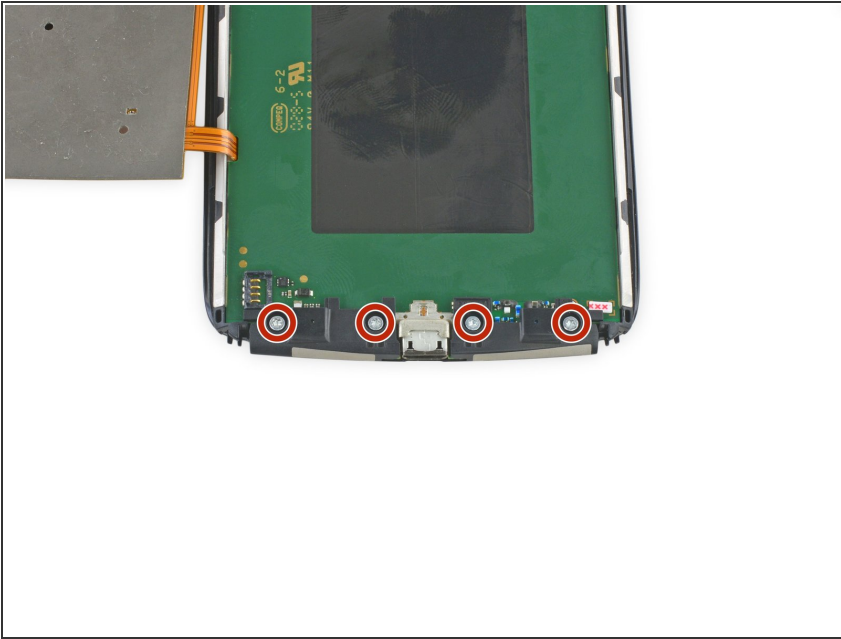
- Fold the wireless charging coil away from the battery.

## Step 8



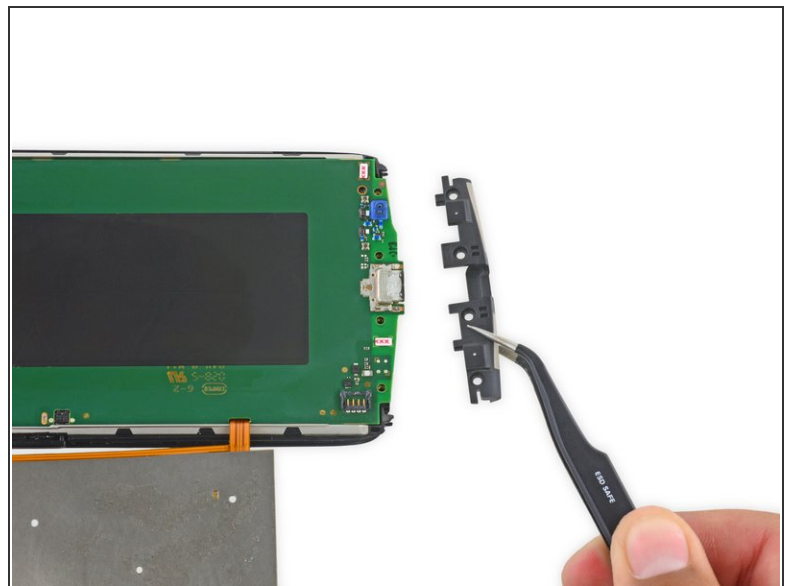
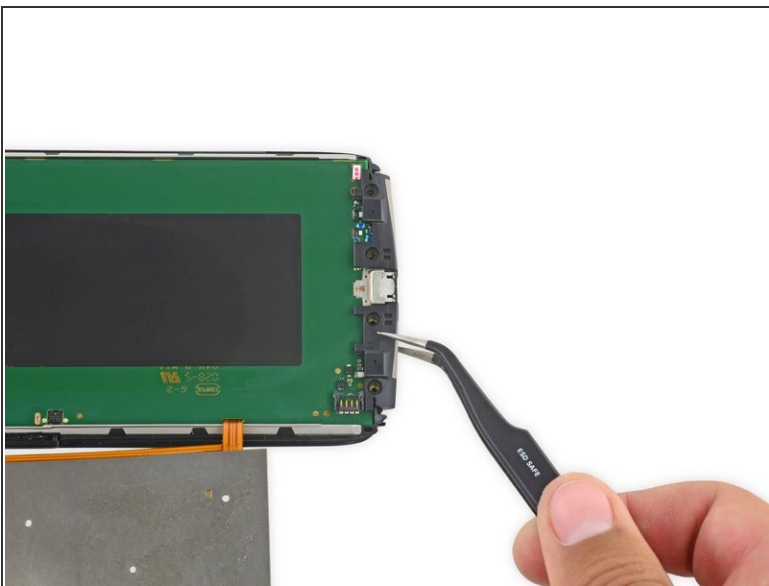
- Use a spudger to gently pry the battery up from the rest of the device.
- ⓘ The battery is secured with some moderate adhesive, so some force may be necessary.

## Step 9 — Motherboard



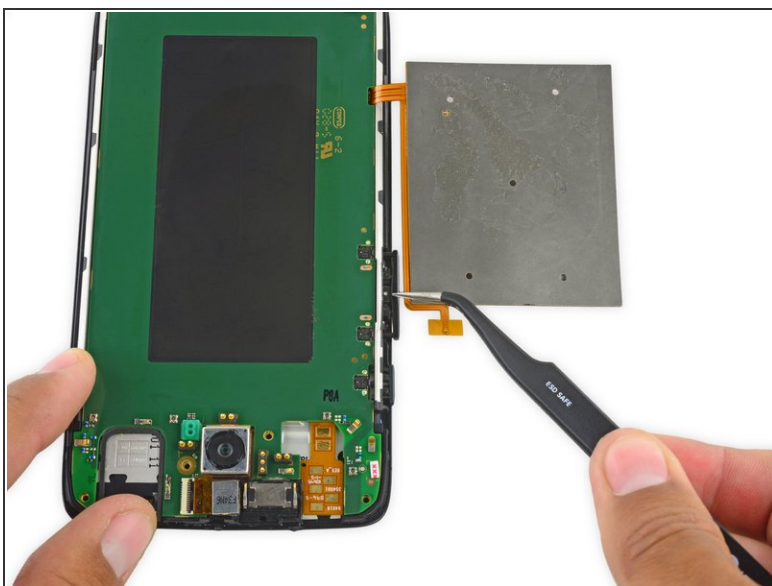
- Remove the four Torx T5 screws securing the lower antenna board to the motherboard.

## Step 10



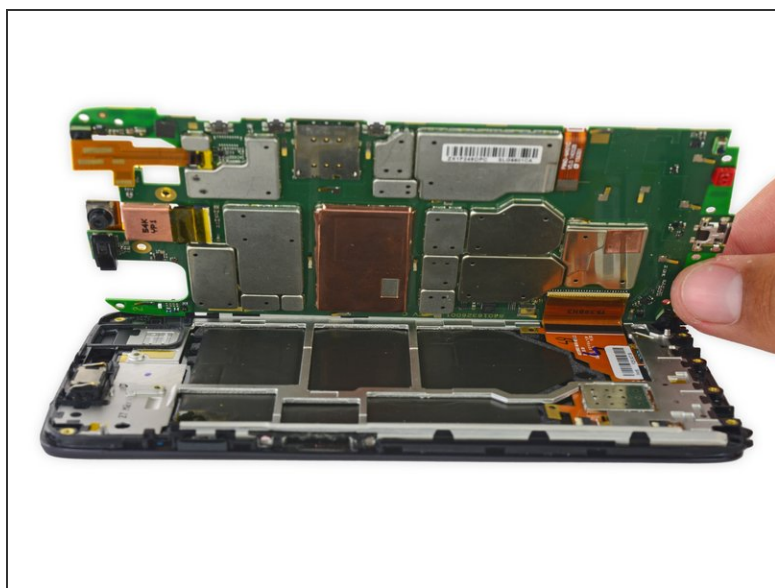
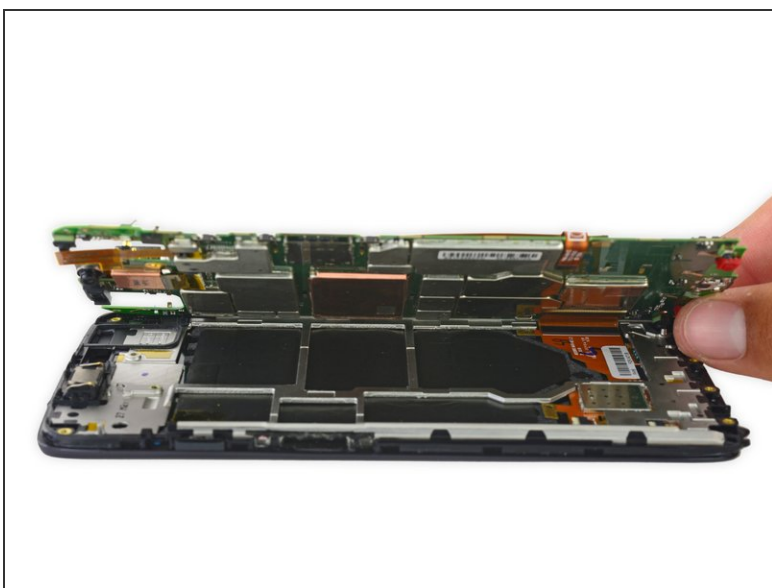
- Remove the lower antenna board.

## Step 11



- Remove the SIM card holder/volume button rocker.

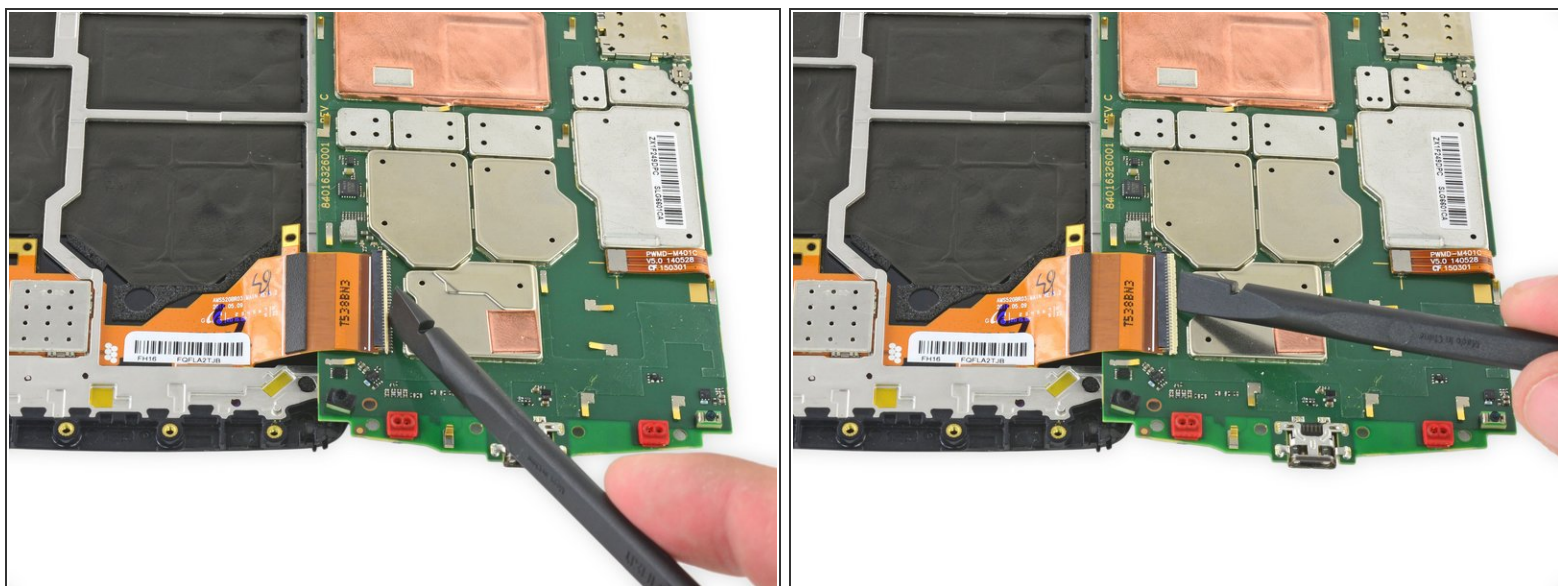
## Step 12



- Carefully lift up the motherboard to expose the display connector.

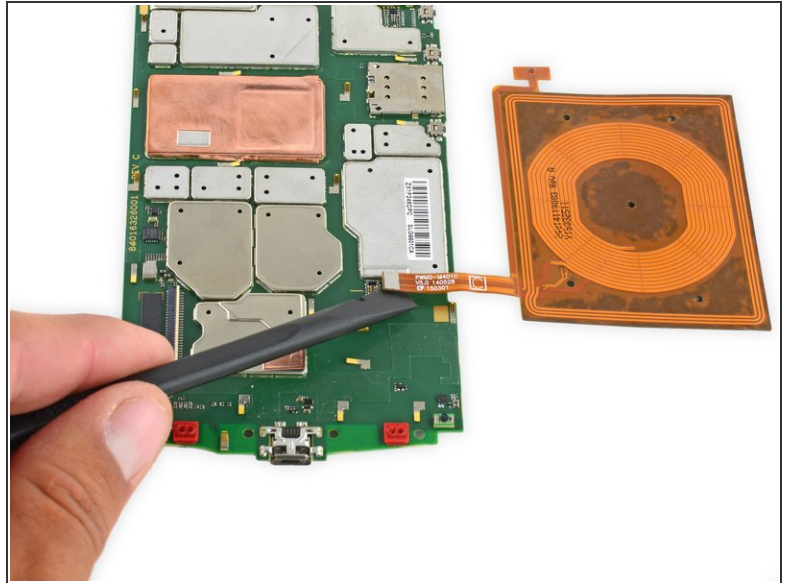
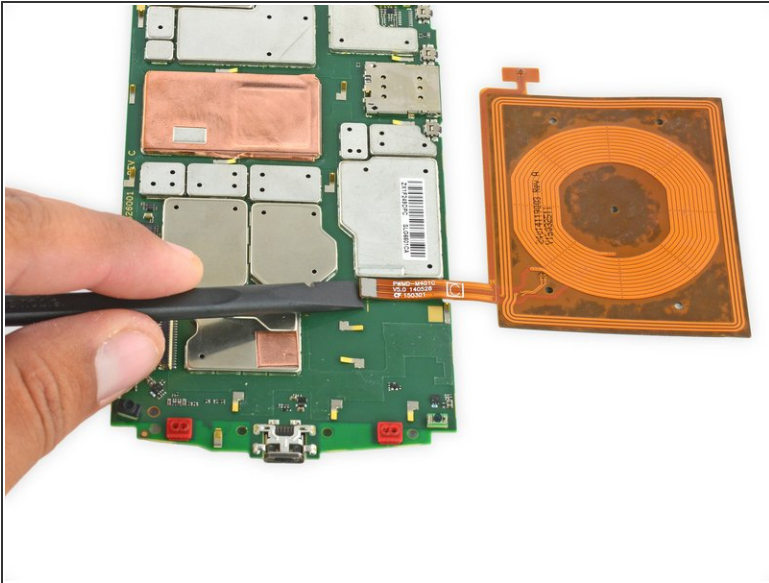


## Step 13



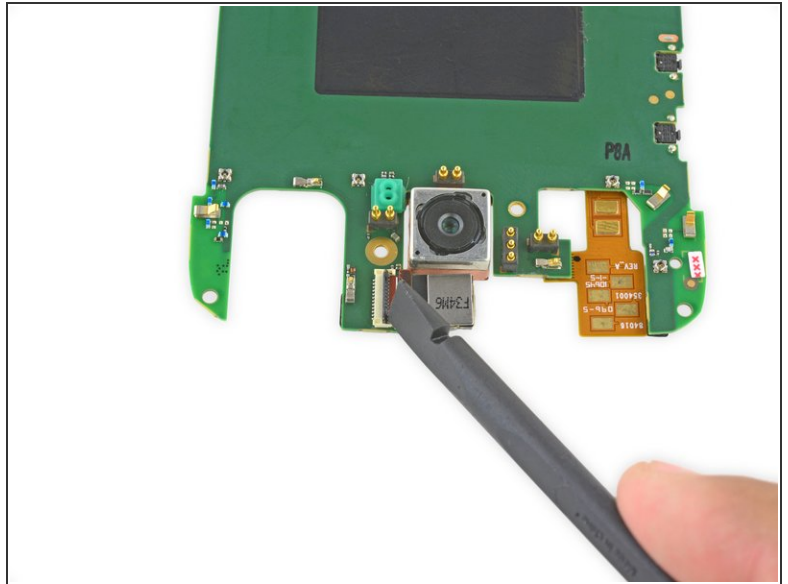
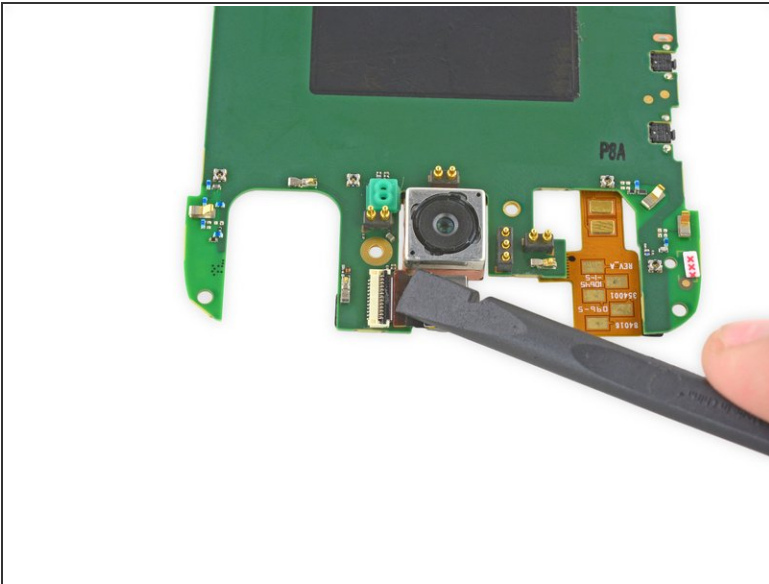
- Use the flat end of a spudger to flip up the retaining flap on the display ZIF connector.
  - Pull the display ribbon cable free of the connector.
- i** At this point, the motherboard has been removed from the phone. The following steps will detail removing the wireless charging coil, as well as both cameras so that they can be transferred to the replacement motherboard.

## Step 14



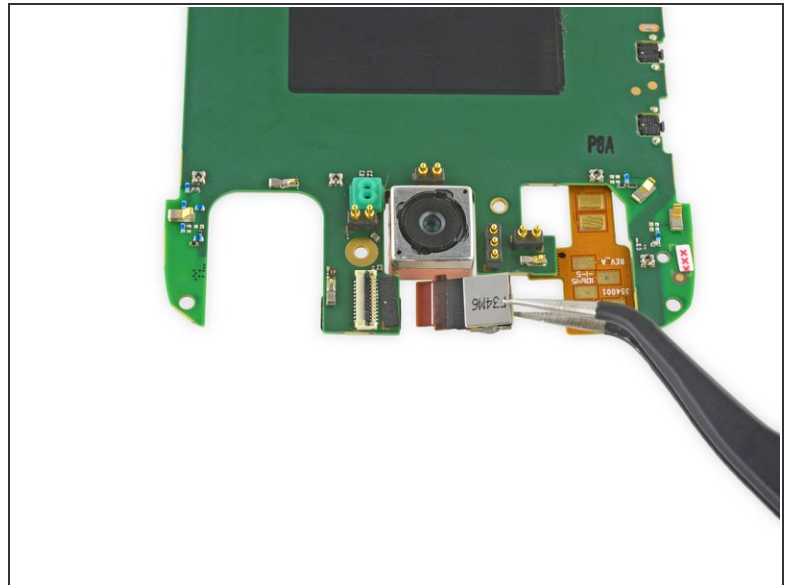
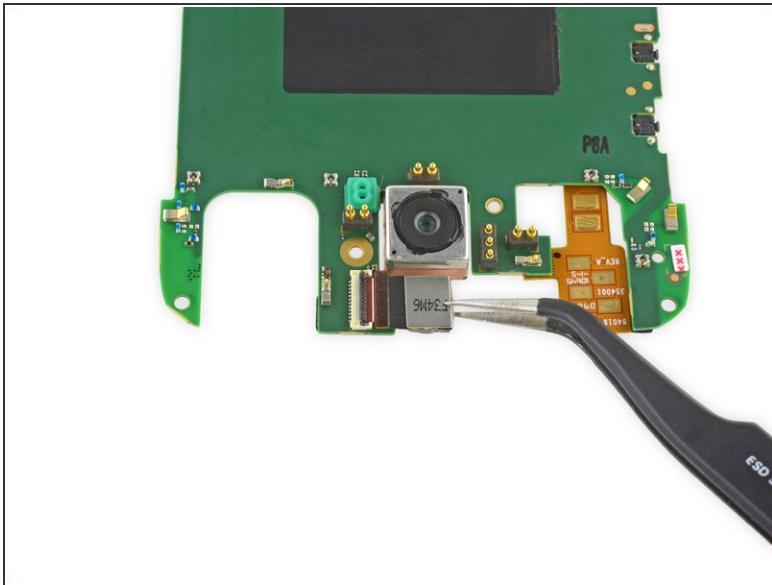
- Use the flat end of a spudger to disconnect the wireless charging coil connector from the motherboard.

## Step 15



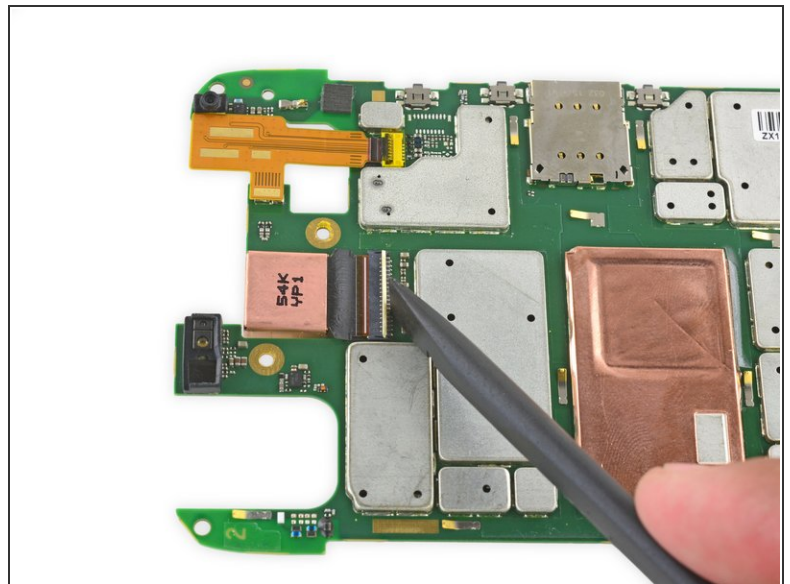
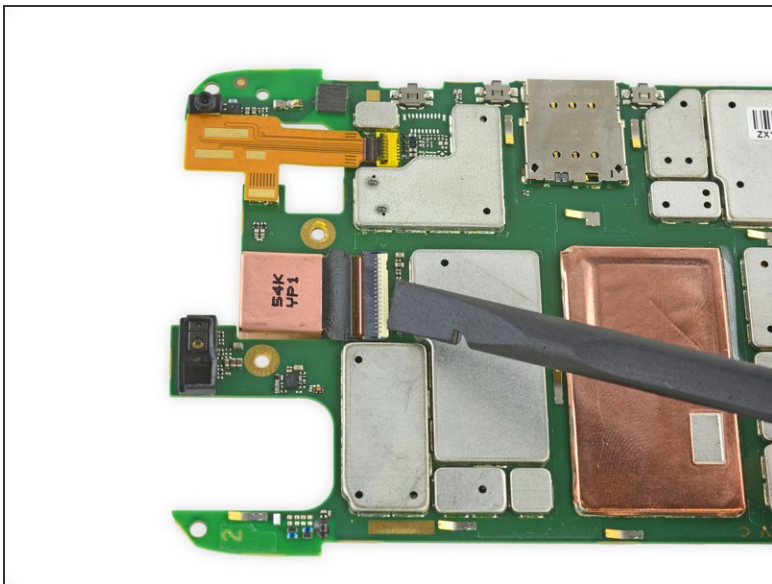
- Use the flat end of a spudger to flip up the black retaining flap on the front-facing camera ZIF connector.

## Step 16



- Remove the front-facing camera.

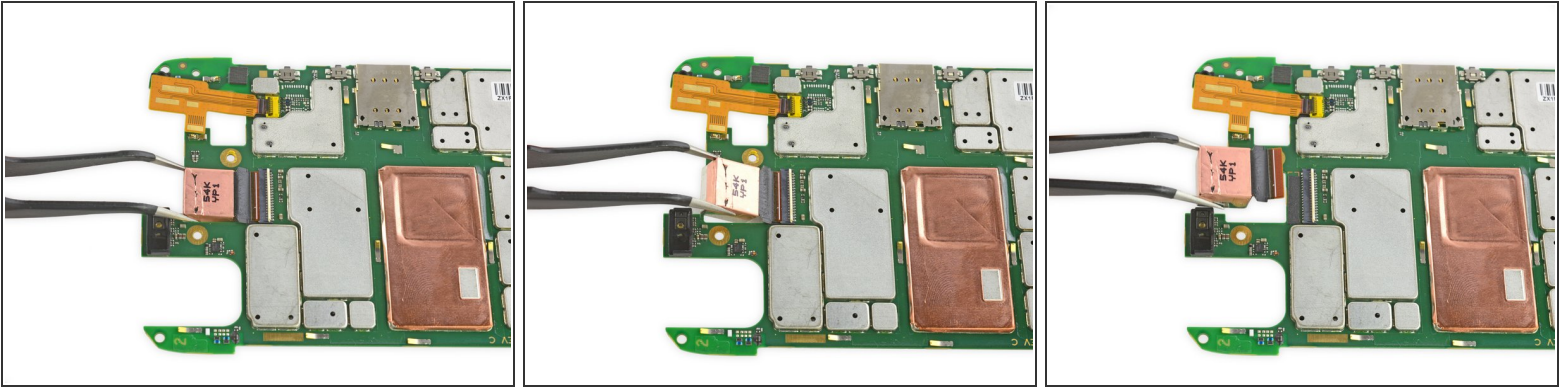
## Step 17



- Use the flat end of a spudger to flip up the tan retaining flap on the rear-facing camera ZIF connector.



## Step 18



- Remove the rear-facing camera.

To reassemble your device, follow these instructions in reverse order.