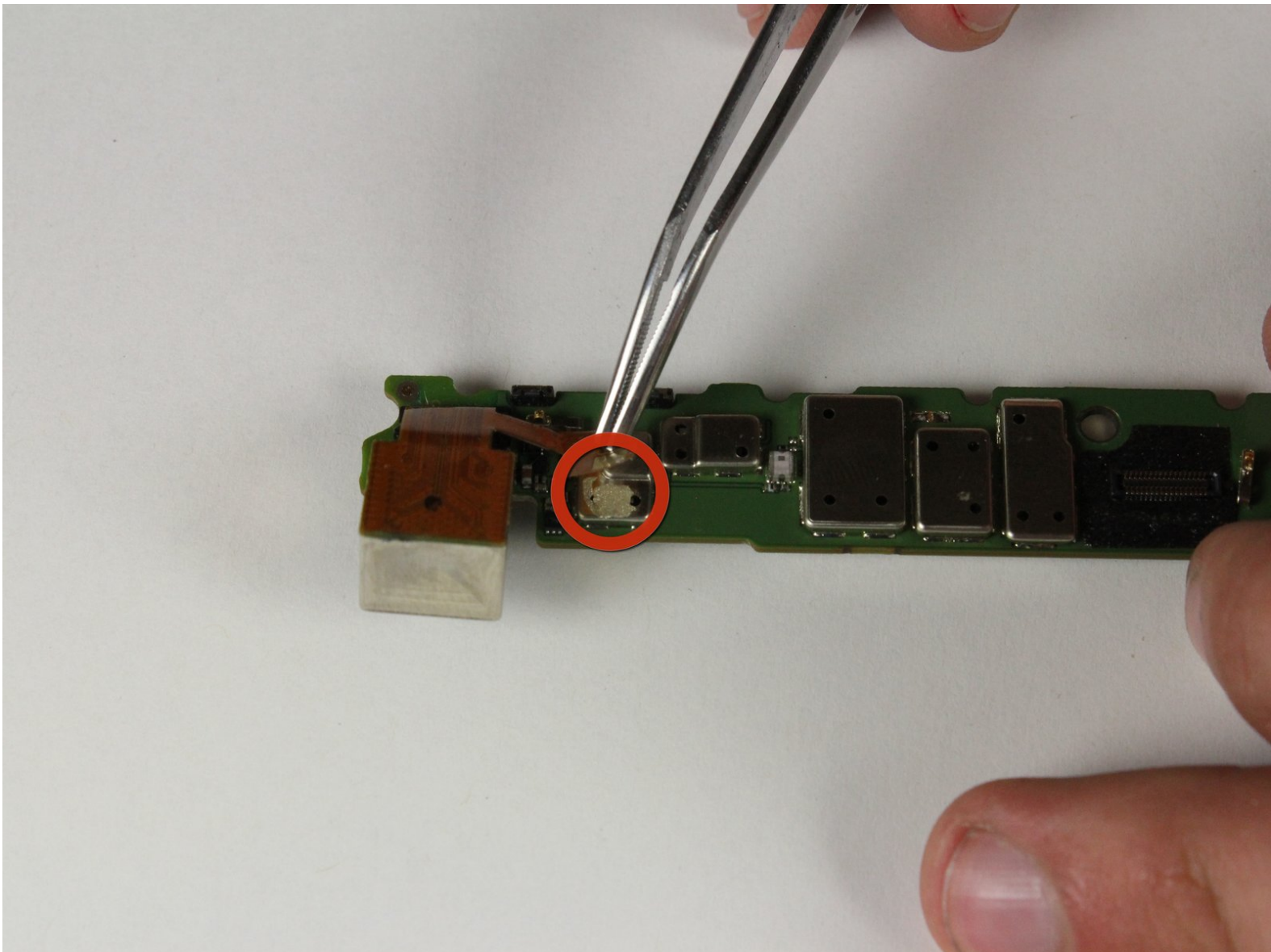




Motorola Droid X Camera Replacement

On occasion a camera will break. Here is a guide showing how to replace it.

Written By: Sam Johnston



INTRODUCTION

This guide will instruct the reader how to install a camera module in a Motorola Droid X. This is a rather invasive tutorial that requires much of the phone to be disassembled to get to the camera module, proceed with caution.



TOOLS:

- [Spudger](#) (1)
- [Tweezers](#) (1)
- [T3 Torx Screwdriver](#) (1)
- [iFixit Opening Tools](#) (1)
- [T5 Torx Screwdriver](#) (1)



PARTS:

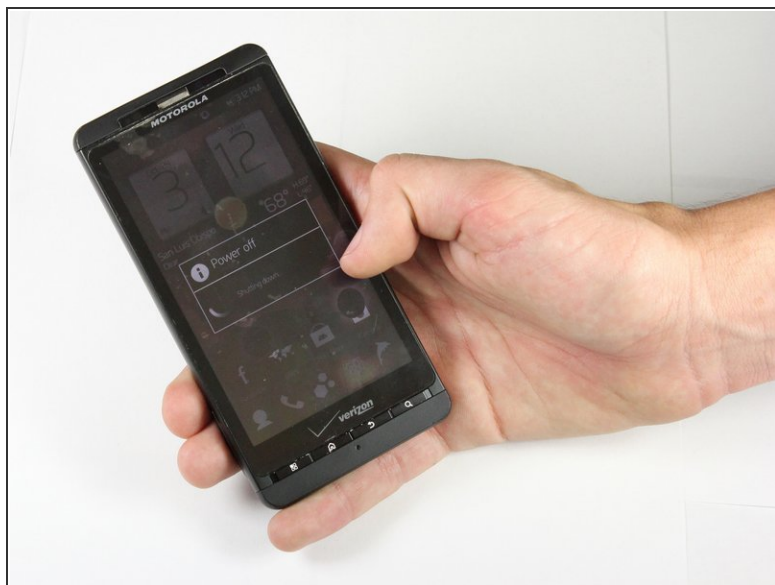
- [Motorola Droid X Camera](#) (1)

Step 1 — Battery



- Locate the power button at the top of the phone. Depress power button for 2 seconds until a menu appears.

Step 2



- Once the menu appears, select the "power off" option. Wait until the phone is completely off.

Step 3



- Place thumb on the back cover, and push down towards the bottom of the device. Once the cover releases, pull it away from the phone and set it aside.

Step 4



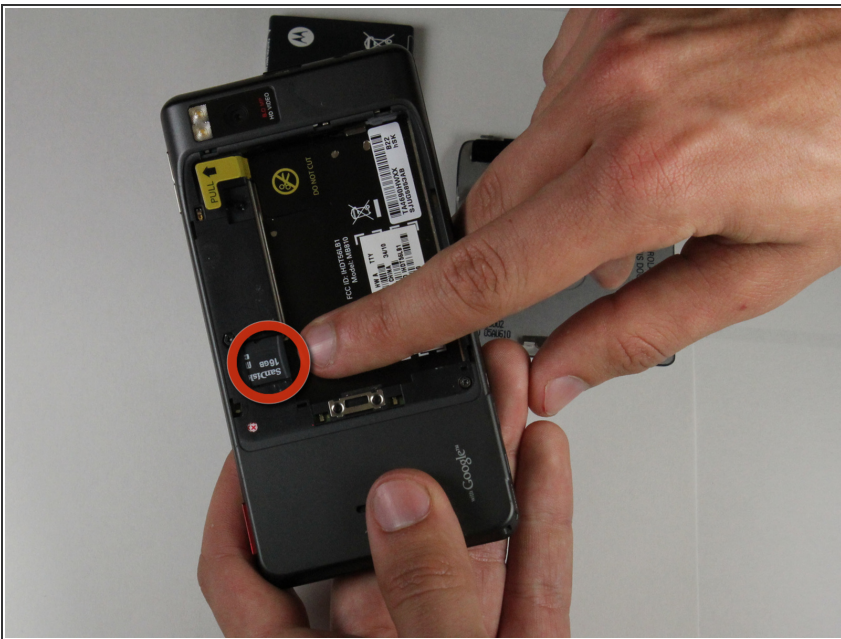
- Find the yellow pull tab located in the upper left corner. Pull the tab until the battery dislodges. Grab the battery by the raised edge, and remove it from the case.

Step 5



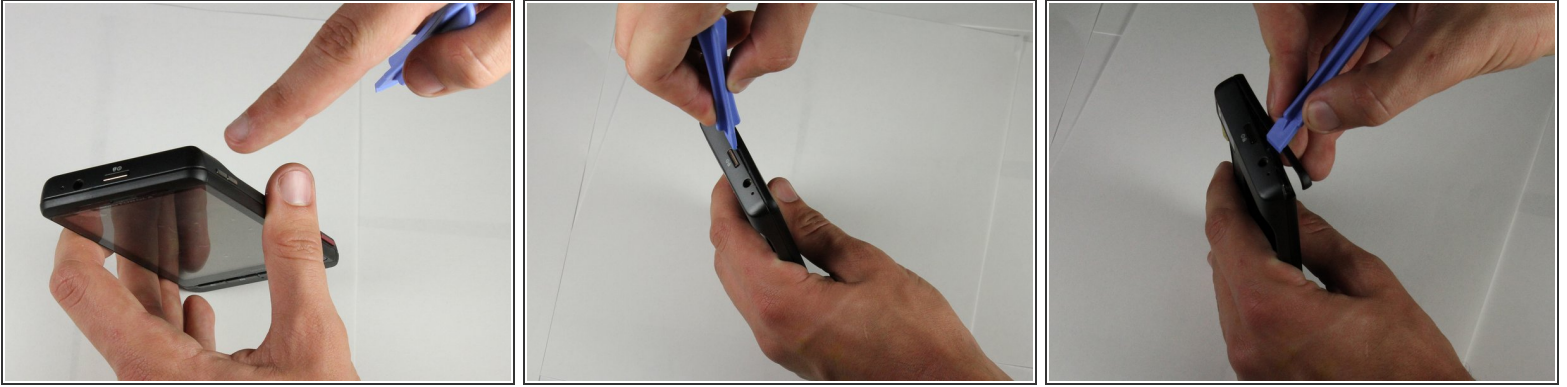
- The battery has been successfully removed.

Step 6 — Motorola Droid X Rear Housing



- Remove the micro SD card from its connector.

Step 7



- Locate the seam between the back case and the end cover on the top edge of the phone.
- Use the plastic opening tool to detach the two clips by wedging the tool into the right side of the seam and moving right to left. Once the cover comes off set it aside

Step 8



- Repeat step 2 on the bottom cover.

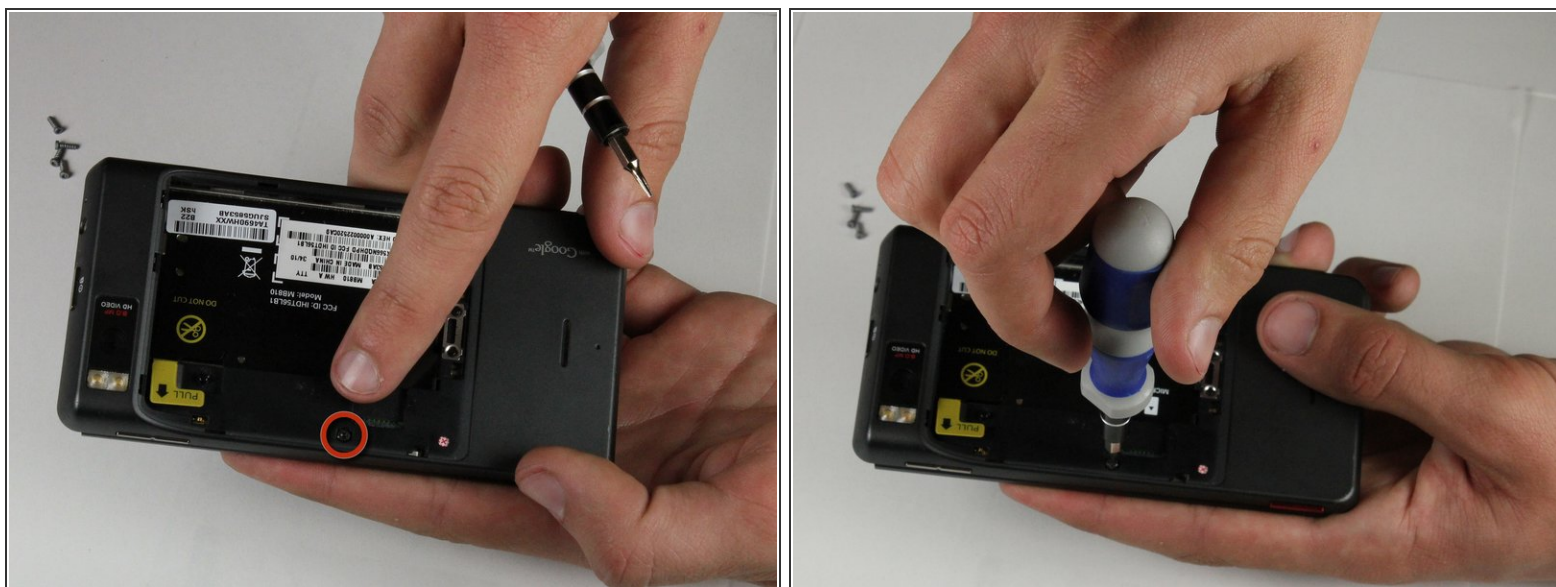
Step 9



- Use a T5 Torx screwdriver to remove the screws in each corner of the phone.

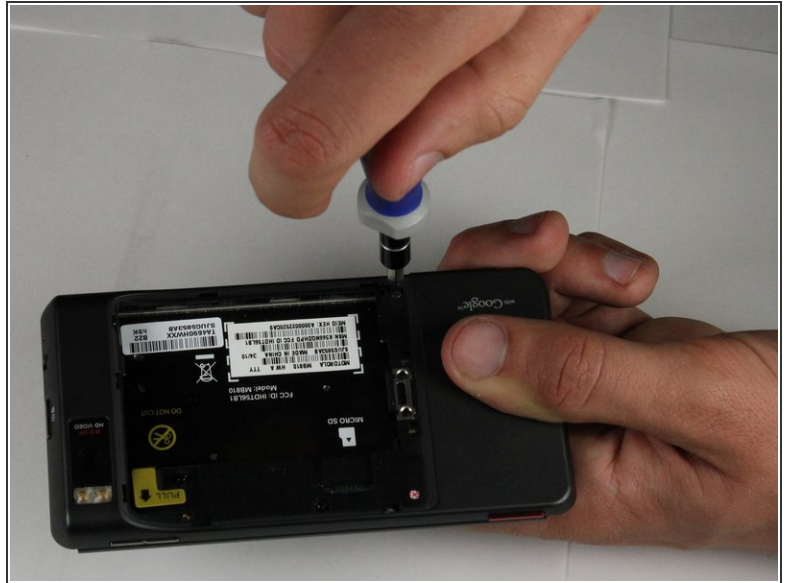
⚠ The screws are very small so make sure not to lose them.

Step 10



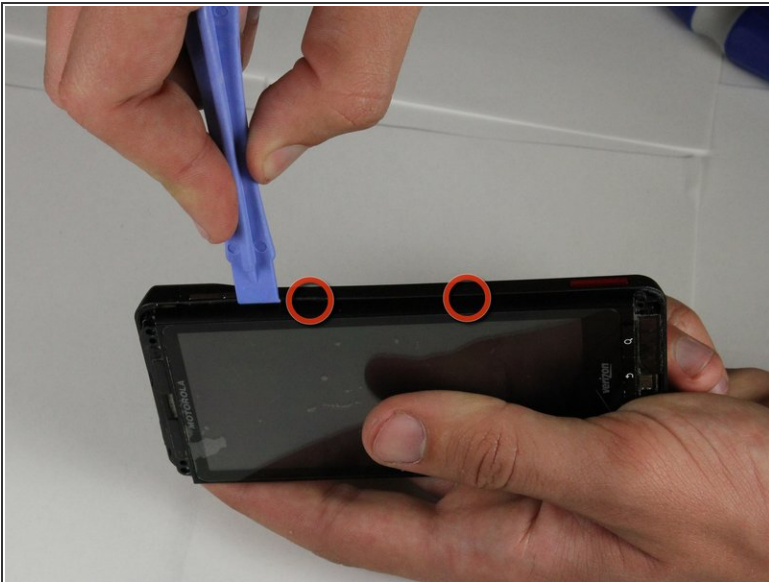
- Flip the phone over and locate the screw on the middle of the left side. Unscrew it using the T5 Torx screwdriver and set it aside.

Step 11



- Identify the screw located in the bottom right corner of the battery case. Remove the screw with a T5 (or in some cases T6) torx screwdriver and set it aside.

Step 12



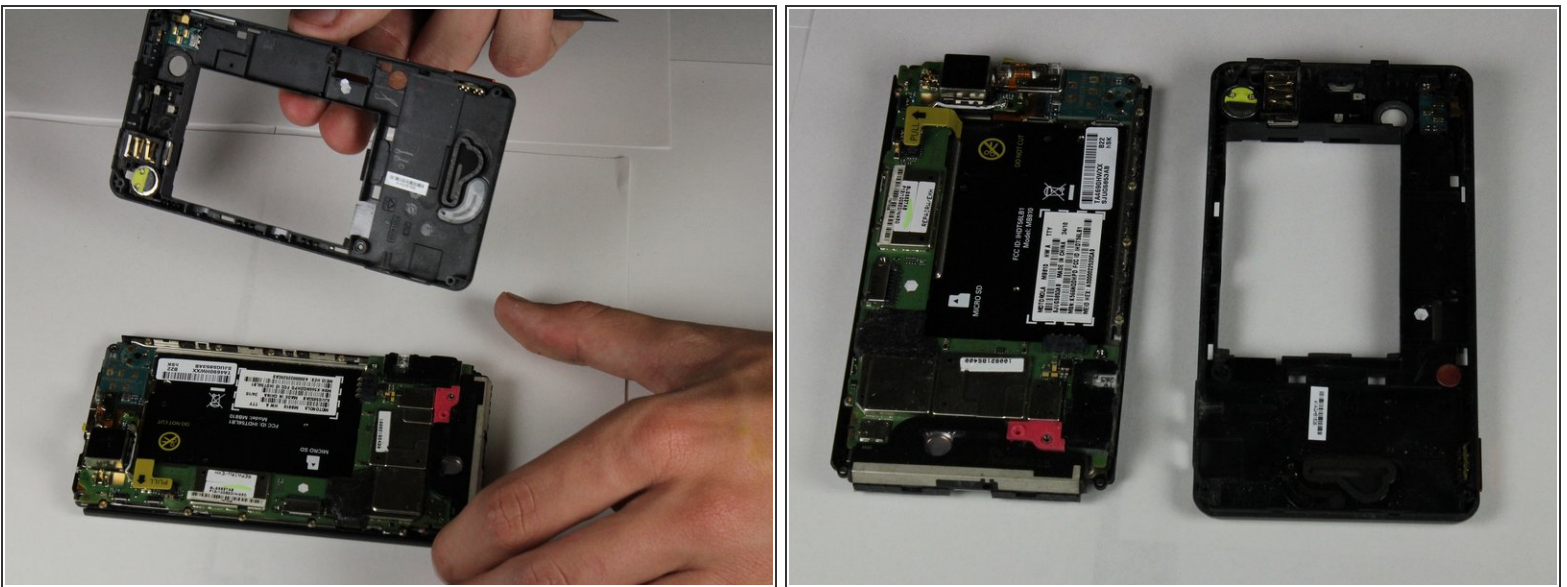
- Locate the seam along the right edge of the phone. Use the prying tool to disconnect the two clips along the edge.

Step 13



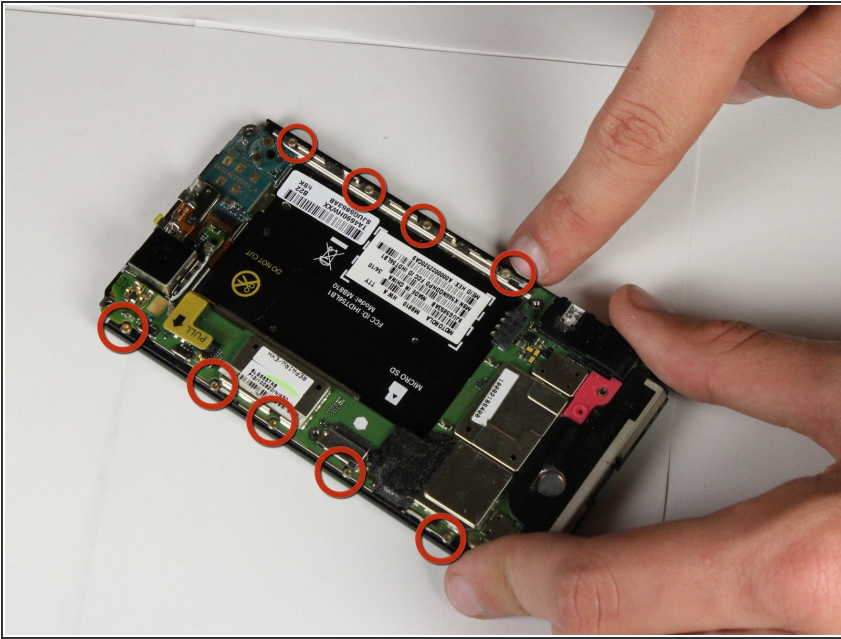
- Locate the two clips on the inside of the case and use the spudger tool to detach them from the case. To detach each clip, use the sharp end to press the small, black plastic in the center of the clip.

Step 14



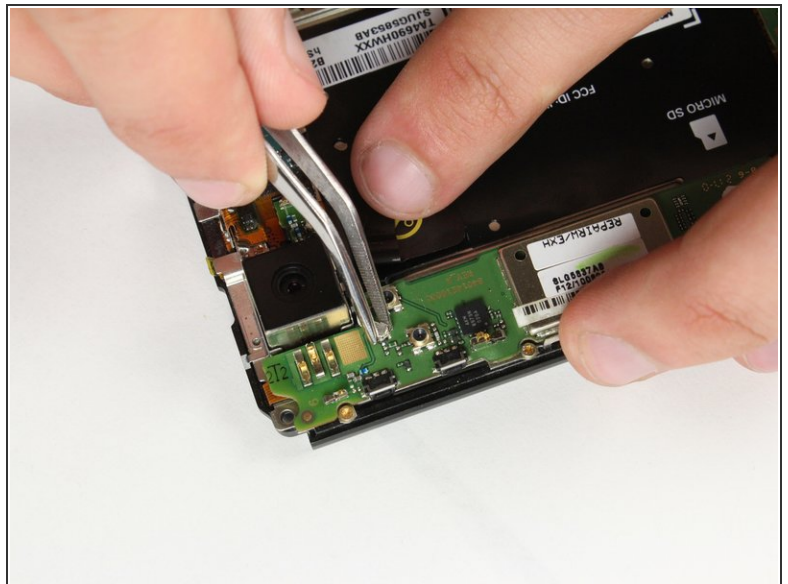
- After the clips are detached, remove the back case and set it aside.

Step 15 — Motherboard



- Remove the screws along both sides of the motherboard using a T3 Torx screwdriver. On some phones this may require a #1 Phillips Screw Driver.

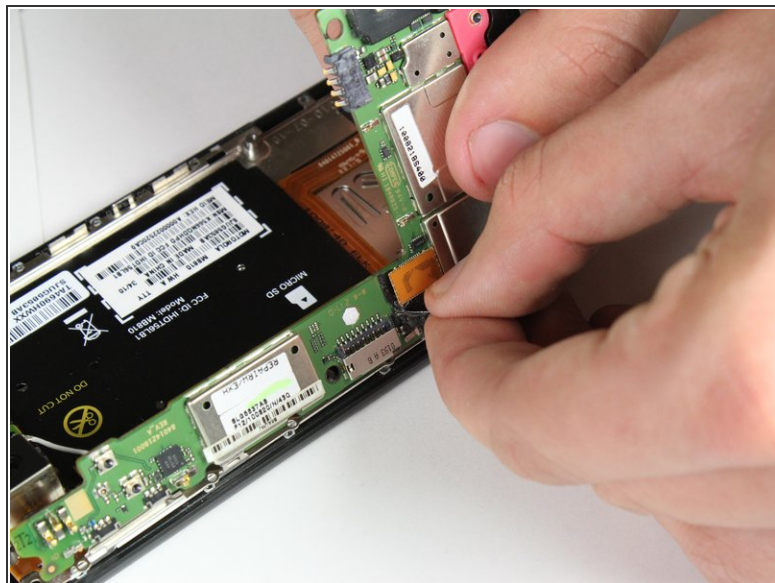
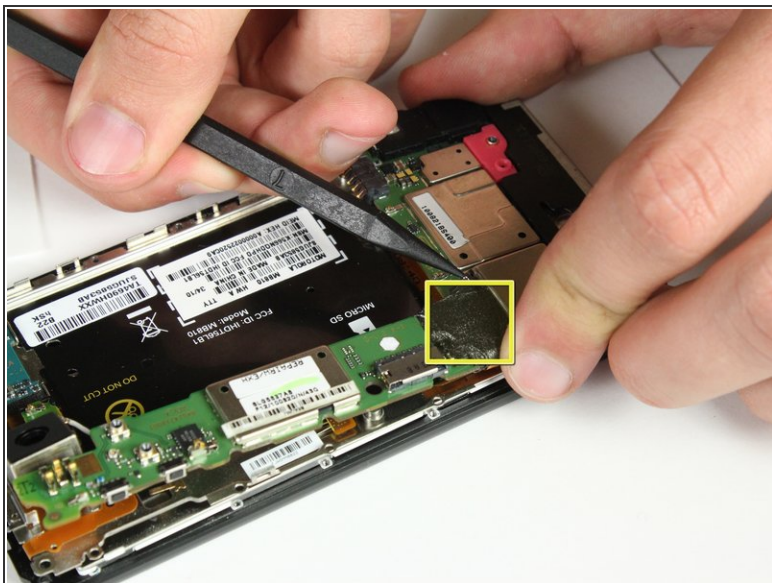
Step 16



- Carefully remove the white connecting wire from the motherboard using tweezers.

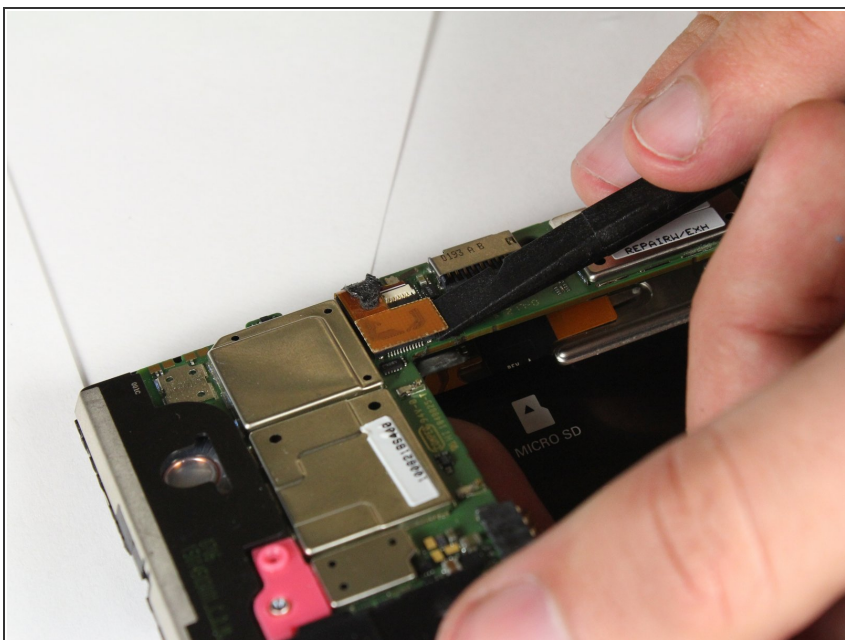
⚠ Use caution, this wire is delicate.

Step 17



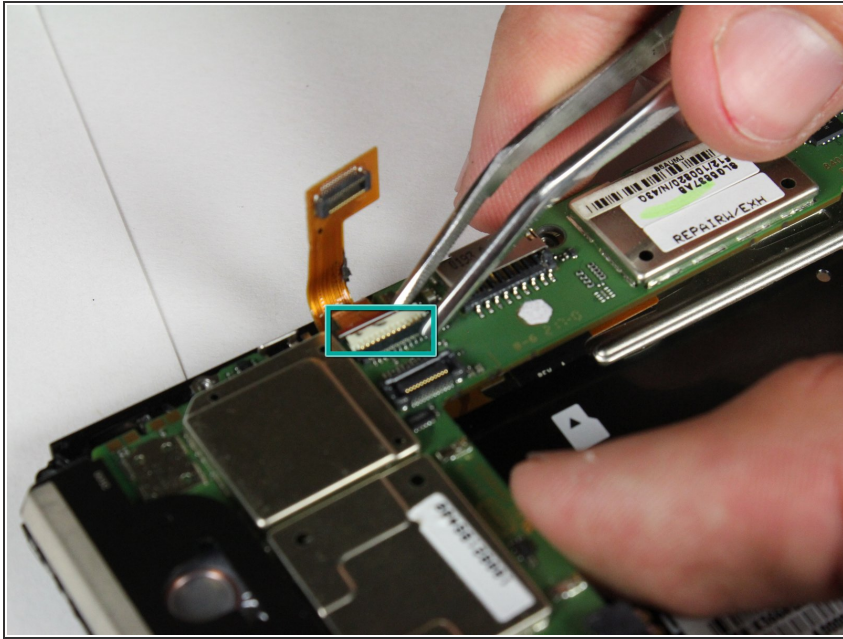
- Scrape away the electrical tape that covers the LCD and digitizer cable using the spudger tool or a fingernail.

Step 18



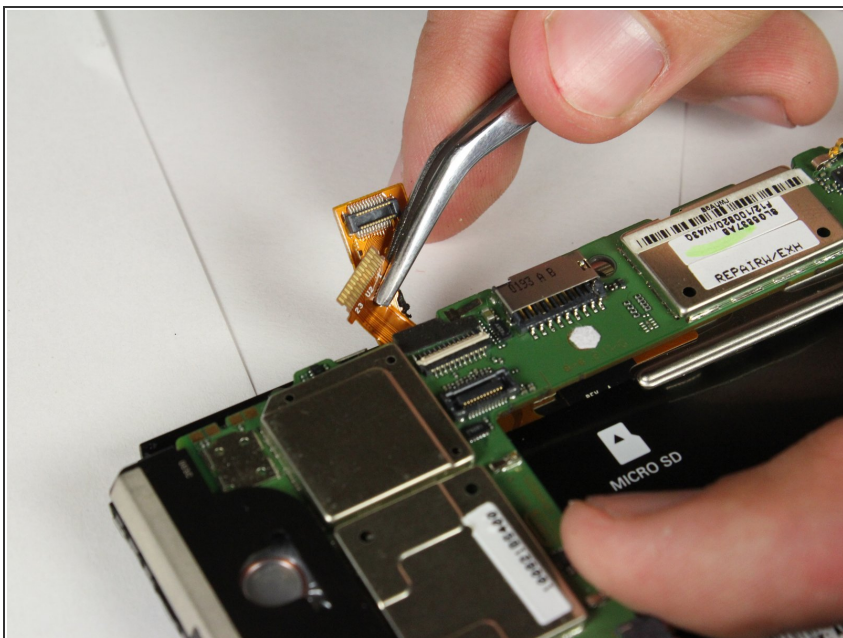
- Use the spudger tool to pop the Digitizer cable off of the motherboard.

Step 19



- Carefully flip the small white connector up and away from the motherboard.

Step 20



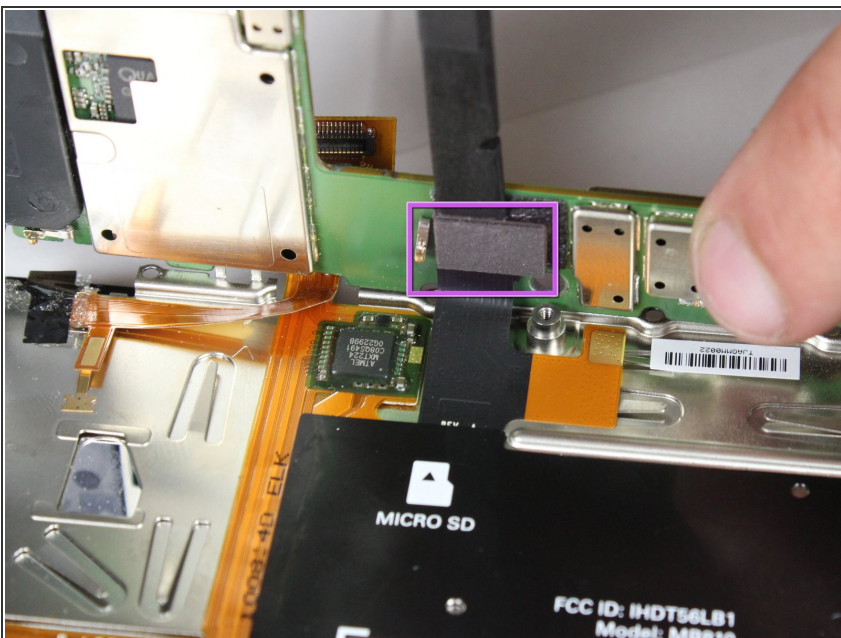
- Gently pull the flat gold cable out from the connector.

Step 21



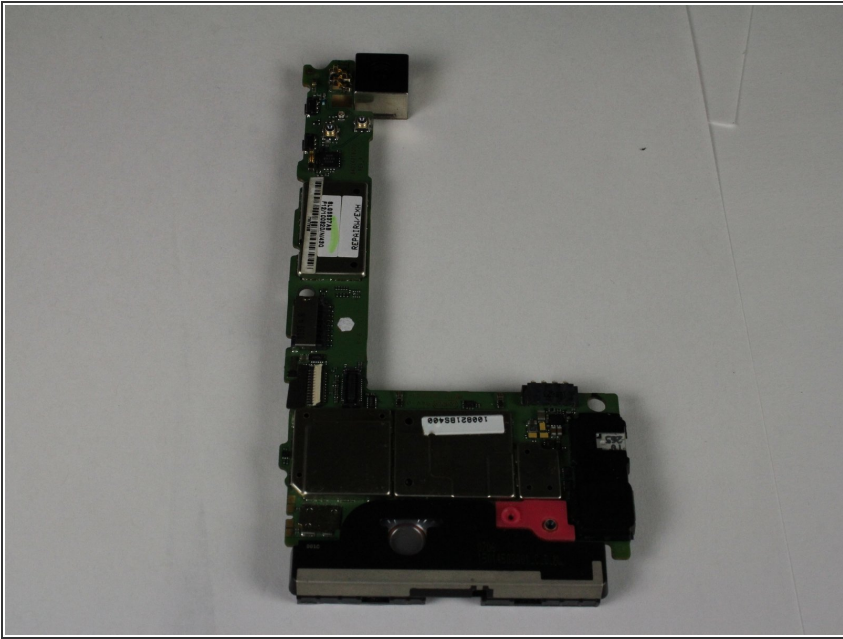
- Carefully lift the motherboard and camera module up. **Do not remove it from the phone!**

Step 22



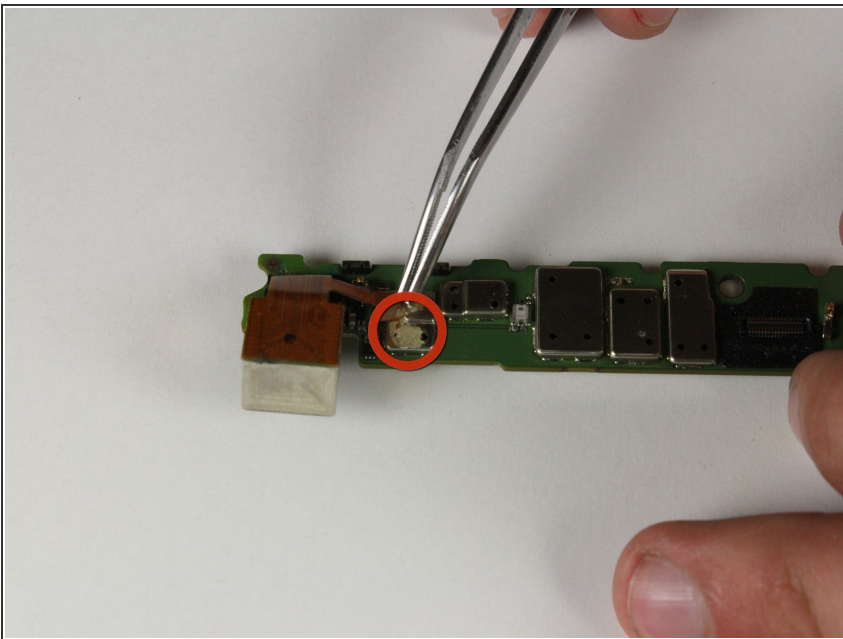
- Using the spudger tool, pop the black cable connector off of the motherboard.

Step 23



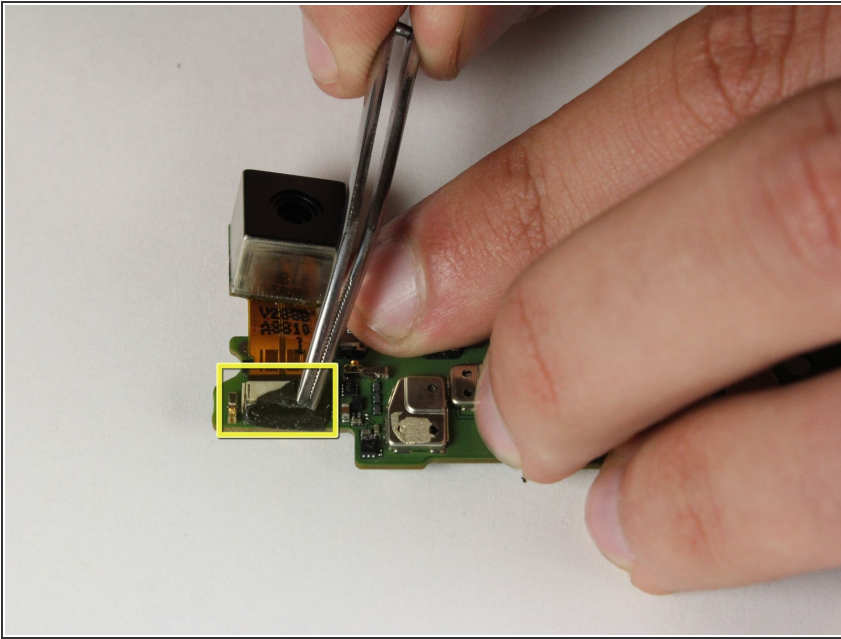
- It is to safe remove the motherboard from the phone.

Step 24 — Camera



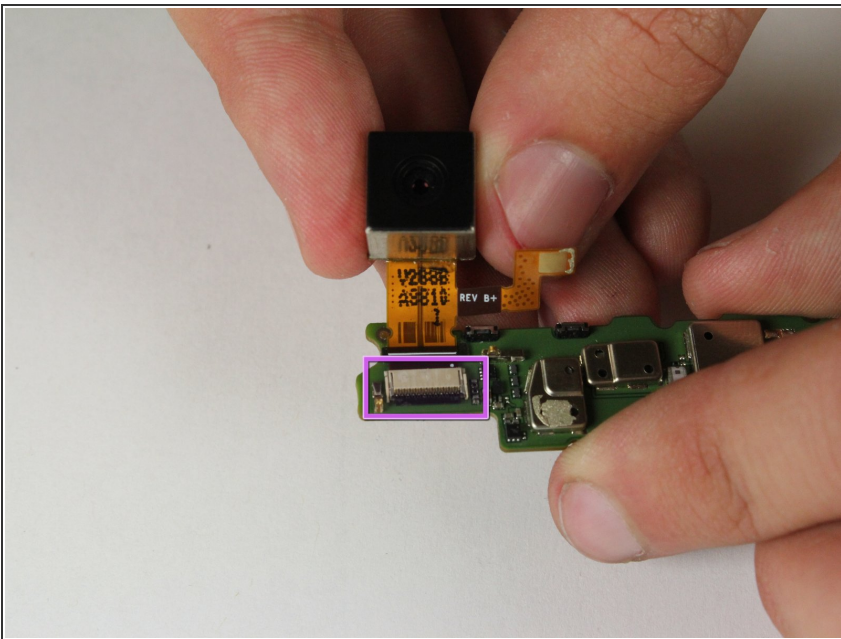
- Gently peel the camera's orange and gold connection cable from the motherboard.

Step 25



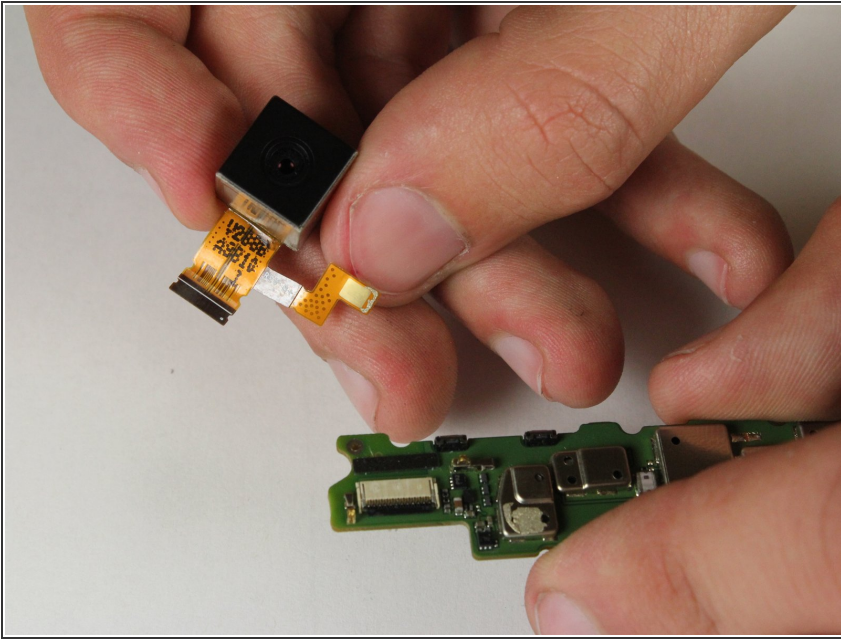
- Remove the black electrical tape covering the camera's connection cable.

Step 26



- Flip up the small white connector. Then gently pull the orange cable out of the connector.

Step 27



- Reconnect the camera module by pushing the black end of the flat cable on the camera module into the white connector on the motherboard.

To reassemble your device, follow these instructions in reverse order.