



# Motorola G2 (G second Generation) Ear piece speaker Replacement

Motorola G2 (G second Generation) Speaker hiss distortion. Speaker Replacement.

Written By: Robin Taylor





## TOOLS:

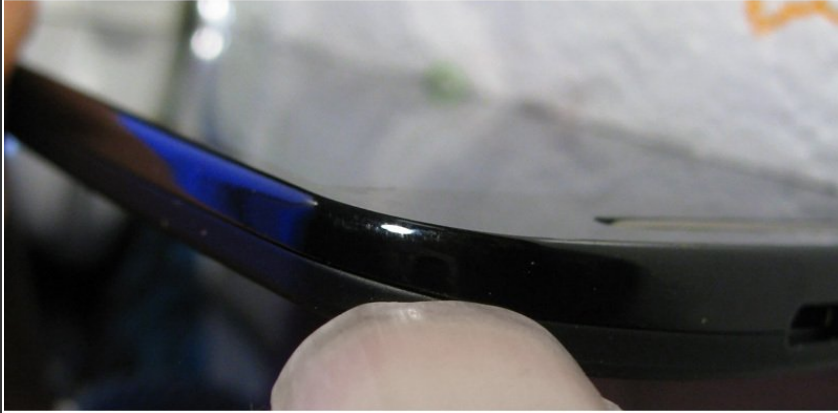
- [T5 Torx Screwdriver](#) (1)



## PARTS:

- [Moto G Second Generation Speaker](#) (1)  
**Motorola Cell Phone Speaker**

## Step 1 — Remove the back cover



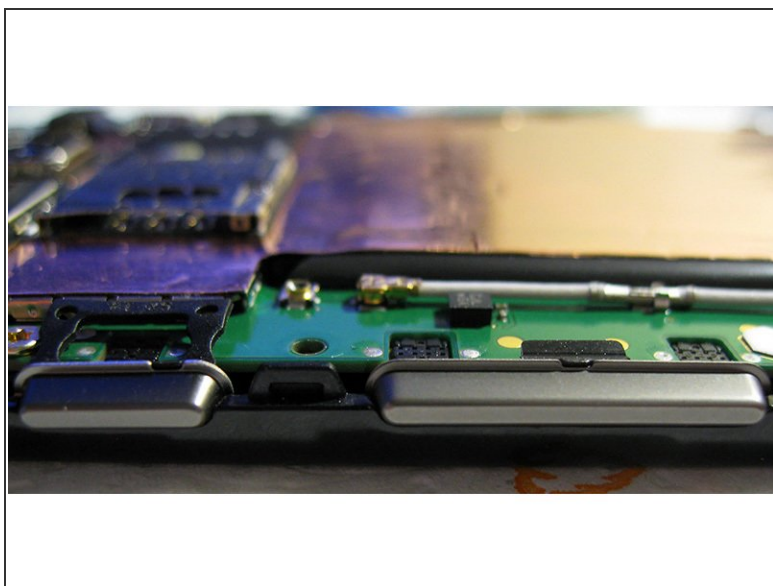
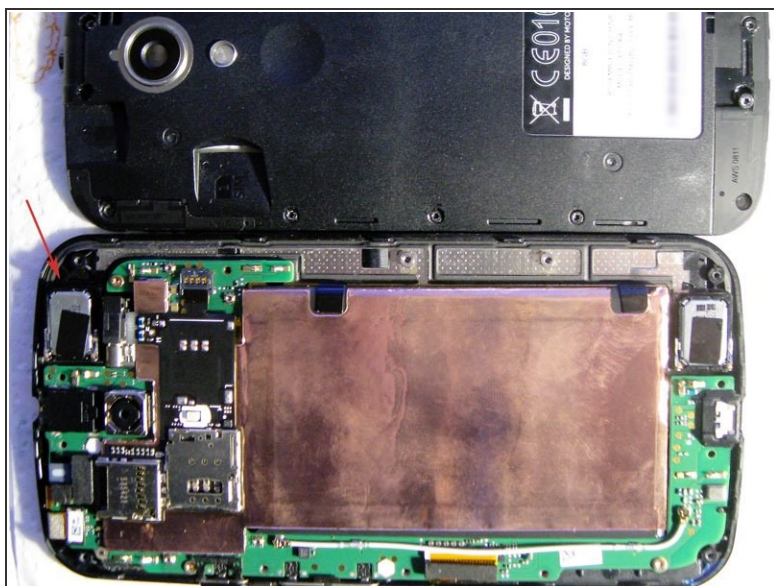
- Remove the phone's back cover A thumb nail or similar will remove it. You will have done this when you inserted a SIM or MicroSD card.

## Step 2 — Remove the T5 torx screws from the back case



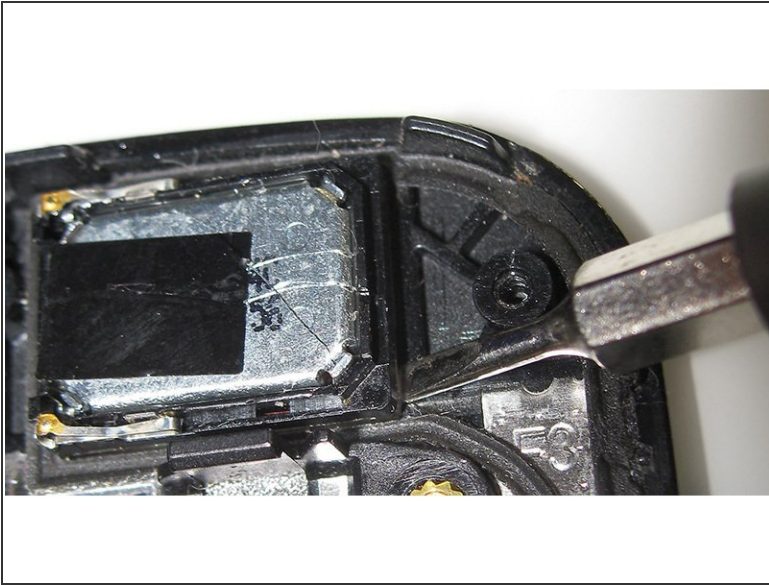
- Remove Your SIM card(s) and MicroSD card (if installed). Put them somewhere safe.
- Remove the screws highlighted using a T5 Torx driver, (A T6 will remover them but will require force and mess up the heads!)

### Step 3 — Remove the back of the case collect up the screws.



- Once the phone is open some screws may remain in the back case. They are small and easily lost! Be sure to collect them up and store them in a container for re-assembly.
- You may also want to put the two buttons away safely as they may drop out.
- Note the speaker, shown with an arrow, can be removed without further disassembly.

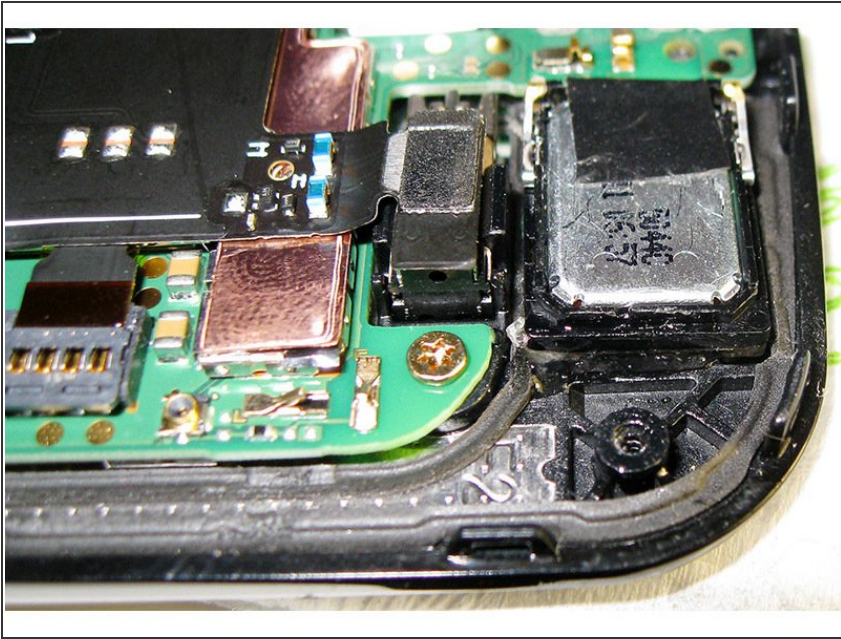
## Step 4 — Remove the old Speaker



- Remove the speaker by **lifting it** using a screwdriver or similar tool. **Note** It is only held in by adhesive tape. Take your time, especially if you are removing a donor speaker from a broken phone. **If you push in**, as the speaker lifts the tool will slide under the speaker damaging its surface!
- The second image shows the front of the good replacement speaker I used.
- Note: Both speakers in the phone are identical. If you mess up removing a donor speaker you get a second chance!

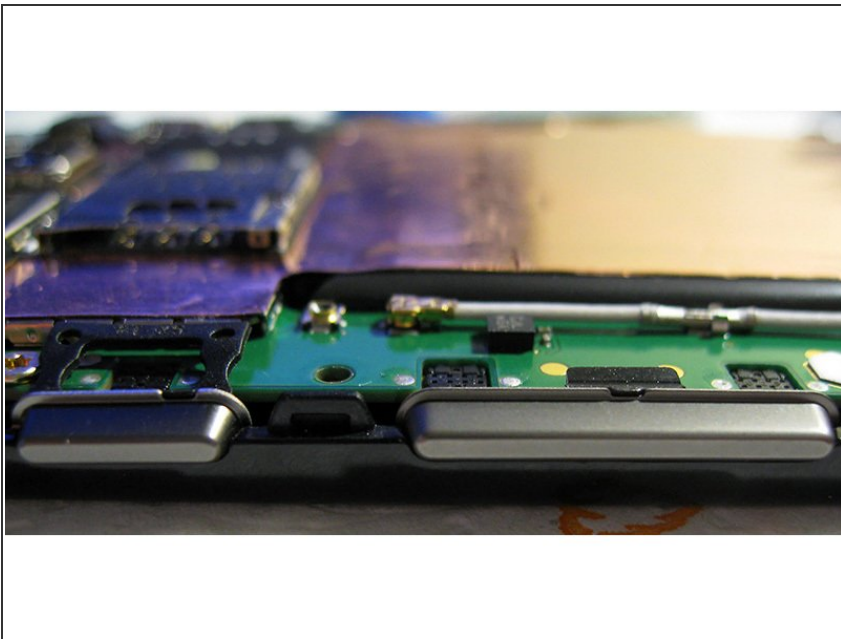


## Step 5 — Replace the Speaker



- If you are using a used donor part the adhesive tape will probably be damaged. I put the speaker in place, applied a thin strip of two part epoxy resin along its right edge. You can use silicone sealant or any other adhesive you deem safe.
- My speaker will be more difficult to remove than if I had used silicone sealant which is flexible strong but can be cut easily. It is also more messy....

## Step 6 — Reassemble and Test.



- Your finished! Reassemble, note the side buttons fit in the case as show.

To reassemble your device, follow these instructions in reverse order.