



# Motorola Krzr K1m Flex Cable Replacement

Written By: Jennifer Hudiono



---

## INTRODUCTION

This guide is a step by step process that allows you to replace your old or damaged flex cable with a new one.

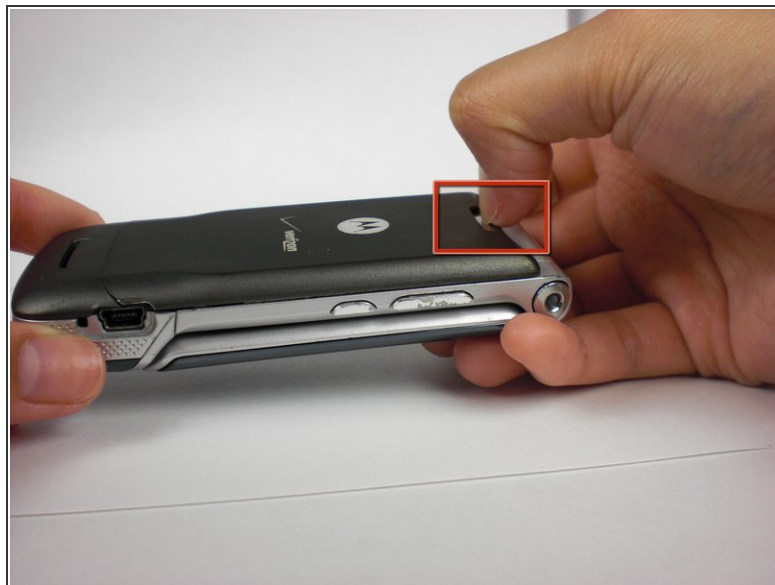
---



### TOOLS:

- [Flathead 3/32" or 2.5 mm Screwdriver](#) (1)
  - [Spudger](#) (1)
  - [T5 Torx Screwdriver](#) (1)
  - [Tweezers](#) (1)
-

## Step 1 — Battery



- Push down on the silver tab located at the top center of the back of the Motorola K1m cellphone.

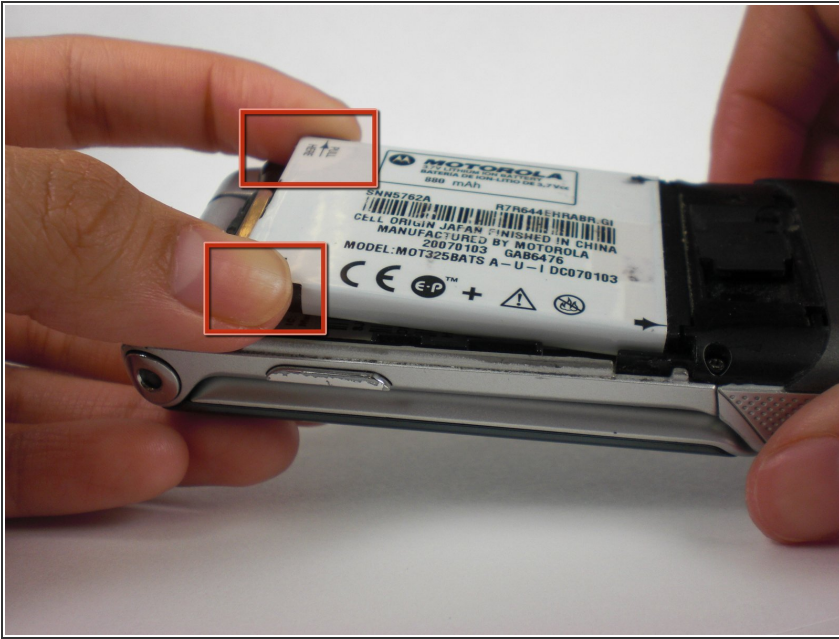
## Step 2



- While pushing down on the silver tab, slide the back cover towards the silver tab.
- Remove the back cover.

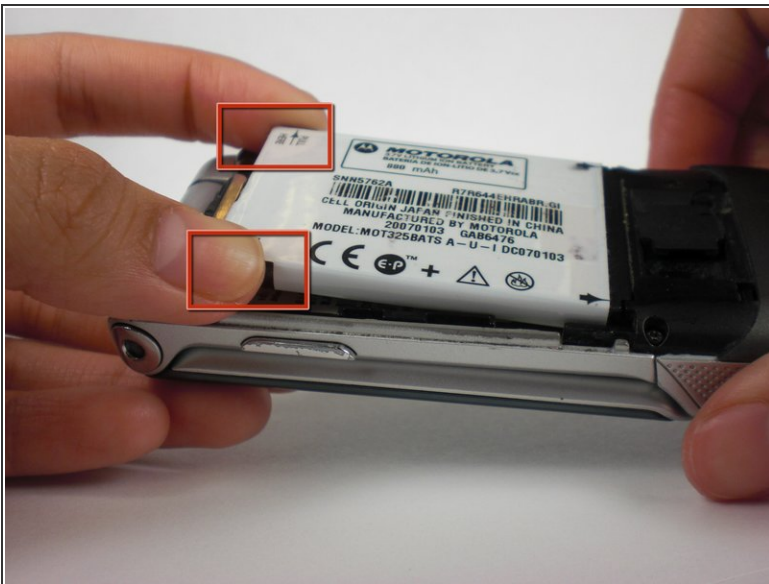


## Step 3



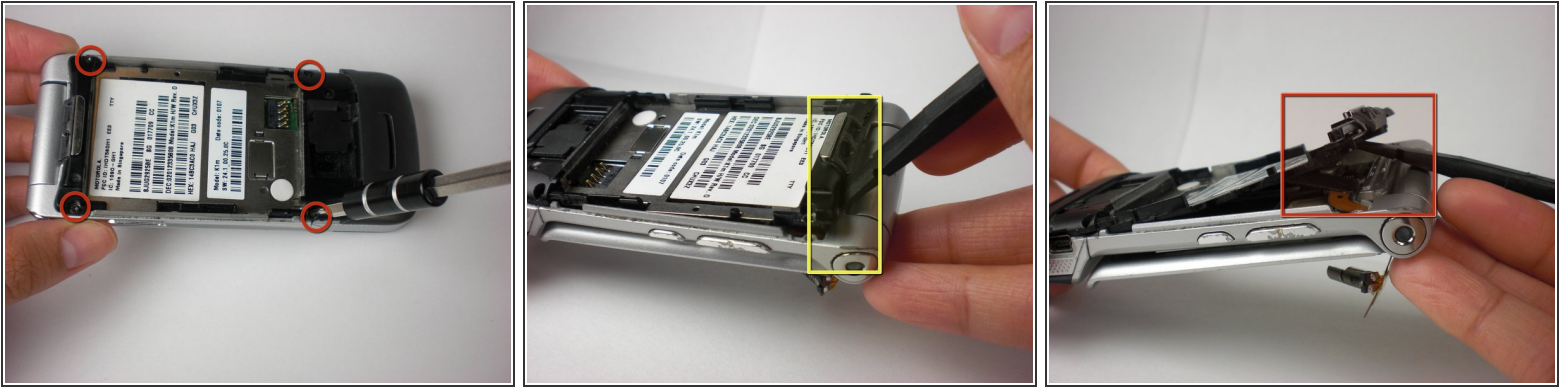
- Remove the battery by pulling the battery from the top corners labeled "Pull Here" located on either side of the top of the battery.
- Replace the old battery with the new battery.
- Follow all of the steps to remove the battery in reverse order to reassemble.

## Step 4 — Keypad



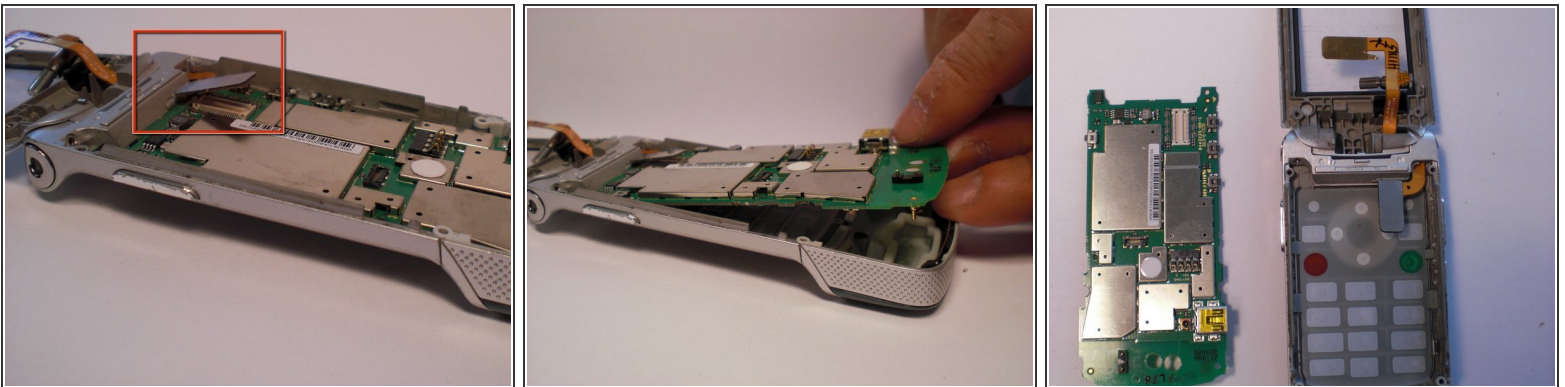
- Remove the battery with your fingers by pulling the battery from the top corners labeled "Pull Here" located on the left and right side of the top of the battery.
- Remove the battery.

## Step 5



- To begin detaching the battery dock, unscrew the 4 black screws on each corner of the phone with the T5 Torx Screwdriver.
- Lift up the battery dock where the hinges are located. Carefully insert the T5 Torx Screwdriver in between the battery dock and the back plate of the battery. (See the picture to locate the hinges)
- Remove the battery dock by popping it up with [The Spudger](#).

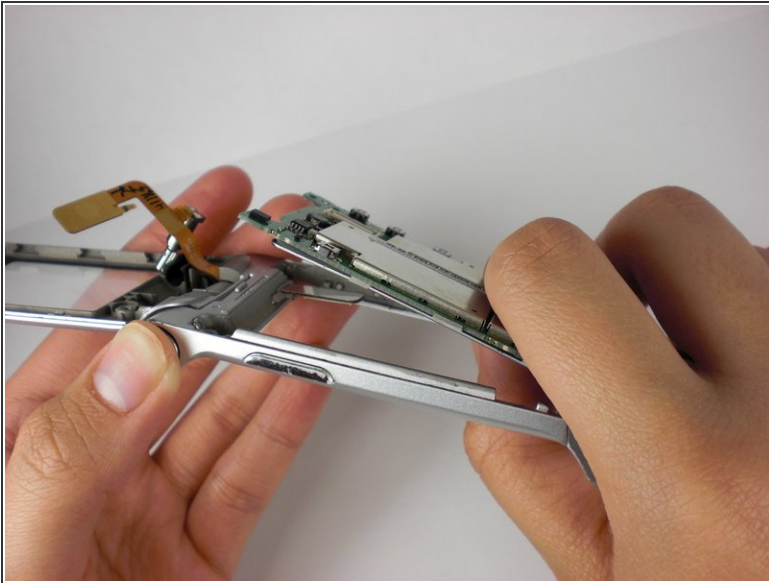
## Step 6



- To remove the chip board, first unplug the flex cable from the logic board with tweezers.
- Lift up the logic board from the bottom flip with your fingers.
- Remove the logic board.

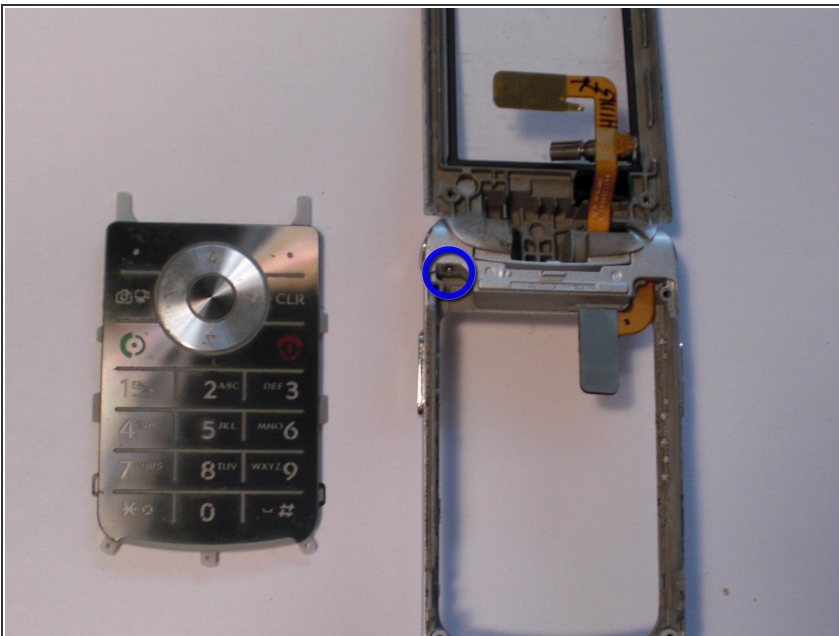


## Step 7



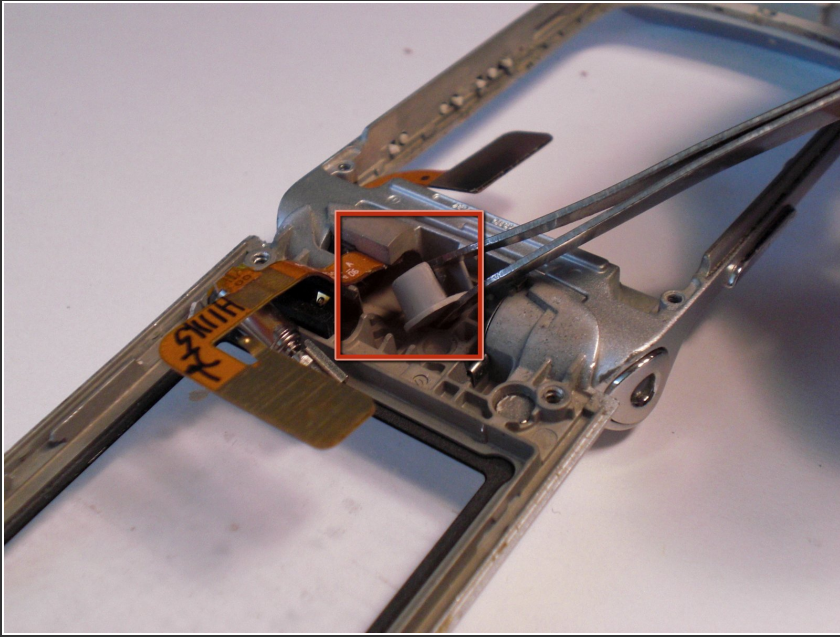
- Gently pop off the keypad with your fingers.
- Once the keypad is removed, follow all of the steps in reverse order to replace the old keypad with the new keypad.

## Step 8 — Flex Cable



- Remove the small silver screw located where the top of the back of the phone.

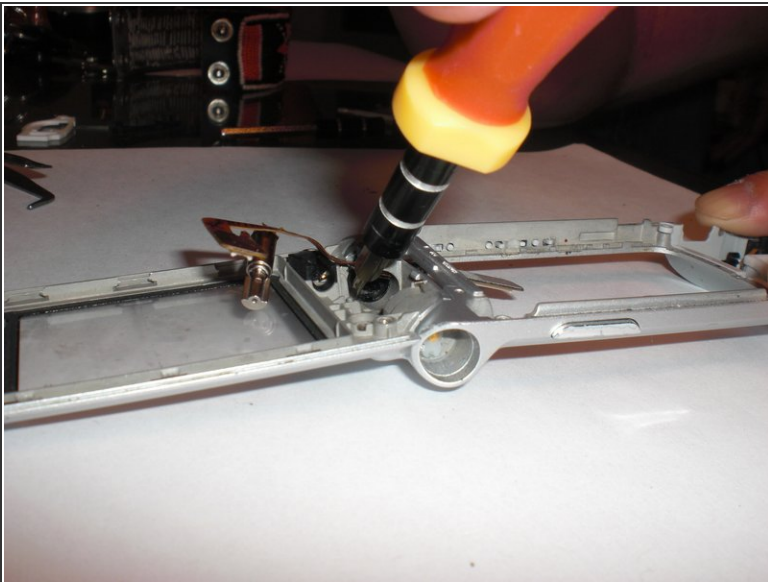
## Step 9



- Then take out the small grey plastic cap indicated in the picture.

⚠ do not lose the cap!

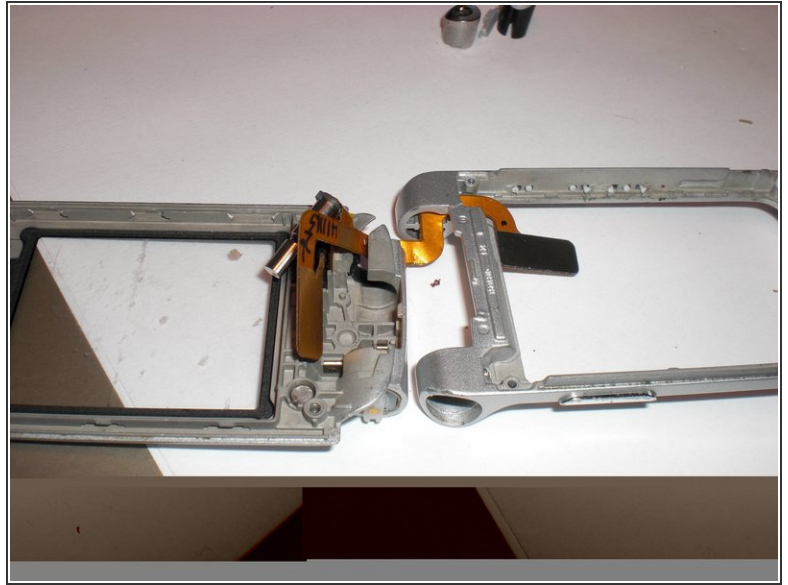
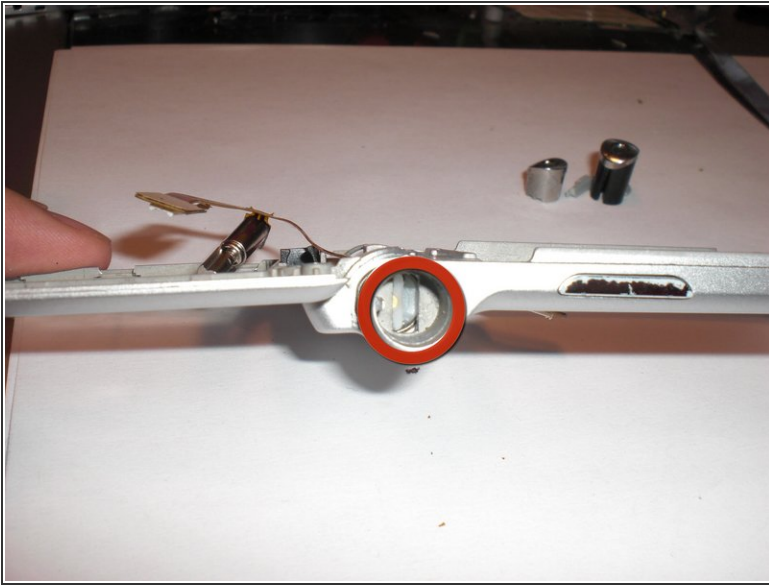
## Step 10



- Next, turn the frame on it's side and gently tap it till the hinge cover that was screwed in falls out.

⚠ Then use your flathead to push here. Be careful! Apply a little force but not too much or else the left hinge cover you're pushing out here may shoot out and get lost.

## Step 11



- Push in the white thing in the middle, it's spring-loaded, and pull the frame halves apart.

⚠ DO NOT LOSE THE BLACK HINGE RING. you need it.



## Step 12



- Then slide out the flex cable.
- Slide in the new flex cable the same way you took it out.
- And congratulations you are done!

To reassemble your device, follow these instructions in reverse order.