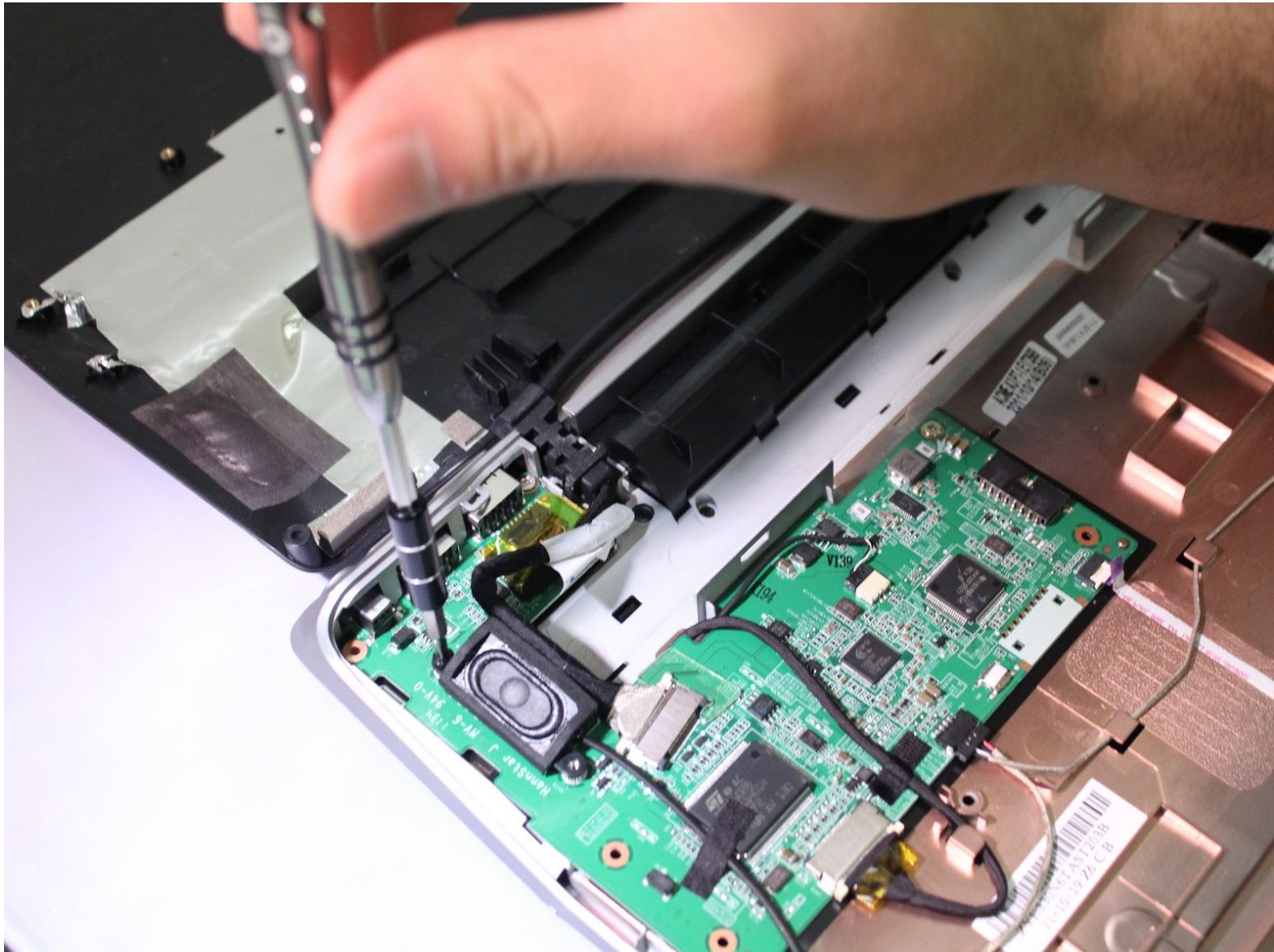




Motorola Lapdock 100 Motherboard Replacement

A guide to replace the lapdock motherboard.

Written By: Anthony Aiumu



INTRODUCTION

To start, you will need to remove the bottom case of the lapdock. Then you will need to unscrew the left speaker of the lapdock in order to unfasten the motherboard in later steps. Then there will be two screws that you will need to remove in order to free the motherboard from the lapdock. Be sure that all connections to the lapdock components are unplugged before removing the motherboard.



TOOLS:

- [Metal Spudger](#) (1)
 - [Phillips #00 Screwdriver](#) (1)
 - [iFixit Opening Tools](#) (1)
 - [Tweezers](#) (1)
-

Step 1 — Lower Case



- To take off the Keyboard there are three tabs at the top of the Keyboard in the locations shown in the picture that you must press and unclip. They are located behind each of the keys that are removed.
- ⚠ You do not need to remove any keys to unclip the keyboard. We did this for picture purposes only.

Step 2



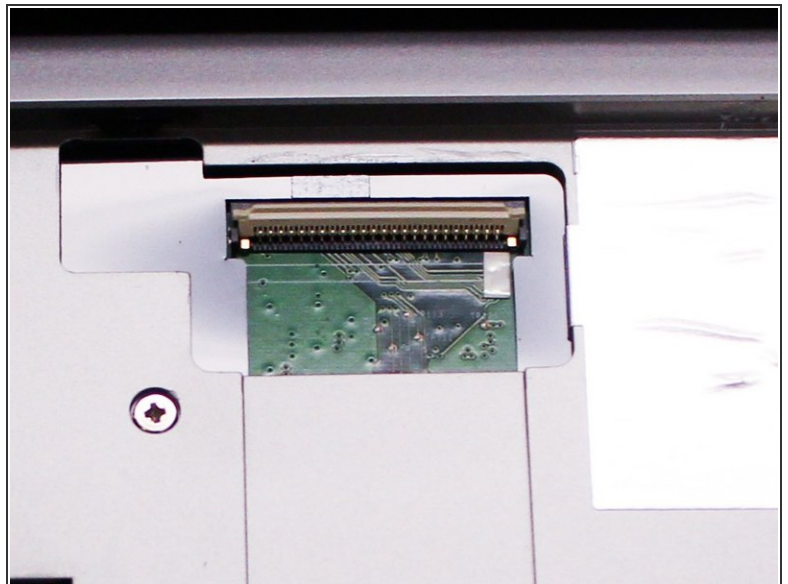
- You can use a small metal spudger to depress each tab to avoid scratching the keyboard.

Step 3



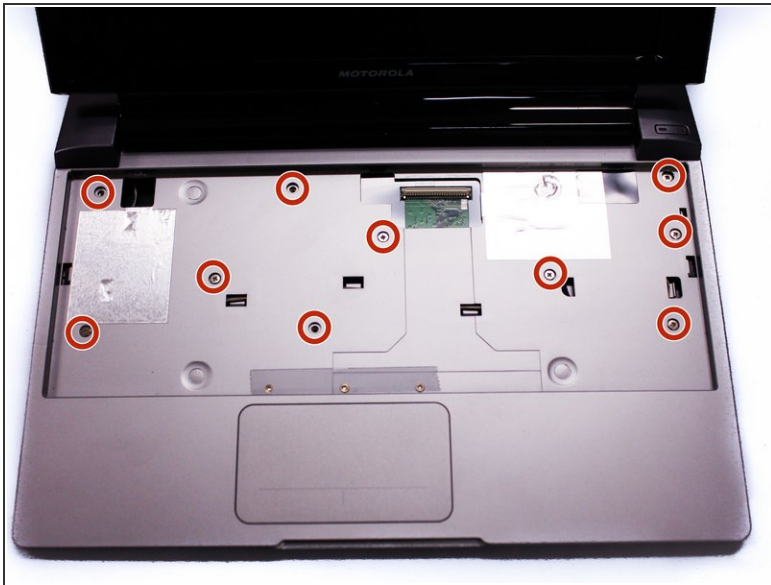
- Lift up keyboard so that you are able to see the ribbon cable connected to the contact.

Step 4



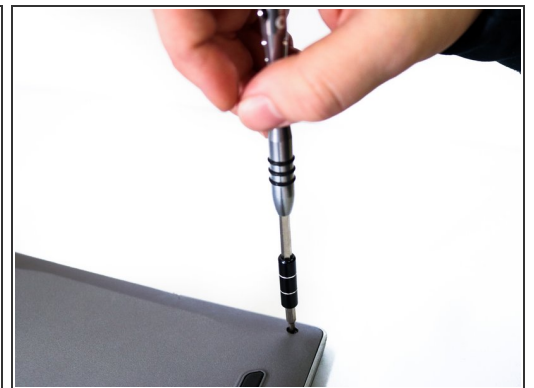
- Flip up the ZIF connector holding the ribbon cable on the contact as shown in the two pictures and then gently disconnect the ribbon cable.

Step 5



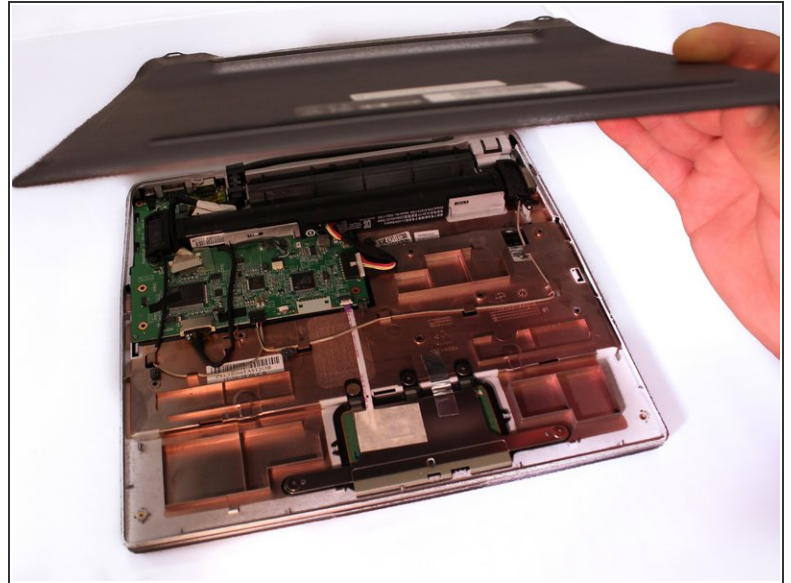
- After we remove the Keyboard, you can clearly see the screws under it. Remove the ten 3mm long phillips head screws.

Step 6



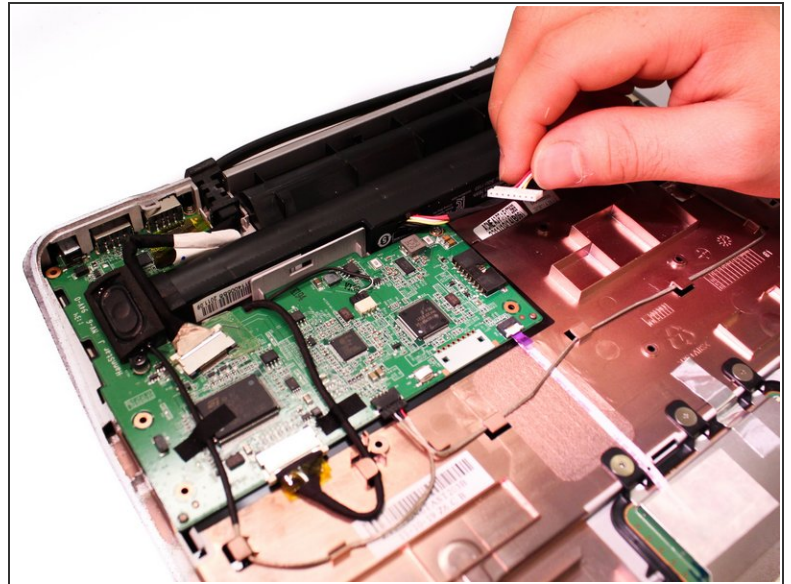
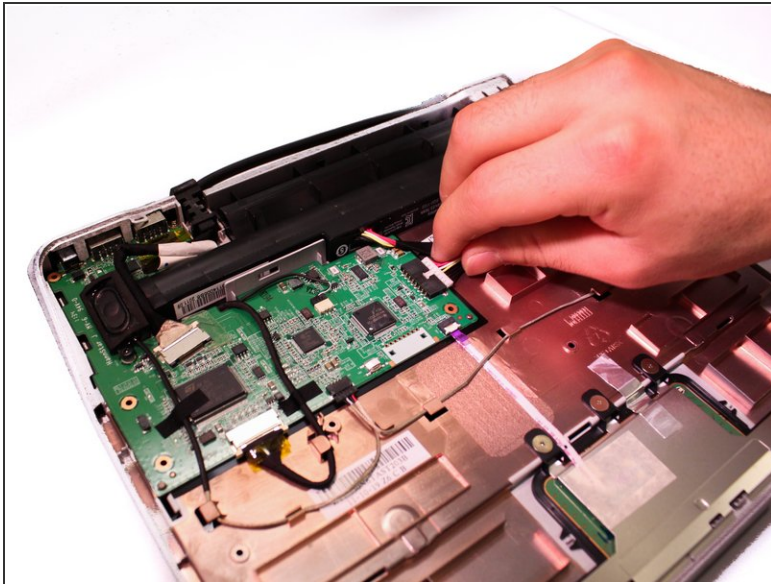
- Flip over the Lapdock and remove the four 3.5mm long phillips head screws from the bottom.

Step 7



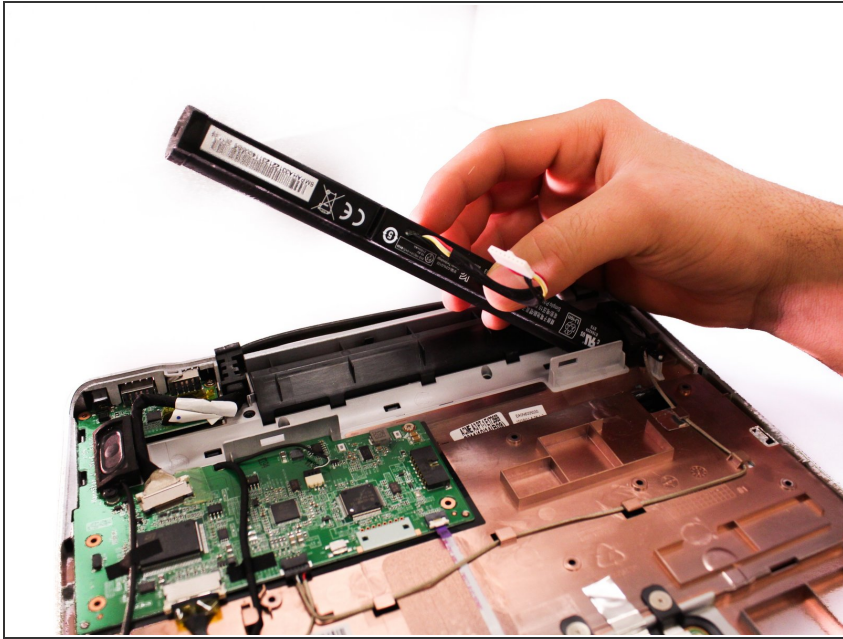
- Use a plastic prying tool to take off the bottom case. Make sure that all of the clips are unclipped before trying to remove the case.

Step 8 — Battery



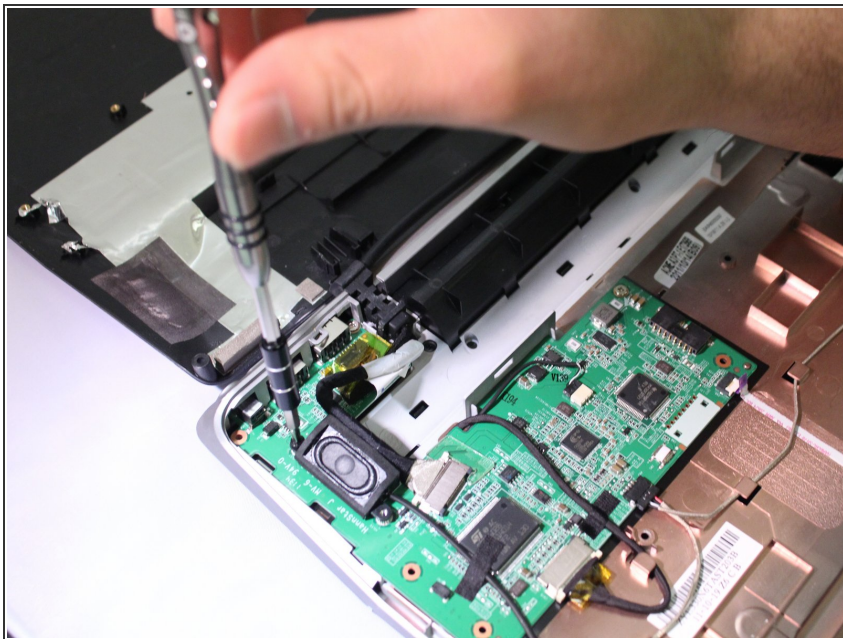
- Unplug battery from motherboard.

Step 9



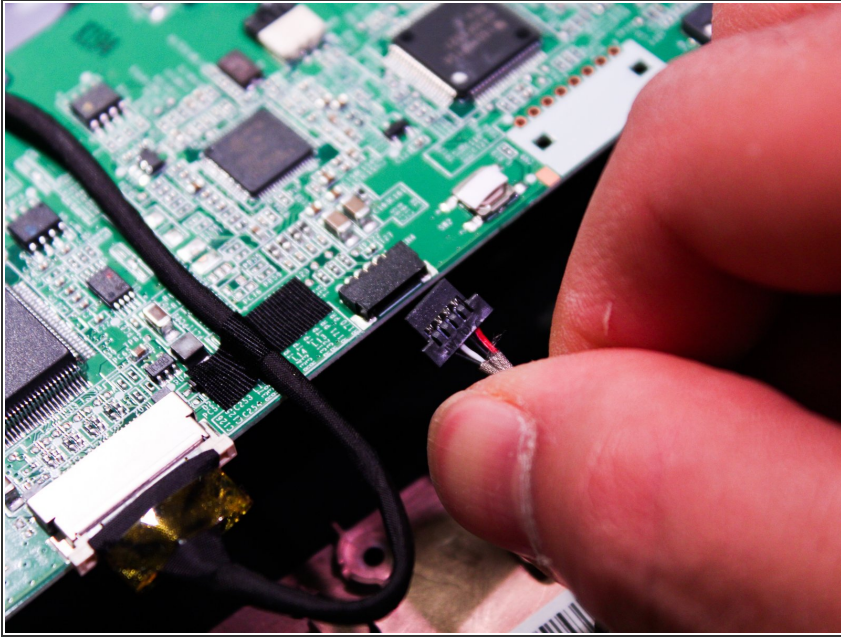
- Remove the battery.

Step 10 — Motherboard



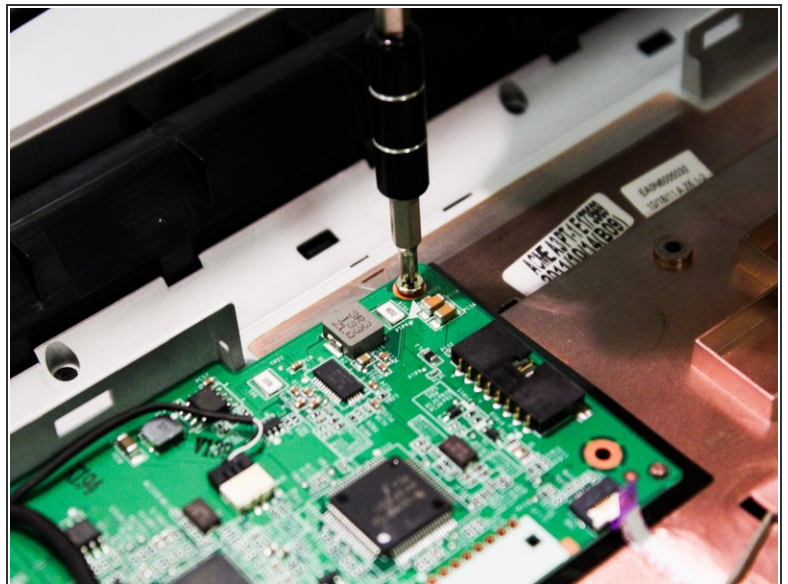
- Remove the two 2mm long Phillips head screws from the left speaker and move it away from the motherboard.

Step 11



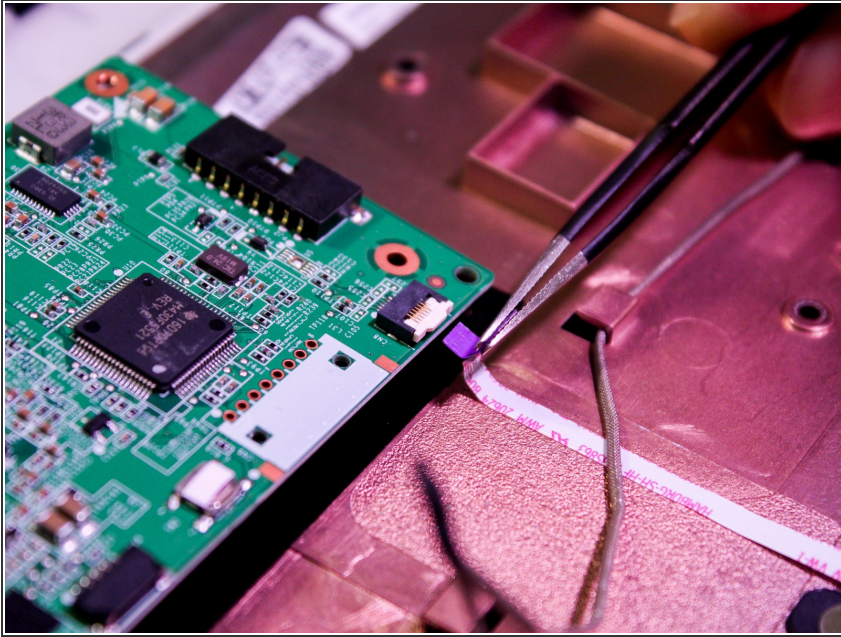
- Unplug the speakers from the motherboard

Step 12



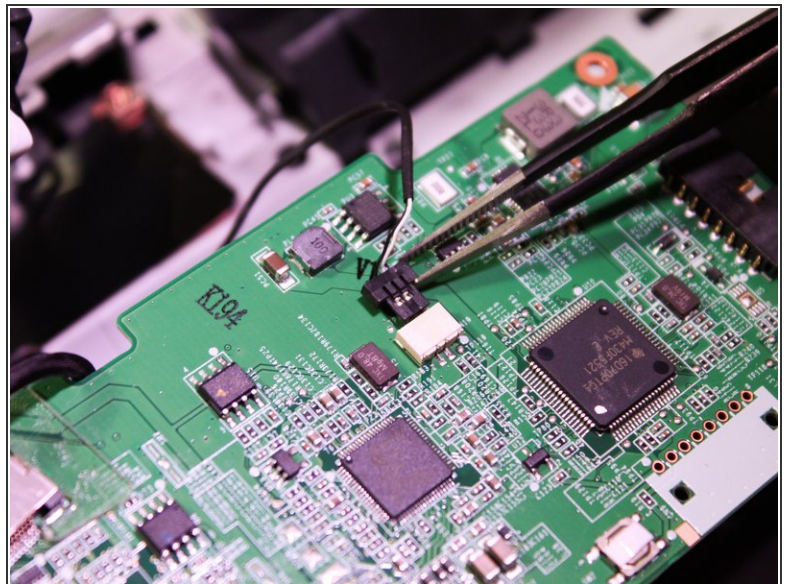
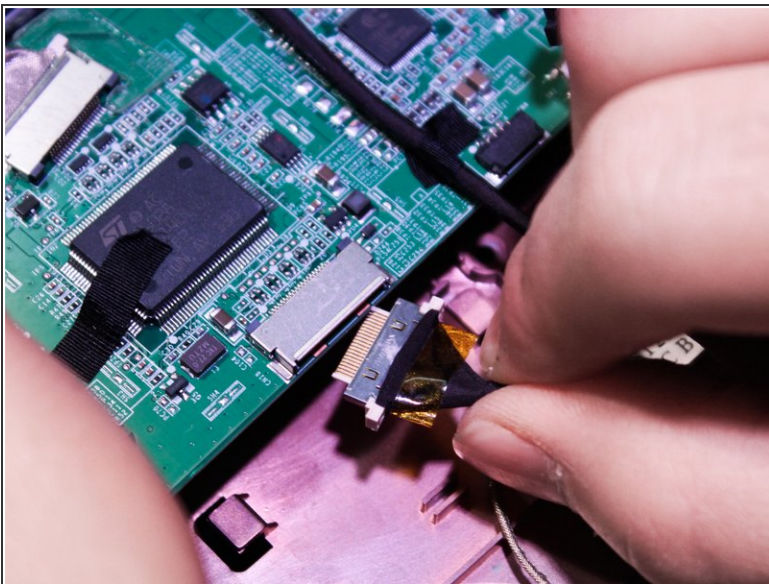
- Remove the two 2mm long phillips head screws that are holding down the motherboard.

Step 13



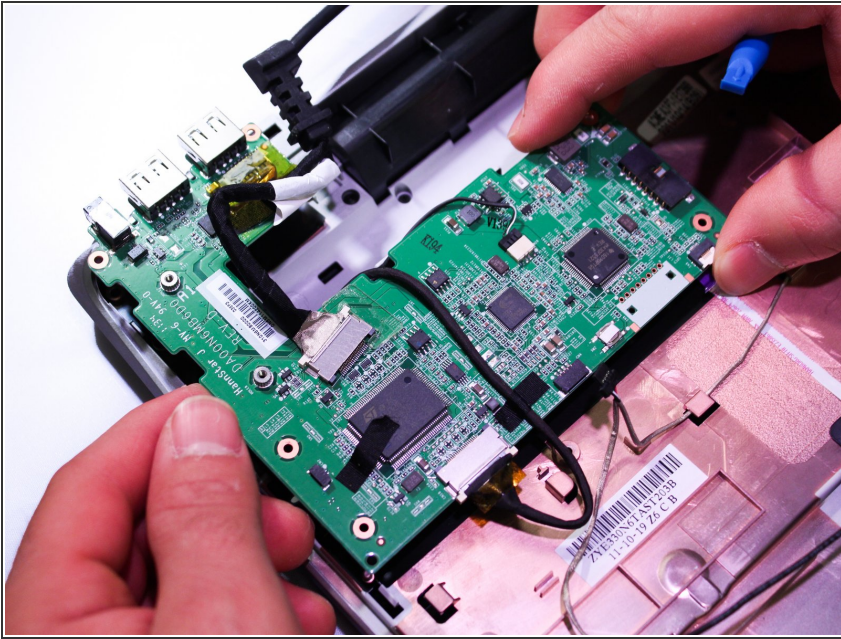
- Disconnect the ribbon cable that attaches to the trackpad from the motherboard.

Step 14



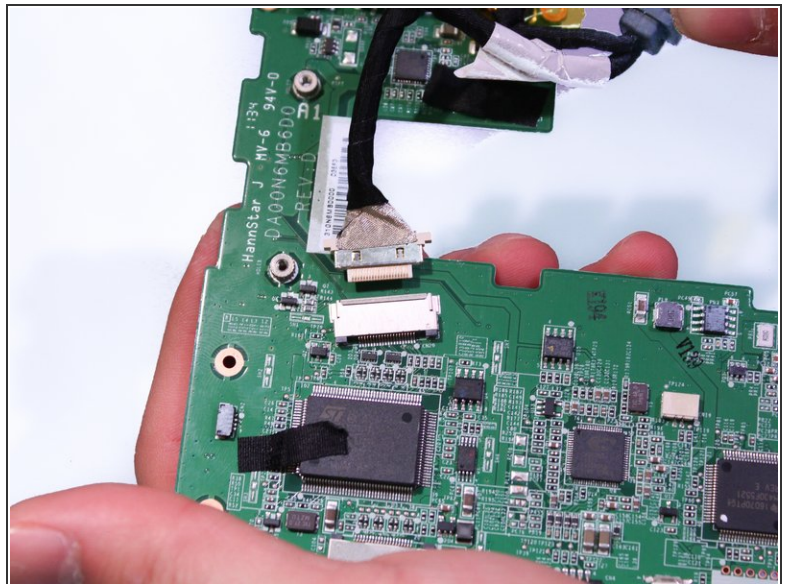
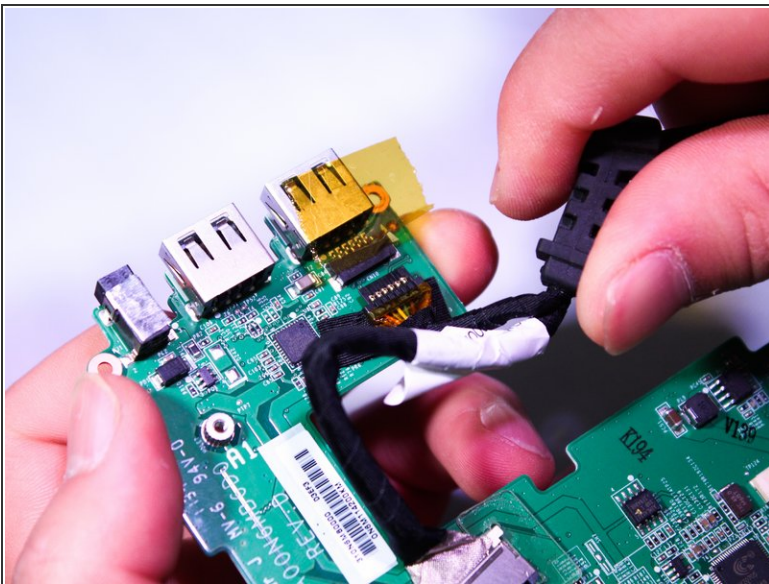
- Disconnect the two wires that attach to the screen from the motherboard.

Step 15



- The motherboard and phone adapter cable should both be free from the lapdock.

Step 16



- Unplug the two phone adapter cable connections to the motherboard.

To reassemble your device, follow these instructions in reverse order.