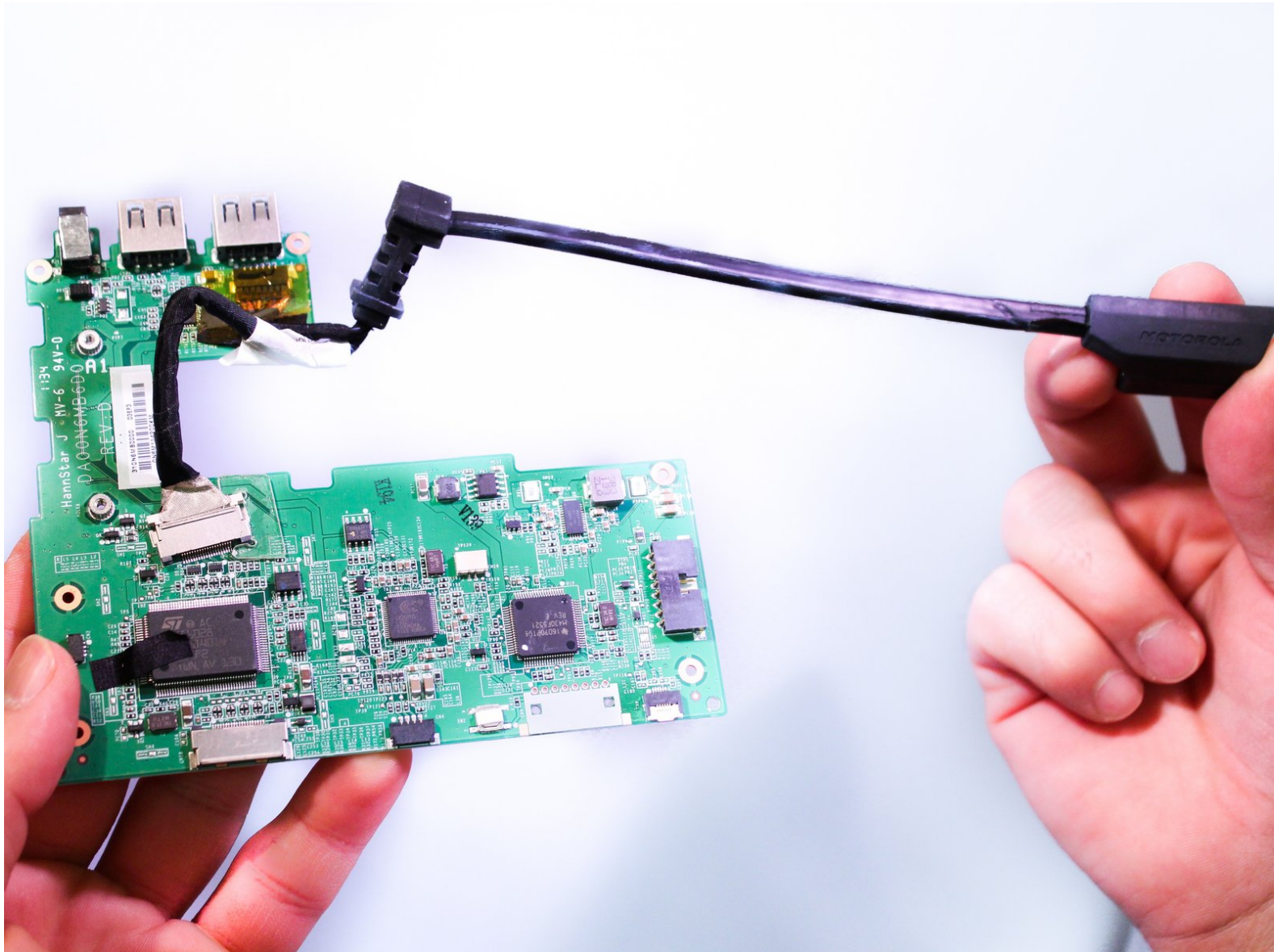




# Motorola Lapdock 100 Phone Adapter Cable Replacement

A guide to replace the phone adapter cable of the lapdock.

Written By: Anthony Aiumu



## INTRODUCTION

To start you will need to remove the bottom case of the lapdock as described in the guide. After doing this you will need to remove the lapdock battery. Then you will follow by unplugging the phone adapter cord from the motherboard. Then you will be able to remove and replace the cord.



### TOOLS:

- [Metal Spudger](#) (1)
  - [Phillips #00 Screwdriver](#) (1)
  - [iFixit Opening Tools](#) (1)
-

## Step 1 — Lower Case



- To take off the Keyboard there are three tabs at the top of the Keyboard in the locations shown in the picture that you must press and unclip. They are located behind each of the keys that are removed.

⚠ You do not need to remove any keys to unclip the keyboard. We did this for picture purposes only.

## Step 2



- You can use a small metal spudger to depress each tab to avoid scratching the keyboard.

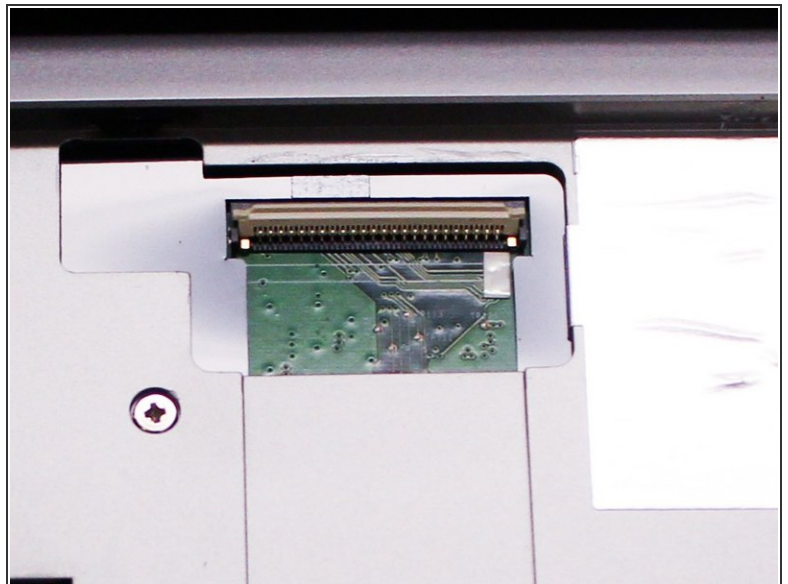


### Step 3



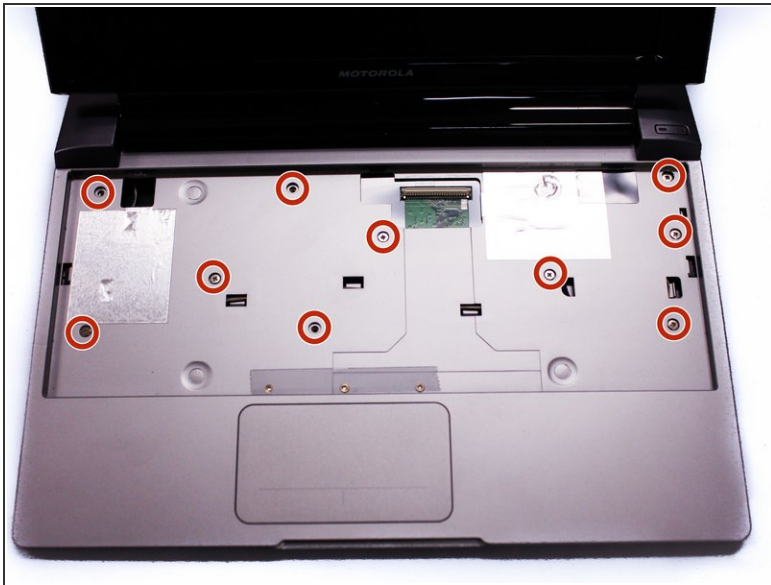
- Lift up keyboard so that you are able to see the ribbon cable connected to the contact.

### Step 4



- Flip up the ZIF connector holding the ribbon cable on the contact as shown in the two pictures and then gently disconnect the ribbon cable.

## Step 5



- After we remove the Keyboard, you can clearly see the screws under it. Remove the ten 3mm long phillips head screws.

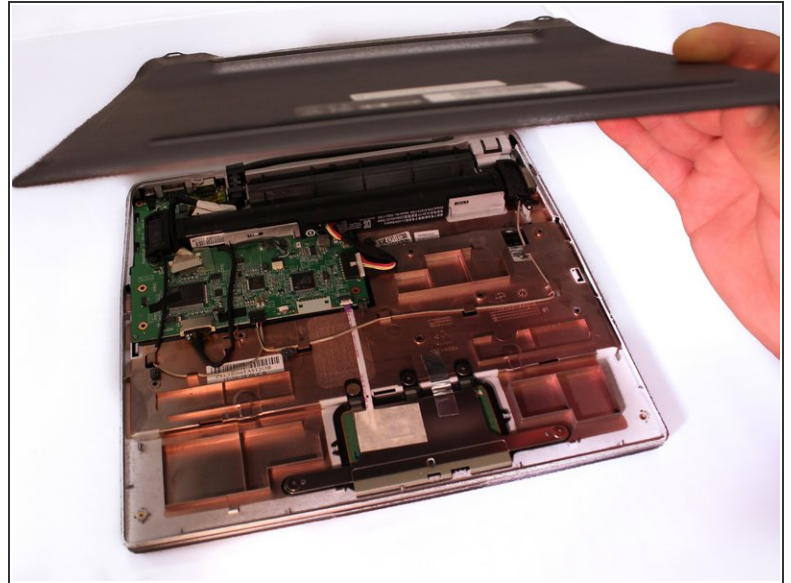
## Step 6



- Flip over the Lapdock and remove the four 3.5mm long phillips head screws from the bottom.

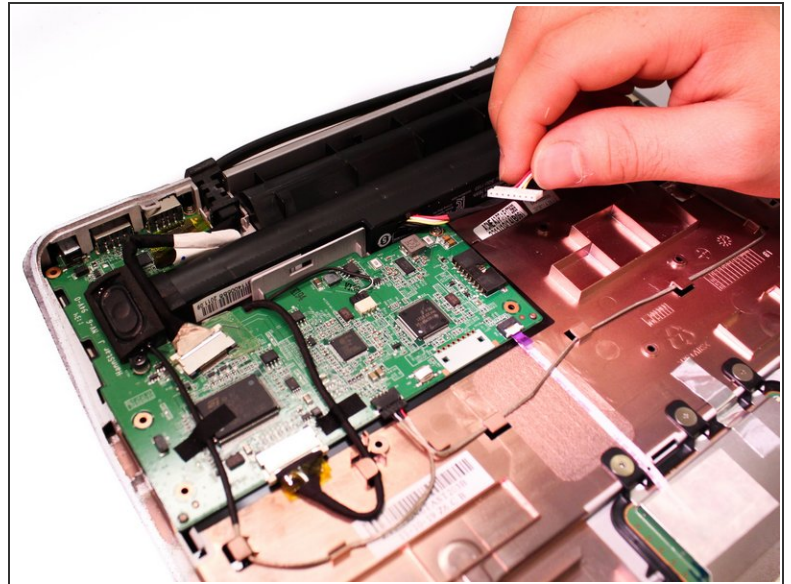
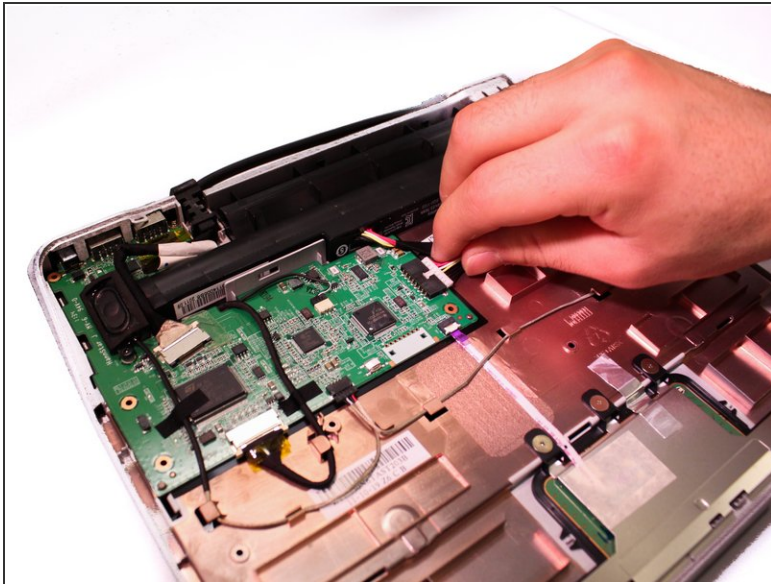


## Step 7



- Use a plastic prying tool to take off the bottom case. Make sure that all of the clips are unclipped before trying to remove the case.

## Step 8 — Battery



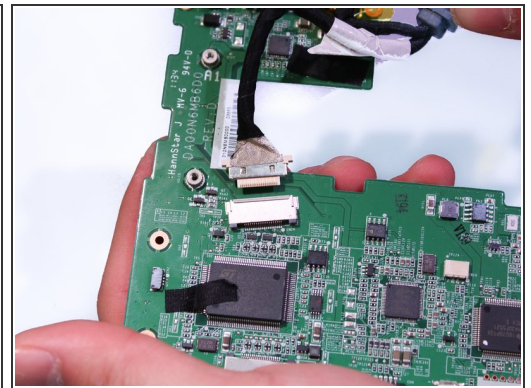
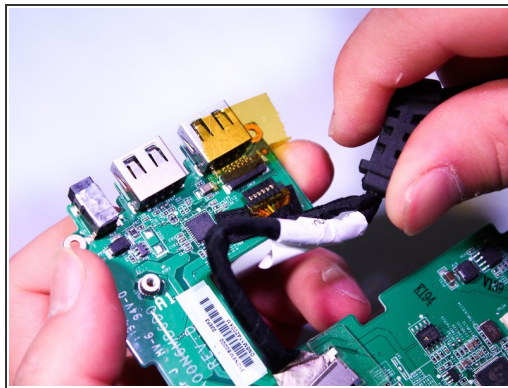
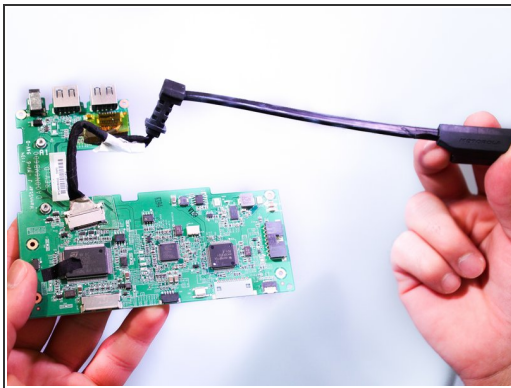
- Unplug battery from motherboard.

## Step 9



- Remove the battery.

## Step 10 — Phone Adapter Cable



- Unplug the two connections to the motherboard to free the adapter cable.
- ⓘ You do not need to remove the motherboard to remove the phone adapter cable. We did this for picture purposes only.

To reassemble your device, follow these instructions in reverse order.