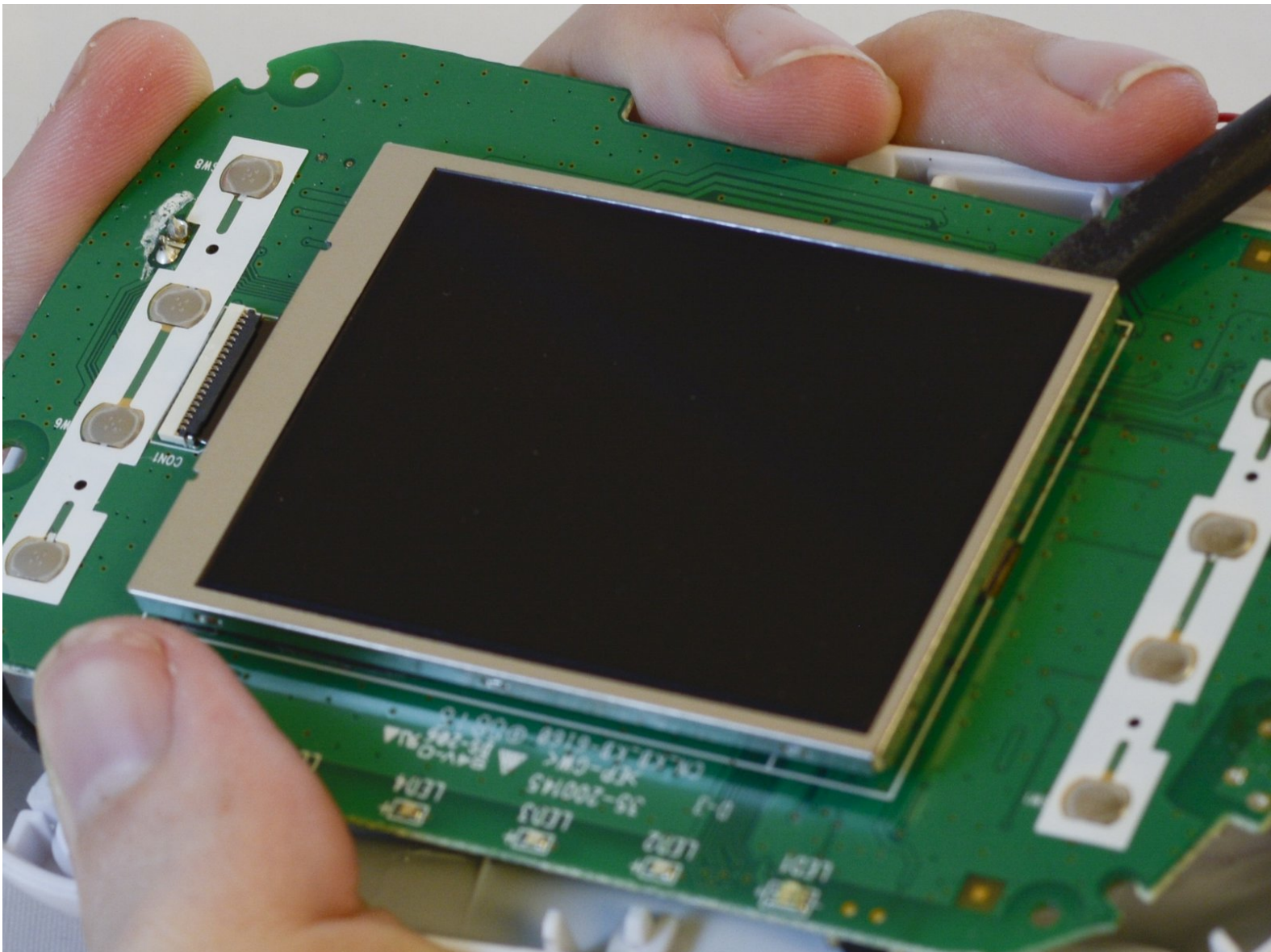




# Motorola MBP33SBU LCD Screen Replacement

This guide shows how to replace the LCD Screen in the parent unit of your baby monitor.

Written By: Ely Tilley



## INTRODUCTION

The LCD Screen Replacement is one of the trickier guides. The LCD screen is attached on adhesive foam tape that may be difficult to pry off. However, once you are able to remove the LCD Screen, the replacement itself is fairly simple.



### TOOLS:

- [Tweezers](#) (1)
  - [Phillips #1 Screwdriver](#) (1)
  - [Spudger](#) (1)
  - [iFixit Opening Tools](#) (1)
-

## Step 1 — Battery



- Using the Phillips #1 screwdriver, remove the battery cover screw.
- Remove the battery cover from its hinges and set aside.

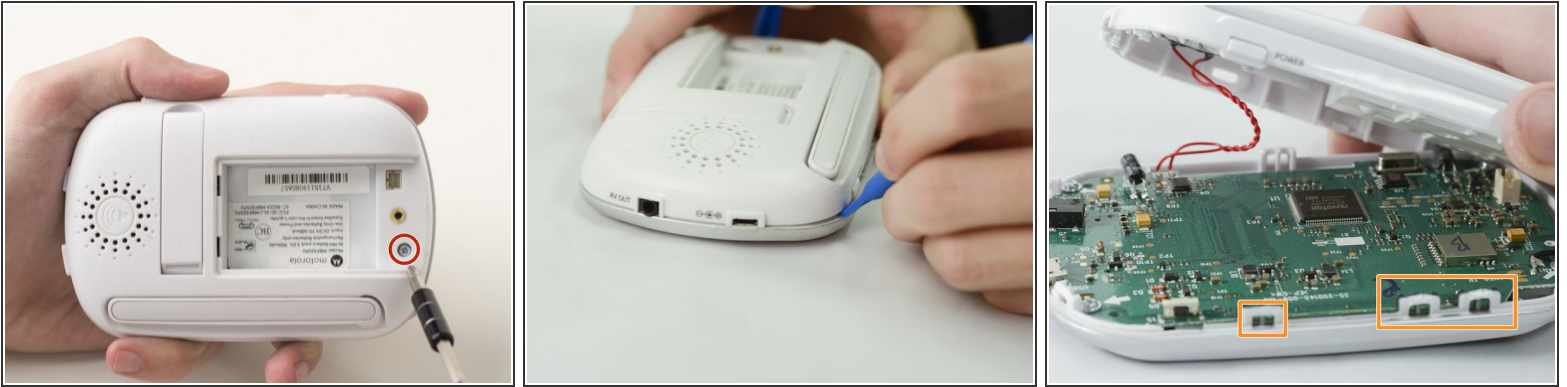
## Step 2



- Lift the battery from its slot.
- Using precision tweezers, grip the connector plug.
- Wiggle the connector plug and pull up to remove the connecting wires.
- Remove the battery from the unit and set it aside.

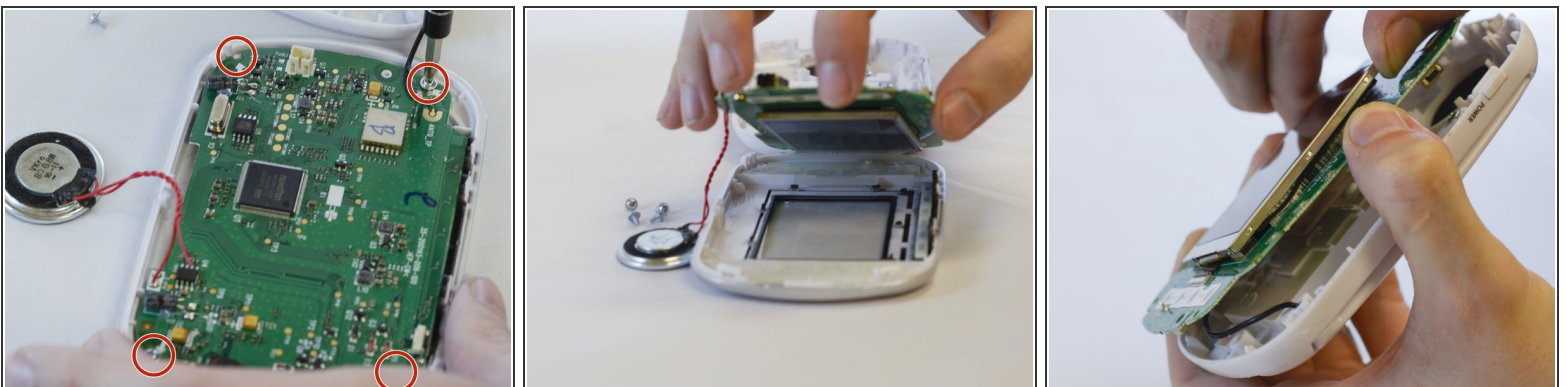


## Step 3 — LCD Screen



- Using the Phillips #1 screwdriver, remove the 7mm screw under the battery cover.
  - Using the blue plastic opening tools, begin prying open the corners and disconnecting the seven clasps around the edges of the parent unit.
- i** There should be seven plastic clasps that hook the top portion of the plastic shell to the bottom, these clasps may become damaged while disassembling.

## Step 4



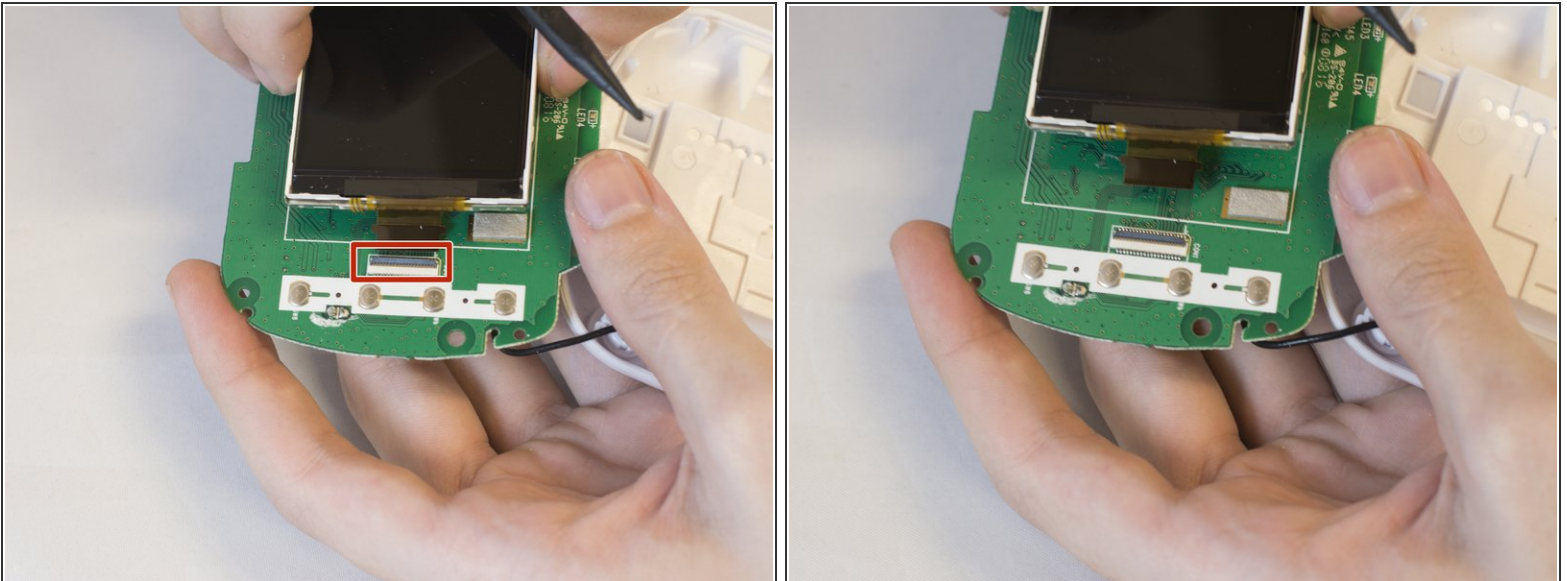
- Using the Phillips #1 screwdriver, remove the 5.5mm screws holding the circuit board to the shell.
  - Lift the circuit board from the face of the shell, the back should still be connected by the antenna and the speaker.
- i** The LCD Screen is glued to the circuit board by a protective foam layer. Attempts at removing the screen may result in damaged hardware.

## Step 5



- Using the flat end of the spudger tool, wedge the tool between the foam layer and the circuit board.
- ⓘ This might bend the metal frame around the screen out of place (don't worry about bending the metal, it is part of the screen being replaced).
- Using the spudger and your fingers, pry the screen from the circuit board.

## Step 6



- ⓘ There is a small black clasp that holds the circuit ribbon in place. The LCD screen can be removed without undoing the clasp but will need to be put back in place when installing the new screen.
- Gripping the screen with your fingers, gently pull and wiggle back and fourth until the circuit ribbon detaches from the circuit board.

To reassemble your device, follow these instructions in reverse order.