



Motorola MBP667CONNECT Camera Stand Replacement

This guide will show users how to disassemble and replace the camera stand of Motorola MBP667CONNECT baby monitor.

Written By: Anne Ngo



INTRODUCTION

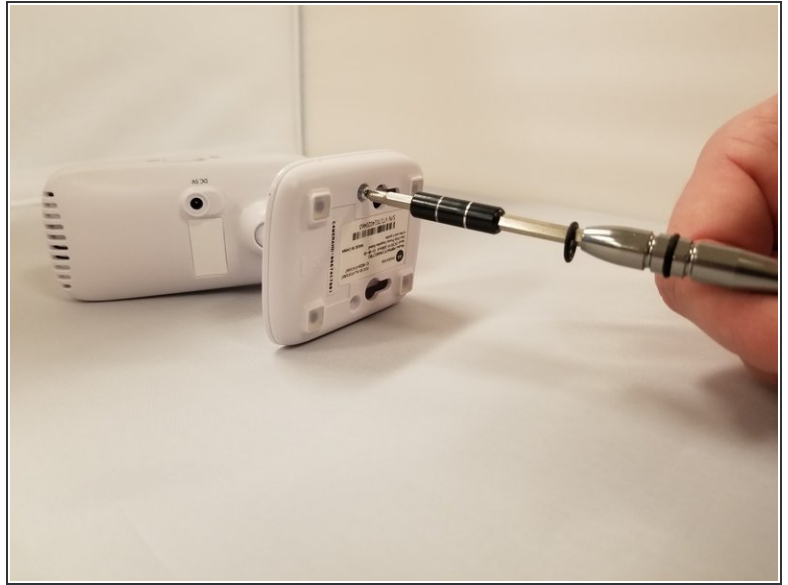
If the stand housing is cracked and cannot hold up the camera of the baby monitor, then this guide shows consumers percisely how to remove and replace the stand.



TOOLS:

- [Spudger](#) (1)
 - [Phillips #1 Screwdriver](#) (1)
-

Step 1 — Camera Stand



- Remove two 5 mm Phillips #1 screws from the bottom of the camera stand.

Step 2



- Use a nylon spudger to remove the casing.

Step 3



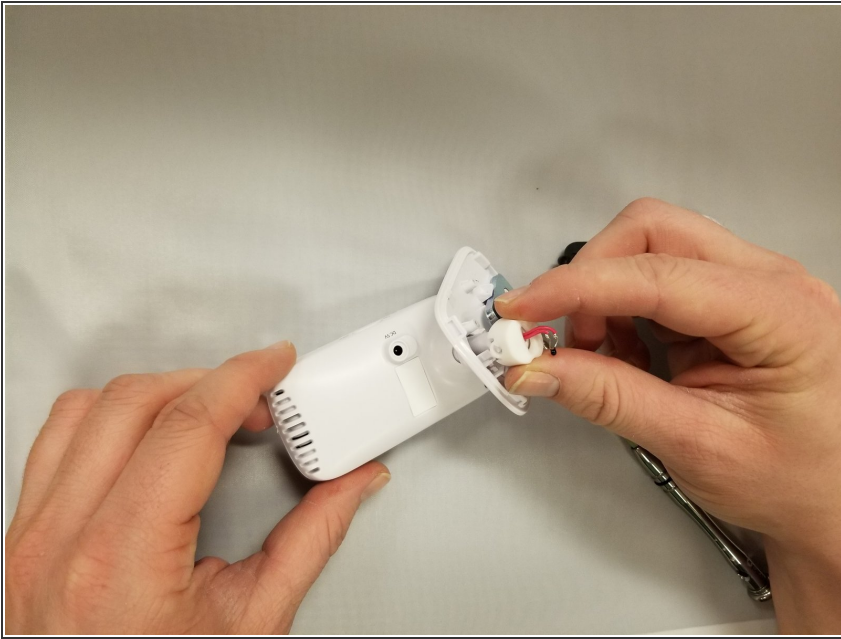
- Remove the two 5 mm Phillips #1 screws attached to the black plastic under the casing.

Step 4



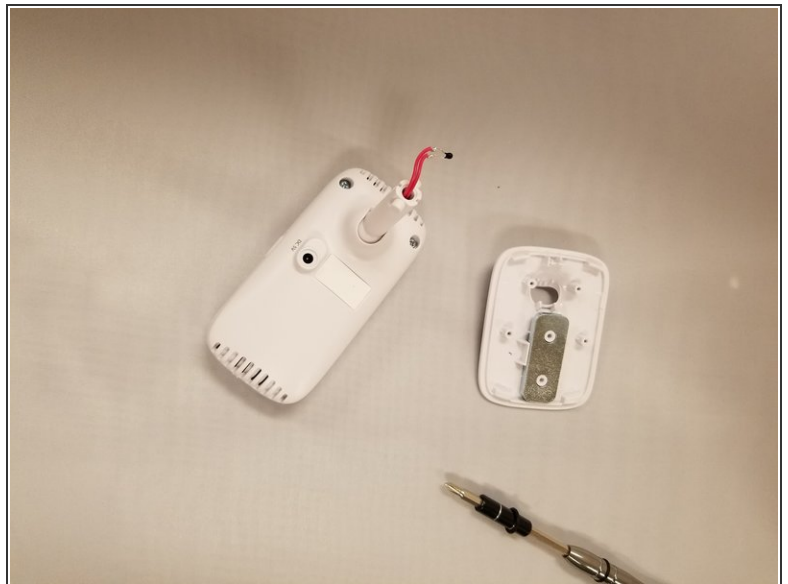
- Remove the black circular plastic part.

Step 5



- Remove the white plastic wire housing beneath the black plastic.

Step 6



- Now, remove the bottom of the stand by pulling it from the camera.

To reassemble your device, follow these instructions in reverse order.