

Written By: kushyal Budhan



INTRODUCTION

The Motorola Moto 360 is very delicate. Utmost caution must be taken when using the tools. Use this guide to replace the battery in your device. The battery part numbers are FW3S and FW3L for the 42mm and 46mm respective case sizes.



TOOLS:

- [Jimmy](#) (1)
- [Spudger](#) (1)
- [T3 Torx Screwdriver](#) (1)
- [iFixit Opening Tools](#) (1)
- [Tweezers](#) (1)
- [1.0 mm Flathead Screwdriver](#) (1)
- [iFixit Opening Picks set of 6](#) (1)
- [iOpener](#) (1)



PARTS:

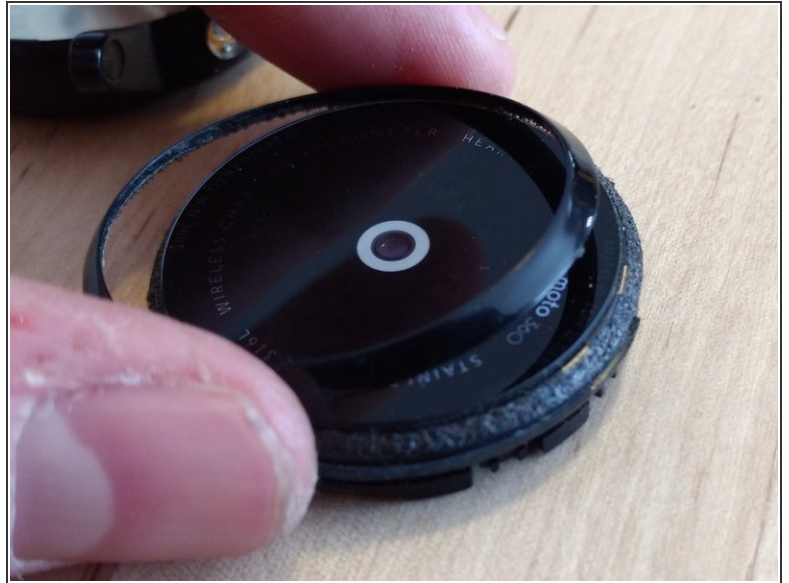
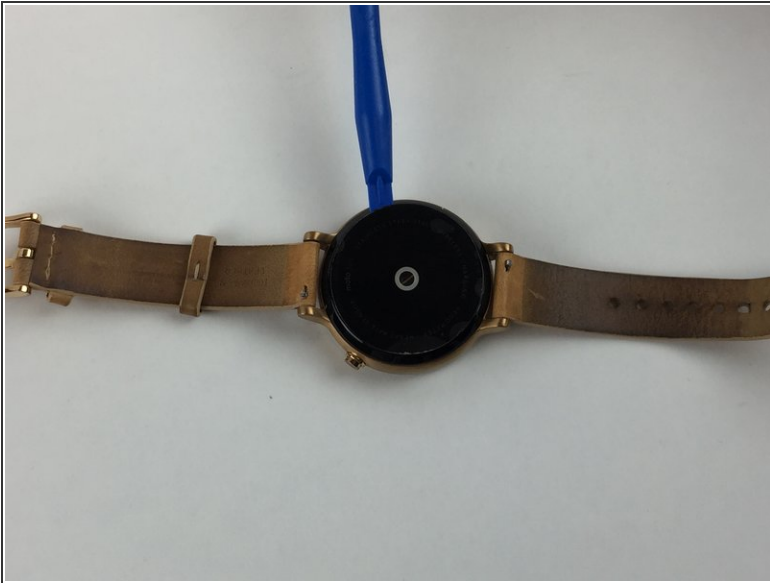
- [Moto 360 \(2nd Gen 42mm\) Replacement Battery](#) (1)
- [Moto 360 \(2nd Gen 46mm\) Replacement Battery](#) (1)

Step 1 — Battery Replacement



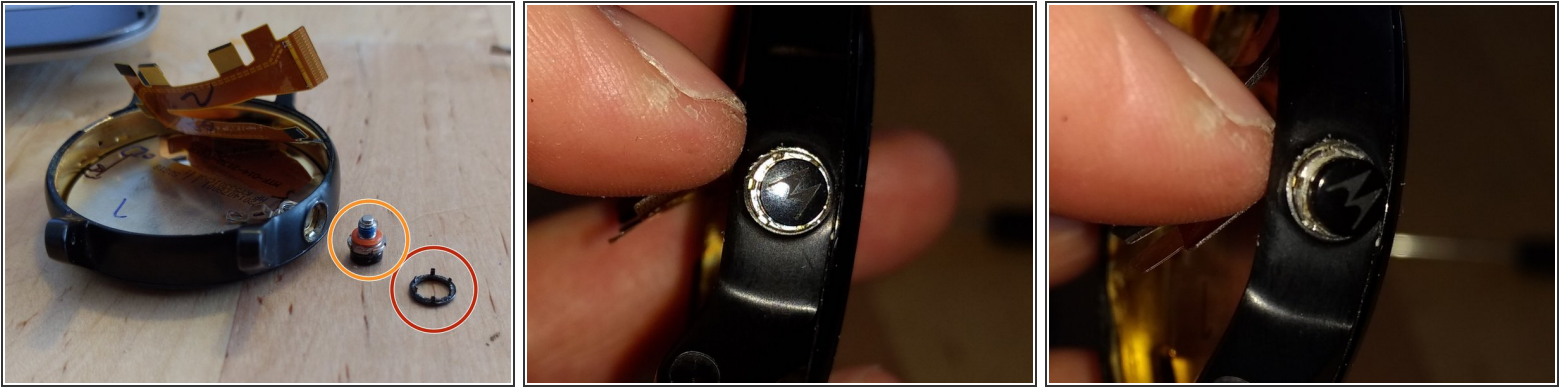
- [Heat an iOpener](#) and place on the rear cover to soften the adhesive underneath.

Step 2



- Insert an opening pick or opening tool in the small notch by the microphone hole, underneath the plastic trim ring.
- With the opening tool under the plastic ring, move the tool around the edge of the watch, gently prying up the ring as you go.
- ⓘ This will break the glue seal on the back ring, but don't worry this can be scraped off and reapplied.

Step 3



- Use fingernails or an opening tool or pick to pry the plastic trim off of the button.
 - ⚠ Be careful to apply even pressure around the ring when prying, as there are three retainer prongs that can be broken if the ring is twisted or tilted while being pulled out.
- Use a small six pin spanner to unscrew the button from the case.
 - ⓘ If you don't have access to the proper spanner, you can use a pair of tweezers, a very small screwdriver, or a paperclip to unscrew the button assembly. Just make sure to insert it into grooves right at the bottom and push sideways.
 - ⓘ There is blue thread locker on these threads, so light heat on the button side of the case may help.
- Completely unthread this and remove the button assembly from the case.

Step 4 — Remove Main Internals

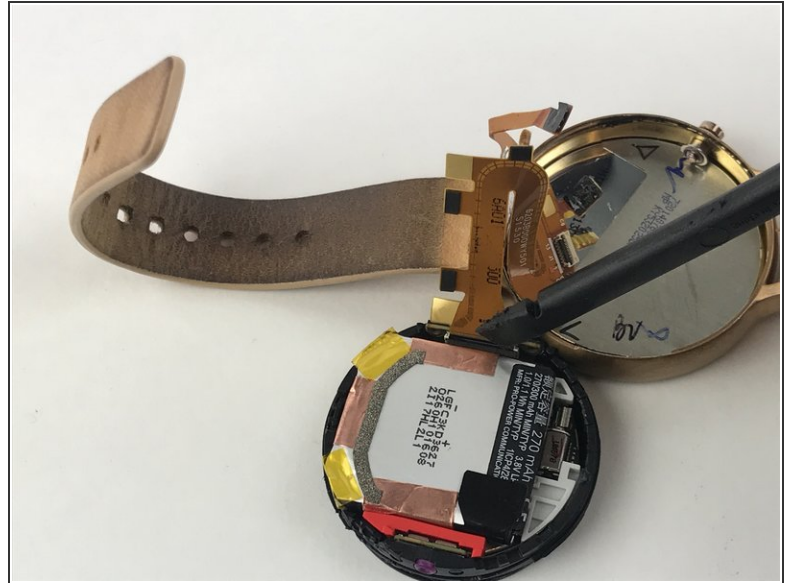
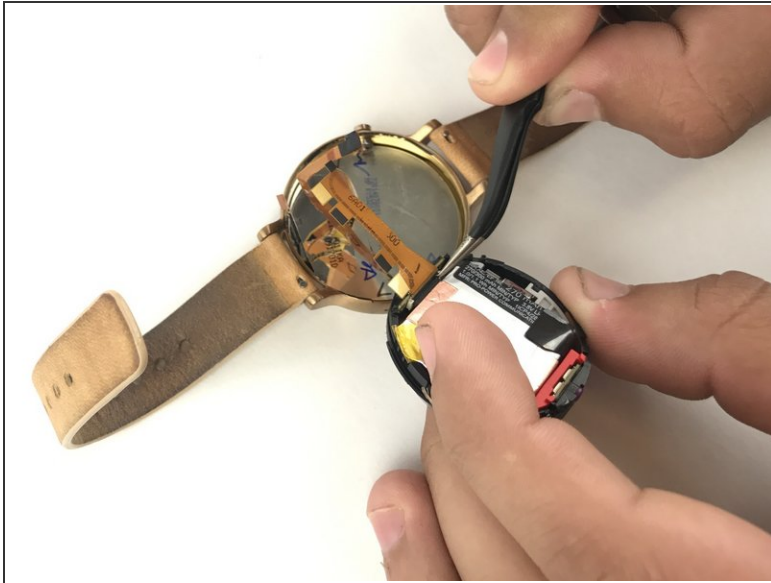


- Insert a prying tool into the notch near the microphone and slide the tool around the edge of the assembly while gently prying the assembly out.

i If the internal assembly does not come out easily, don't pry with force. Use your fingers to twist the assembly within the frame to release it.

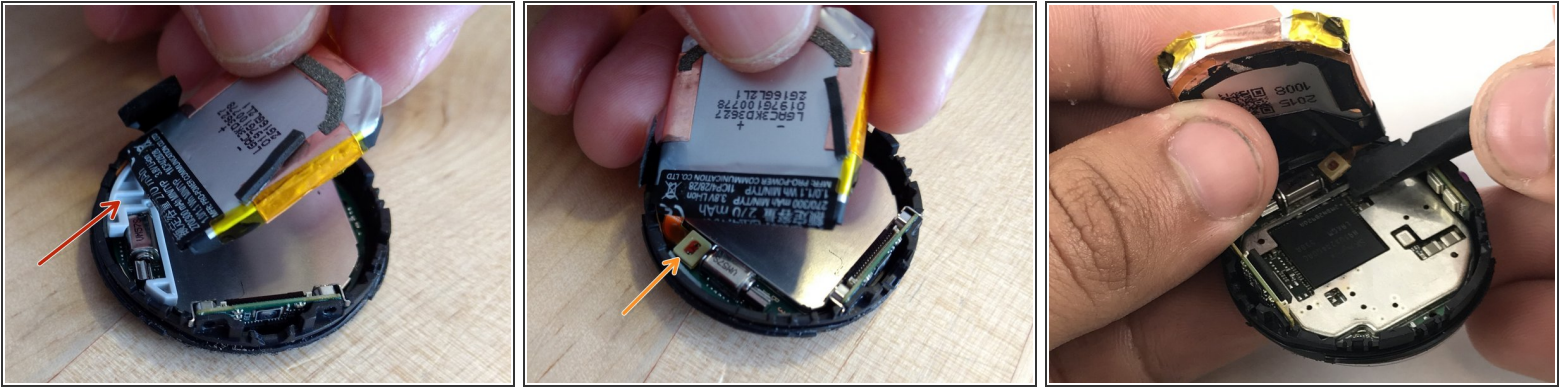
! Do not fully remove the internal assembly yet. There is a flex cable connecting the assembly to the watch display that needs to be disconnected before the assembly is completely removed.

Step 5 — Disconnect the Flex Cable




- Use tweezers to remove a rubber strip on the back of the connector.
- Use a fingernail or the tip of a spudger to lift the small locking flap on the connector and disconnect the ribbon cable.

Step 6 — Remove the Battery



- Gently pry the battery out of the case.
- The battery adhesive is stubborn, and the shield over the motherboard may come off with the battery. This is okay; use an opening pick to separate the battery and the shield, then snap the shield back onto the motherboard.

 Do not pull the battery all the way out after you separate it from the shield. There is a fragile battery cable that must be disconnected before the battery is completely removed.

- Remove the grey plastic piece that sits next to the battery.
- Use tweezers or the tip of a spudger to disconnect the battery connector.

To reassemble your device, follow these instructions in reverse order.