



Motorola Moto 360 2nd Gen LCD Display Replacement

This page will show the steps to replacing the LCD display of the smartwatch

Written By: Ivana Lum Wai



INTRODUCTION

The Motorola Moto 360 2nd gen is a very delicate device, so take extreme caution when breaking the device apart. Use this guide to replace the LCD Display in your device.



TOOLS:

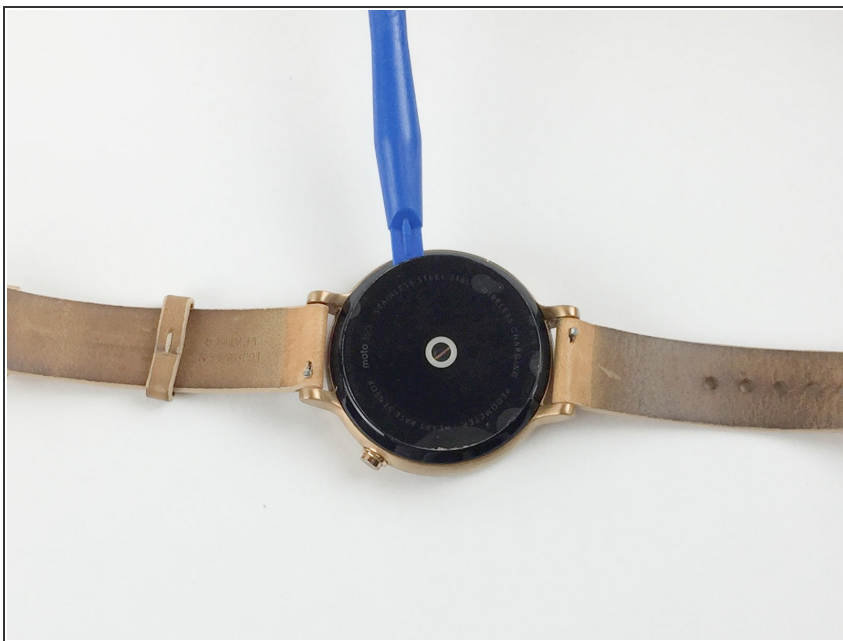
- [iOpener Kit](#) (1)
 - [Jimmy](#) (1)
 - [iFixit Opening Tools](#) (1)
-

Step 1 — LCD Display



- Place the watch on a flat surface then lay the iOpener across the back panel of the watch

Step 2



- Using the plastic opening tool, gently work around the back panel loosening the adhesive.
- ⓘ This step may require more than one heating.

Step 3



- After loosening the adhesive, carefully pull off the back panel.

Step 4



- Remove the copper ribbon that connects the motherboard to the display.
- ⓘ Remember the placement for reattachment purposes.
- ⚠ The copper ribbon is flimsy so handle with care.

Step 5



- Use fingernails or an opening tool or pick to pry the plastic trim off of the button. Be careful to apply even pressure around the ring when prying, as there are three retainer prongs that can be broken if the ring is twisted or tilted while being pulled out. Use a small six pin spanner to unscrew the button from the case.
- If you don't have access to the proper spanner, you can use a pair of tweezers, a very small screwdriver, or a paperclip to unscrew the button assembly. Just make sure to insert it into grooves right at the bottom and push sideways. There is blue thread locker on these threads, so light heat on the button side of the case may help.



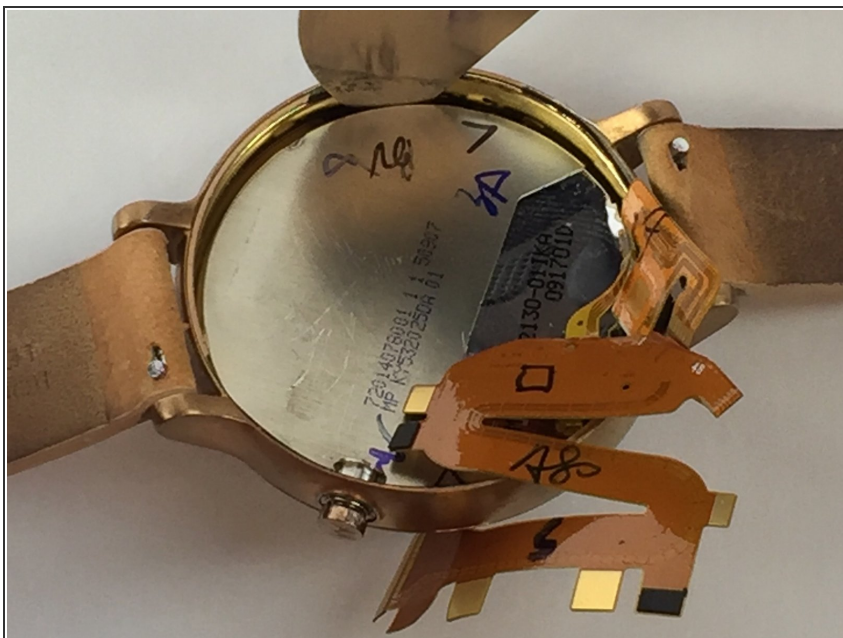
Completely unthread this and remove the button assembly from the case.

Step 6



- Repeat the heating process on the front face of the watch using the iOpener.
- With the plastic opening tool, work around the rim, gently loosening the adhesive the same way as removing the rear cover.

Step 7



- After successfully loosening the adhesive, slide the LCD display out the casing.

To reassemble your device, follow these instructions in reverse order.