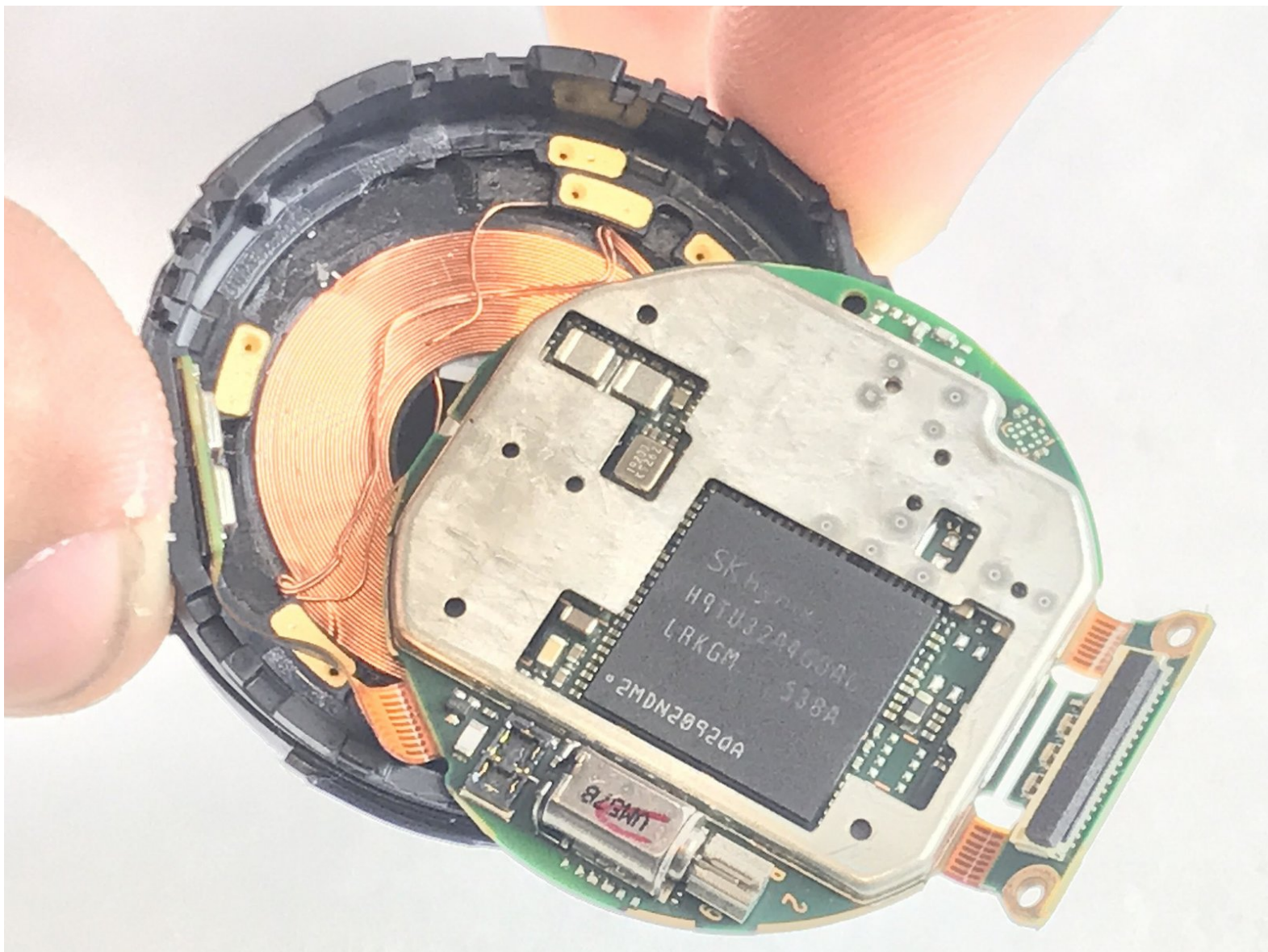




Motorola Moto 360 2nd Gen Motherboard Replacement

How to of replacing the motherboard for the Motorola moto 360 2nd smart watch.

Written By: Mohammad Abuolien



INTRODUCTION

Use this guide to replace the motherboard in your device.



TOOLS:

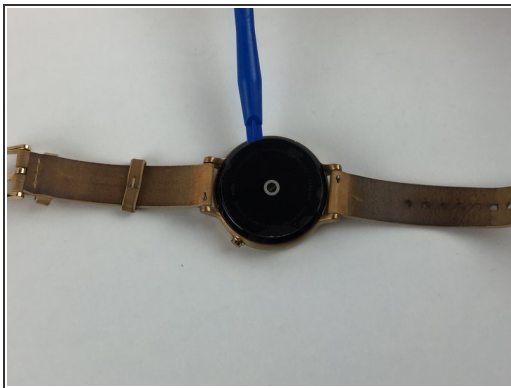
- [Jimmy](#) (1)
 - [iOpener](#) (1)
 - [iFixit Opening Tools](#) (1)
 - [Spudger](#) (1)
 - [Tweezers](#) (1)
 - [T3 Torx Screwdriver](#) (1)
-

Step 1 — Motherboard



- Place the heated iOpener on the face of the rear cover to loosen the adhesive underneath.
- Set the watch face down on a flat surface.

Step 2



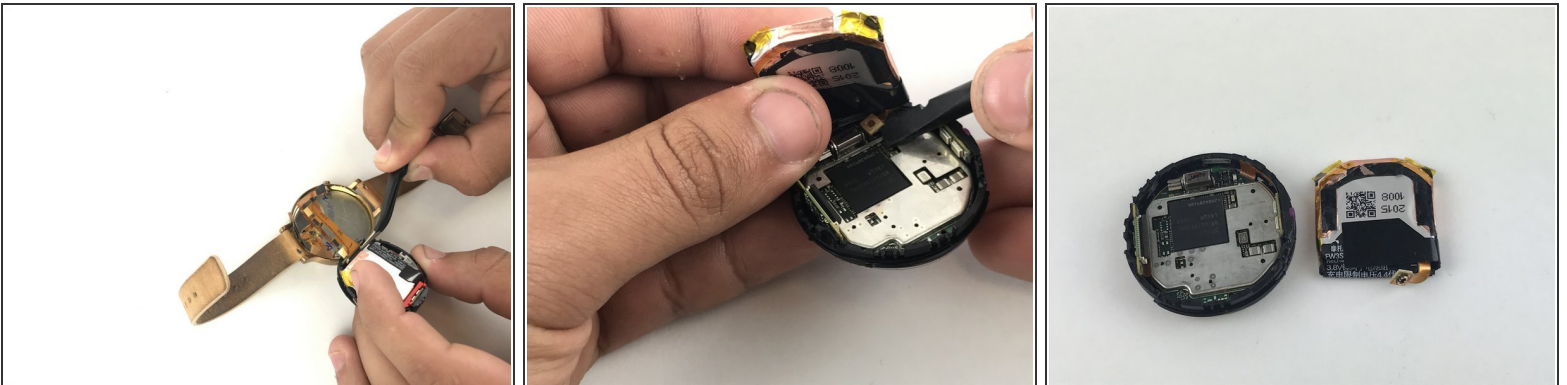
- Work your way entirely around the rear cover.
- Gently slide the blue opening tool between the rear cover and the metal casing.

Step 3



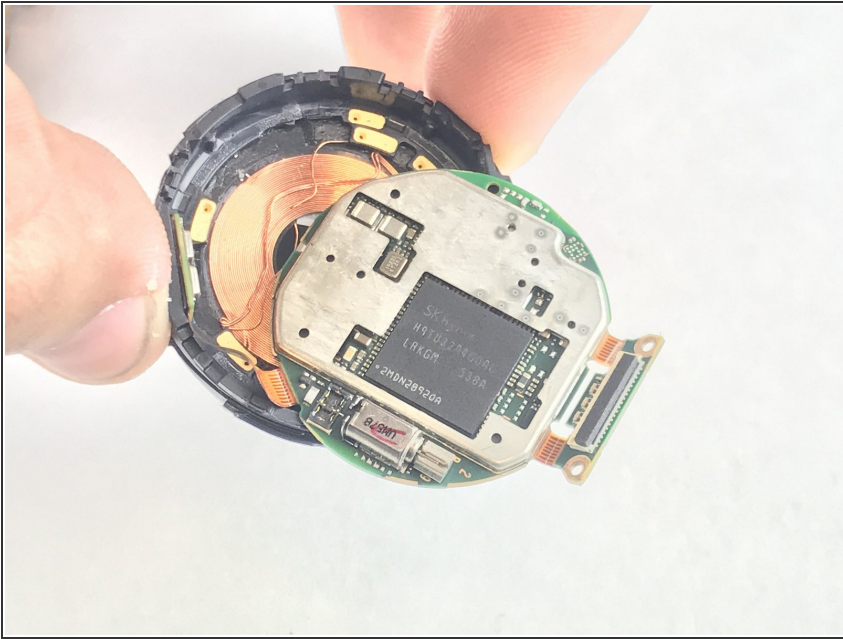
- Carefully remove the inside of the watch.
- Carefully unscrew the two screws using the T3 Torx Screwdriver.

Step 4



- Carefully remove all connectors.
- Gently remove the battery from the motherboard after all connectors are removed.

Step 5



- Detach the copper ribbon connecting the motherboard and the display.
- Use the spudger to separate the motherboard casing from the rear housing.

To reassemble your device, follow these instructions in reverse order.