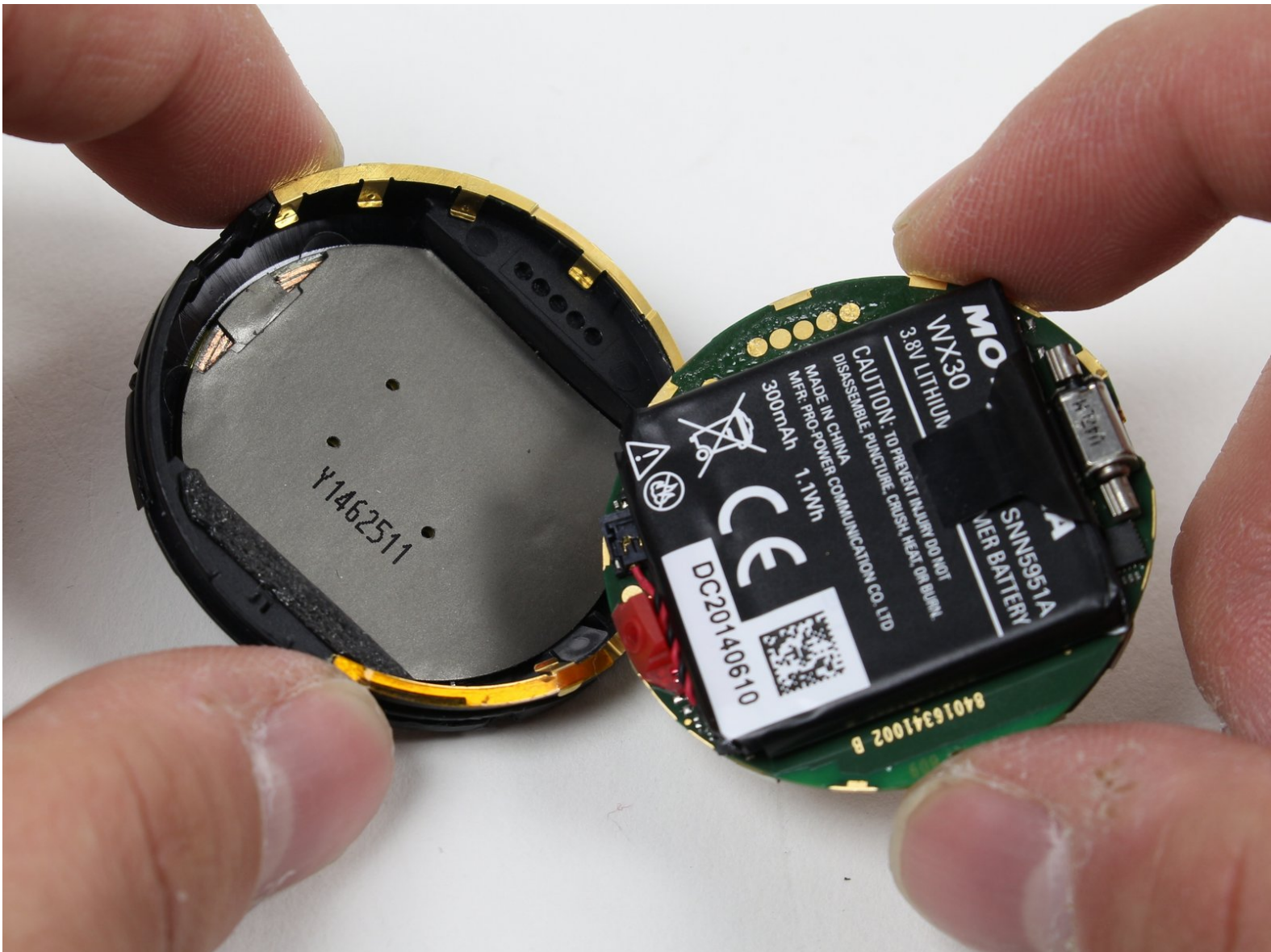




Motorola Moto 360 Battery Replacement

This guide will walk you through the steps needed to access, detach, and replace the battery.

Written By: Keslyn Huntington



INTRODUCTION

The entirety of the Moto 360 is very fragile. Take extreme caution when using tools. You will have to use the iOpener, so be sure to review [this](#) guide for instruction if you are unfamiliar with using it.



TOOLS:

- [iOpener Kit](#) (1)
- [Jimmy](#) (1)
- [Spudger](#) (1)



PARTS:

- [Moto 360 \(1st Gen\) Replacement Battery](#) (1)

Step 1 — Rear Cover



- Set the watch face down on a flat surface.
- Place the heated [iOpener](#) on the face of the rear cover to loosen the adhesive underneath.

Step 2 — Remove the back cover without force



- Follow the instructions here to remove the back cover without force by using some needles in the right places:
- [Motorola Moto 360 Case Locking Fastener Replacement](#)
- Then continue with step 5. Or don't use needles and just continue with the next steps.

Step 3



- Gently slide the blue opening pick between the rear cover and the metal casing.
 - ⚠ The rear cover is extremely fragile. Be very delicate when using the opening pick.
- Work your way entirely around the rear cover.
 - ⓘ It may take several attempts of reheating the adhesive to get the rear cover loose enough to pull off.

Step 4



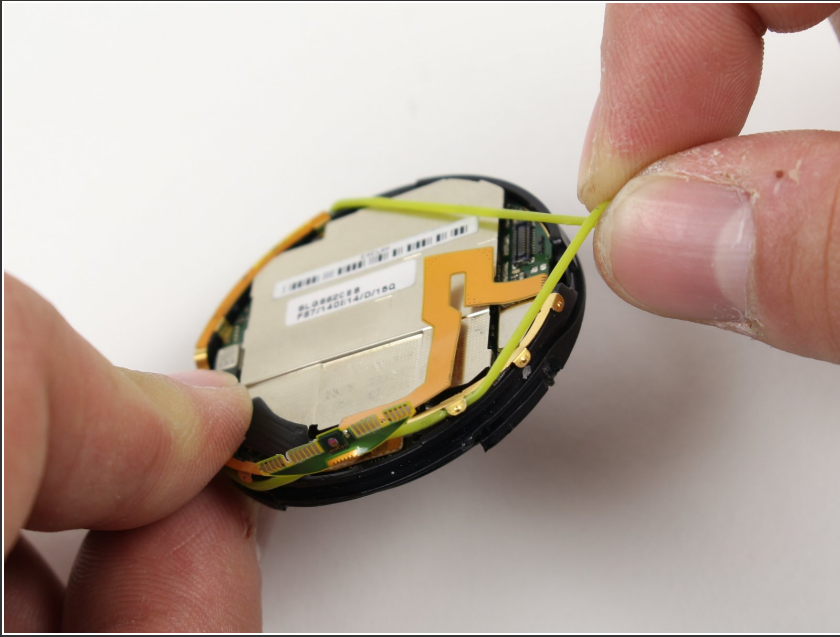
- Once the adhesive has been successfully loosened, gently pull the rear cover off.

Step 5 — O-Ring



- To get to the O-Ring, use the Jimmy to gently pry off the rear housing.

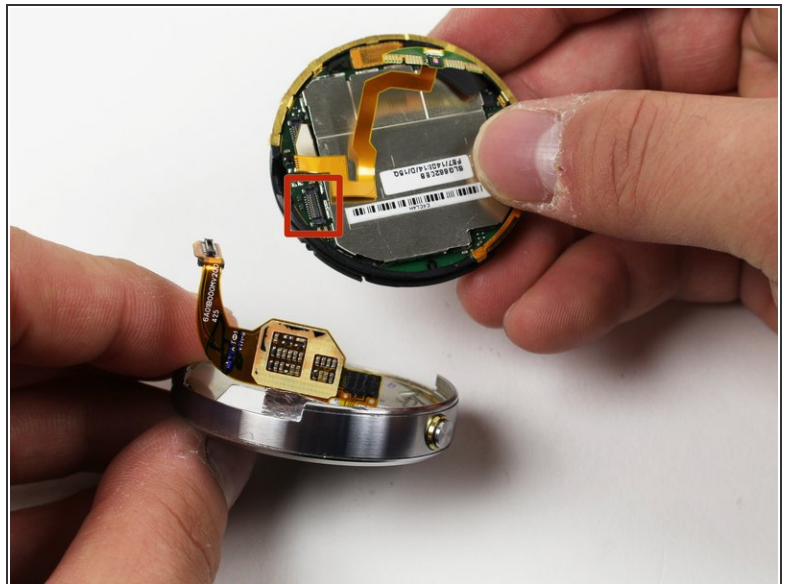
Step 6



- Pinch the green rubber O-Ring and slide it off of the watch.

⚠ The O-Ring is delicate and is easily severed. Use care around sharp objects.

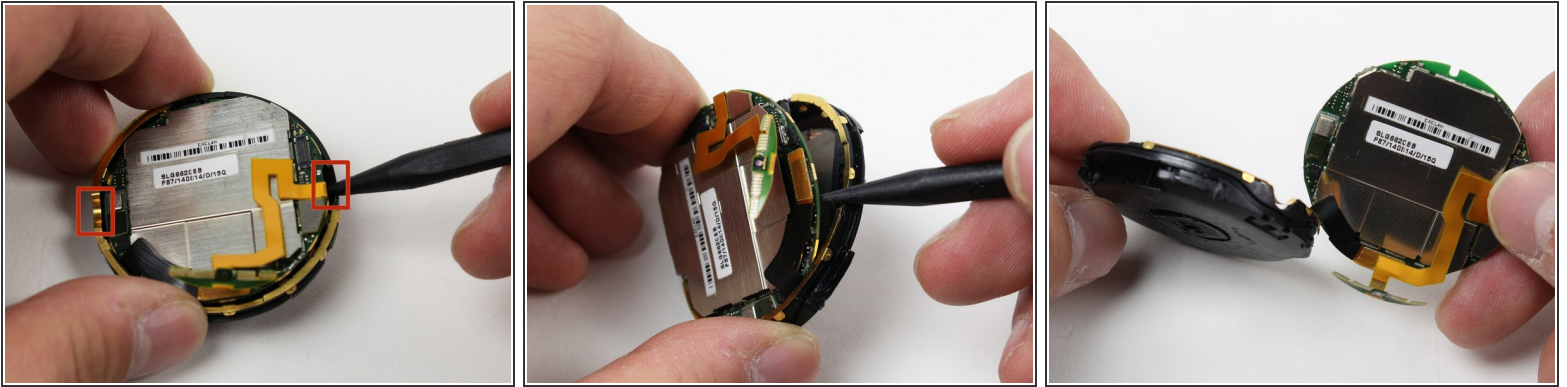
Step 7 — Battery



- Detach the copper ribbon connecting the motherboard and the display.
 - For reassembly, attach copper ribbon where it is marked.

⚠ The copper ribbon is fragile and easily disconnects. Remember where it goes so as to reconnect it properly.

Step 8



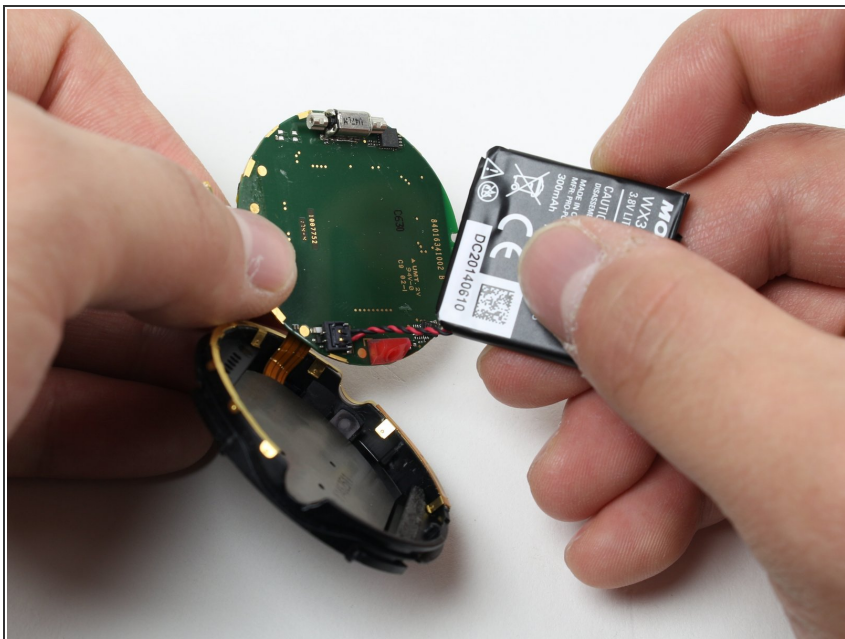
- Use the spudger to separate the battery casing from the rear housing.
- For leverage, place the spudger in either groove in the rear housing.

Step 9



- Lift the black plastic pull-tab and pull back on the battery until it's removed from the battery casing. The battery is very firmly secured, so you may have to use a great deal of force.
- ⓘ There are two strips of adhesive securing the battery. You may have to use the spudger to loosen the adhesive. Use care not to damage electronics.

Step 10



- Once the battery is separate from the back of the battery casing, disconnect the red and black wire by prying or pulling it straight up from the board (perpendicular to the board surface).

To reassemble your device, follow these instructions in reverse order.