



# Motorola Moto 360 LCD Display Replacement

This guide will show you how to remove and replace the Moto 360 LCD screen.

Written By: Cole Twitchell



---

## INTRODUCTION

The entirety of the Moto 360 is very fragile. Take extreme caution when using tools.

---



### TOOLS:

- [iOpener Kit](#) (1)
  - [Jimmy](#) (1)
-

## Step 1 — Rear Cover



- Set the watch face down on a flat surface.
- Place the heated [iOpener](#) on the face of the rear cover to loosen the adhesive underneath.

## Step 2 — Remove the back cover without force



- Follow the instructions here to remove the back cover without force by using some needles in the right places:
- [Motorola Moto 360 Case Locking Fastener Replacement](#)
- Then continue with step 5. Or don't use needles and just continue with the next steps.

## Step 3



- Gently slide the blue opening pick between the rear cover and the metal casing.
  - ⚠ The rear cover is extremely fragile. Be very delicate when using the opening pick.
- Work your way entirely around the rear cover.
  - ⓘ It may take several attempts of reheating the adhesive to get the rear cover loose enough to pull off.

## Step 4



- Once the adhesive has been successfully loosened, gently pull the rear cover off.

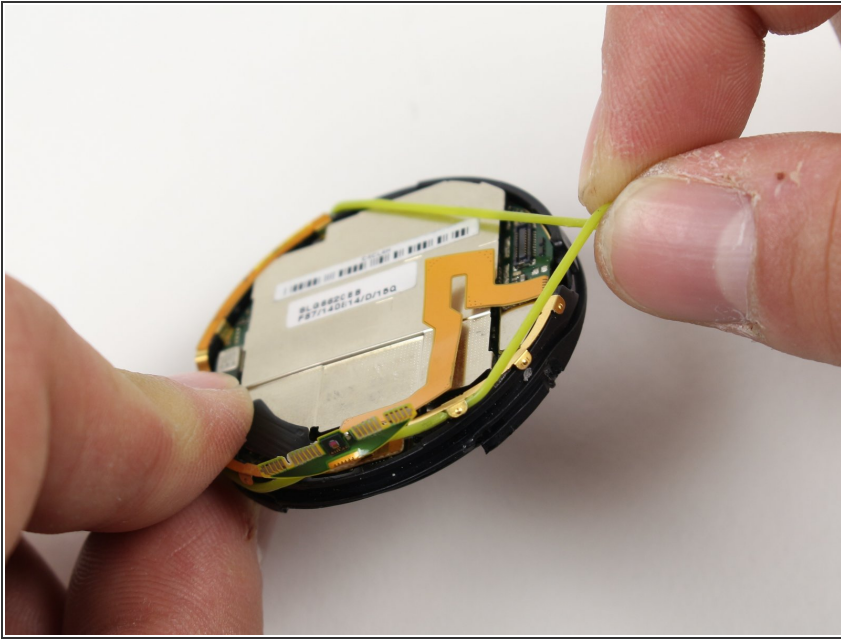
## Step 5 — O-Ring



- To get to the O-Ring, use the Jimmy to gently pry off the rear housing.



## Step 6



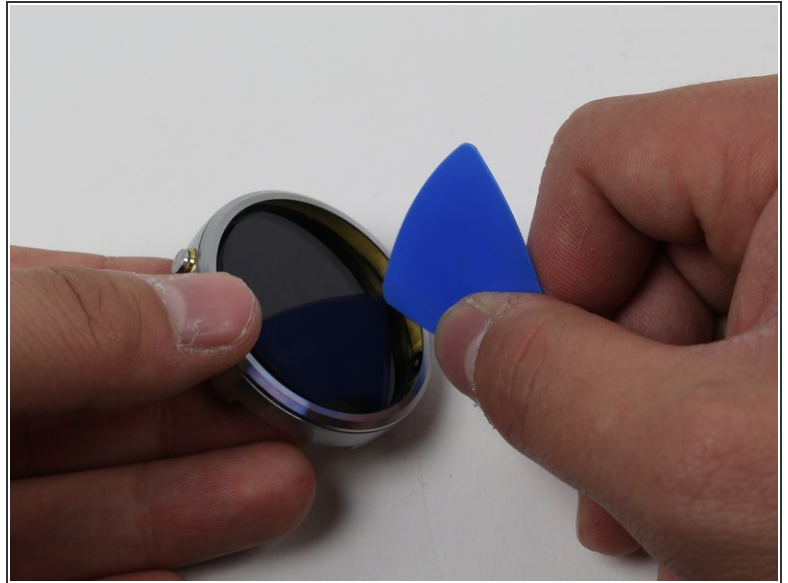
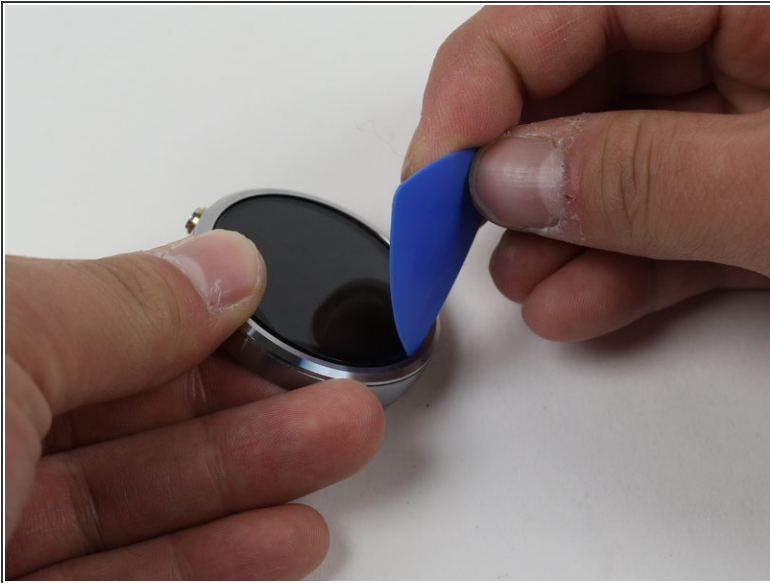
- Pinch the green rubber O-Ring and slide it off of the watch.
- ⚠ The O-Ring is delicate and is easily severed. Use care around sharp objects.

## Step 7 — LCD Display



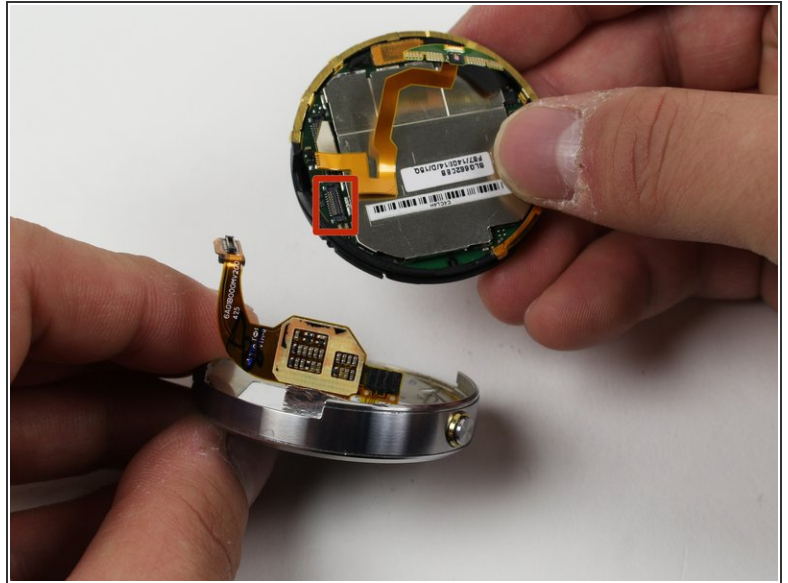
- Set the Moto 360 face up on a flat surface.
- Place the [iOpener](#) on the face of the device screen.

## Step 8



- Gently slide the opening pick between the screen and the metal casing.
- Work your way around the face of the screen, loosening the adhesive.

## Step 9



- Detach the copper ribbon connecting the motherboard to the display.
  - For reassembly, attach copper ribbon where it is marked.
- ⚠ The copper ribbon is fragile and easily disconnects. Remember where it goes so as to reconnect it properly.

## Step 10



- Slide the display out of the metal casing.



To reassemble your device, follow these instructions in reverse order.