



# Motorola Moto 360 Wrist Strap Replacement

This guide covers changing wrist strap, either because it's broken or for replacement.

Written By: Steven Tan



---

## INTRODUCTION

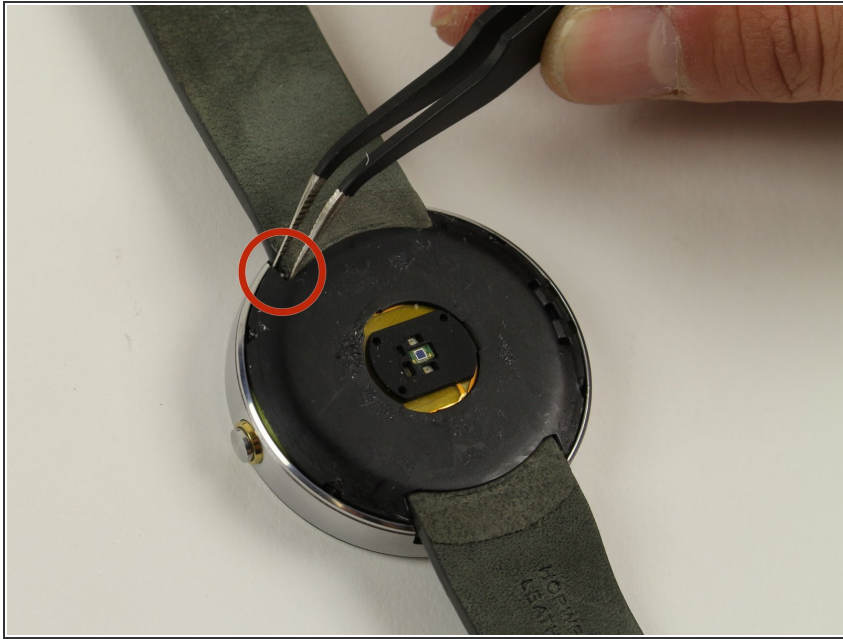
Changing the wrist strap may be easier if the rear cover is taken off first, but removing the rear cover is not required and risks damage to the rear of your device.



### TOOLS:

- [Tweezers](#) (1)
-

## Step 1 — Wrist Strap



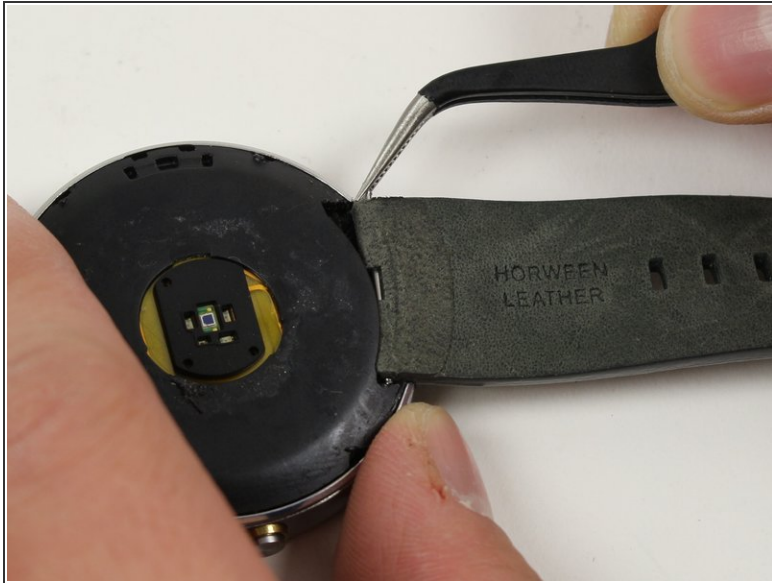
- Locate the spring-loaded pin that attaches the wrist strap to the watch.
- There is a tiny groove on the end of the pin. This is where you will place the tweezers.

## Step 2



- ⚠ Take care not to lose the spring-loaded pin when removing the strap.
- Use the tweezers to compress the spring-loaded pin so the strap can be removed.

### Step 3



- Pull the wristband away from the watch face.

To reassemble your device, follow these instructions in reverse order.