



Motorola Moto E Display Assembly Replacement

This guide will help replace the Moto E's screen if it is shattered or will not turn on.

Written By: Alex Craig



INTRODUCTION

Replacing the touch screen requires you to completely disassemble the device. Use caution when handling the shattered screen.



TOOLS:

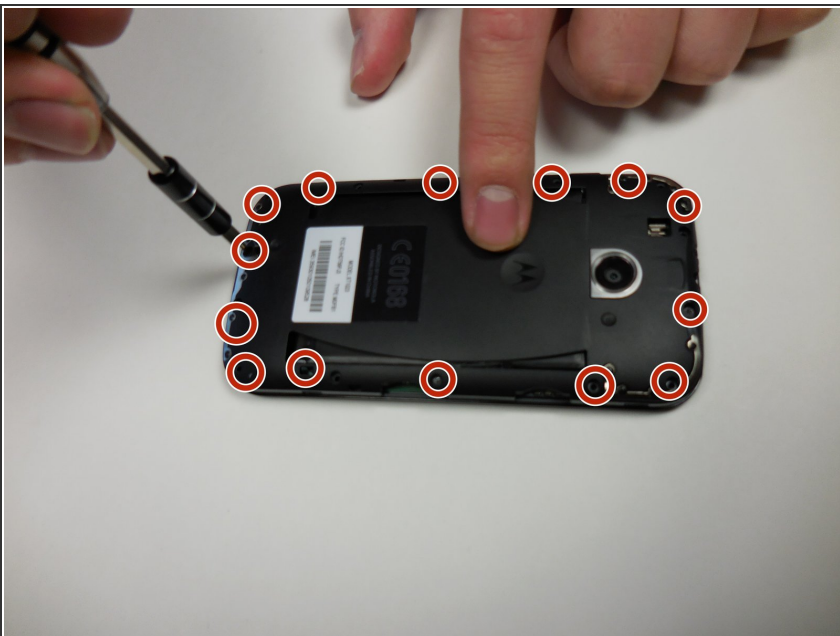
- [Metal Spudger](#) (1)
 - [iFixit Opening Tools](#) (1)
 - [T4 Torx Screwdriver](#) (1)
 - [Suction Handle](#) (1)
 - [Heat Gun](#) (1)
-

Step 1 — Motherboard



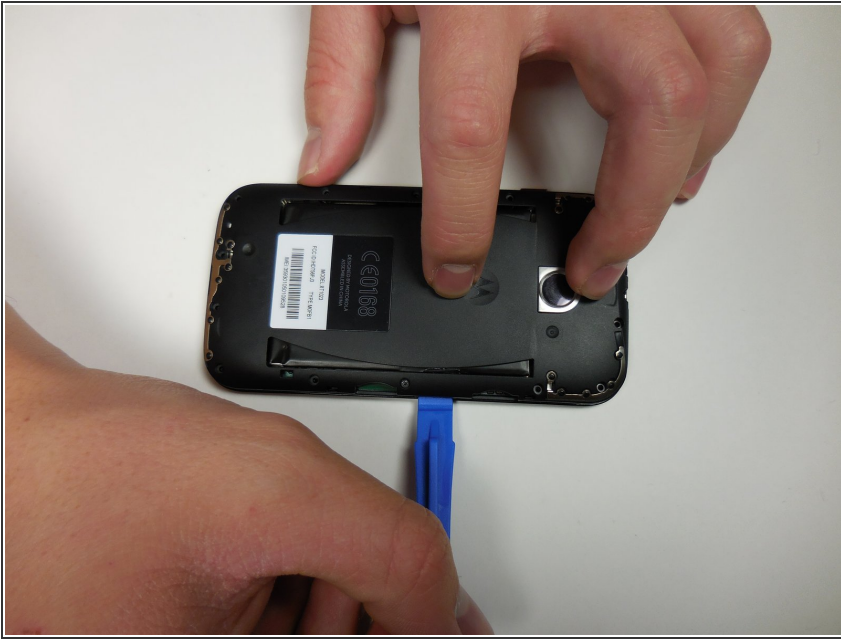
- ⚠ Turn off the device before beginning.
- To remove the back cover, start at one corner and stick the plastic opening tool under the cover and pry it away from the phone.
- With the plastic opening tool, pry all the way around the phone while lifting up on the cover.
- ⓘ You should hear a snapping sound at each corner.

Step 2



- Unscrew the 14- 4mm screws using a T4 Torx driver head.
- ⓘ Working on a magnet board is recommended as the screws are small and can be easily misplaced.

Step 3



- Using the same plastic opening tool as in step 1, once again pry up on the edges of the plastic back cover.
- ⓘ Be sure that all of the screws are out before lifting the cover. The plastic backing is fragile, and it may break.

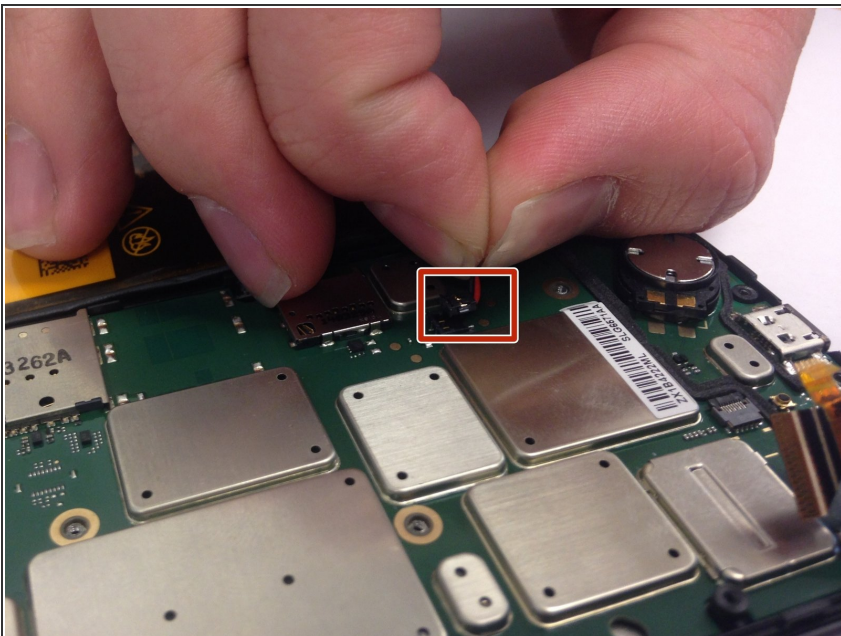
Step 4



- Gently lift the back plate away, exposing the motherboard. The battery will be stuck to the back of the cover, so be careful when lifting it off.

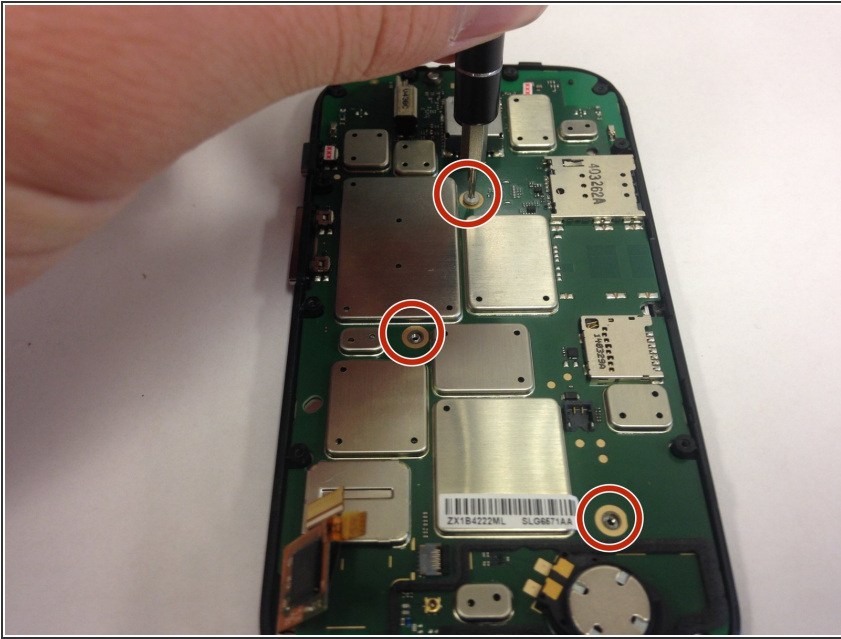
⚠ Do not touch the connections to the battery in the red square on the picture.

Step 5



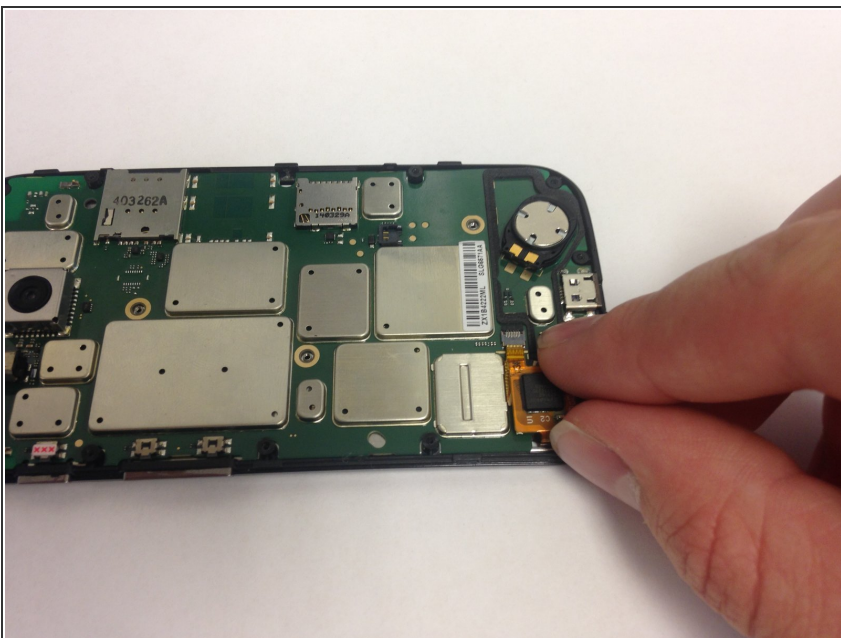
- Gently pull up on the red and black power cable to lift the connector out of the motherboard.
- Move the battery and cover away from the motherboard.

Step 6



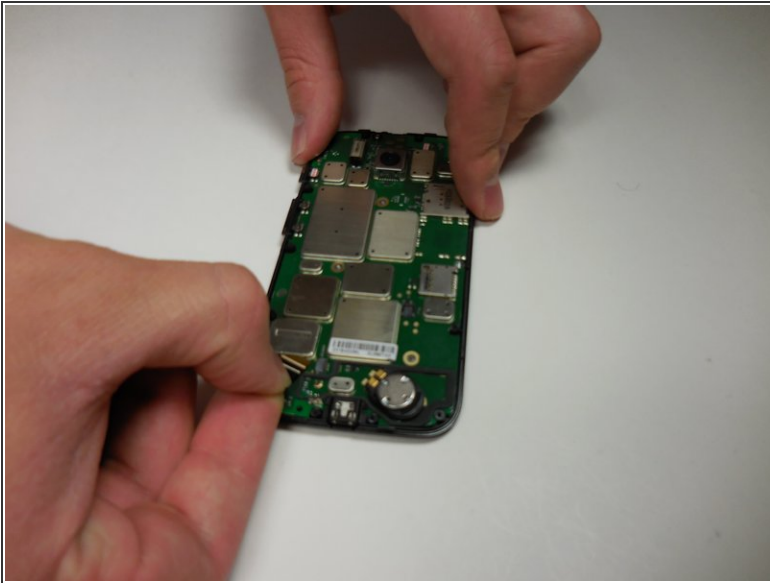
- Unscrew the 3- 1mm screws using the T4 torx driver head.

Step 7



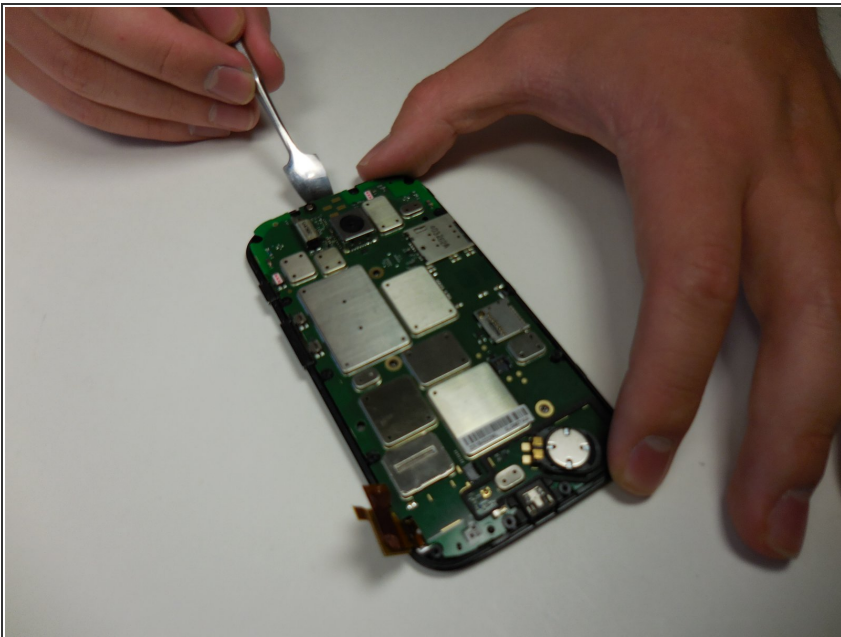
- Lift up on the white plastic mount.
- Pull the orange ribbon cable out gently.

Step 8



- Gently pull the black ribbon cable out.

Step 9



- Using the metal spudger, pry the motherboard away from the screen assembly.

Step 10 — Display Assembly



- Use a heat gun or hairdryer to heat up the edges. This will loosen the glue so the screen can be removed.

⚠ The phone will be extremely hot. Avoid direct contact with metal pieces.

Step 11



- Gently slide the metal spudger underneath the screen and pry it away from the backing.
- Move the metal spudger under the digitizer and along the entire length of the phone to separate the screen from the adhesive.

⚠ If the screen was broken, glass shards may come off of the screen and puncture skin.

Step 12



- Continue to heat and separate until the screen comes completely apart from the rest of the phone.

Step 13



- ⓘ To put the new screen on, press the new screen and digitizer into place, and then reapply heat to adhere the new screen.

To reassemble your device, follow these instructions in reverse order.