



# Motorola Moto E Rear Facing Camera Replacement

This guide will show you how to replace the rear camera assembly if yours is broken or damaged.

Written By: Alex Craig



---

## INTRODUCTION

You will need to remove the outer back plastic cover and the battery connection in order to access the motherboard and camera parts to do the replacement.



### TOOLS:

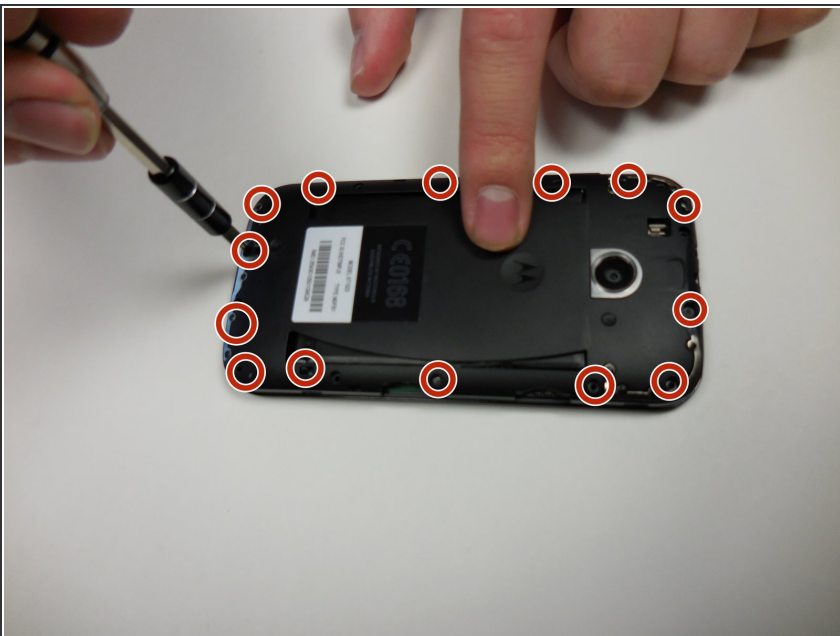
- [Metal Spudger](#) (1)
  - [iFixit Opening Tools](#) (1)
  - [T4 Torx Screwdriver](#) (1)
-

## Step 1 — Motherboard



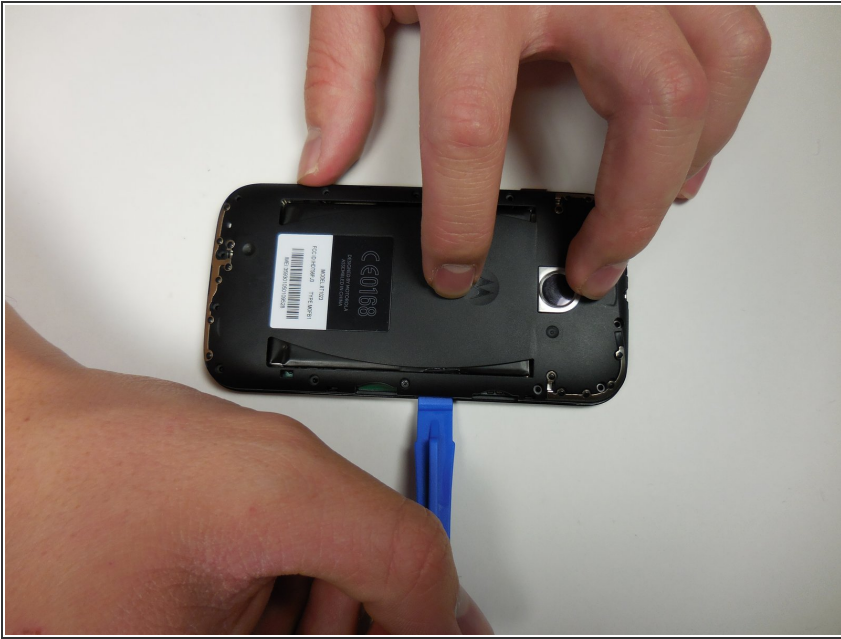
- ⚠ Turn off the device before beginning.
- To remove the back cover, start at one corner and stick the plastic opening tool under the cover and pry it away from the phone.
- With the plastic opening tool, pry all the way around the phone while lifting up on the cover.
- ⓘ You should hear a snapping sound at each corner.

## Step 2



- Unscrew the 14- 4mm screws using a T4 Torx driver head.
- ⓘ Working on a magnet board is recommended as the screws are small and can be easily misplaced.

## Step 3



- Using the same plastic opening tool as in step 1, once again pry up on the edges of the plastic back cover.
- ⓘ Be sure that all of the screws are out before lifting the cover. The plastic backing is fragile, and it may break.

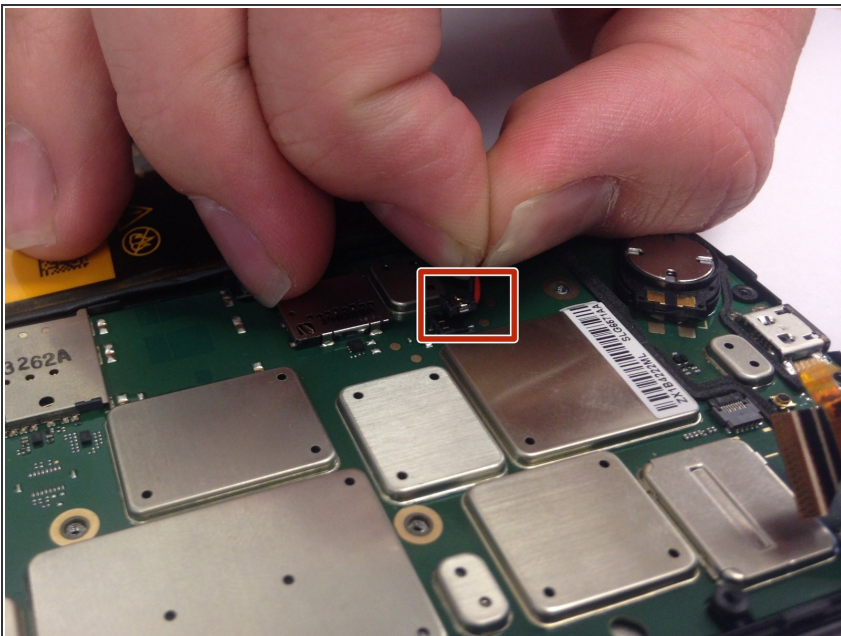
## Step 4



- Gently lift the back plate away, exposing the motherboard. The battery will be stuck to the back of the cover, so be careful when lifting it off.

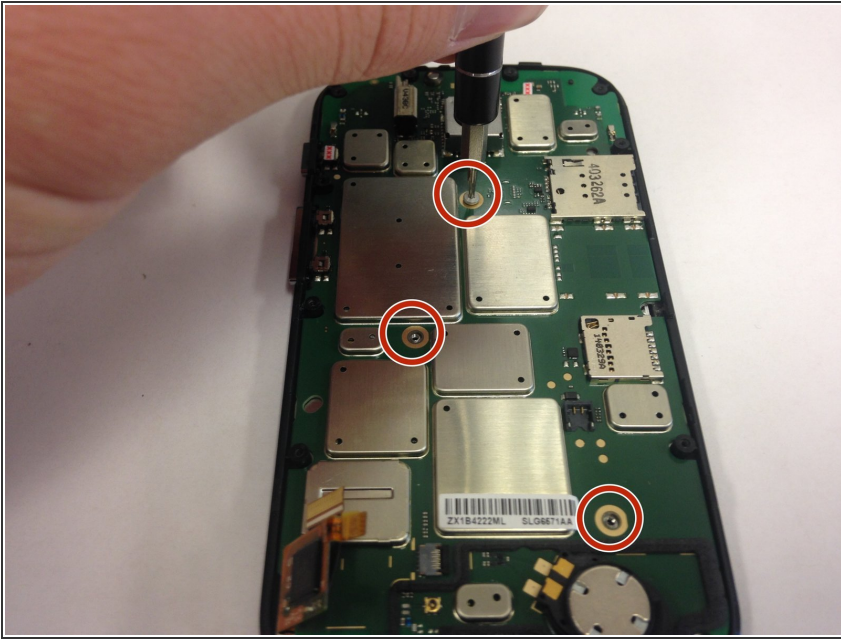
⚠ Do not touch the connections to the battery in the red square on the picture.

## Step 5



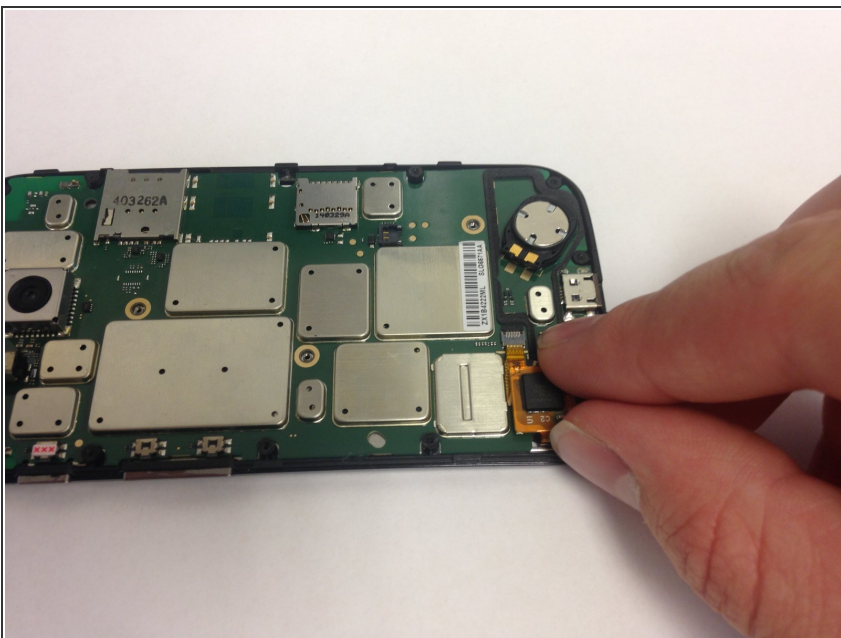
- Gently pull up on the red and black power cable to lift the connector out of the motherboard.
- Move the battery and cover away from the motherboard.

## Step 6



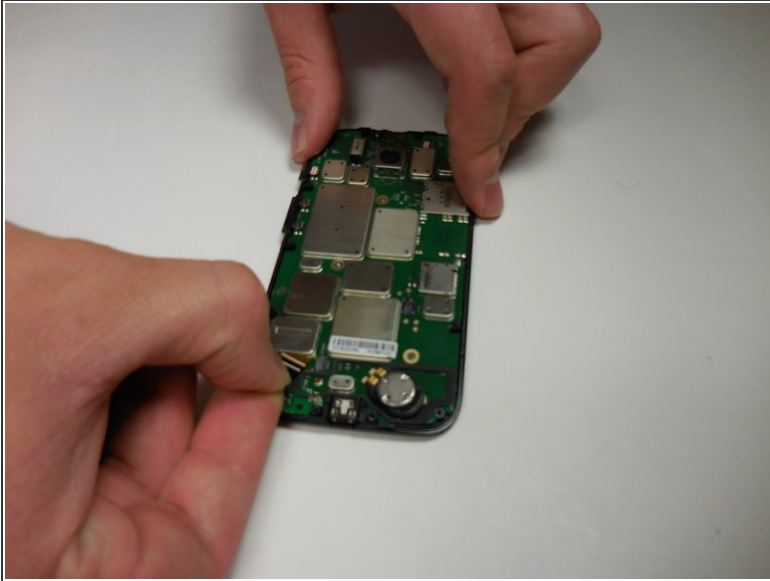
- Unscrew the 3- 1mm screws using the T4 torx driver head.

## Step 7



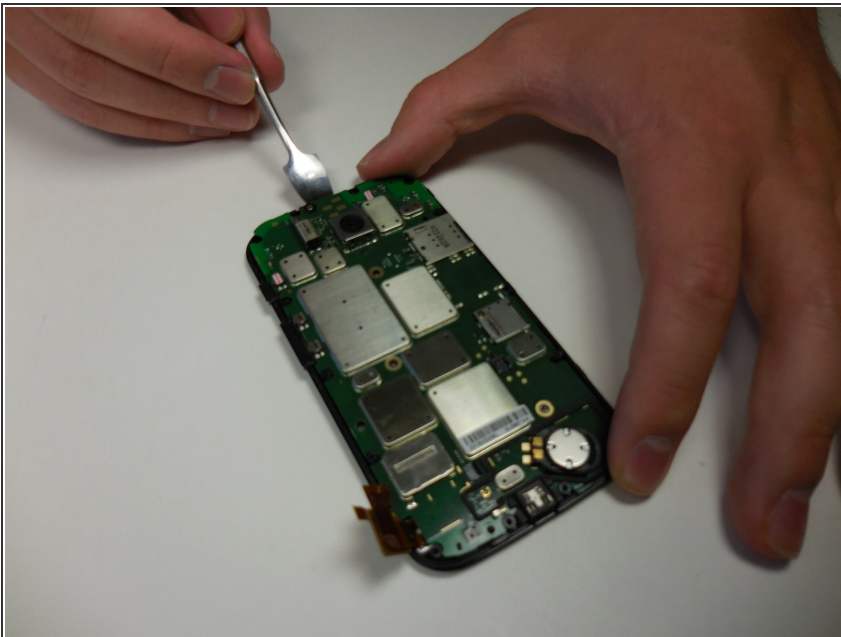
- Lift up on the white plastic mount.
- Pull the orange ribbon cable out gently.

## Step 8



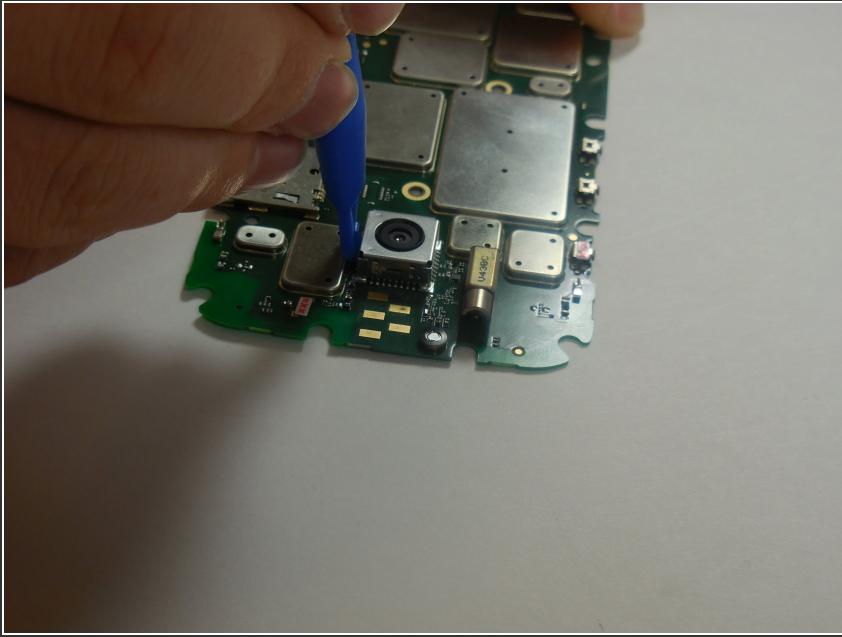
- Gently pull the black ribbon cable out.

## Step 9



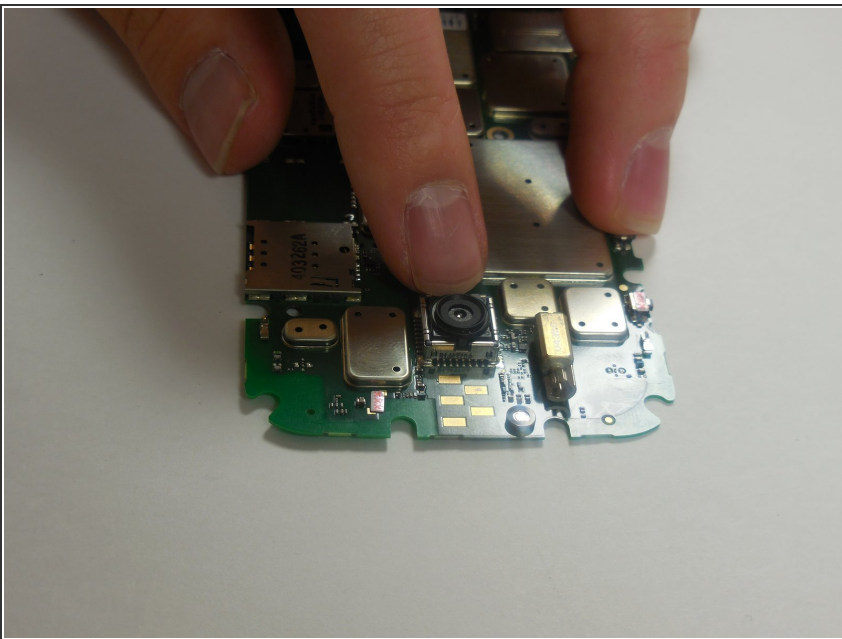
- Using the metal spudger, pry the motherboard away from the screen assembly.

## Step 10 — Rear Facing Camera



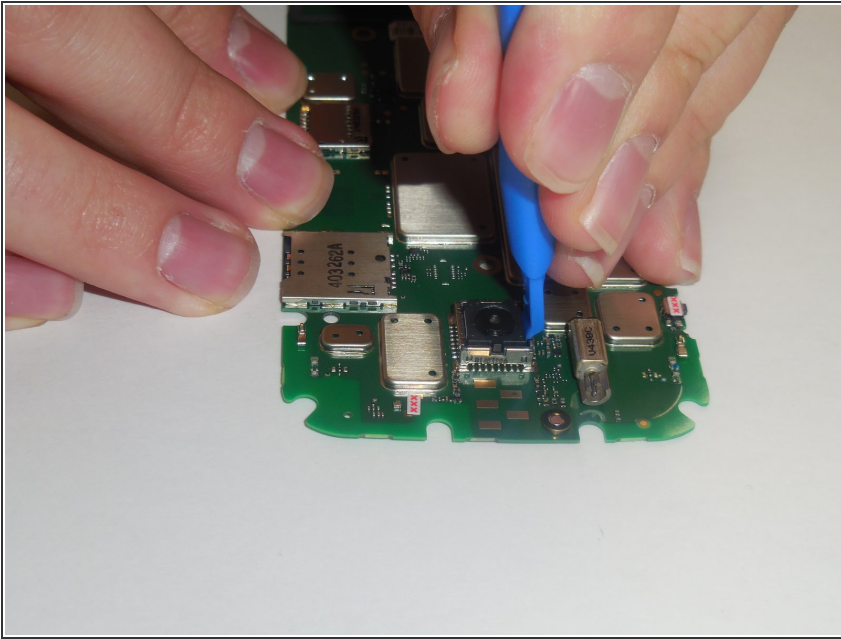
- Use the plastic opening tool to pry the metal housing off.

## Step 11



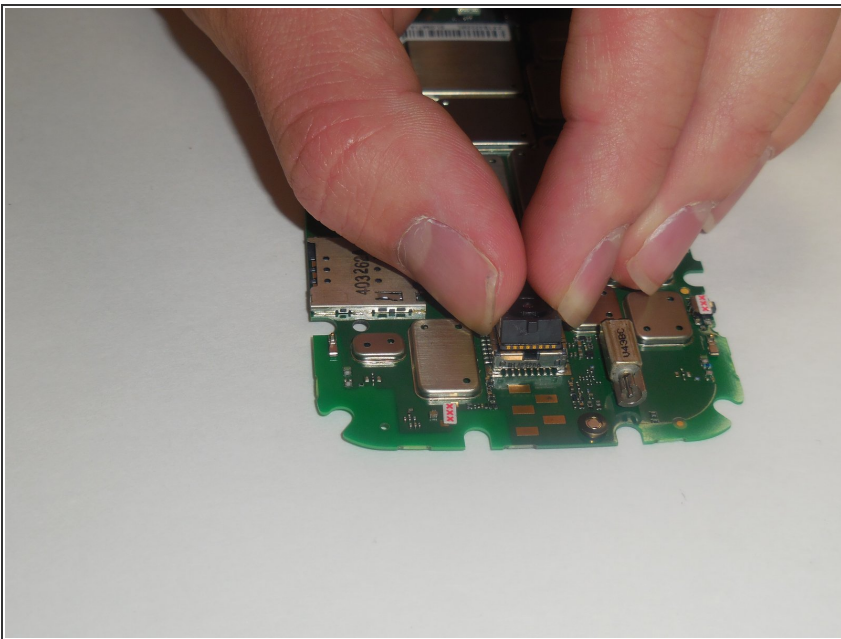
- Remove the rubber cover on the camera by gently lifting it up.

## Step 12



- Use the same plastic opening tool to pry the camera assembly off.
- Use the plastic opening tool on all four sides of the camera several times until it starts to come loose.

## Step 13



- Pull the camera assembly out.
- Place the new camera assembly into the connector and press gently.

To reassemble your device, follow these instructions in reverse order.