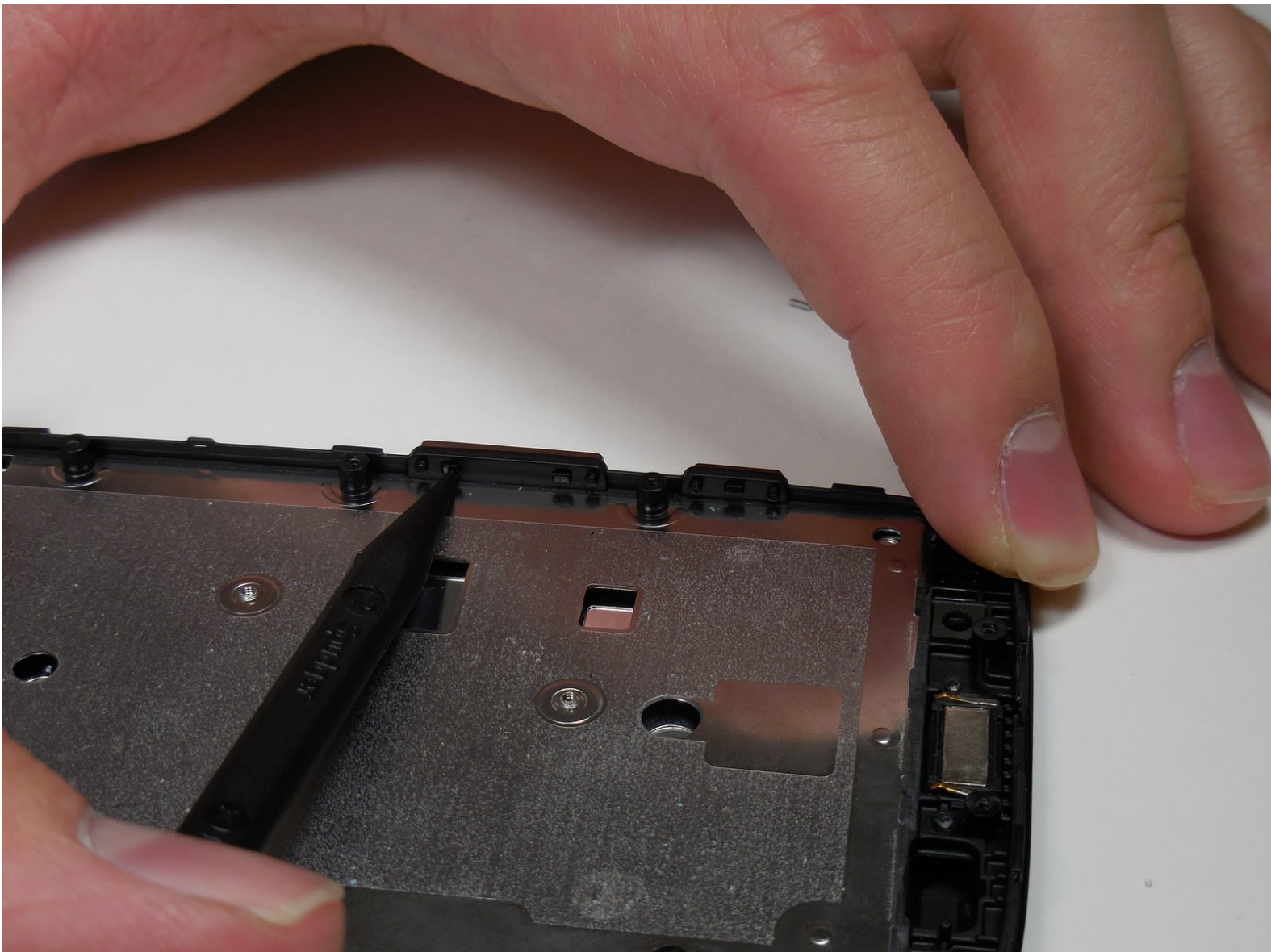




Motorola Moto E Volume and Power Buttons Replacement

This guide will go through the process to remove and replace the volume and power buttons if they have become broken or damaged.

Written By: Alex Craig



This document was generated on 2019-09-19 02:45:19 AM (MST).

INTRODUCTION

In order to access the volume and power buttons for replacement, you need to completely disassemble the device. Pay special attention to the directions the buttons are facing because they only fit one way.



TOOLS:

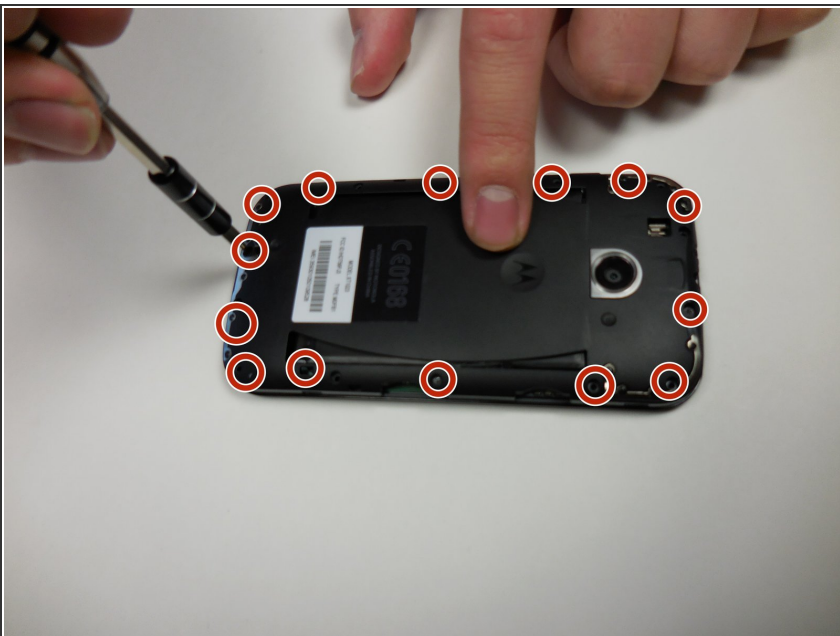
- [Metal Spudger](#) (1)
 - [iFixit Opening Tools](#) (1)
 - [T4 Torx Screwdriver](#) (1)
 - [Spudger](#) (1)
-

Step 1 — Motherboard



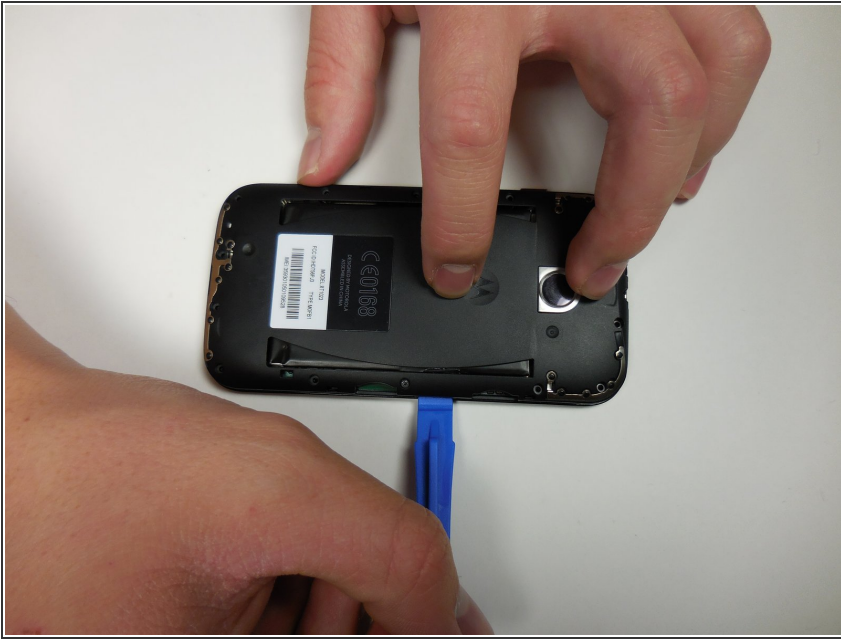
- ⚠ Turn off the device before beginning.
- To remove the back cover, start at one corner and stick the plastic opening tool under the cover and pry it away from the phone.
- With the plastic opening tool, pry all the way around the phone while lifting up on the cover.
- ⓘ You should hear a snapping sound at each corner.

Step 2



- Unscrew the 14- 4mm screws using a T4 Torx driver head.
- ⓘ Working on a magnet board is recommended as the screws are small and can be easily misplaced.

Step 3



- Using the same plastic opening tool as in step 1, once again pry up on the edges of the plastic back cover.
- ⓘ Be sure that all of the screws are out before lifting the cover. The plastic backing is fragile, and it may break.

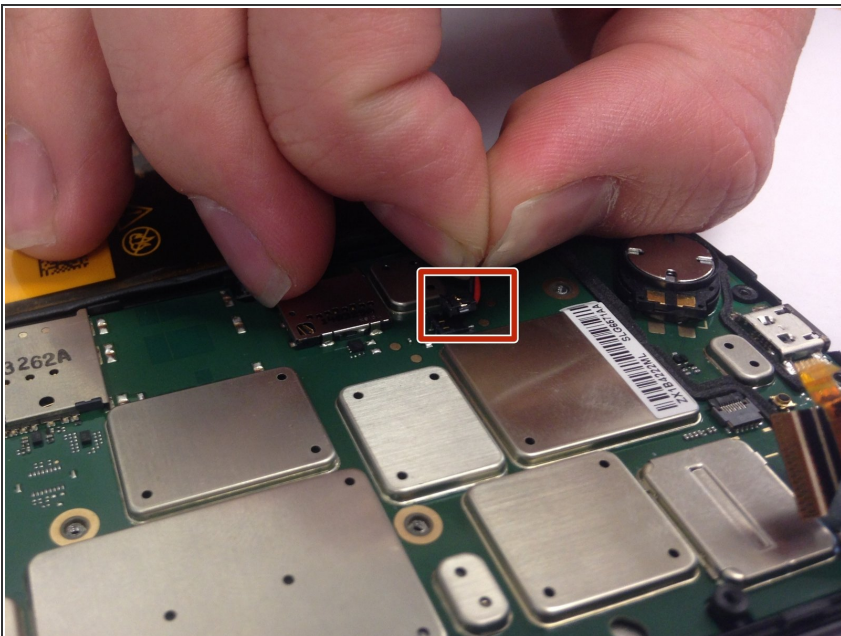
Step 4



- Gently lift the back plate away, exposing the motherboard. The battery will be stuck to the back of the cover, so be careful when lifting it off.

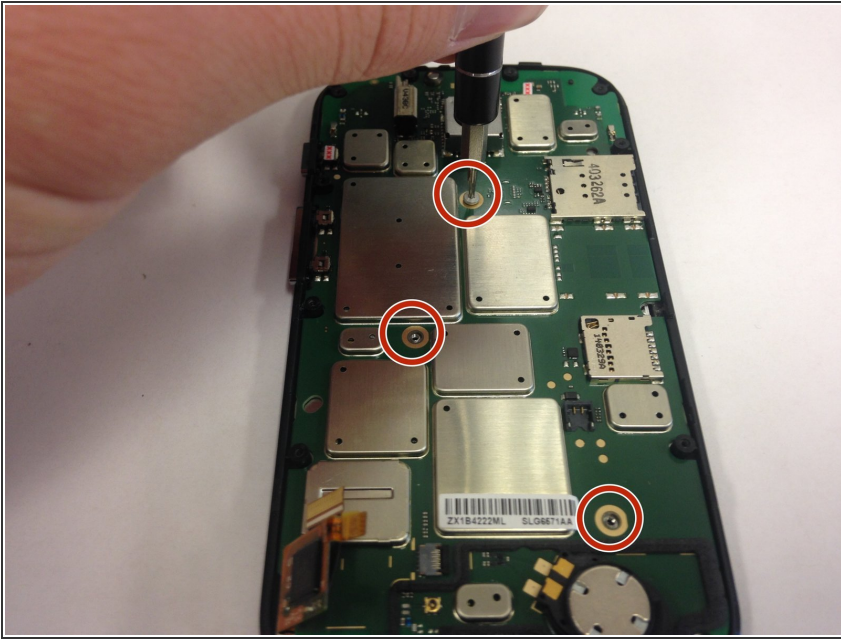
⚠ Do not touch the connections to the battery in the red square on the picture.

Step 5



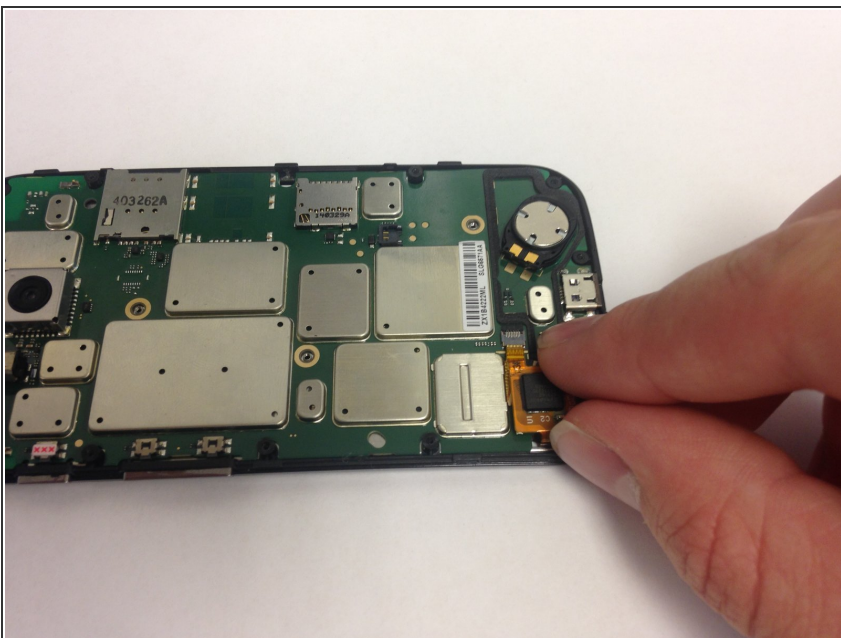
- Gently pull up on the red and black power cable to lift the connector out of the motherboard.
- Move the battery and cover away from the motherboard.

Step 6



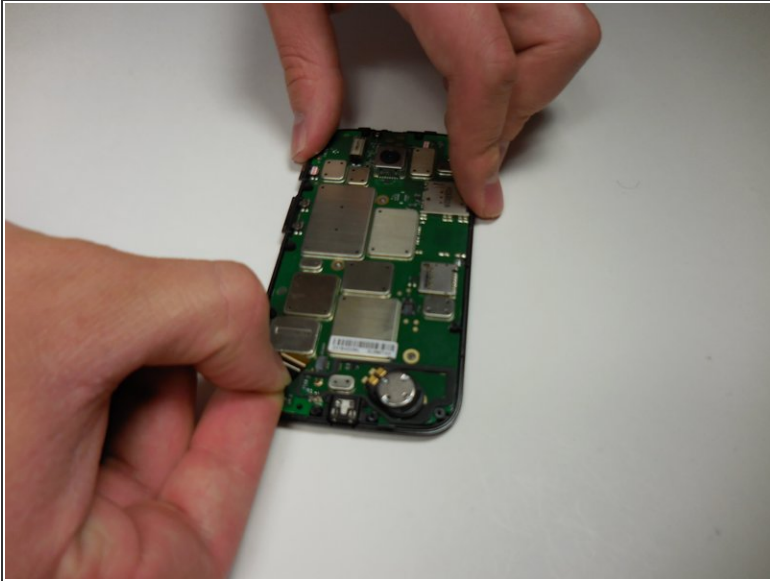
- Unscrew the 3- 1mm screws using the T4 torx driver head.

Step 7



- Lift up on the white plastic mount.
- Pull the orange ribbon cable out gently.

Step 8



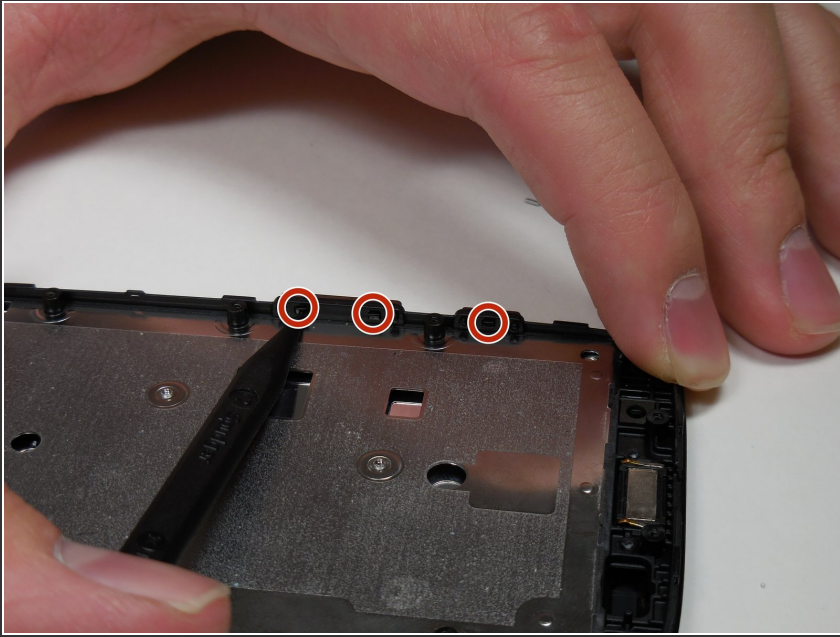
- Gently pull the black ribbon cable out.

Step 9



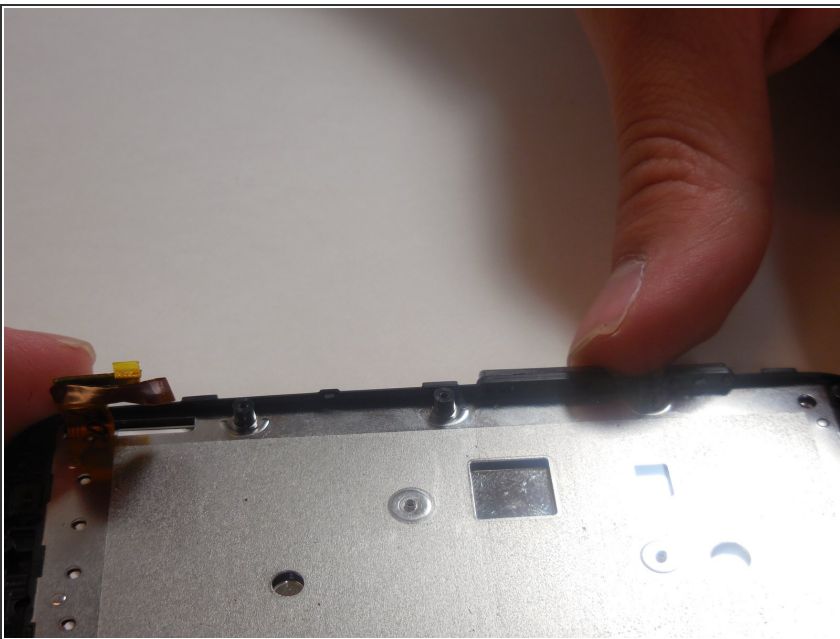
- Using the metal spudger, pry the motherboard away from the screen assembly.

Step 10 — Volume and Power Buttons



- Locate the 3 tabs on the backs of the volume and power buttons.
- Press firmly on the tabs using the plastic spudger until they pop out.

Step 11



- Press the new buttons into the assemblies.
- ⓘ Be sure the new buttons are facing the correct direction. The outside of the button should match the shape of the hole.

To reassemble your device, follow these instructions in reverse order.