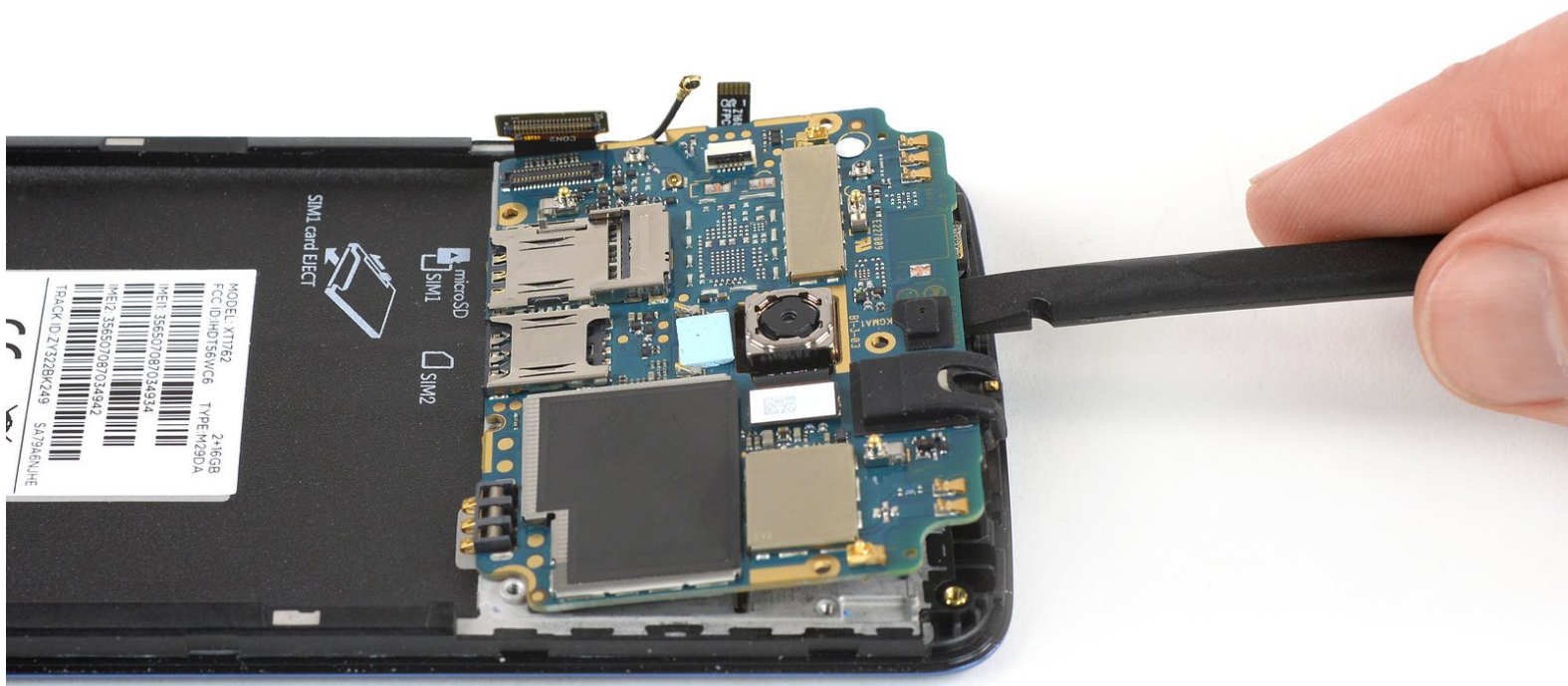




Motorola Moto E4 (XT1762) Motherboard Assembly Replacement

This guide shows you how to replace the motherboard assembly of the Motorola Moto E4 (XT1762).

Written By: Dominik Schnabelrauch



INTRODUCTION

Use this guide to replace the motherboard assembly of your Motorola Moto E4 (XT1762).

TOOLS:

- [Spudger](#) (1)
 - [iFixit Opening Picks set of 6](#) (1)
 - [Phillips #00 Screwdriver](#) (1)
 - [Tweezers](#) (1)
-

Step 1 — Back Cover



 Power off your phone before beginning disassembly.

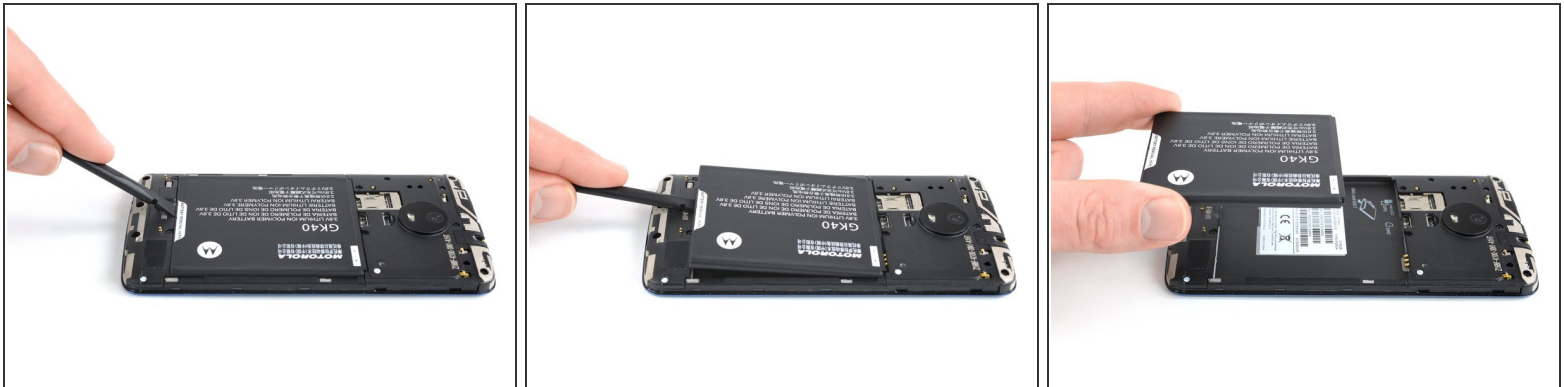
- Insert a fingernail, or spudger, into the notch on the bottom right corner to start separating the phone unit from the back cover.
- Move to the bottom left corner to pry the phone out of the back cover.

Step 2



- Lift the phone out of the back cover.

Step 3 — Battery



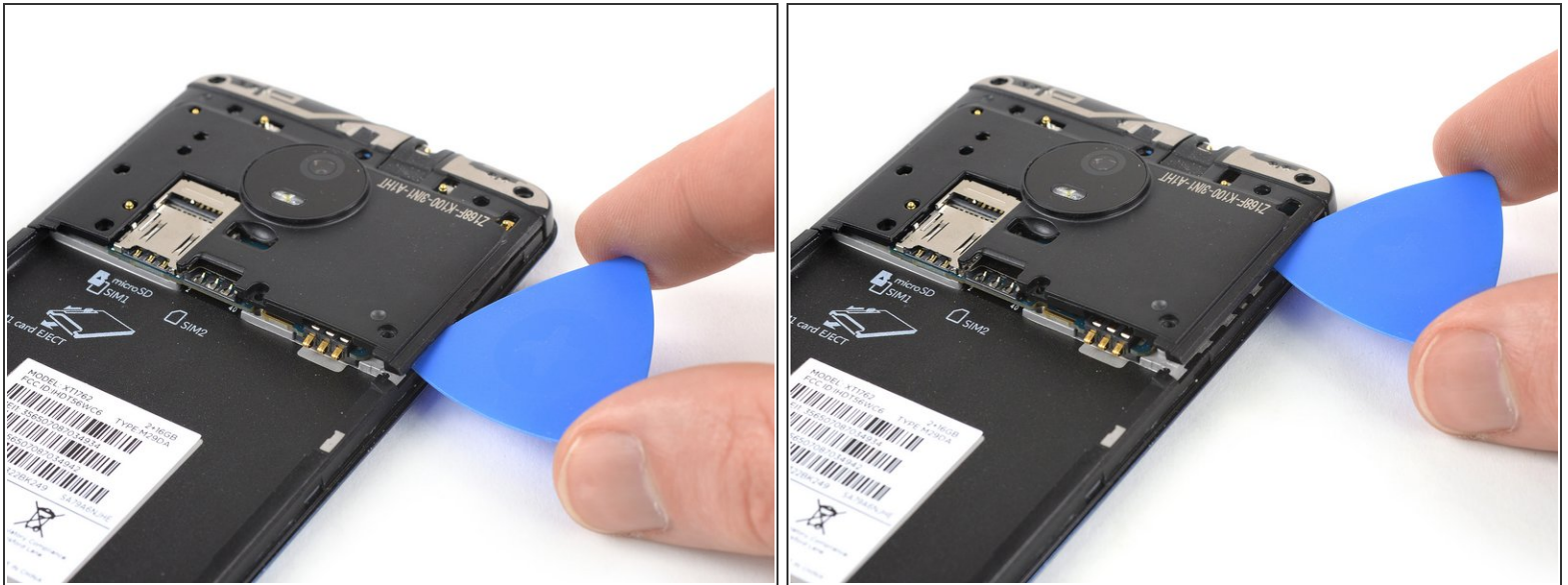
- Use a fingernail or spudger to pry at the notch at the bottom end of the battery.
- Lever the battery out of its recess and remove it.

Step 4 — Motherboard Cover



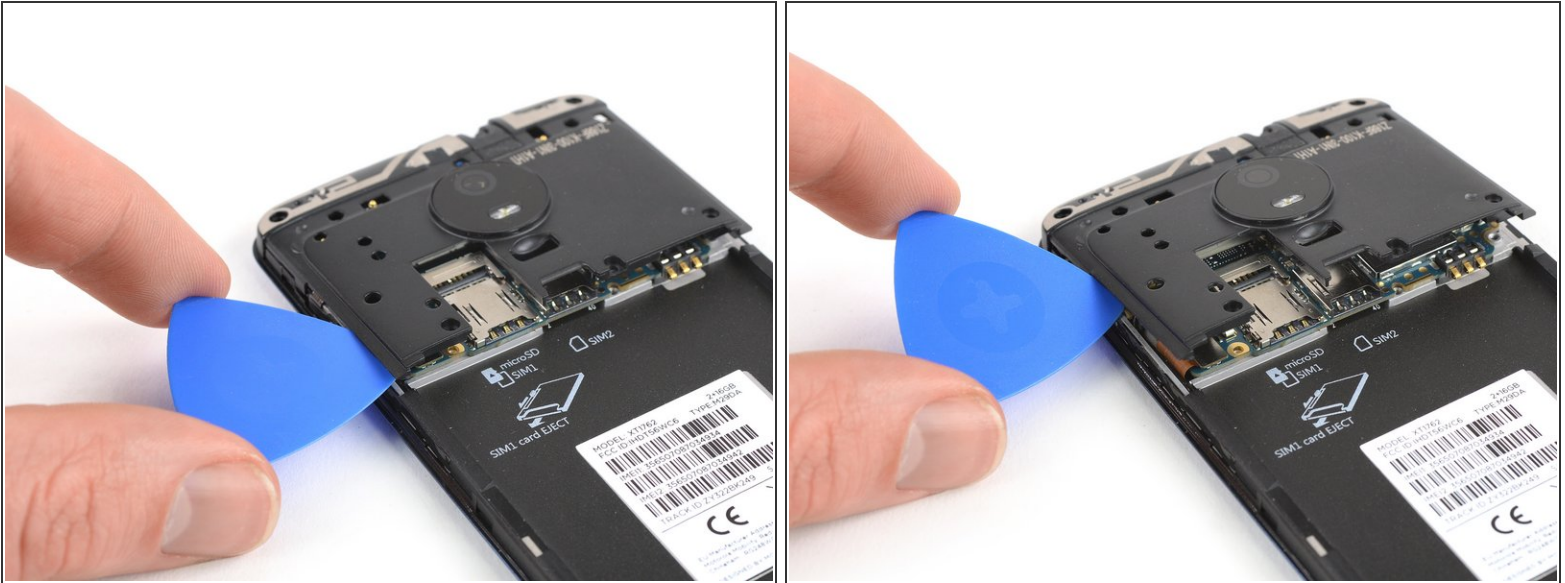
- Remove the seven 3.3 mm Phillips #00 screws.

Step 5



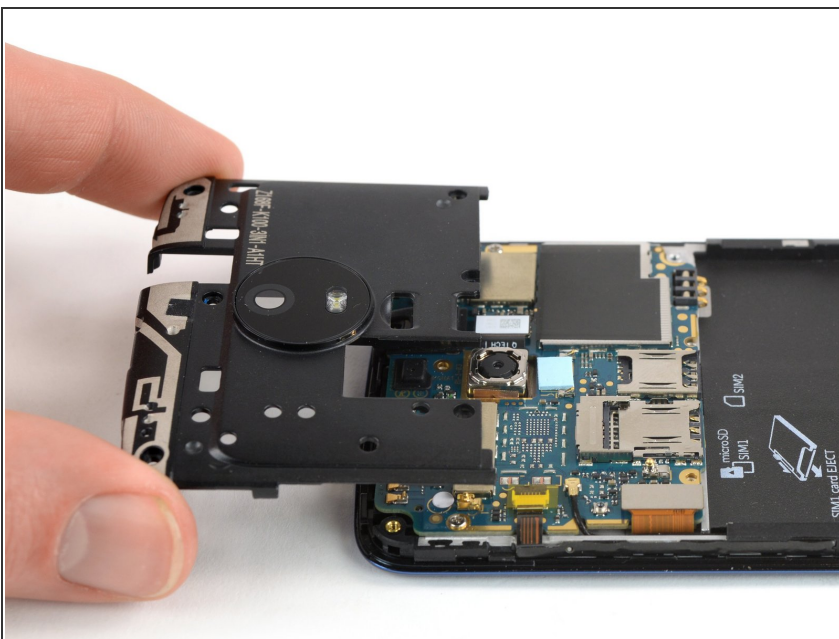
- Insert an opening pick between the cover and the motherboard at the bottom right corner.
- Slide the opening pick upwards to open the plastic clips.

Step 6



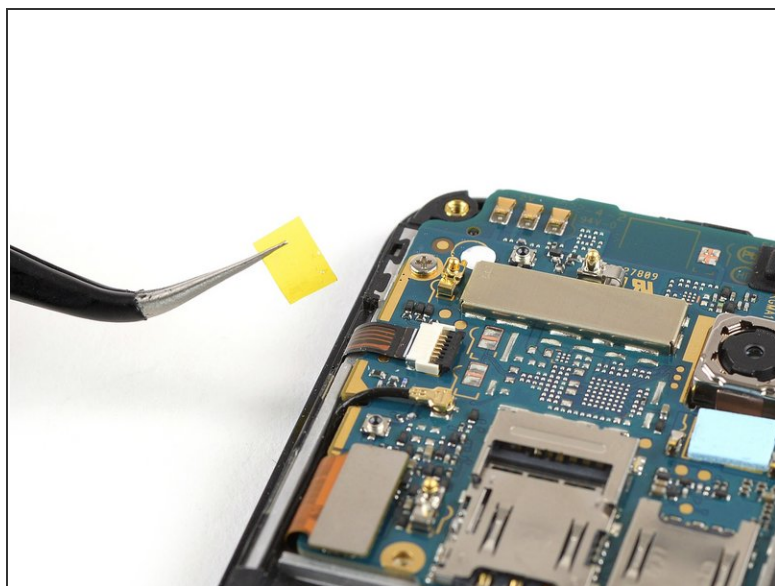
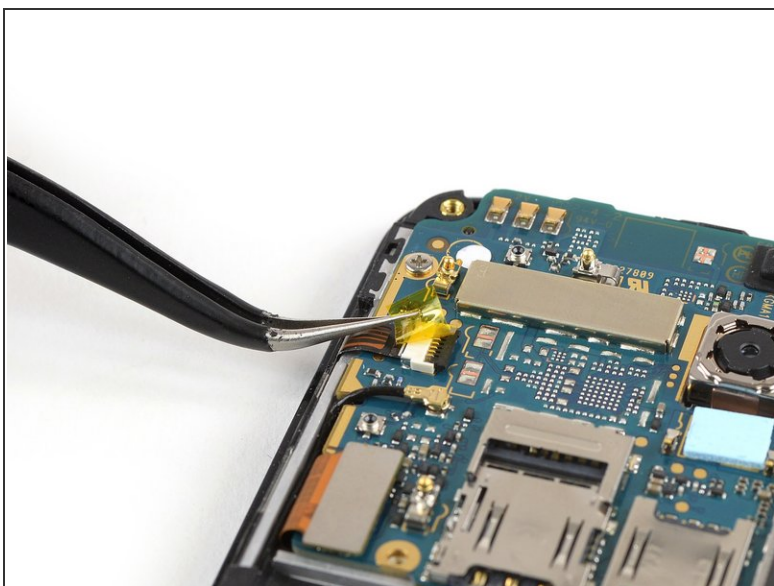
- Insert an opening pick between the cover and the motherboard at the bottom left corner.
- Slide the opening pick upwards to open the plastic clips.
- Pry up the motherboard cover by twisting the opening pick.

Step 7



- Remove the motherboard cover.

Step 8 — Motherboard Assembly



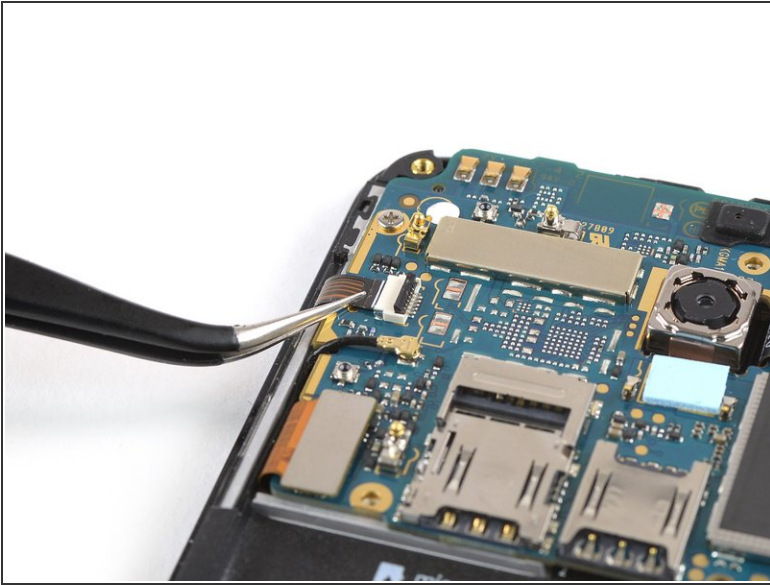
- Use a pair of tweezers to peel off the yellow tape of the ZIF connector located on the left of the motherboard.

Step 9



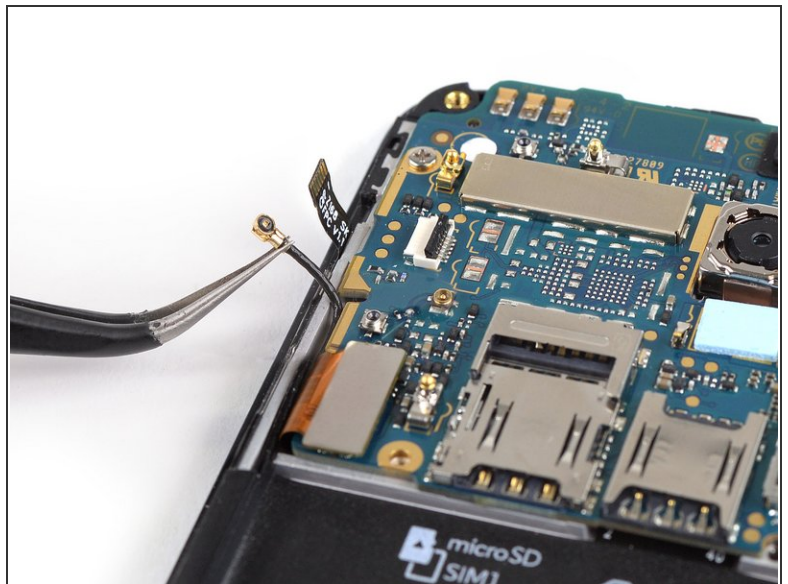
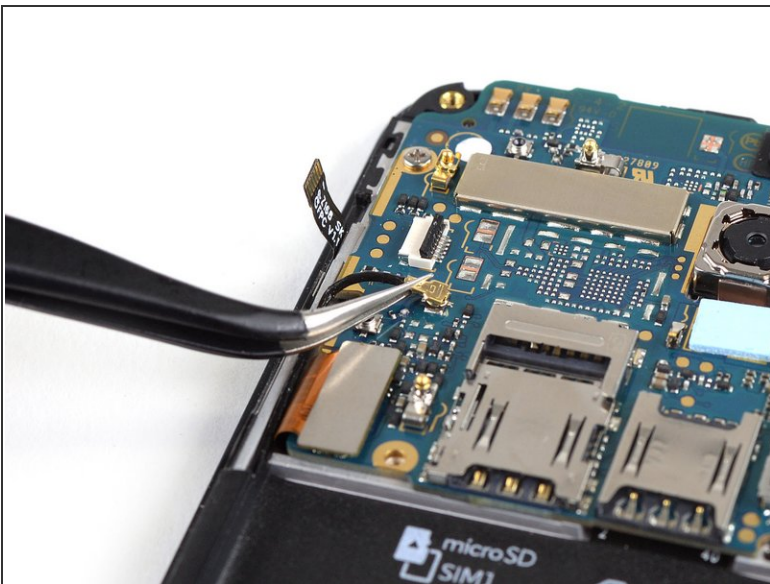
- Use the edge of a spudger to open the black flap of the ZIF connector.

Step 10



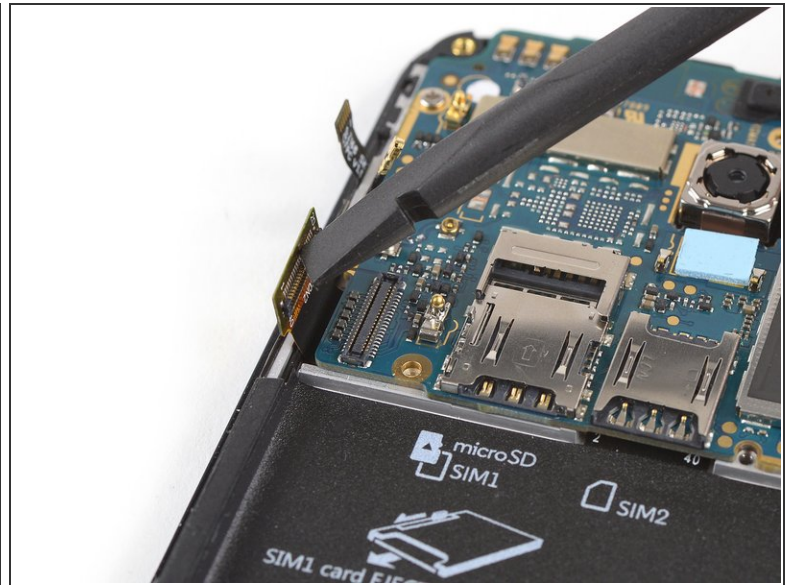
- Slide the volume button flex cable out of the ZIF connector to disconnect it.

Step 11



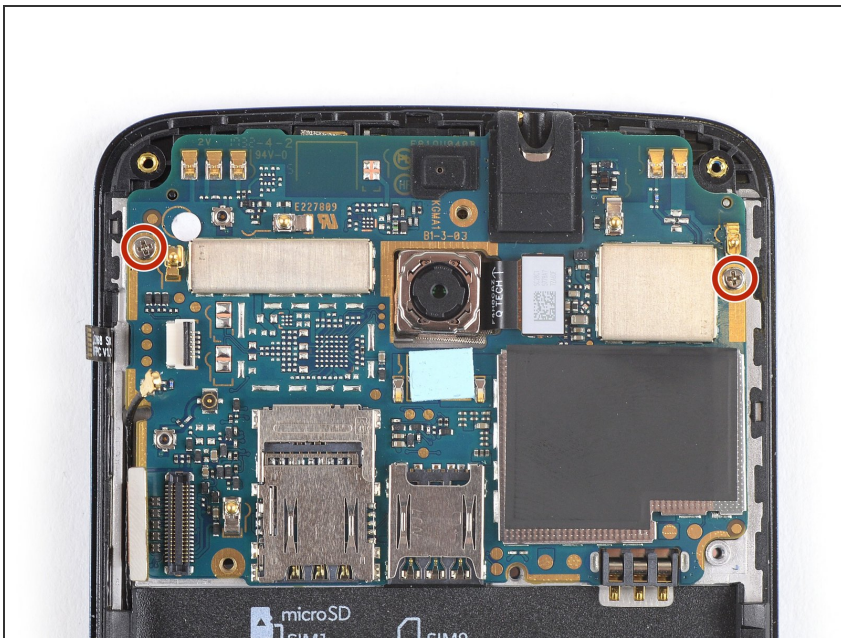
- Use a pair of tweezers to pry up and disconnect the antenna cable located on the left of the motherboard.
- Fold the antenna cable out of the way.

Step 12



- Use the edge of a spudger to pry up and disconnect the display flex cable located on the bottom left of the motherboard.

Step 13



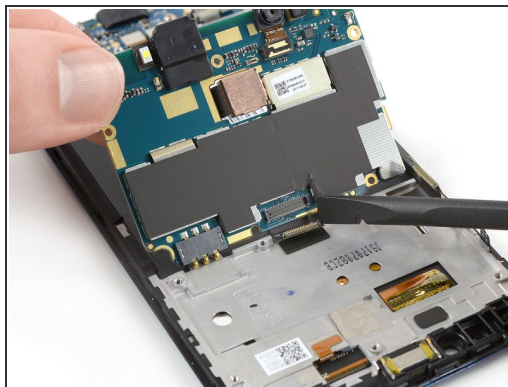
- Remove the two 2.9 mm long Phillips #00 screws securing the motherboard.

Step 14



- ⚠ Don't try to remove the motherboard all the way yet. The interconnect flex cable is still connected to its rear side.
- Use a spudger to carefully lift the motherboard from the top and fold it towards the battery compartment.
- ⚠ Be careful not to damage any components underneath the motherboard.

Step 15



- Use the edge of a spudger to disconnect the interconnect cable from the motherboard.
- Remove the motherboard.

To reassemble your device, follow these instructions in reverse order.