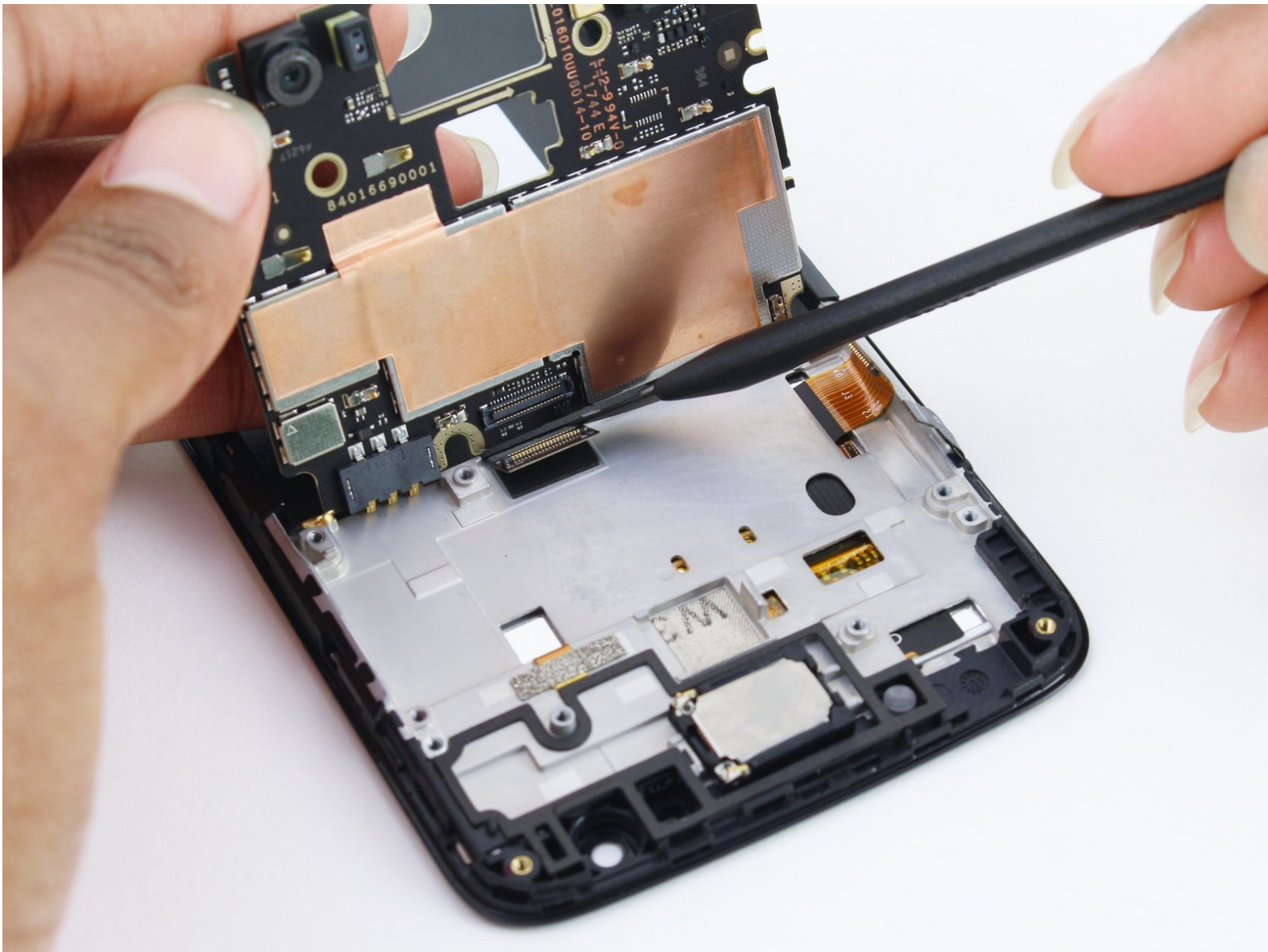




# Motorola Moto E4 Motherboard Replacement

This guide shows how to remove the Moto E4 motherboard.

Written By: Nate Tjepkema



# INTRODUCTION

Use this guide to remove or replace the Moto E4 motherboard.



## TOOLS:

- [iFixit Opening Tools](#) (1)
  - [Spudger](#) (1)
  - [Phillips #00 Screwdriver](#) (1)
-

## Step 1 — Remove the rear cover



 Before removing the battery, power off your Moto E4.

- Remove the plastic cover by gently prying it up from the notch at the bottom right corner of the phone.
- With the phone face down, lift the battery up by the labeled tab and remove it from the device.

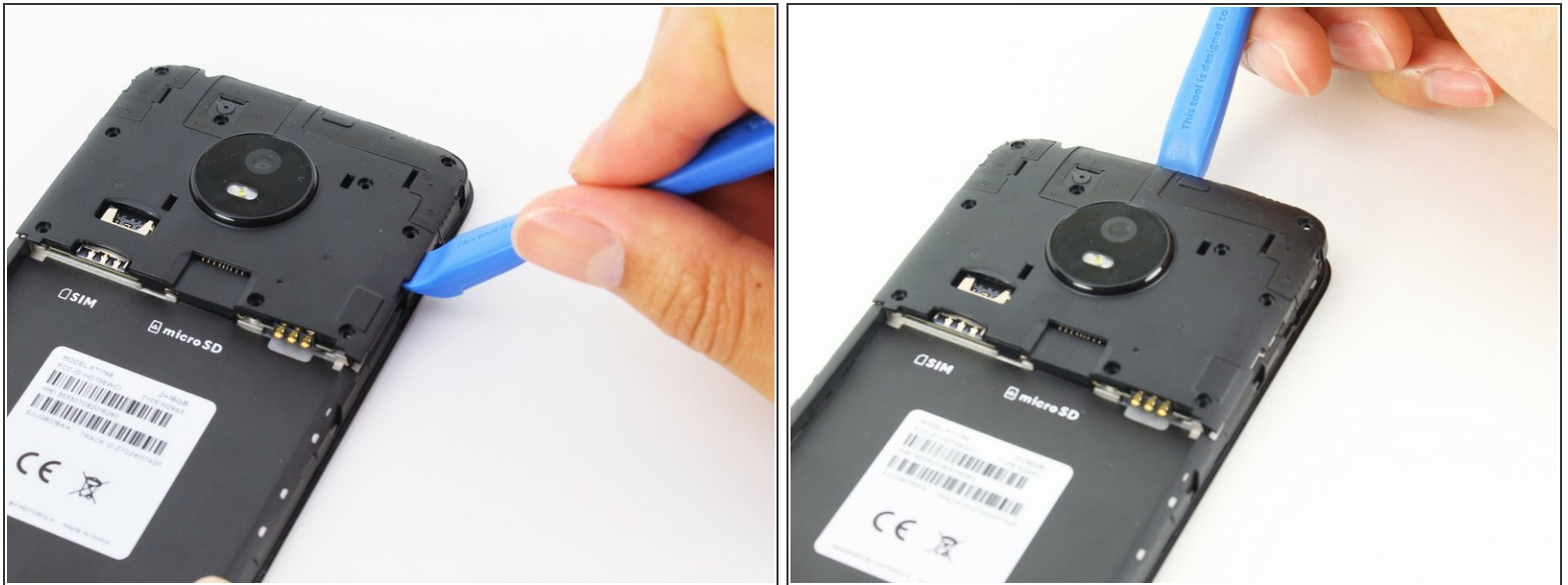
## Step 2 — Remove the motherboard cover



**i** The battery is shown inserted in the Moto E4, but it should be removed before performing the following step.

- Remove all nine 4 mm Phillips screws from the top plastic cover.

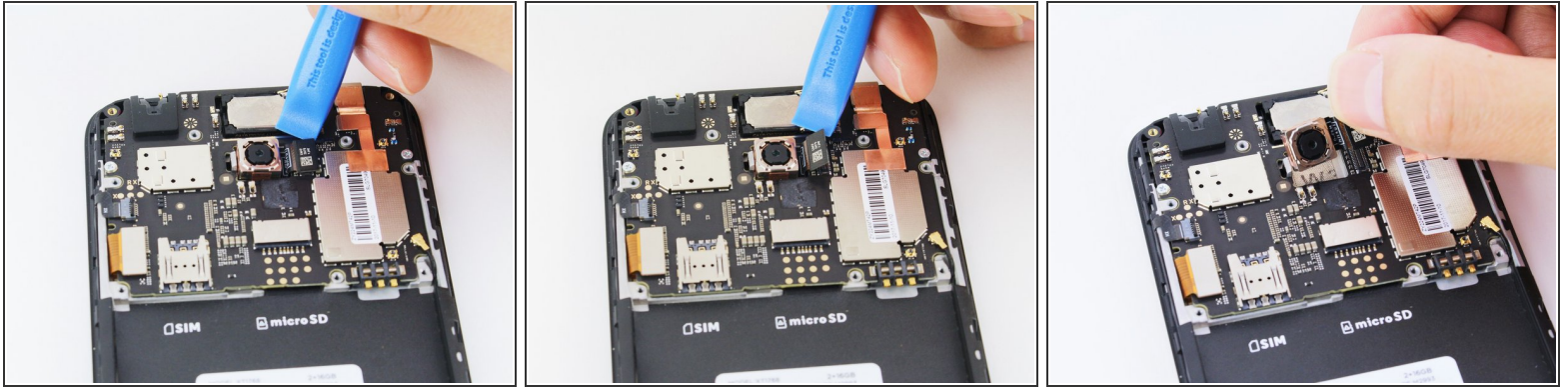
## Step 3



- Gently pry up the plastic cover using a plastic opening tool.
  - Start by inserting the tool under the cover's right edge, as indicated by the first picture.
  - Pry up, and continue prying around the rest of the cover in a counter clockwise path.
- Once loose, remove the plastic cover from the phone.



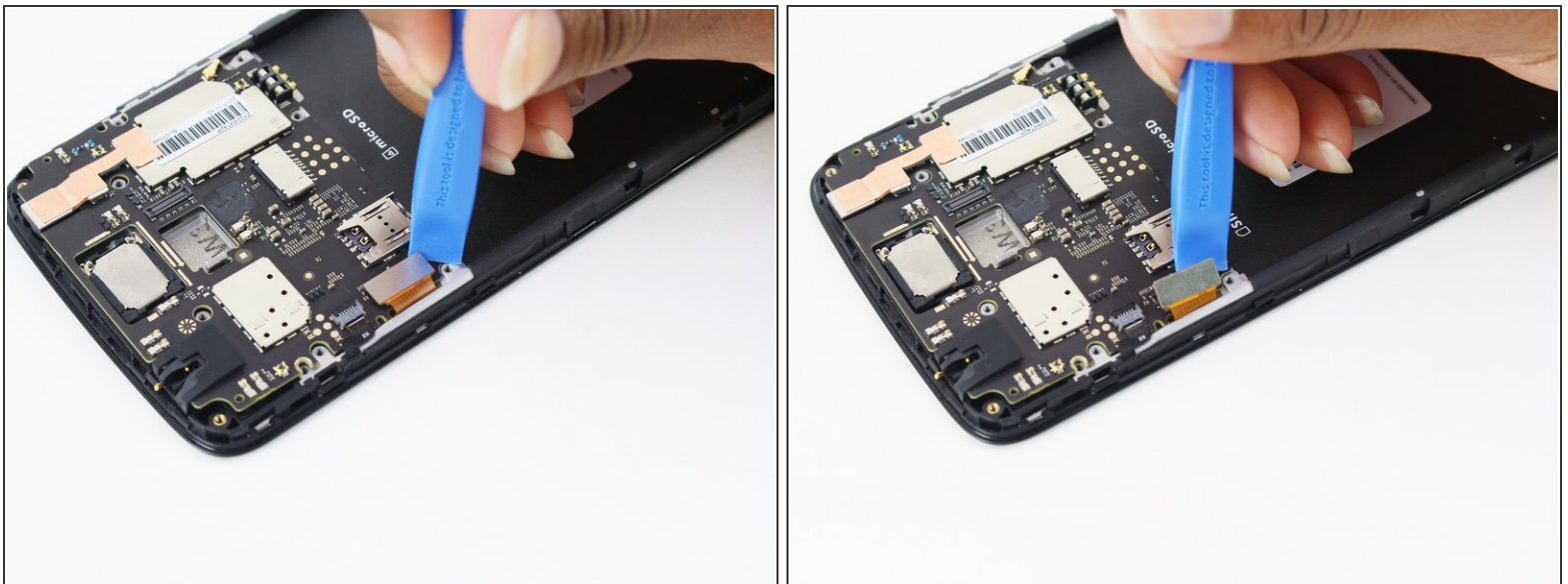
## Step 4



**i** This step can be skipped if you are only removing the front-facing camera. For all other repairs, continue as follows.

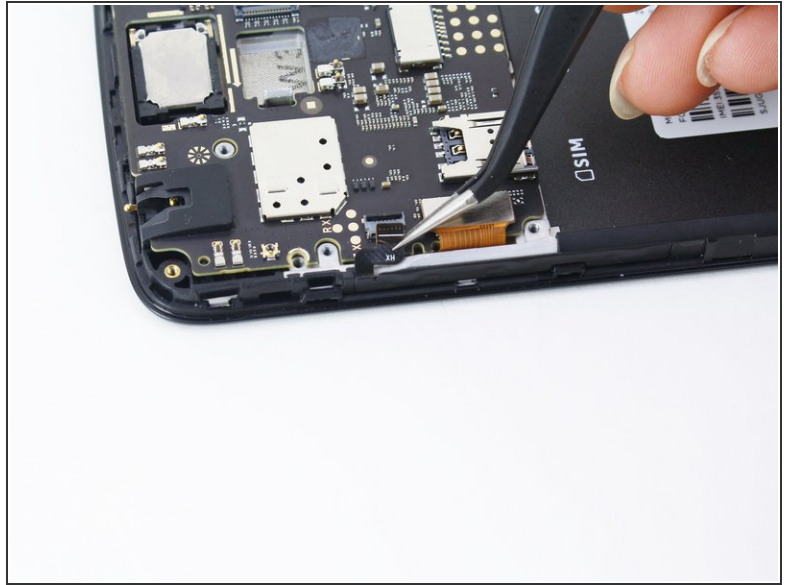
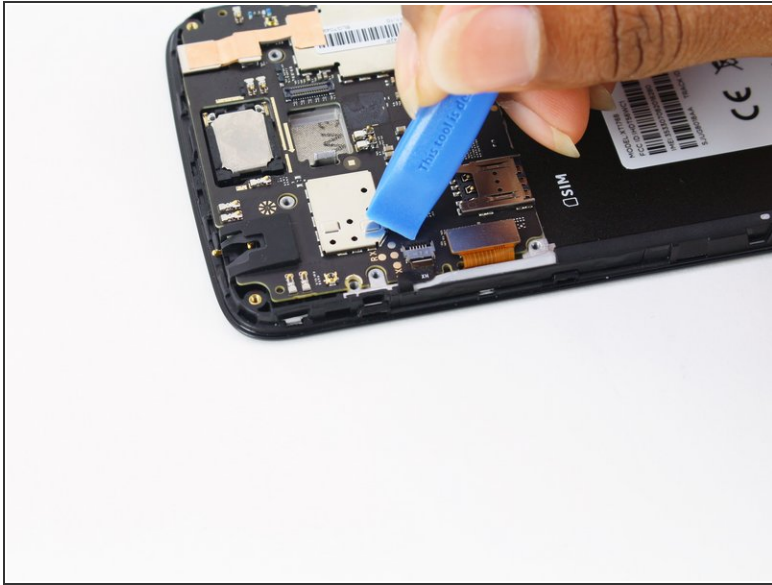
- Disconnect the rear-facing camera by prying straight up on the connector on its right side.
- Remove the rear-facing camera from the Moto E4.

## Step 5 — Remove the motherboard



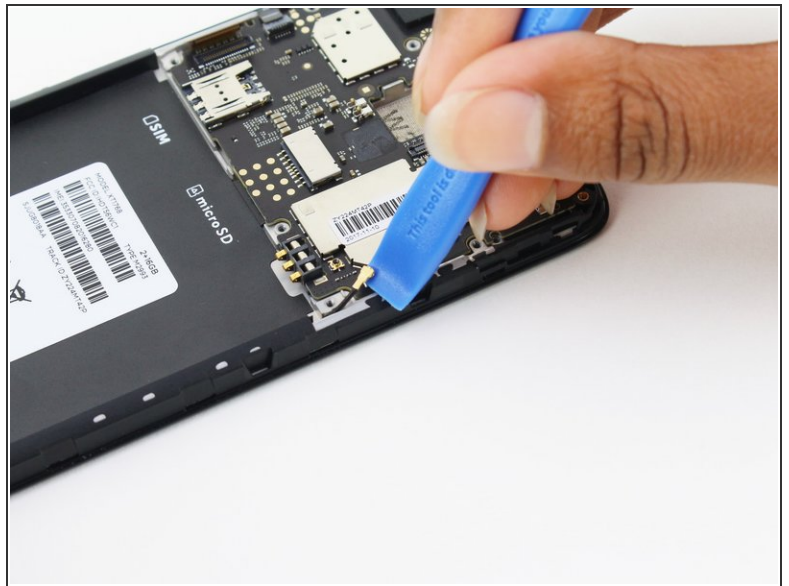
- Disconnect the display cable by prying it straight up from the motherboard.

## Step 6



- Unlock the [ZIF connector](#) for the side buttons by prying up the black locking flap opposite the cable.
- Pull the cable carefully toward the edge of the phone to slide it from its socket.

## Step 7



- Disconnect the [antenna cable](#) by sliding a plastic pry tool or fine tweezers under the wire close to its socket, and then prying straight up.

## Step 8



- Remove the two 3.1 mm long Phillips screws securing the motherboard.



## Step 9



- Grab the top edge of the motherboard and lift to hinge it upward (but don't try to fully remove it). While doing so, keep all other cables clear of the motherboard.
- Use a spudger or other fine-tip pry tool to pry off and disconnect the last remaining ribbon cable on the underside of the motherboard.
- Remove the Moto E4 motherboard.

To reassemble your device, follow these instructions in reverse order.