



# Motorola Moto E4 Plus Battery Disconnect

prereq battery disconnect

Written By: Dominik Schnabelrauch



---

# INTRODUCTION

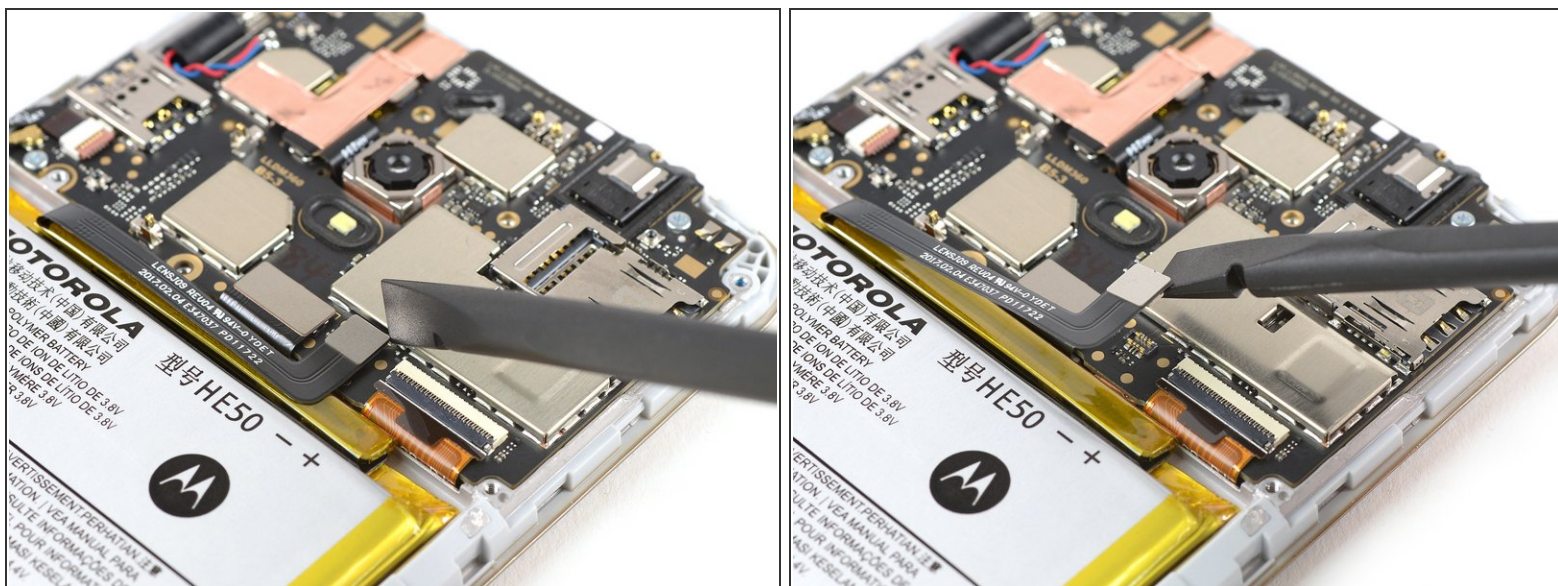
prereq battery disconnect



## TOOLS:

- [Spudger](#) (1)
-

## Step 1 — Battery Disconnect



- Use the edge of a spudger to pry up and disconnect the battery flex cable from the motherboard.

To reassemble your device, follow these instructions in reverse order.