



Motorola Moto E4 Plus Battery Replacement

This guide shows you how to remove and replace the battery in the Motorola Moto E4 Plus (XT1771).

Written By: Dominik Schnabelrauch



INTRODUCTION

Use this guide to remove and replace the battery in the Motorola Moto E4 Plus (XT1771).

Before disassembling your phone, discharge the battery below 25%. [If your battery is swollen](#), do not heat your phone. Swollen batteries can be very dangerous, so wear eye protection and exercise due caution, or take it to a professional if you're not sure how to proceed.

You'll need replacement adhesive to reattach components when reassembling the device.



TOOLS:

- [Phillips #00 Screwdriver](#) (1)
- [Spudger](#) (1)
- [iFixit Opening Picks set of 6](#) (1)
- [ESD Safe Tweezers Blunt Nose](#) (1)



PARTS:

- [Moto E4 Plus Replacement Battery](#) (1)
- [Moto E4 Plus Battery Adhesive Strips](#) (1)

Step 1 — Remove the back cover



 Power off your phone before beginning disassembly.

- Insert the edge of the spudger into the notch on the bottom right corner of the phone.
- Twist the spudger to start releasing the back cover from the phone.
- Slide the spudger along the bottom edge to separate the back cover from the phone.

Step 2



- Lift the phone unit out of the back cover.

Step 3 — Midframe



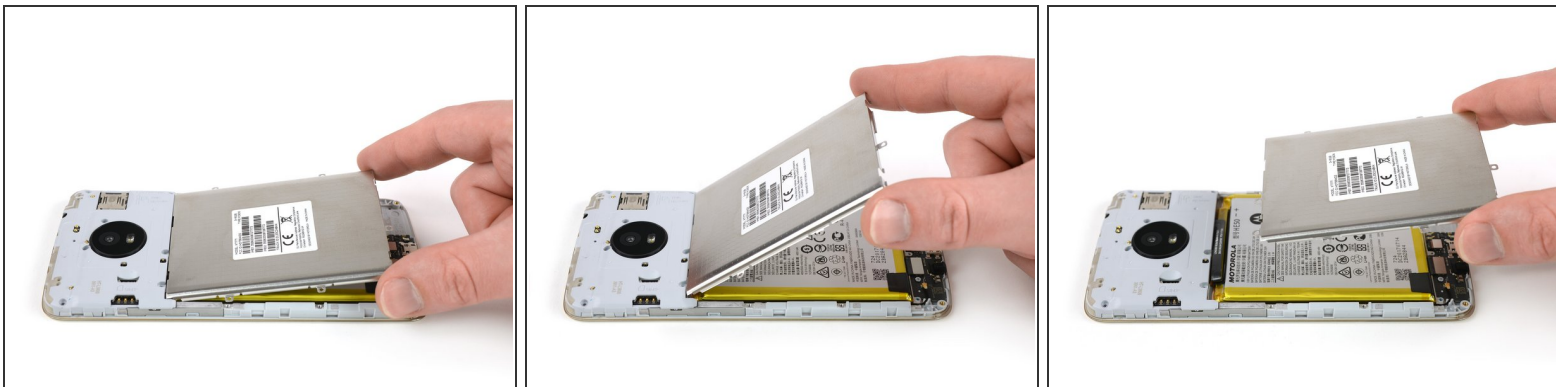
- Remove the eighteen 3.3 mm Phillips screws securing the midframe assembly.

Step 4



- Remove the charging board cover.

Step 5



- Remove the battery cover.

Step 6



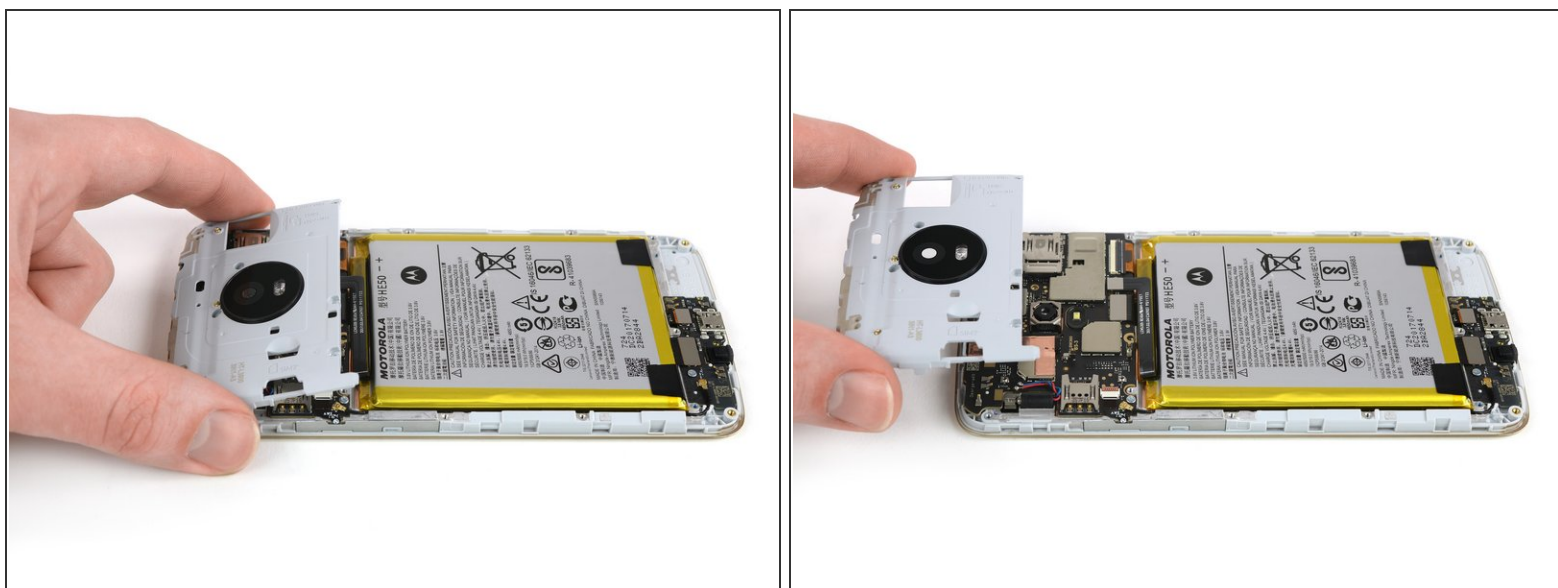
- Insert an opening pick underneath the bottom left corner of the motherboard cover.
- Slide the opening pick between the cover and the second SIM tray to release the plastic clip.

Step 7



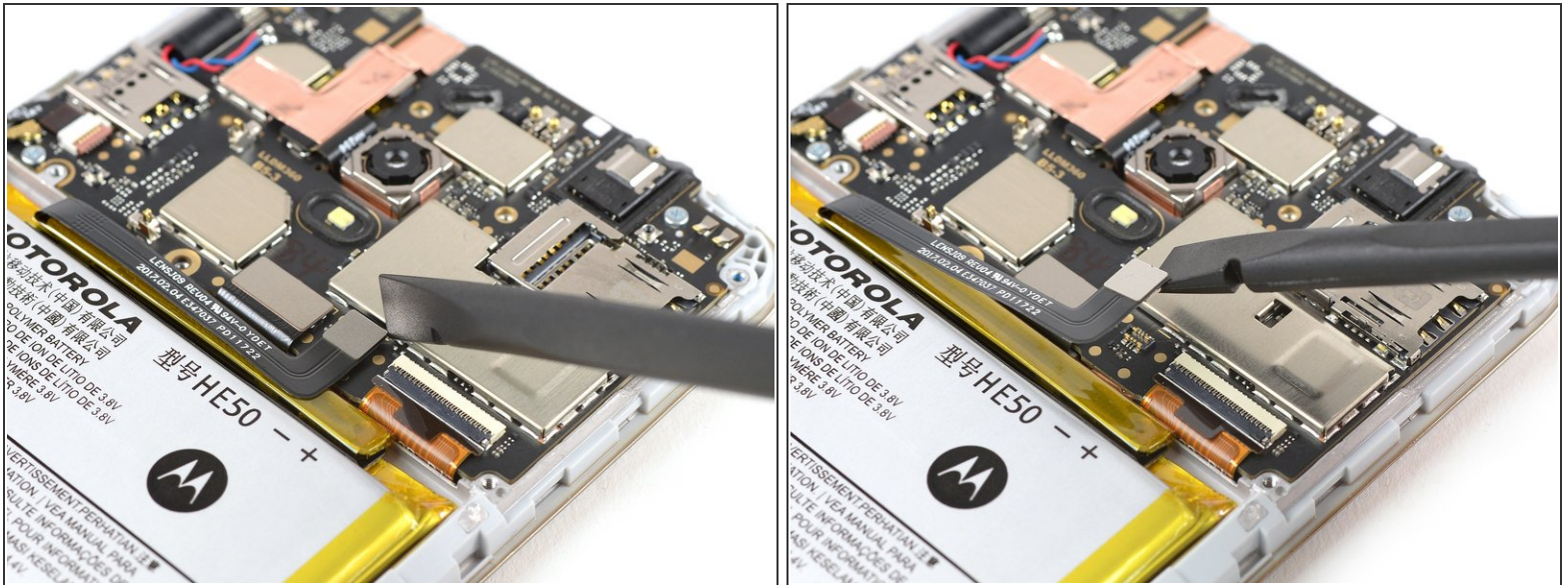
- Insert an opening pick underneath the bottom right corner of the motherboard cover.
- Use the opening pick to pry up the motherboard cover.

Step 8



- Remove the motherboard cover.

Step 9 — Battery Disconnect



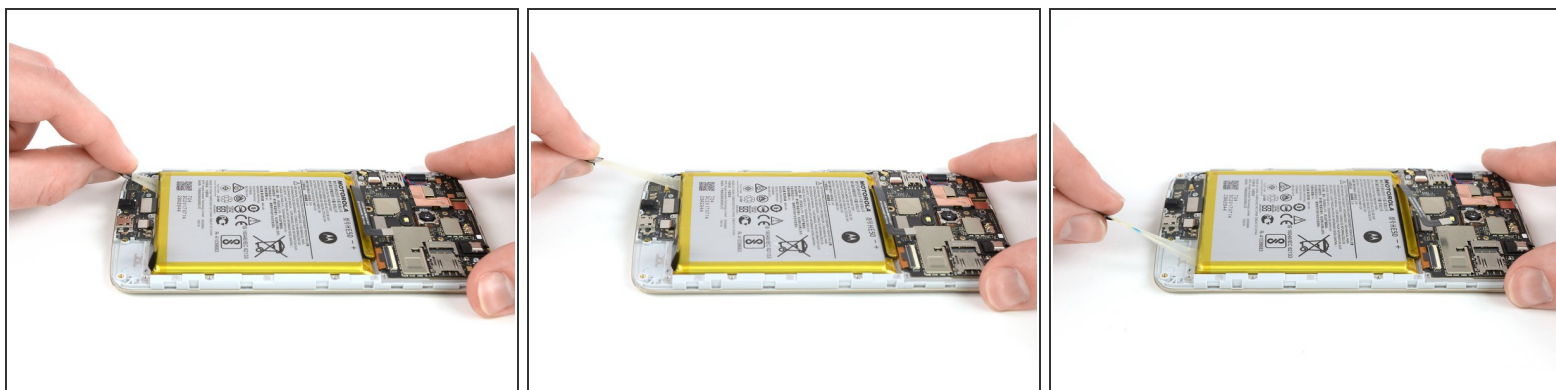
- Use the edge of a spudger to pry up and disconnect the battery flex cable from the motherboard.

Step 10 — Battery



- Use a pair of tweezers to peel the ends of the two pull tabs off of the bottom edge of the battery.

Step 11





- Pull out the left adhesive strip by steadily pulling the left tab at a flat angle.
 - ⓘ If the adhesive strip rips, grab and twist the remaining stub around the tip of a pair of tweezers a couple of times and then continue pulling.
- Repeat the same process for the right adhesive strip.

Step 12



- Remove the battery.

 Do not reuse the battery after it has been removed, as doing so is a potential safety hazard. Replace it with a new battery.

-  Secure the new battery with pre-cut adhesive or double-sided adhesive tape.
 - In order to position it correctly, apply the new adhesive into the phone at the places where the old adhesive was located, not directly onto the battery.
 - Press the new battery firmly into place for 5-10 seconds.

To reassemble your device, follow these instructions in reverse order.

If possible, turn on your phone and test your repair before installing new adhesive and resealing the phone.

For optimal performance, after completing this guide, **calibrate** your newly installed battery: Charge it to 100% and keep charging it for at least two more hours. Then use your device until it shuts off due to low battery. Finally, charge it uninterrupted to 100%.