



Motorola Moto E4 Plus Daughterboard Replacement

Remove and replace the daughterboard for the Motorola Moto E4 Plus.

Written By: Arthur Shi



INTRODUCTION

Follow this guide to remove and replace the daughterboard on the Moto E4 Plus. The daughterboard houses the charging port, a downward facing microphone, and the vibration motor.



TOOLS:

- [Spudger](#) (1)
 - [T3 Torx Screwdriver](#) (1)
-

Step 1 — Remove the back cover



 Power off your phone before beginning disassembly.

- Insert the edge of the spudger into the notch on the bottom right corner of the phone.
- Twist the spudger to start releasing the back cover from the phone.
- Slide the spudger along the bottom edge to separate the back cover from the phone.

Step 2



- Lift the phone unit out of the back cover.

Step 3 — Remove the midframe screws



- Remove the nineteen 3.2 mm long T3 screws securing the plastic midframe.

Step 4 — Release the midframe clips



i The plastic midframe is still held in place with clips.

- Insert the flat end of a spudger into the midframe seam at the bottom left corner of the phone (near the microphone hole).
- Twist the spudger to release the plastic clip.
- Repeat the process for the clip near the top right corner of the phone.

Step 5 — Remove the midframe



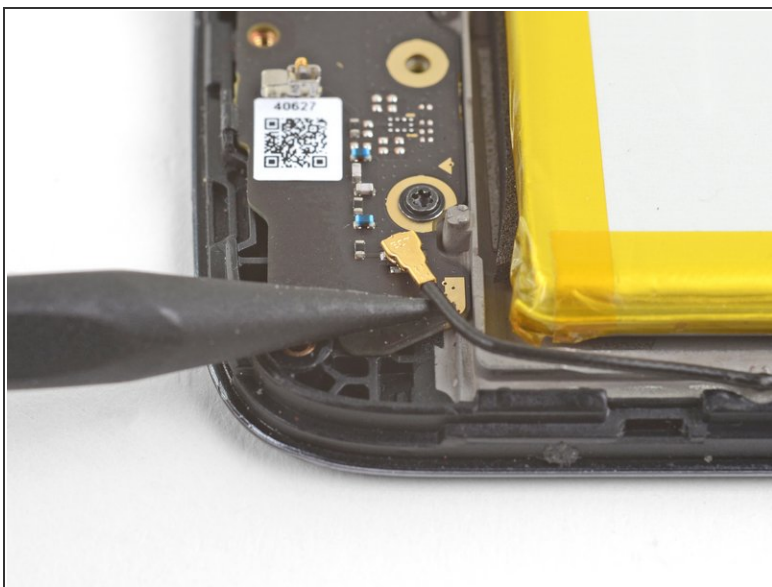
- Lift the bottom edge of the plastic midframe upwards until the clips along the top edge release.
 - Remove the plastic midframe.
- ✦ To reattach the plastic midframe, line up the midframe to the phone and squeeze along the edges to engage the clips.

Step 6 — Disconnect the battery



- Use the point of a spudger to pry up and disconnect the battery connector from its motherboard socket.

Step 7 — Disconnect the antenna



- Use the point of a spudger to pry up and disconnect the antenna cable from its daughterboard socket.

Step 8 — Disconnect the daughterboard connectors



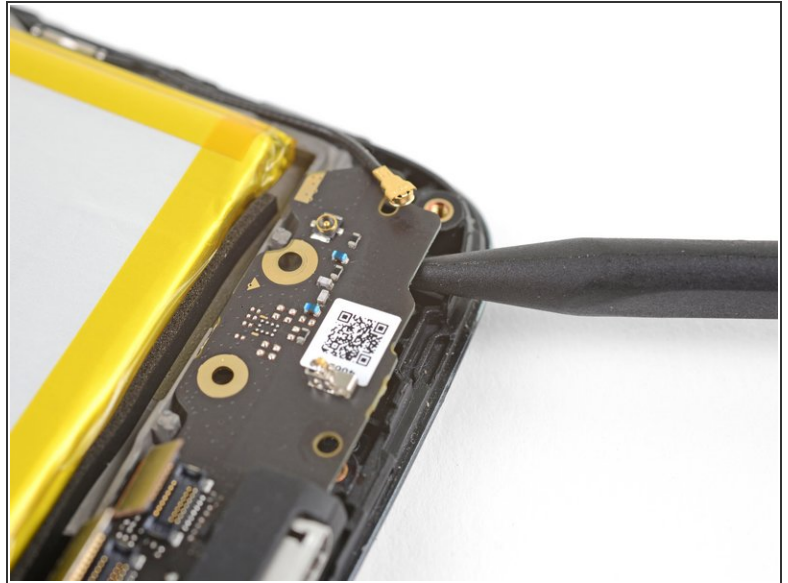
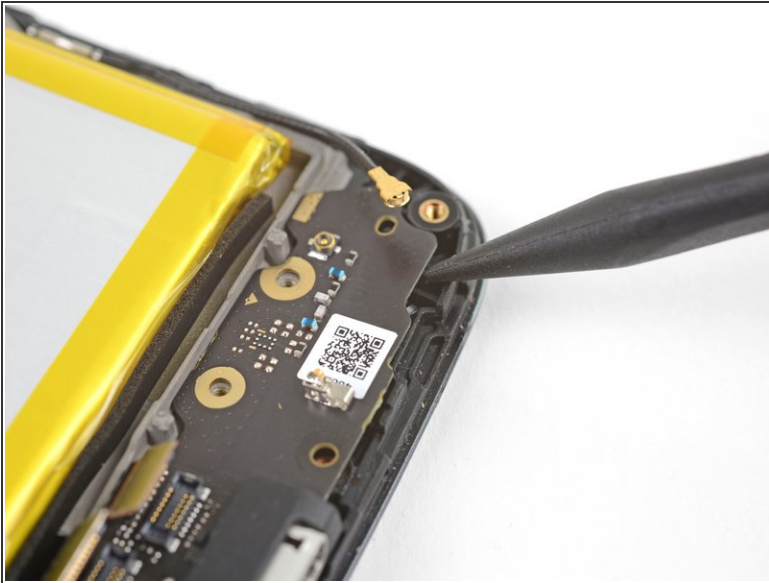
- Use the point of a spudger to pry up and disconnect the interconnect cable from its daughterboard socket.
- Pry up and disconnect the fingerprint sensor cable next to it from the daughterboard.

Step 9 — Remove the daughterboard screws



- Remove the two 3.2 mm long T3 screws securing the daughterboard.

Step 10 — Loosen the daughterboard



- Insert the point of a spudger under the bottom right corner of the daughterboard and pry up to loosen the daughterboard.

Step 11 — Loosen the vibration motor



- Insert the point of a spudger underneath the vibration motor and pry upwards to loosen it.

Step 12 — Remove the daughterboard



- Grasp the daughterboard by the edges and lift it out of its recess.
- Remove the daughterboard. The vibration motor will be attached to it.

To reassemble your device, follow these instructions in reverse order.