



Motorola Moto E4 Plus LCD and Digitizer Replacement

This guide shows how to remove the LCD and digitizer of your Motorola Moto E4 Plus.

Written By: Arthur Shi



INTRODUCTION

Use this guide to remove the LCD and digitizer of your Motorola Moto E4 Plus.

Before disassembling your phone, discharge the battery below 25%. The battery can catch fire and/or explode if accidentally punctured, but the chances of that happening are much lower if discharged.

This guide replaces only the display while leaving the original frame and battery in place.

Some replacement screens for this phone come pre-installed on a new frame (a.k.a. chassis), which requires following a very different procedure. Make sure you have the correct part before starting this guide.



TOOLS:

- [T3 Torx Screwdriver](#) (1)
- [Spudger](#) (1)
- [Suction Handle](#) (1)
- [iFixit Opening Picks set of 6](#) (1)
- [Tweezers](#) (1)
- [iOpener](#) (1)



PARTS:

- [Moto E4 Plus LCD and Digitizer](#) (1)
- [Moto E4 Plus Display Adhesive](#) (1)

Step 1 — Remove the back cover



 Power off your phone before beginning disassembly.

- Insert the edge of the spudger into the notch on the bottom right corner of the phone.
- Twist the spudger to start releasing the back cover from the phone.
- Slide the spudger along the bottom edge to separate the back cover from the phone.

Step 2



- Lift the phone unit out of the back cover.

Step 3 — Remove the midframe screws



- Remove the nineteen 3.2 mm long T3 screws securing the plastic midframe.

Step 4 — Release the midframe clips



i The plastic midframe is still held in place with clips.

- Insert the flat end of a spudger into the midframe seam at the bottom left corner of the phone (near the microphone hole).
- Twist the spudger to release the plastic clip.
- Repeat the process for the clip near the top right corner of the phone.

Step 5 — Remove the midframe

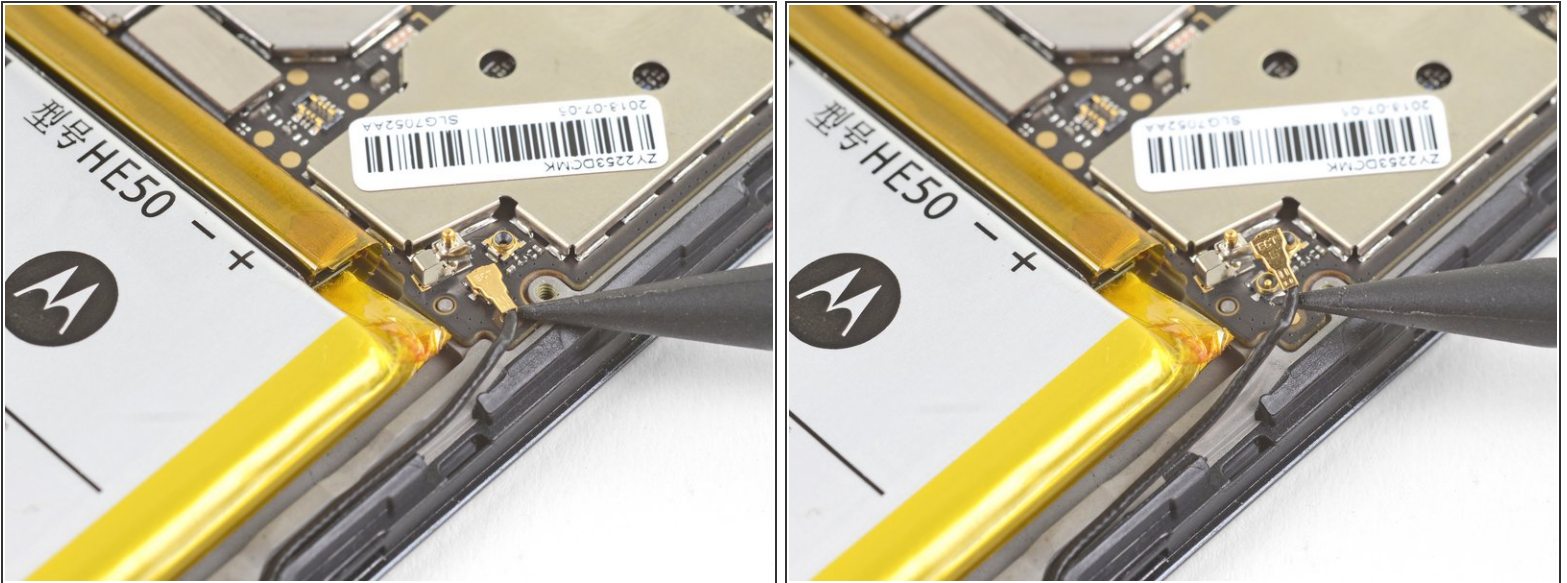


- Lift the bottom edge of the plastic midframe upwards until the clips along the top edge release.
 - Remove the plastic midframe.
- ☞ To reattach the plastic midframe, line up the midframe to the phone and squeeze along the edges to engage the clips.

-

- Page 7 of 17

Step 8 — Disconnect the antenna cable



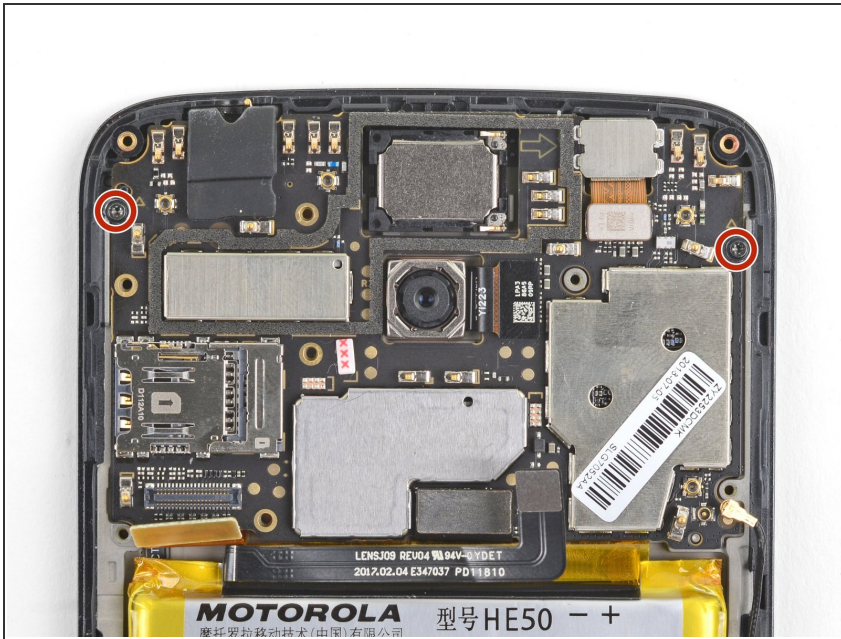
- Use the point of a spudger to pry up and disconnect the antenna cable from its motherboard socket.

Step 9 — Disconnect the interconnect cable



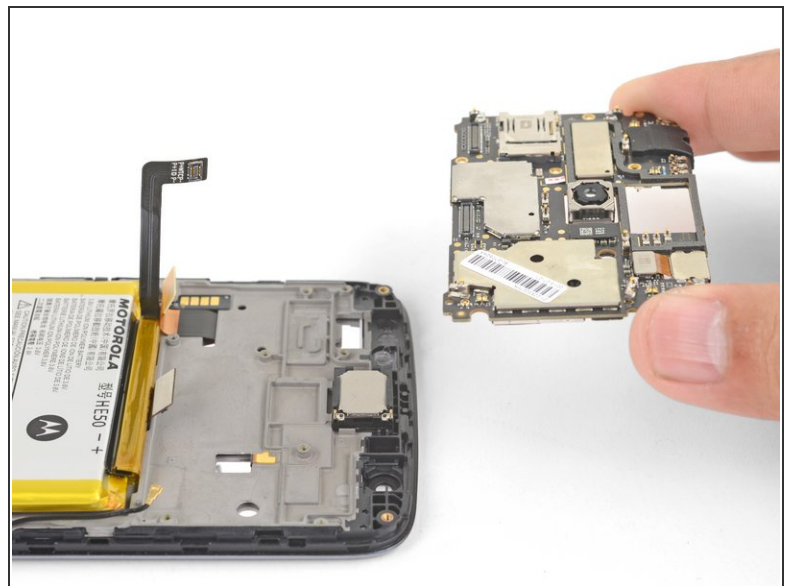
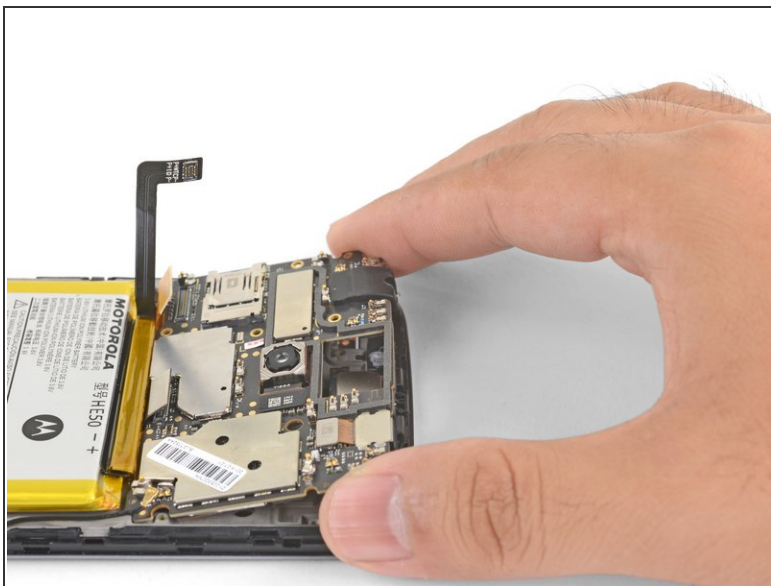
- Use the point of a spudger to pry up and disconnect the interconnect cable from its motherboard socket.

Step 10 — Remove the motherboard screws



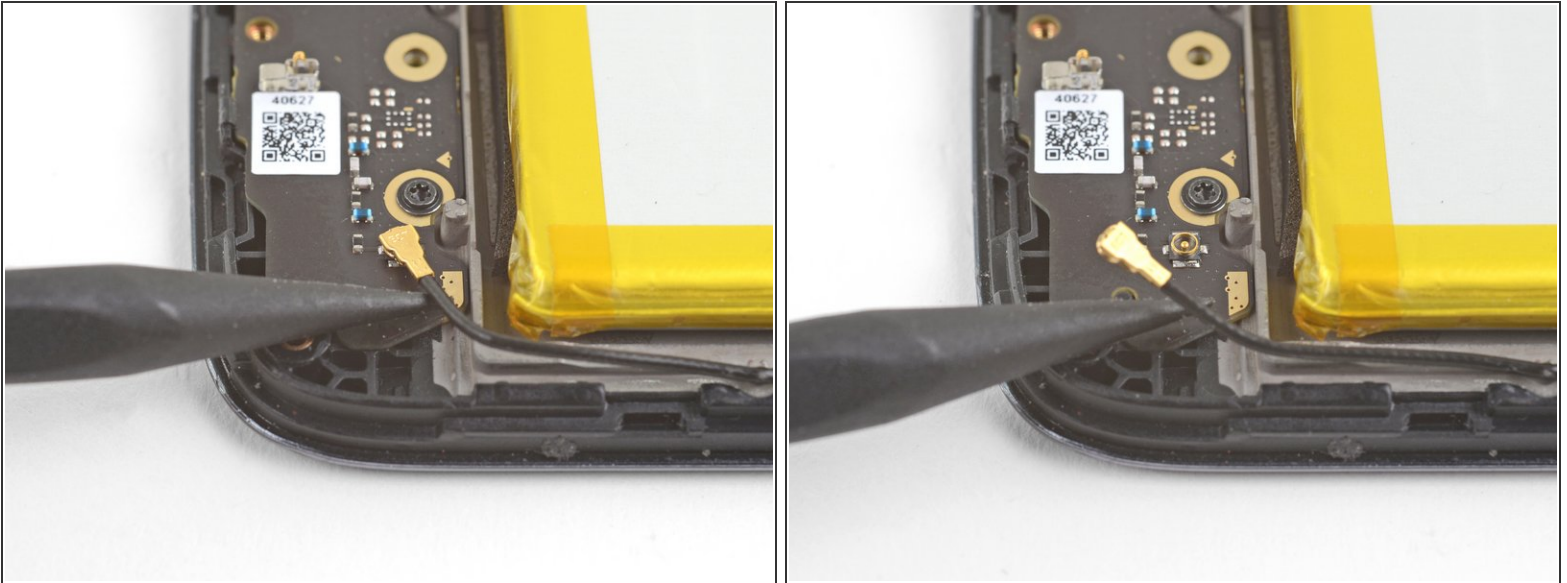
- Remove the two black 3.2 mm long T3 screws securing the motherboard.

Step 11 — Remove the motherboard



- Grasp the motherboard by the top corners and lift it out of the phone.
- Remove the motherboard.

Step 12 — Disconnect the antenna



- Use the point of a spudger to pry up and disconnect the antenna cable from its daughterboard socket.

Step 13 — Disconnect the daughterboard connectors



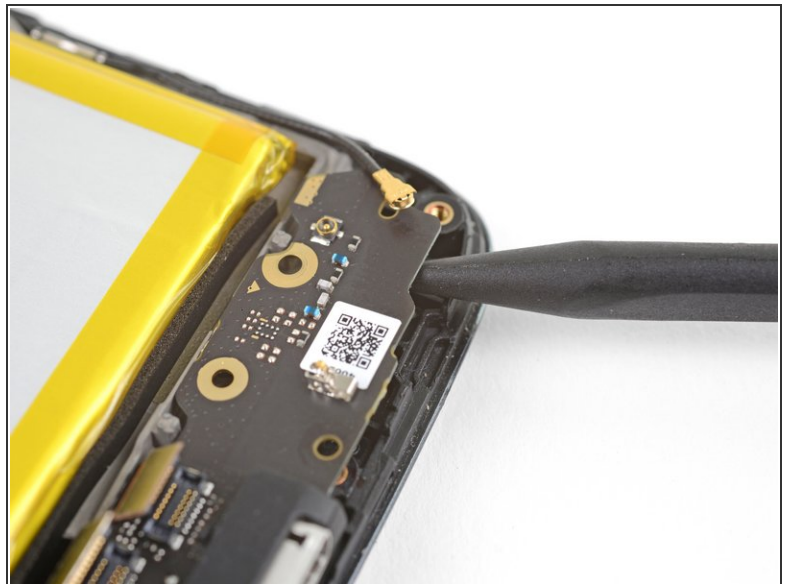
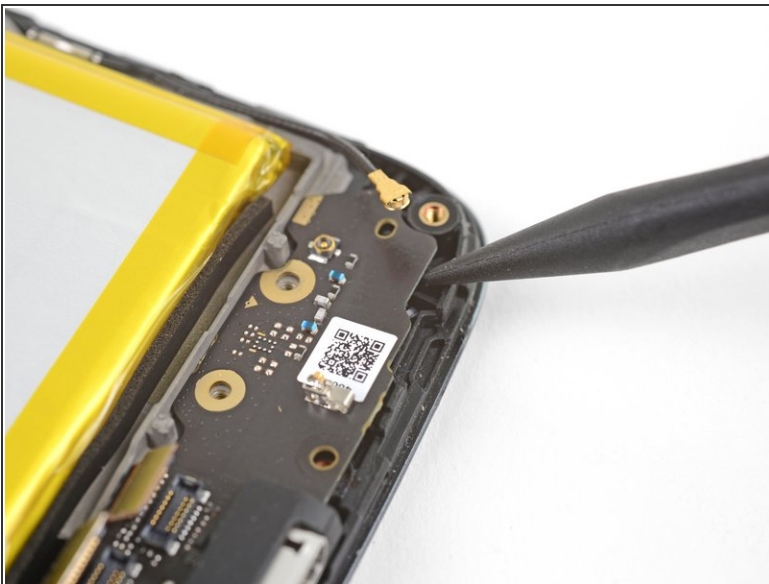
- Use the point of a spudger to pry up and disconnect the interconnect cable from its daughterboard socket.
- Pry up and disconnect the fingerprint sensor cable next to it from the daughterboard.

Step 14 — Remove the daughterboard screws



- Remove the two 3.2 mm long T3 screws securing the daughterboard.

Step 15 — Loosen the daughterboard



- Insert the point of a spudger under the bottom right corner of the daughterboard and pry up to loosen the daughterboard.

Step 16 — Loosen the vibration motor



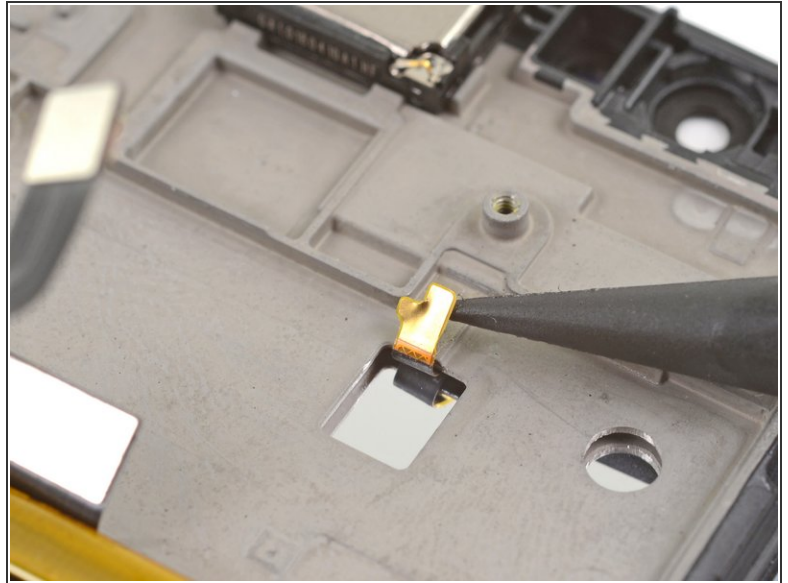
- Insert the point of a spudger underneath the vibration motor and pry upwards to loosen it.

Step 17 — Remove the daughterboard



- Grasp the daughterboard by the edges and lift it out of its recess.
- Remove the daughterboard. The vibration motor will be attached to it.

Step 18 — Disconnect the display ground



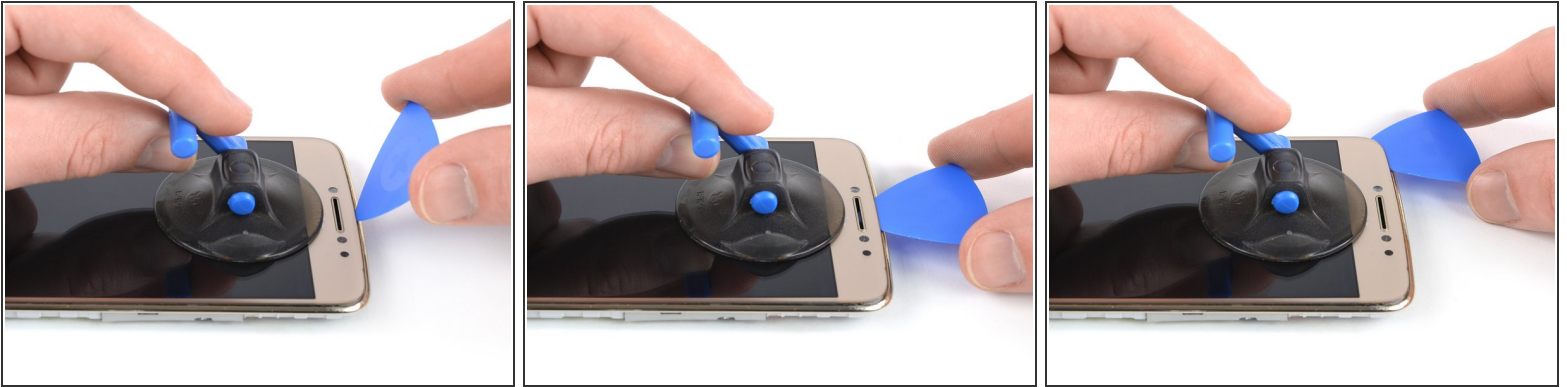
- Use the point of a spudger to pry up and disconnect the display grounding cable from the frame.
- ✦ When you install the replacement cable, be sure that it is properly positioned with the gold side facing up.

Step 19 — Heat the display adhesive



- [Prepare an iOpener](#) and apply it to the display for at least two minutes to loosen the adhesive underneath.

Step 20 — Loosen the display



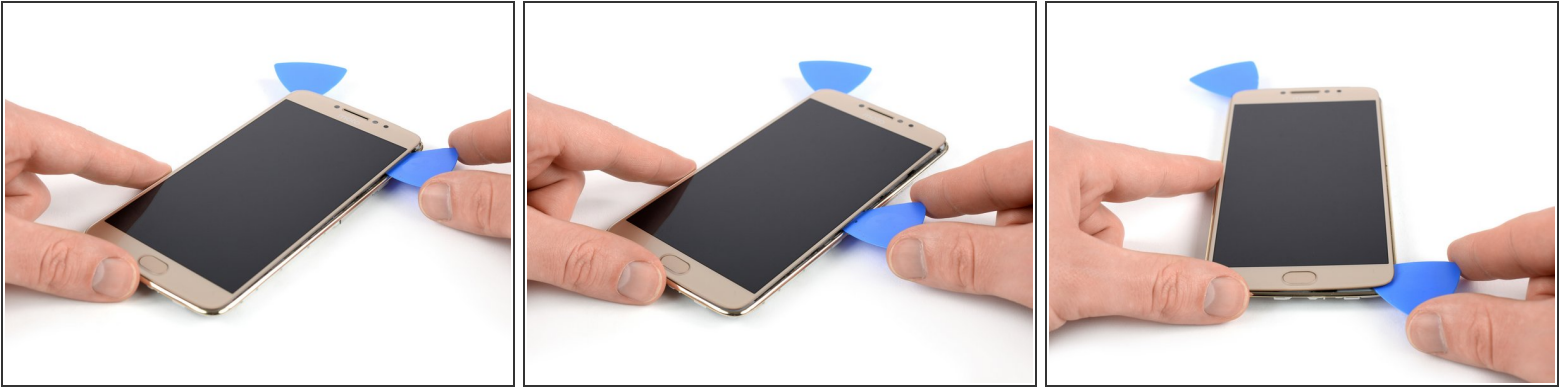
- Once the screen is warm to the touch, apply a suction cup near the top edge of the phone below the earpiece speaker.
- ❗ If the phone's screen is cracked, the suction cup may not stick. Try [lifting it with strong tape](#), or superglue the suction cup in place and allow it to cure so you can proceed.
- Pull up the suction cup, and insert the tip of an opening pick under the display where the earpiece speaker is located.
- Slide the opening pick to the top left corner of the phone to cut the adhesive.

Step 21




- Insert a second opening pick and slide it to the top right corner of the phone.

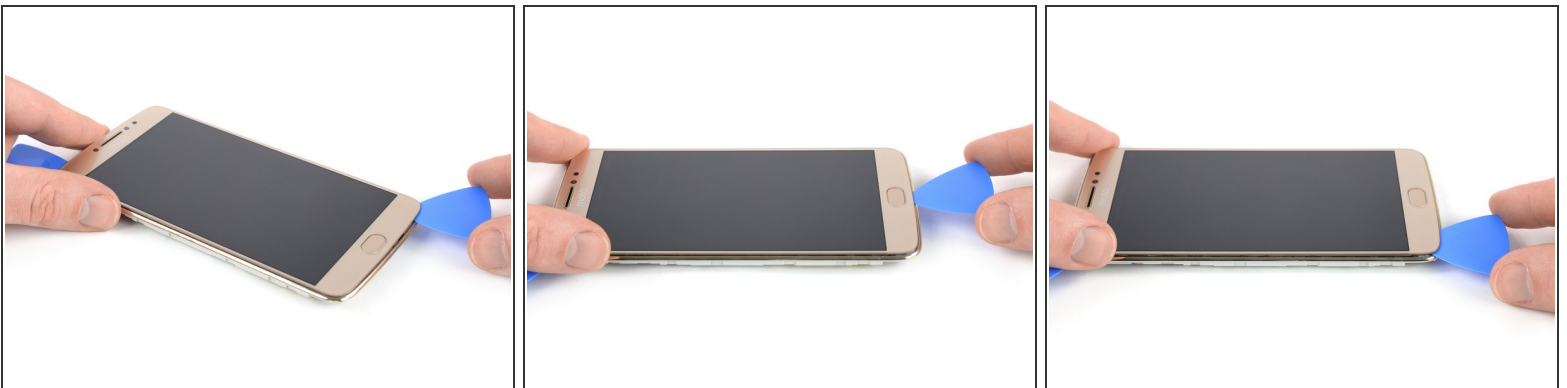
Step 22




 If cutting becomes too difficult, [reheat](#) and reapply the iOpener to the screen.

- Slide the opening pick from the top right corner down the right edge of the phone and cut the adhesive with it.
 While cutting, make sure the pick slides **under the display panel** and not just between the display and the front glass.
- Continue sliding the opening pick around the bottom right corner of the phone.

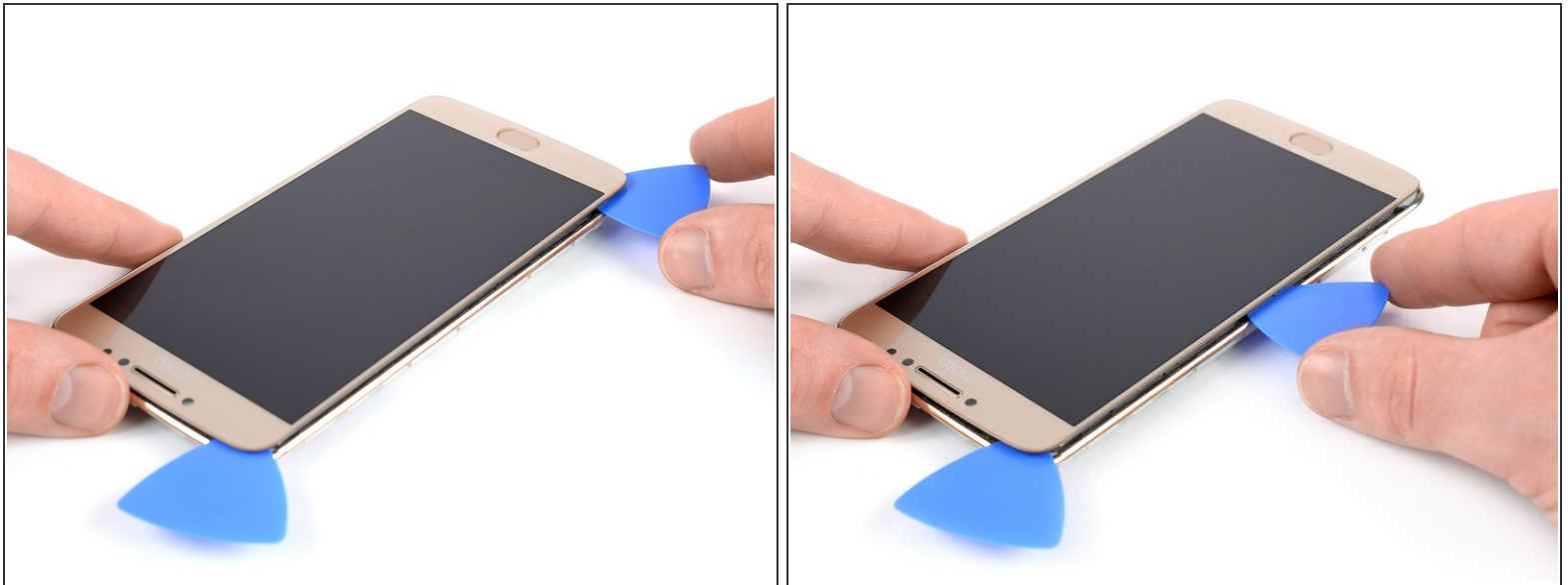
Step 23




- Slide the opening pick along the bottom edge of the phone and cut the adhesive.

 Be careful around the home button, inserting only the tip of the opening pick to prevent damaging the button.

Step 24



- Repeat the previous heating and cutting procedure on the left edge of the phone to cut the remaining adhesive.

 Don't completely remove the display yet! The fingerprint and display flex cables are still threaded through the midframe.

Step 25 — Remove the LCD and digitizer



- Carefully thread the display cable at the top and the fingerprint sensor cable on the bottom through their gaps in the midframe.
- Remove the LCD and digitizer.
- ✦ Remove any remaining adhesive from the midframe, and clean the glued areas with isopropyl alcohol and a lint-free cloth.
- ⓘ In case your new LCD and digitizer doesn't include the fingerprint sensor, you will need to continue with the [fingerprint sensor guide](#) to transfer it to the new LCD and digitizer.
- ✦ Carefully compare your replacement part with your screen. You may need to transfer minor parts such as earpiece bezel to the new part.

To reassemble your device, follow these instructions in reverse order.

If possible, turn on your phone and test your repair before installing new adhesive and resealing the phone.

Take your e-waste to an [R2 or e-Stewards certified recycler](#).

Repair didn't go as planned? Try some [basic troubleshooting](#), or ask our [Moto E4 Plus Answers community](#) for help.