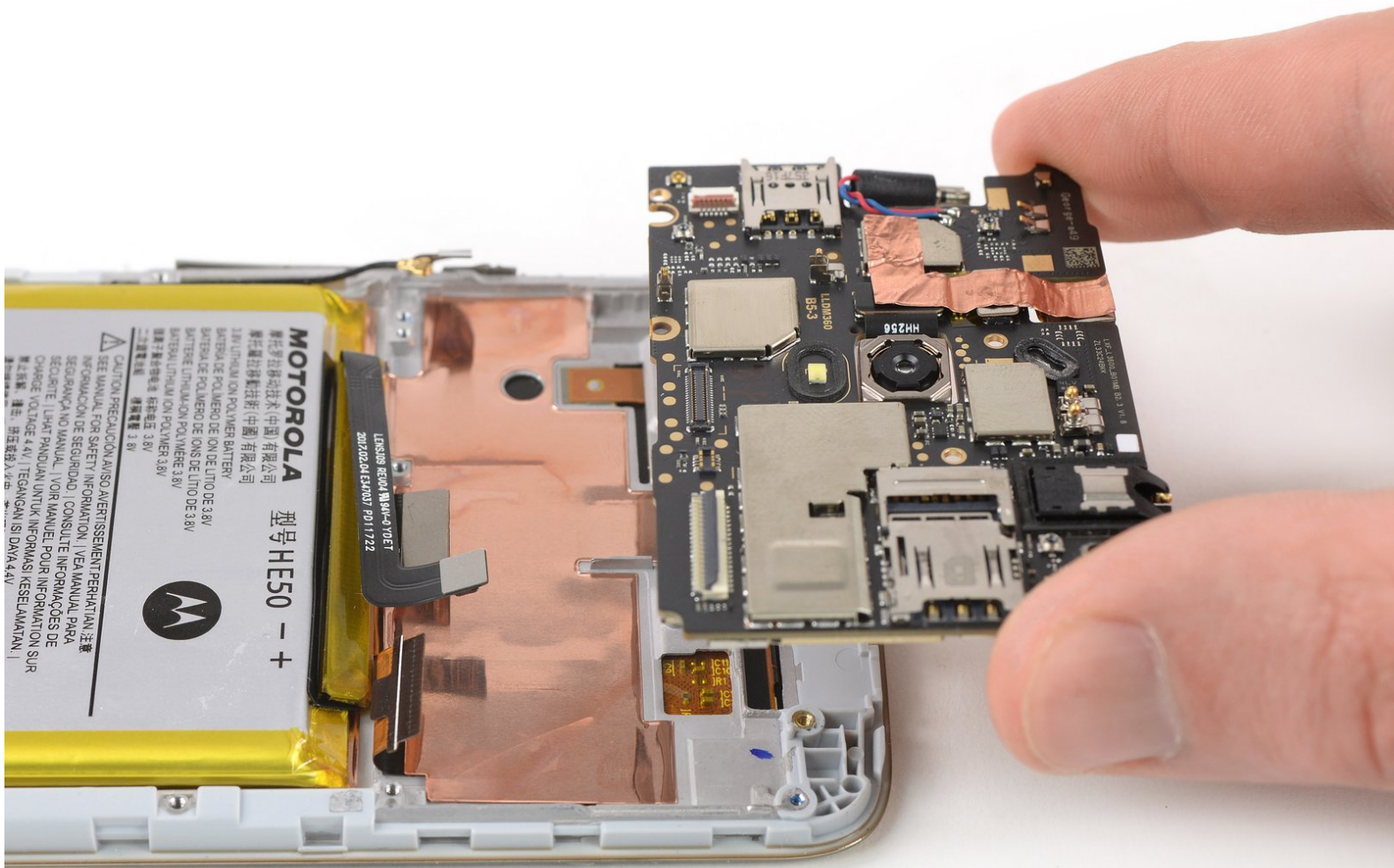




Motorola Moto E4 Plus Motherboard Assembly

Motherboard Assembly prereq

Written By: Dominik Schnabelrauch



INTRODUCTION

Motherboard Assembly prereq



TOOLS:

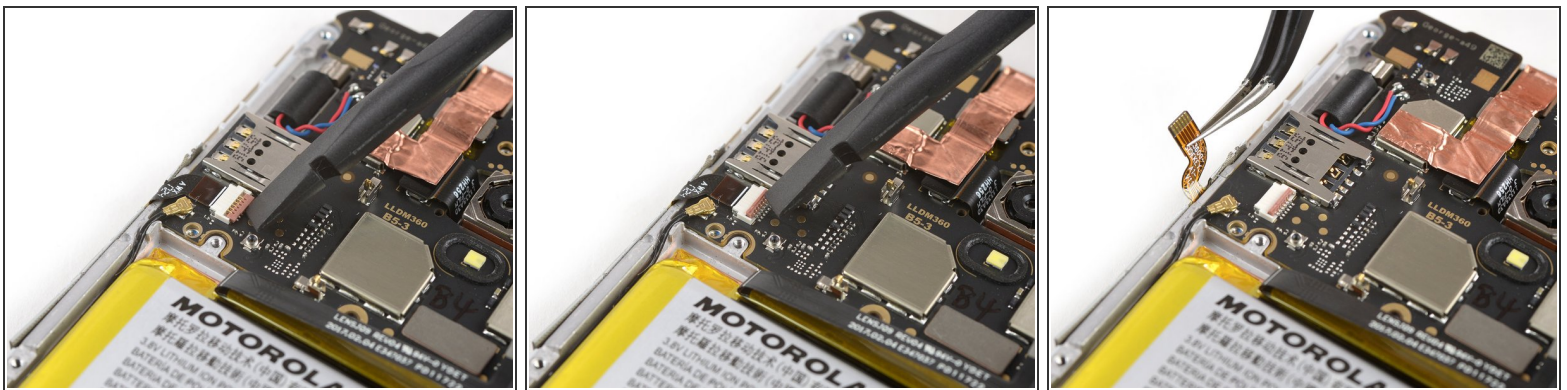
- [Phillips #00 Screwdriver](#) (1)
 - [Spudger](#) (1)
 - [iFixit Opening Picks set of 6](#) (1)
 - [Tweezers](#) (1)
-

Step 1 — Motherboard Assembly



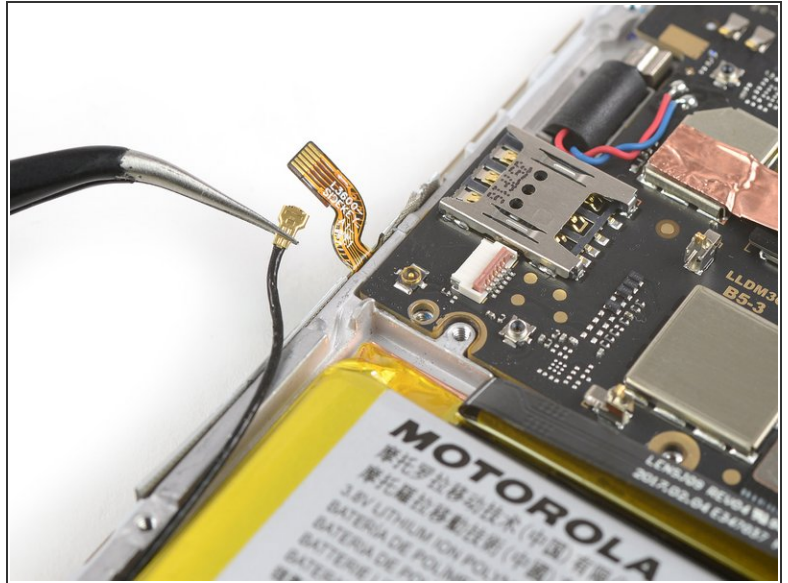
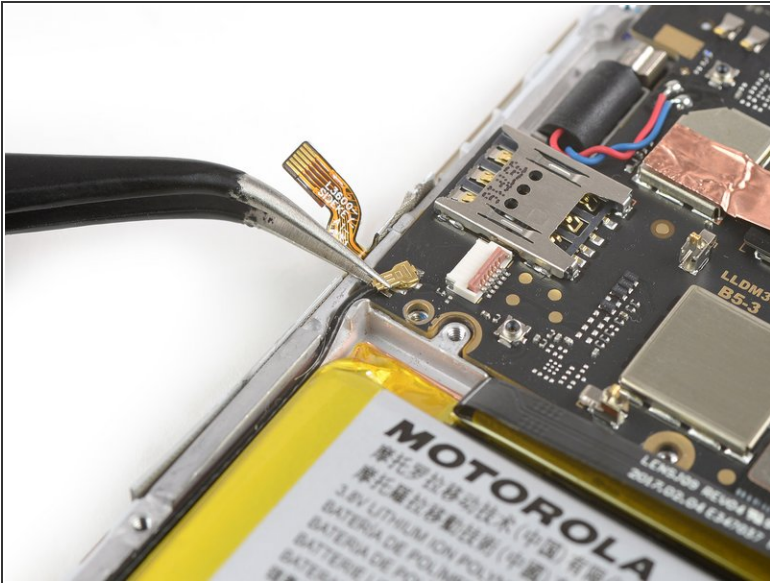
- Remove the two 2.9 mm Phillips screws.

Step 2



- Use the edge of a spudger to pry up the flap of the ZIF connector located below the SIM slot on the left side of the motherboard.
 - Use a pair of tweezers to pull the power and volume button flex cable out of the ZIF connector.
- ✦ To reattach [ZIF connectors](#) like this one, carefully insert the flex cable into the ZIF connector up to the marked line on the cable, and then close the locking flap.

Step 3



- Use a pair of tweezers to pry up and disconnect the antenna cable.

Step 4



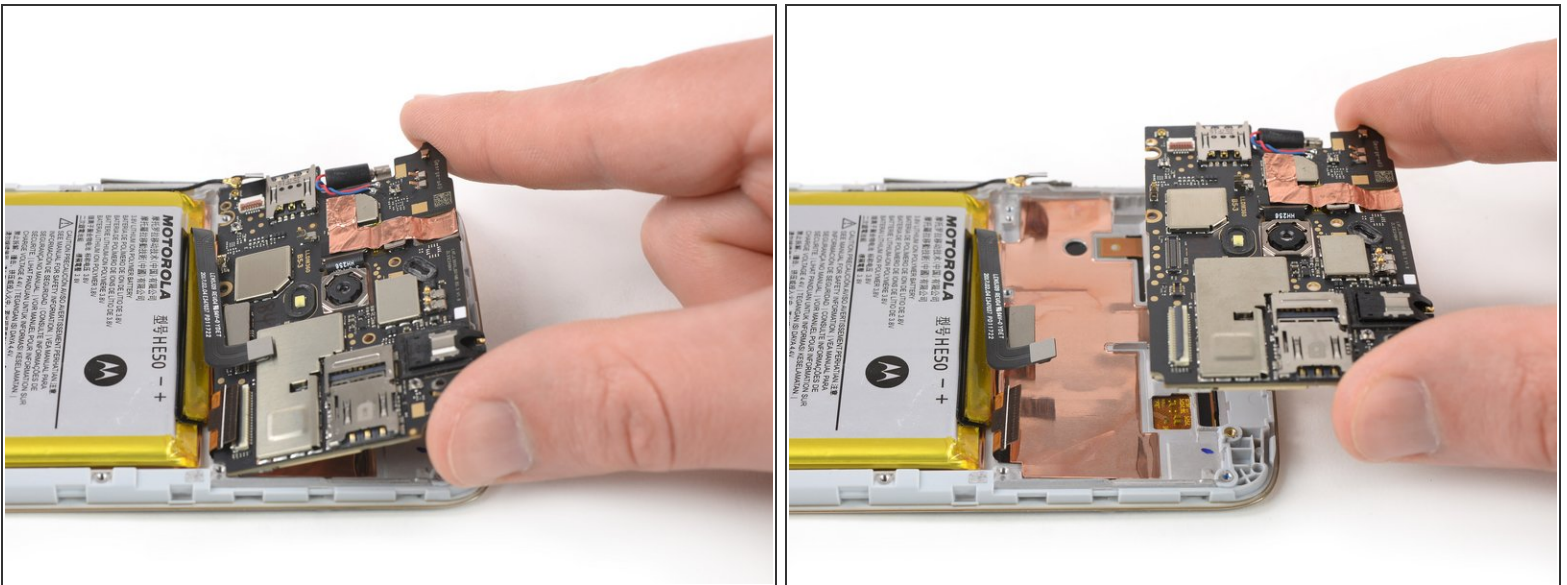
- Use the flat end of a spudger to pry up and disconnect the interconnect flex cable.

Step 5



- Use the tip of a spudger or an opening pick to pry up the flap of the ZIF connector, located in the bottom right corner of the motherboard.
- Use a pair of tweezers to pull the display flex cable out of the ZIF connector.

Step 6



- Grasp the motherboard by the top corners and remove it by lifting up and pulling it carefully out of its recess.

To reassemble your device, follow these instructions in reverse order.