



Motorola Moto E4 Plus Motherboard Replacement

Remove and replace the motherboard for the Motorola Moto E4 Plus.

Written By: Arthur Shi



INTRODUCTION

Follow this guide to remove and replace the motherboard for the Moto E4 Plus.



TOOLS:

- [Spudger](#) (1)
 - [T3 Torx Screwdriver](#) (1)
-

Step 1 — Remove the back cover



 Power off your phone before beginning disassembly.

- Insert the edge of the spudger into the notch on the bottom right corner of the phone.
- Twist the spudger to start releasing the back cover from the phone.
- Slide the spudger along the bottom edge to separate the back cover from the phone.

Step 2



- Lift the phone unit out of the back cover.

Step 3 — Remove the midframe screws



- Remove the nineteen 3.2 mm long T3 screws securing the plastic midframe.

Step 4 — Release the midframe clips



i The plastic midframe is still held in place with clips.

- Insert the flat end of a spudger into the midframe seam at the bottom left corner of the phone (near the microphone hole).
- Twist the spudger to release the plastic clip.
- Repeat the process for the clip near the top right corner of the phone.

Step 5 — Remove the midframe



- Lift the bottom edge of the plastic midframe upwards until the clips along the top edge release.
 - Remove the plastic midframe.
- ✦ To reattach the plastic midframe, line up the midframe to the phone and squeeze along the edges to engage the clips.

[illegible]

-

- Page 7 of 10

Step 8 — Disconnect the antenna cable



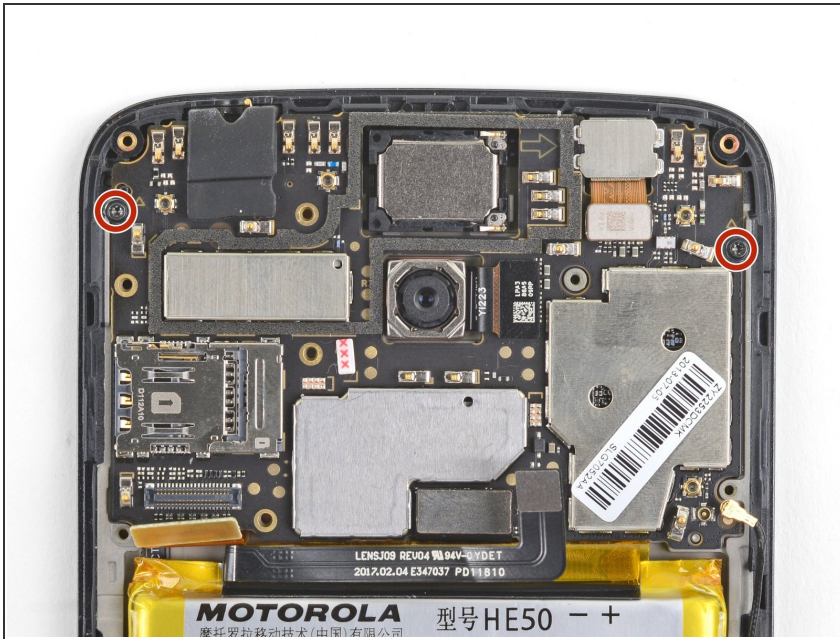
- Use the point of a spudger to pry up and disconnect the antenna cable from its motherboard socket.

Step 9 — Disconnect the interconnect cable



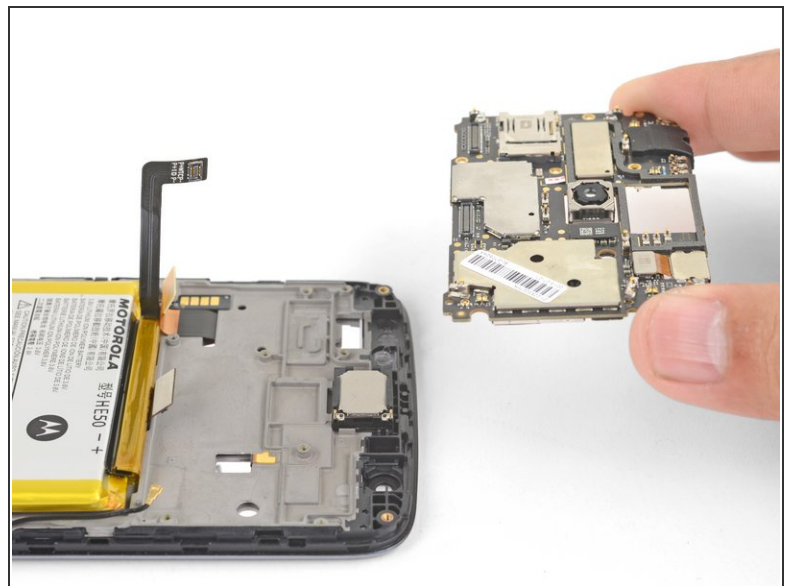
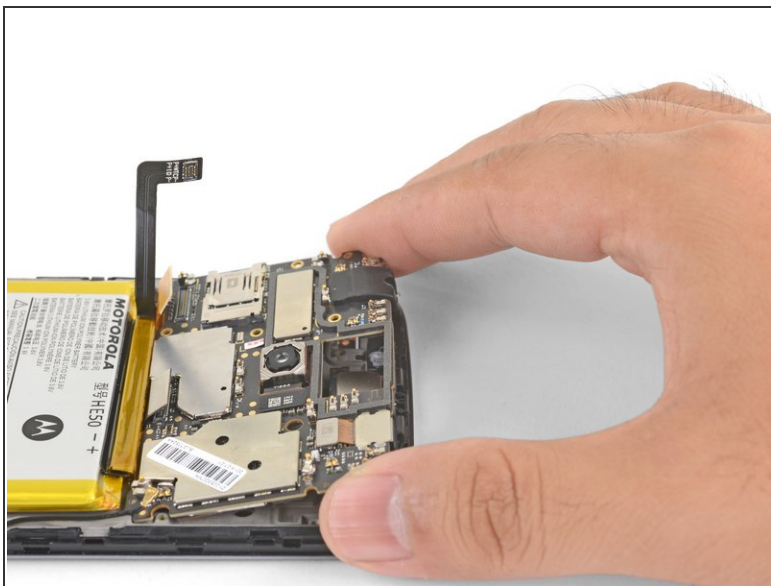
- Use the point of a spudger to pry up and disconnect the interconnect cable from its motherboard socket.

Step 10 — Remove the motherboard screws



- Remove the two black 3.2 mm long T3 screws securing the motherboard.

Step 11 — Remove the motherboard



- Grasp the motherboard by the top corners and lift it out of the phone.
- Remove the motherboard.

To reassemble your device, follow these instructions in reverse order.

Take your e-waste to an [R2 or e-Stewards certified recycler](#).

Repair didn't go as planned? Try some [basic troubleshooting](#), or ask our [Moto E4 Plus Answers community](#) for help.