



Written By: Craig Lloyd



INTRODUCTION

Use this guide to replace a worn-out battery in the Motorola Moto E5. If your battery is swollen, [take appropriate precautions](#).

For your safety, discharge your existing battery below 25% before disassembling your phone. This reduces the risk of a dangerous thermal event if the battery is accidentally damaged during the repair.

Replacing the back cover adhesive after your repair is optional. If you choose to replace it, you'll need to purchase [pre-cut double-side tape](#).



TOOLS:

- [1 x Opening Picks](#) (1)
- [iFixit Opening Tools](#) (1)
- [Spudger](#) (1)
- [Suction Handle](#) (1)
- [Tweezers](#) (1)
- [iOpener](#) (1)
- [Phillips #00 Screwdriver](#) (1)



PARTS:

- [Moto E5 Replacement Battery](#) (1)
- [Moto E5 Battery Adhesive Strips](#) (1)
- [Tesa 61395 Tape](#) (1)

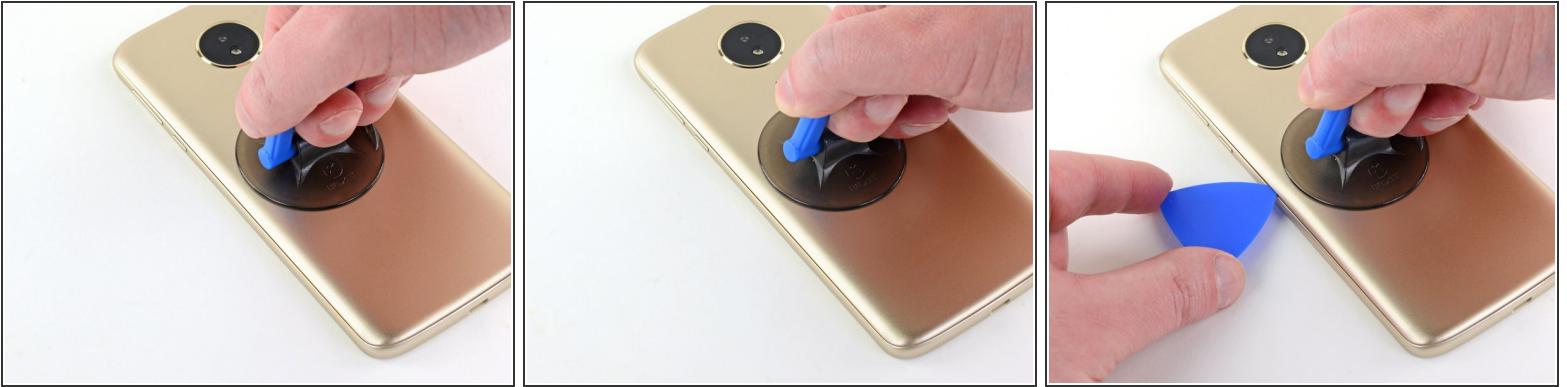
Step 1 — Battery



- [Prepare an iOpener](#) and heat the back of the phone along one edge for about two minutes, or until it's slightly too hot to touch. This will help soften the adhesive securing the back cover to the phone.
- ⓘ You may need to reheat and reapply the iOpener several times to get the phone warm enough to cut the adhesive. Follow the iOpener instructions to avoid overheating.

⚠ A hair dryer, heat gun, or hot plate may also be used, but be careful not to overheat the phone—the internal battery is susceptible to heat damage.

Step 2



- Apply a suction handle to the back cover, near the middle of the edge you heated up.
- Pull the suction cup with firm, constant pressure to create a slight gap between the phone's frame and the back cover.
- Insert an opening pick into the gap.

Step 3



- Slide the opening pick along the edge of the phone, cutting through the adhesive securing the back cover to the phone's frame.
- ⓘ As you move on to cutting the adhesive around the rest of the phone, it may help to leave an opening pick in place here and grab another for the following steps.

Step 4



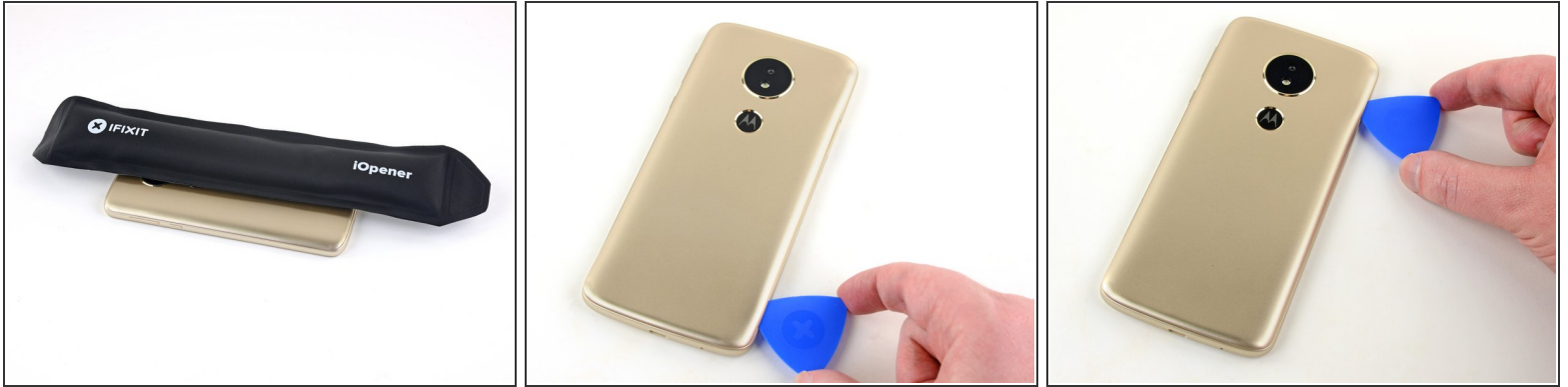
- Use the iOpener to heat the back of the phone along its bottom edge for about two minutes, or until it's slightly too hot to touch.

Step 5



- Continuing sliding the opening pick down and cut the adhesive around the bottom of the phone.
- i** If the adhesive is too tough to slice, continue to heat it until it softens enough to slice through it fairly easily.

Step 6



- Use the iOpener to heat the back of the phone along the other edge for about two minutes, or until it's slightly too hot to touch.
- Continue cutting through the adhesive along the side of the phone.

Step 7



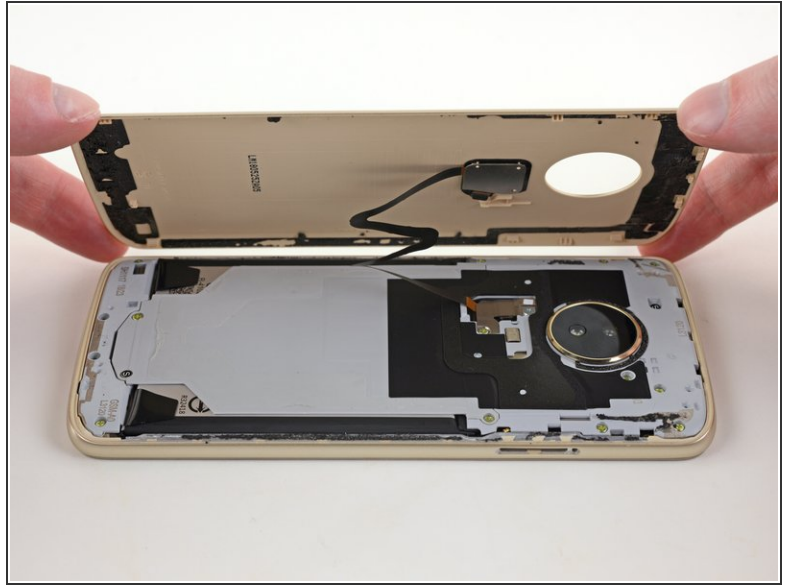
- Use the iOpener to heat the back of the phone along its top edge for about two minutes, or until it's slightly too hot to touch.
- Continue cutting through the adhesive along the top edge of the phone.

Step 8



- There are some areas around the edge that are held down with plastic clips. The opening pick should detach most of the clips. If not, insert an opening tool into the gap and pry the back cover up to release the clips.

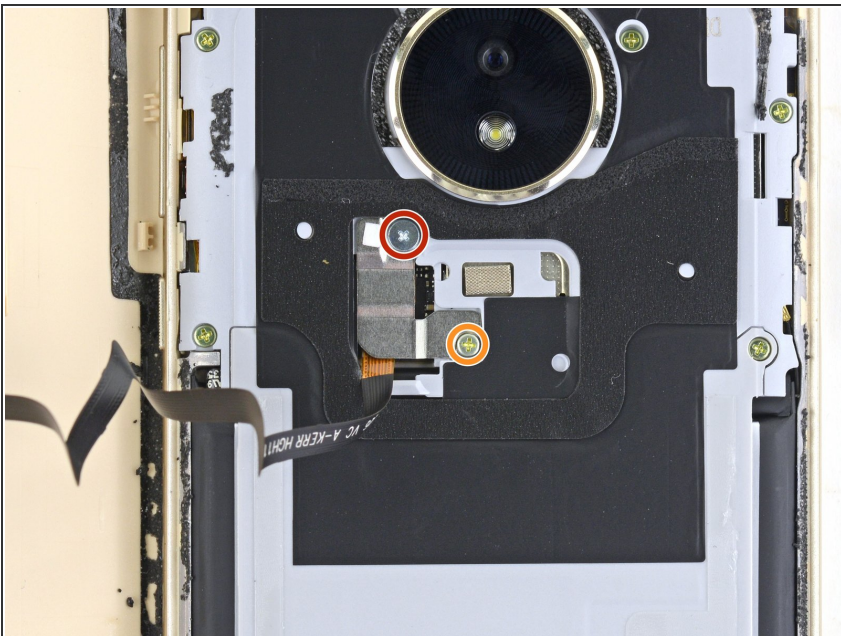
Step 9



- Once all the adhesive is cut, carefully lift the back cover off the back of the phone.

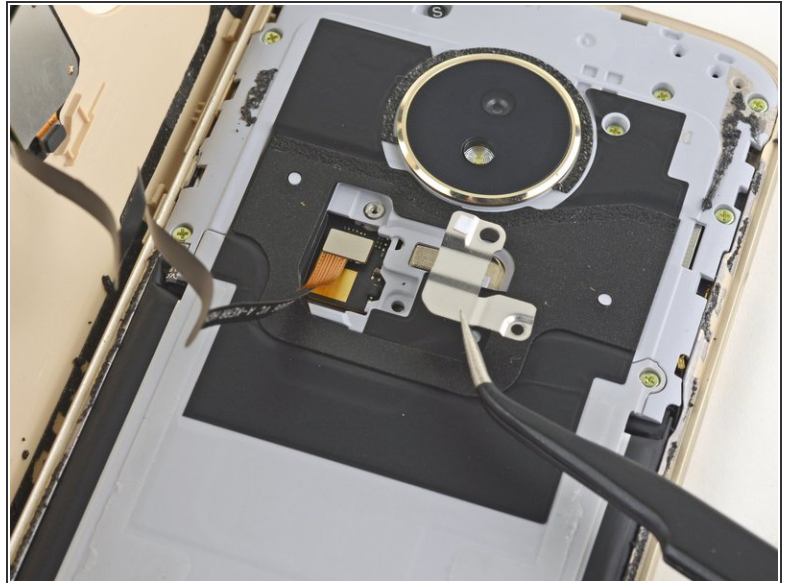
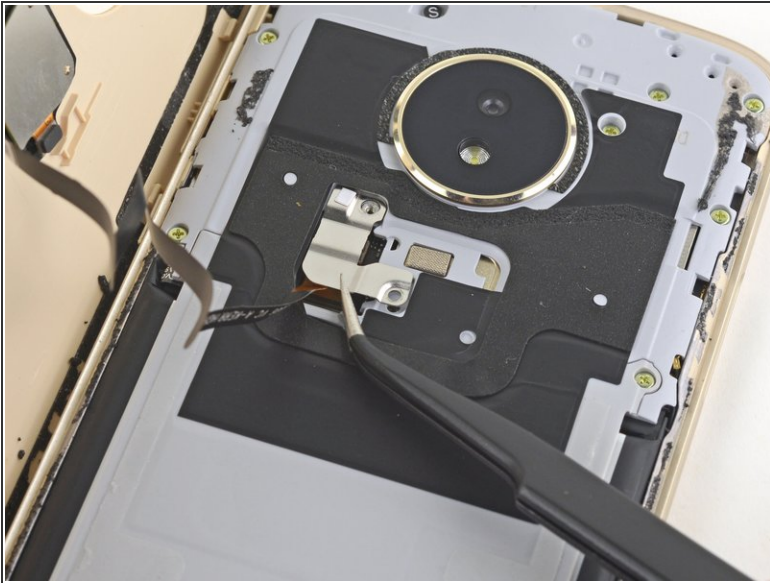
⚠ Don't fully remove the back cover yet. The fingerprint sensor cable is still connected to the phone, and it can rip easily with too much tension.

Step 10



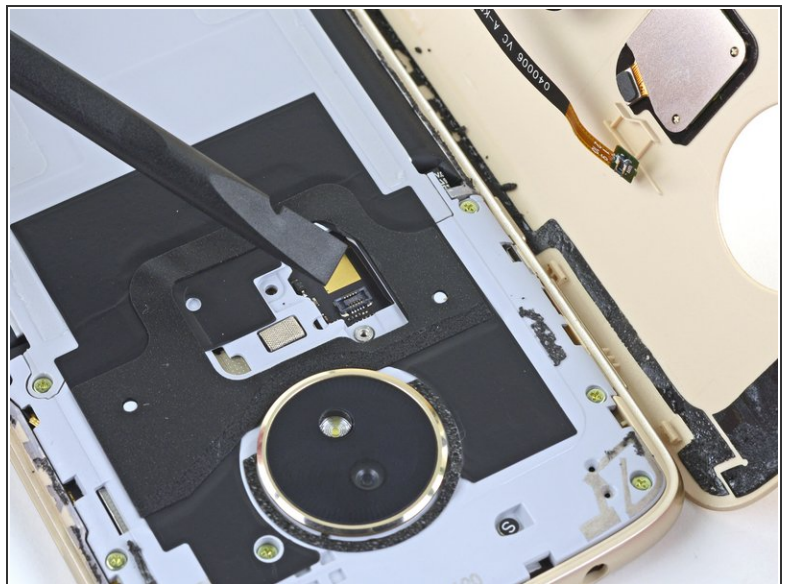
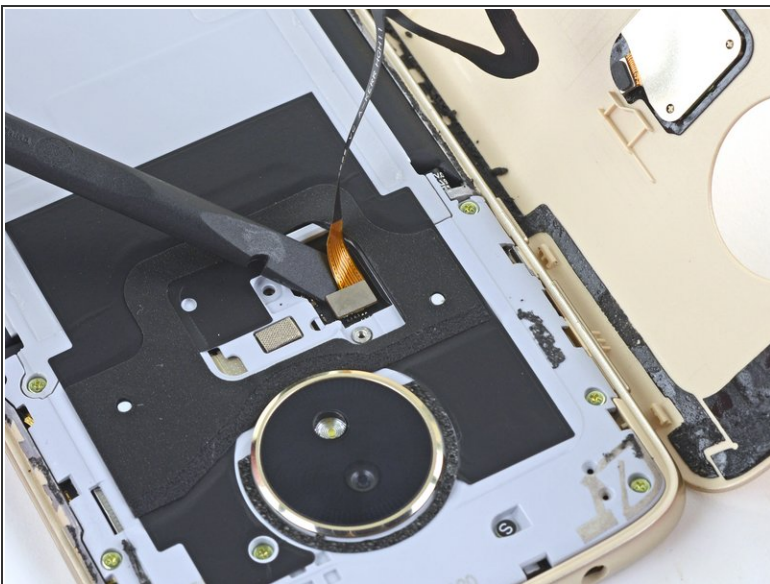
- Remove the following Phillips screws securing the fingerprint sensor cable cover:
 - One 1.6 mm screw.
 - One 3.8 mm screw.
- ⓘ Throughout the repair, [keep track of each screw](#) and make sure it goes back exactly where it came from to avoid damaging your phone.

Step 11



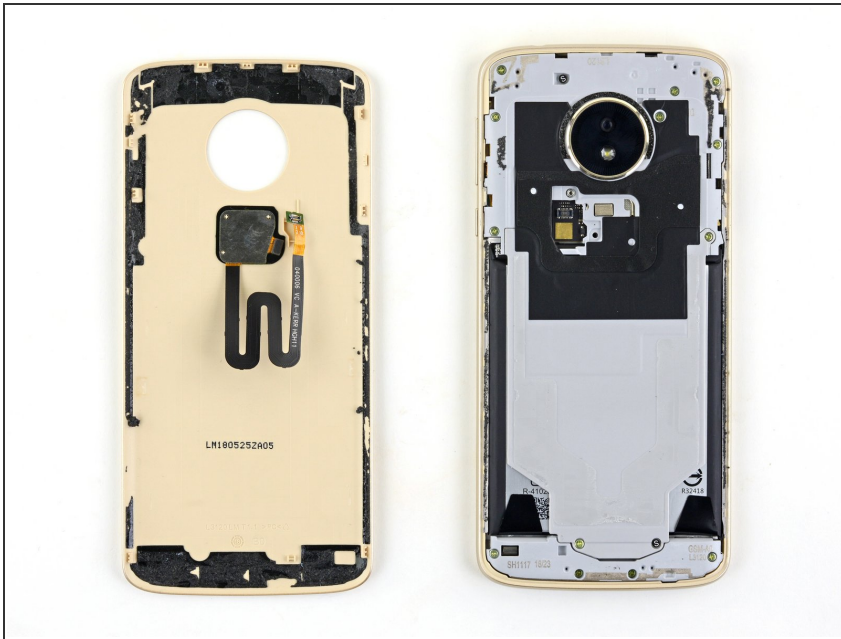
- Use a pair of tweezers to remove the fingerprint sensor cable cover.

Step 12



- Use a spudger to pry up and disconnect the fingerprint sensor cable connector.

Step 13



- Remove the back cover.

i Since the back cover is held down with clips, replacing the adhesive around the perimeter of the back cover is optional. [Replacement adhesive](#) comes in a pre-cut sheet to match the contours of the back cover.

Step 14



- Remove the eleven 3.8 mm-long Phillips screws securing the midframe.

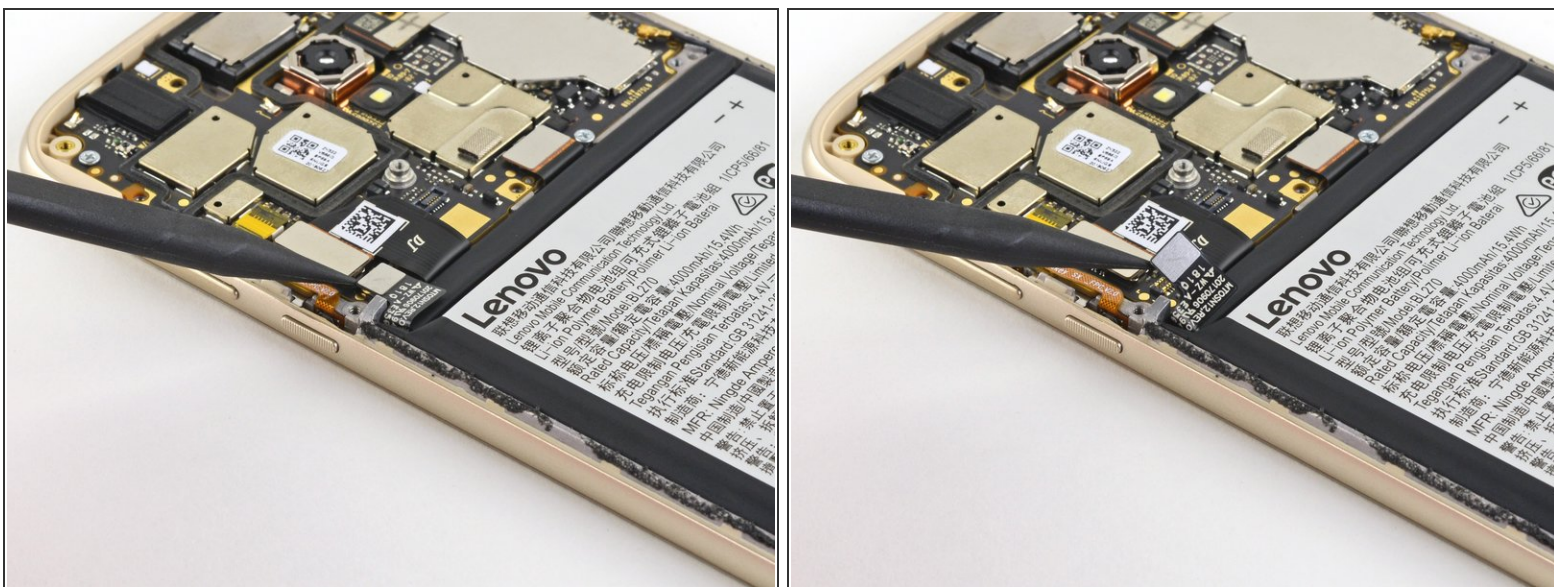
i A couple of screws are hidden under "S" stickers. It may help to remove these stickers with a pair of tweezers before removing the screws.

Step 15



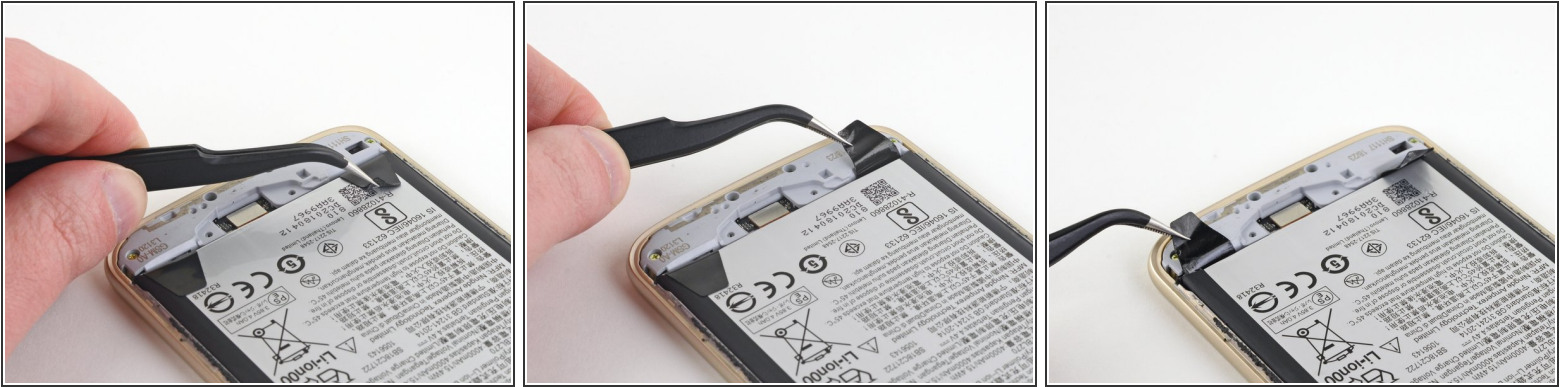
- Insert your fingernail or the flat end of a spudger into the notch at the bottom of the midframe.
- Pry up with your fingernail or the spudger to loosen the midframe and remove it.

Step 16



- Use the point of a spudger to pry up and disconnect the battery connector.

Step 17



- Use a pair of tweezers to peel up the two battery adhesive tabs at the bottom of the battery.

⚠ Be careful not to jab the battery with any sharp tools. A punctured battery may leak dangerous chemicals or catch fire.

Step 18



- Slowly pull the battery adhesive tabs to release them from the bottom of the battery.
- ⓘ Be sure to pull very slowly, giving the strips time to stretch and separate.
- ⓘ Pull at about a 45-degree angle to prevent the strips from dragging too much on the battery or the phone's frame.
- ⓘ If the adhesive strips break off, move on to the next step for an alternative battery removal method.

Step 19



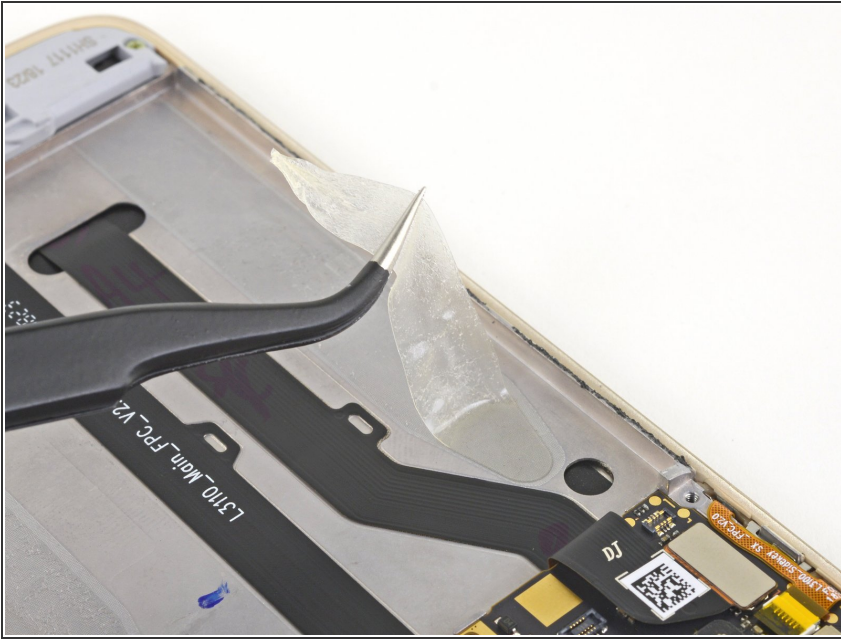
- If the adhesive strips broke and you can no longer access them, insert a plastic card in between the bottom of the battery and the phone's frame.
 - Carefully push the card down and inward to wedge it underneath the battery and pry it up.
- ⚠️ Avoid bending the battery while you perform this step. Go slowly and be patient with the remaining adhesive.

Step 20



- If you successfully removed the adhesive strips, insert the flat end of a spudger in between the bottom of the battery and the phone's frame.
- Lift up the battery to free it from its recess and remove it.

Step 21



- Before installing the new battery, be sure to remove any broken adhesive strips that were left behind.

Compare your new replacement part to the original part—you may need to transfer remaining components or remove adhesive backings from the new part before installing.

To reassemble your device, follow the above steps in reverse order.

Take your e-waste to an [R2 or e-Stewards certified recycler](#).

Repair didn't go as planned? Check out our [Motorola Moto E5 Answers community](#) for troubleshooting help.