



Motorola Moto G 1st Generation Teardown

This is the complete teardown of the most-famous motorola low cost smartphone: the moto G 2013

Written By: Maxim



INTRODUCTION

This is a good teardown when you will finally see what is under the black panel on the rear. It can also guide you to change the battery, if needed :)

Have a nice reading.



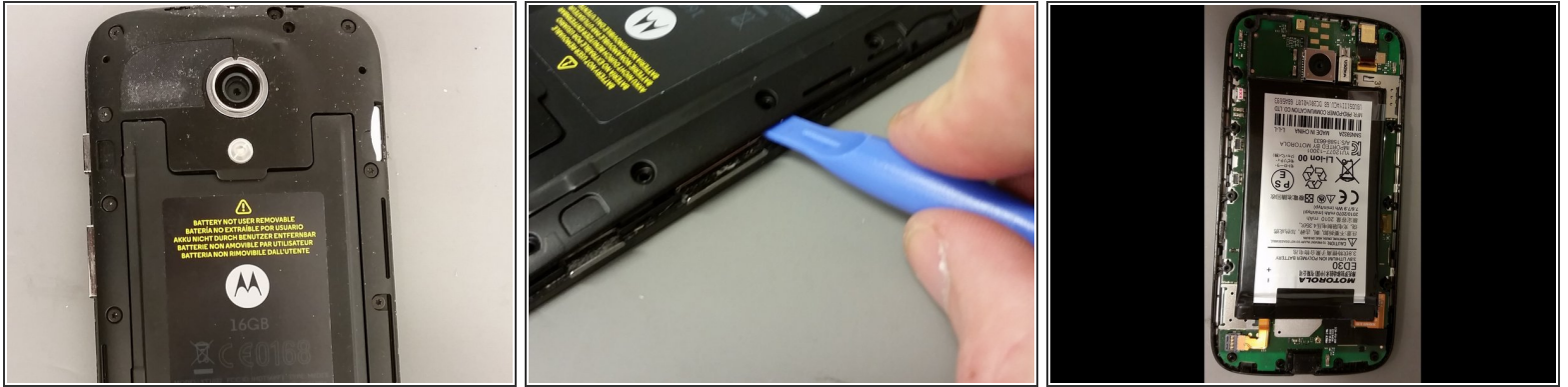
TOOLS:

- [T5 Torx Screwdriver](#) (1)

Some models, such as Republic Wireless phones, may need a T4 screwdriver.

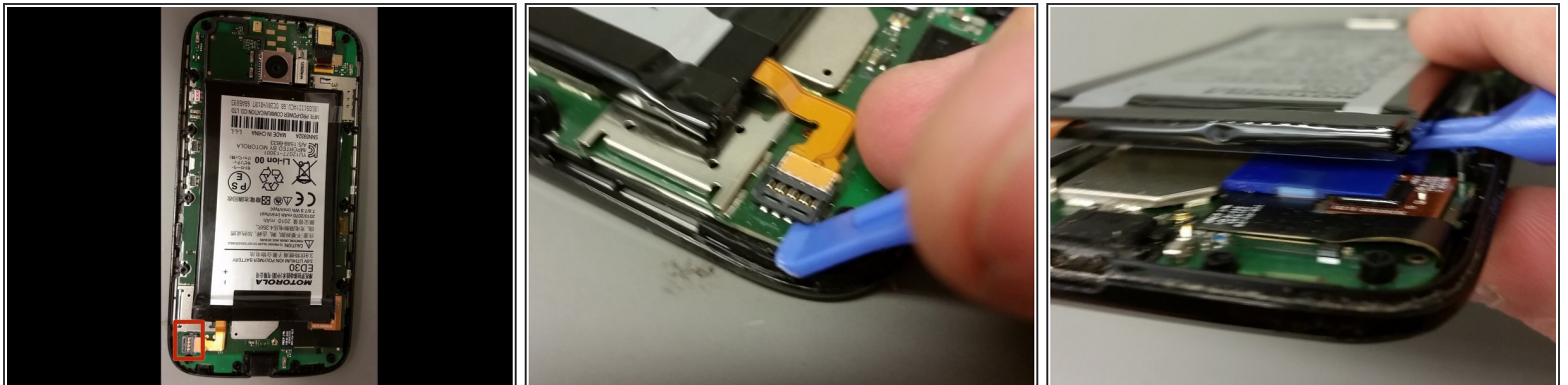
- [Small Needle Nose Pliers](#) (1)
 - [Spudger](#) (1)
-

Step 1 — Motorola Moto G 1st Generation Teardown



- After removing the back cover, use a torx T5 to remove all screws at the back
- Use an opening tool or plastic spudger to remove the outer frame.

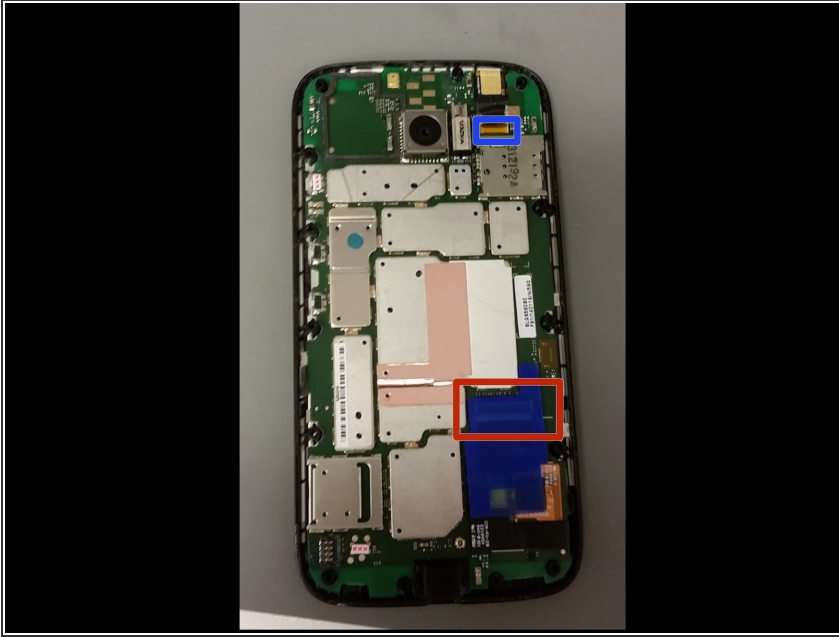
Step 2



- First we're going to remove the battery
- Using a plastic spudger, remove the battery connector from its socket.
- The battery will come off the motherboard when you put a little bit of pressure under it.

⚠ Don't bend the battery too much

Step 3



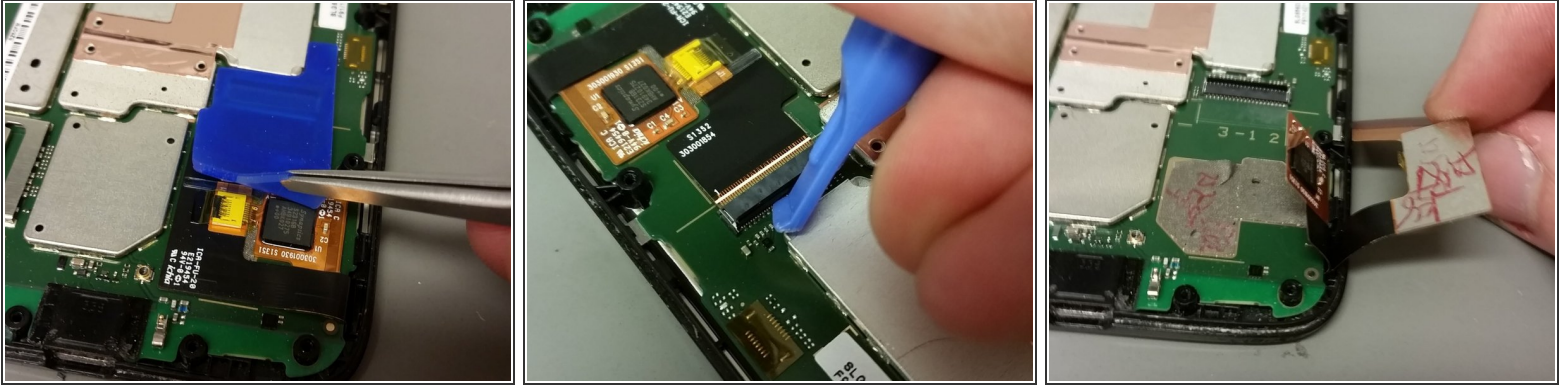
- The naked motherboard will reveal 2 connectors (apart from the battery-socket)
- This is the front-cam
- This is the digitizer/LCD flex

Step 4



- To remove the camera, use a pair of tweezers to remove the tape
- Next, use a plastic spudger to open up the socket.
- Pull the camera up (out of the lens-socket) and pull so the flex will come out of it's socket

Step 5



- To remove the LCD/Digitizer connection from its socket, remove the blue silicone cover
 - Next, use a plastic spudger to open the socket-lock
 - Carefully remove the flex cable.
- i** Although this flex seems to exist in 2 parts, it's actually removable as one. Only the wide flex has to be disconnected.

Step 6



- Now, it's only the motherboard that's left.
 - Use a fine plastic tool to pull the main board out
- !** There are no screws at this step
- !** Never put too much stress on the motherboard, find other places to put pressure if it doesn't cooperate immediately

Step 7



- All done
- The earpiece remains in the screen assembly. Take care when removing it from the screen. Push gently on it from the screen-side to lift it out.