



Motorola Moto G 2nd Generation Motherboard Replacement

Use this guide to replace the motherboard in a Motorola Moto G 2nd Generation.

Written By: Jared Geraets



INTRODUCTION

This guide will teach you how to replace the motherboard in your Moto G, in the event that it is malfunctioning. It may take a while, since the battery and SD/SIM card reader must be removed first, but all you will need are a T5 Torx screwdriver and a plastic opening tool.

TOOLS:

- [T5 Torx Screwdriver](#) (1)
 - [iFixit Opening Tools](#) (1)
 - [Tweezers](#) (1)
-

Step 1 — Battery



i Make sure your Moto G is turned off and that **any SIM or SD cards are removed** before beginning disassembly.

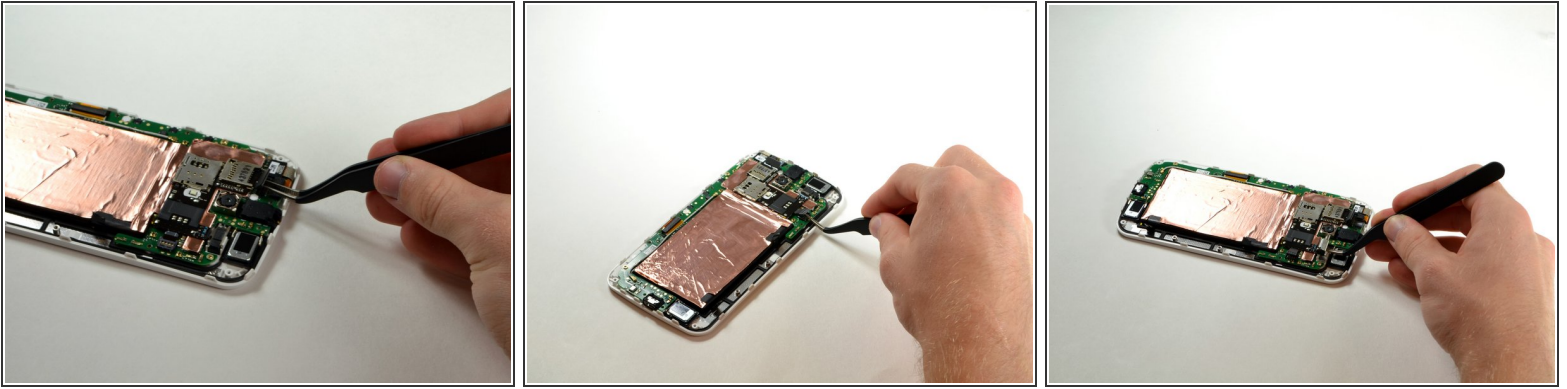
- Starting at the USB port on the bottom, remove the rear cover by prying it off with your finger.
- Work your way down the sides to avoid cracking the rear cover.

Step 2



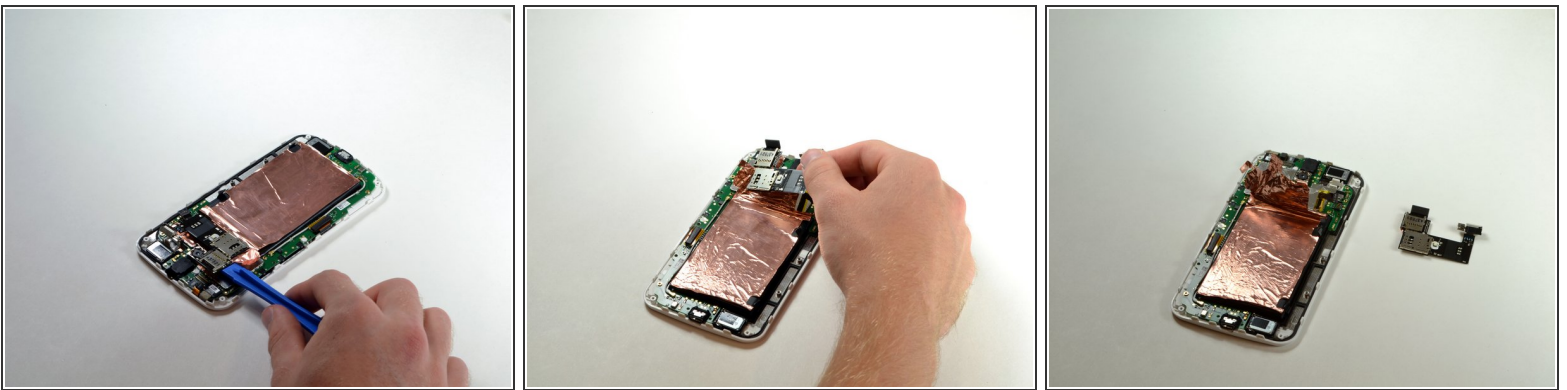
- Remove the eight 4.2 mm screws at the top and bottom of the phone using a T5 Torx screwdriver.
- Using the same screwdriver, remove the six 3.2 mm screws on the sides.
- Remove the next layer of the phone by prying it off with your fingers.

Step 3



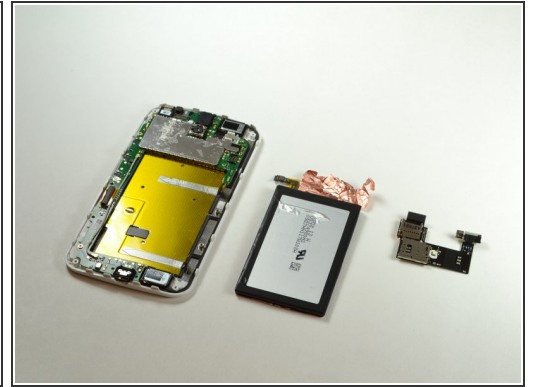
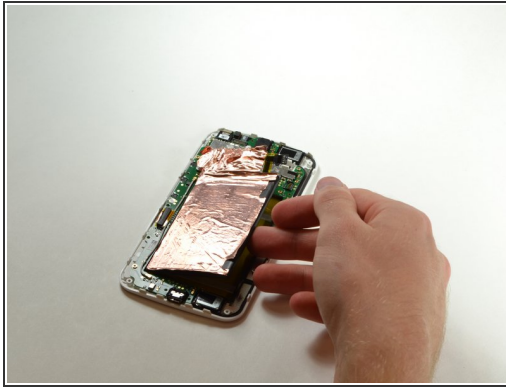
- Using a plastic opening tool or tweezers, disconnect the SIM/SD card reader at the top of the phone.
- Disconnect the battery connector by prying it off of the motherboard.
- Disconnect the vibration motor by prying its connector off of the motherboard.

Step 4



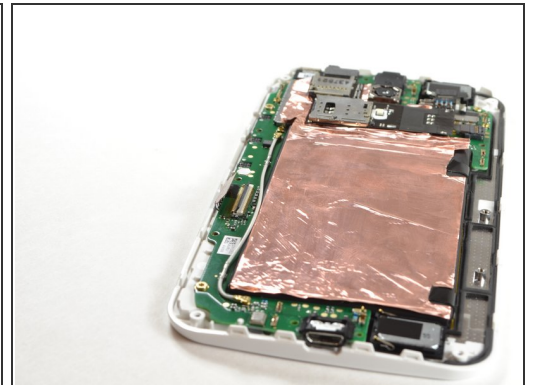
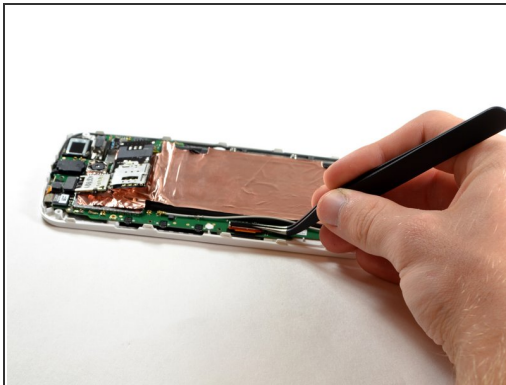
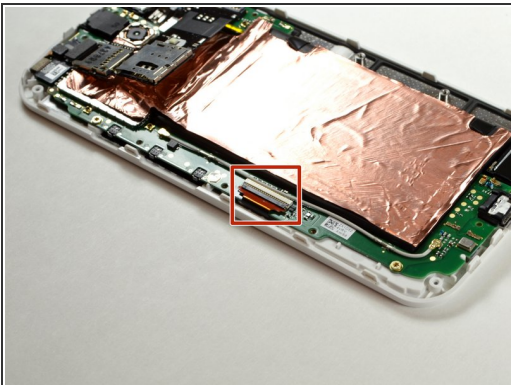
- Using a plastic opening tool, carefully pry off the entire SIM/SD card reader component.
- ⓘ Don't worry about ripping the copper foil a little bit, it is easy to put back on.
- ⚠ When reassembling the device, do not attempt to smooth the foil down with your finger. Metal foil can become sharp if folded in a certain way, and you may be cut.

Step 5



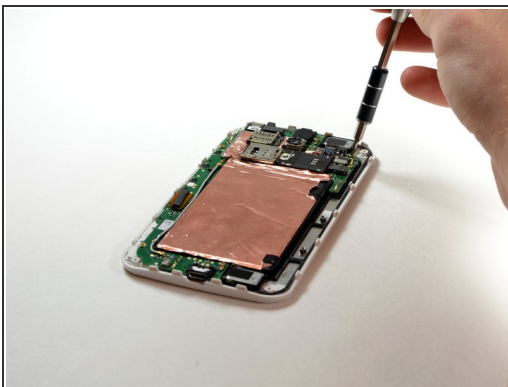
- Peel off the two black stickers on the right side of the battery using your fingers.
- Remove the battery by pulling the right side of it upwards.

Step 6 — Motherboard



- Remove LCD connector by lifting the black plastic flap.

Step 7



- Using a T5 Torx screwdriver, unscrew the three 2.2 mm screws holding the motherboard in place.

Step 8



- Carefully remove the motherboard.

To reassemble your device, follow these instructions in reverse order.