



A detailed photograph of a disassembled Motorola Droid ROKR V3 smartphone. The components are laid out on a white surface. At the top are three black plastic covers: the front face on the left, the back cover in the middle (showing the camera lens and a 'CE 0168' label), and the side/back cover on the right. Below these are the internal parts: a green printed circuit board (PCB) at the bottom left, a battery pack with orange tape at the top right, and various smaller components like the camera module, microphone, and connectors scattered in the center. The Motorola 'M' logo is visible on the side cover.

INTRODUCTION

[video: <https://www.youtube.com/watch?v=UONIB6mdPUs>]



TOOLS:

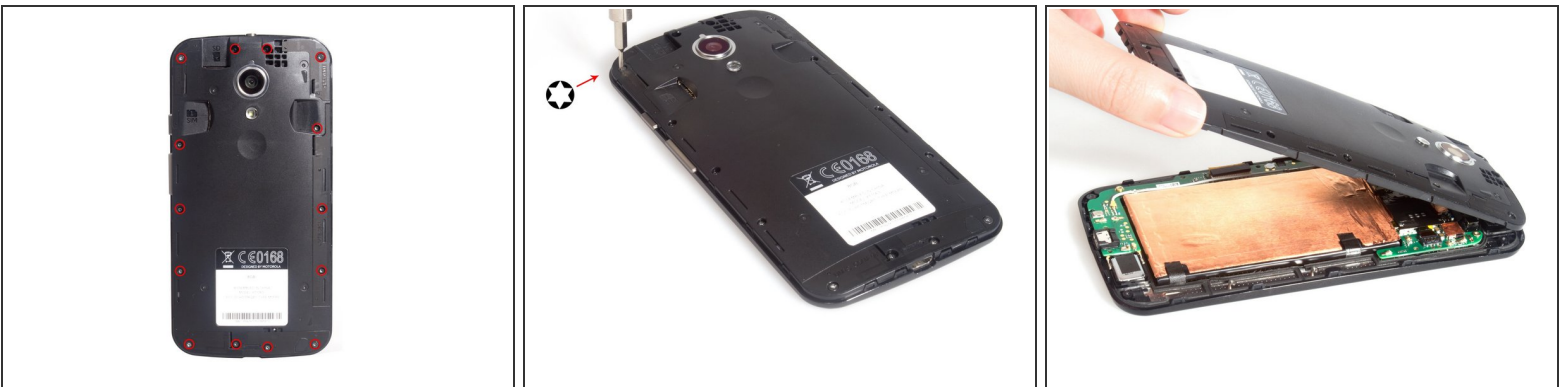
- [T5 Torx Screwdriver](#) (1)
 - [Spudger](#) (1)
 - [Tweezers](#) (1)
-

Step 1 — Motorola Moto G 2nd Generation Teardown



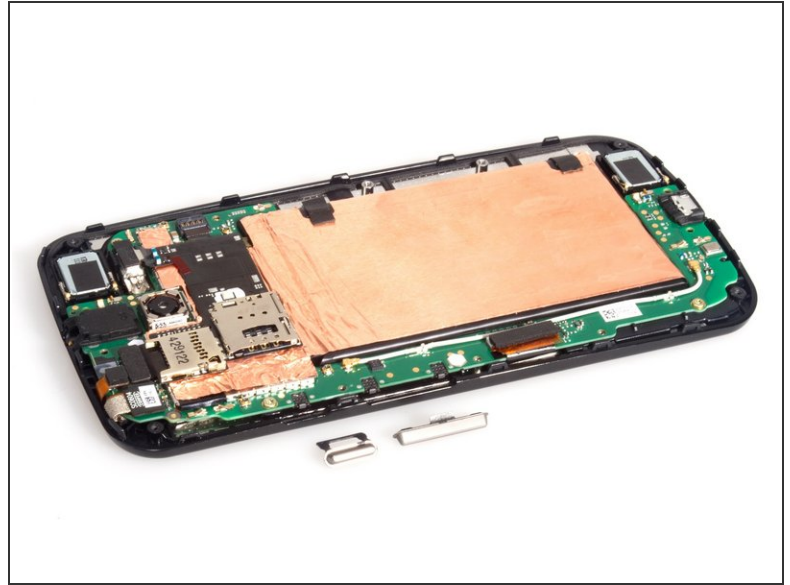
- Remove back cover. It's easy, no adhesive and no screws.

Step 2



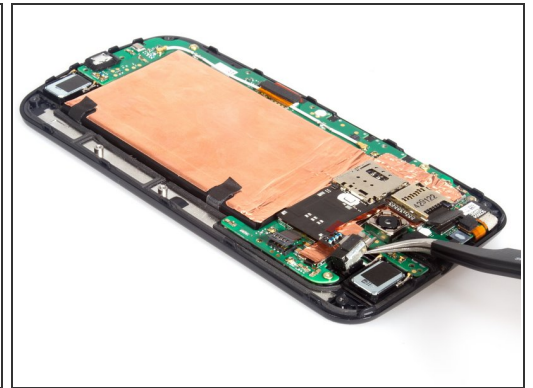
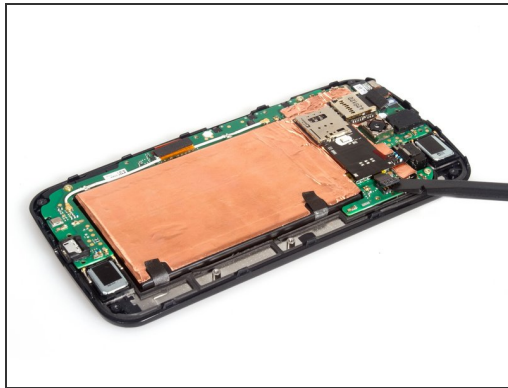
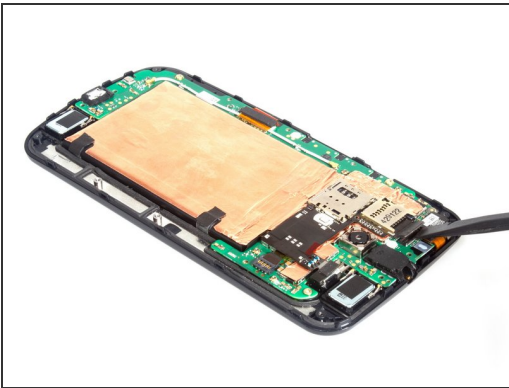
- Twist off all 14 screws together and remove the back frame easily. But the screws feature different lengths, you'd better remember their positions.

Step 3



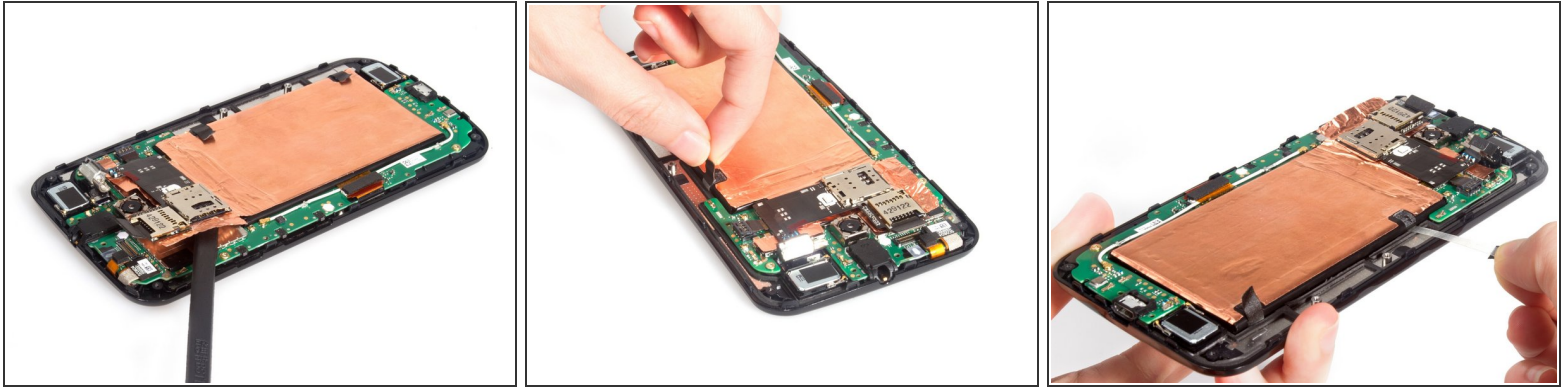
- Take away the volume button and power button.

Step 4



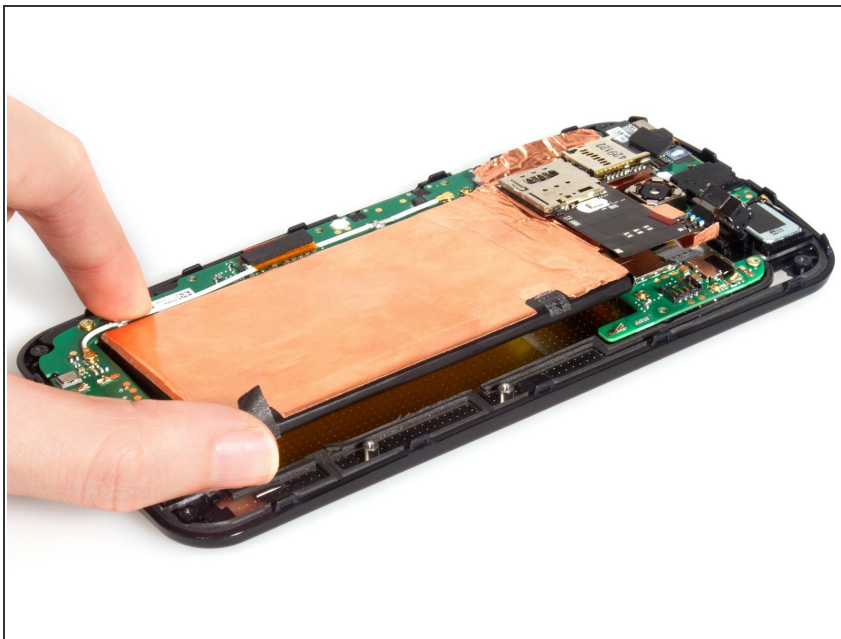
- Release SIM&SD card reader connector and battery connector. And get the vibrator motor free from adhesive.

Step 5



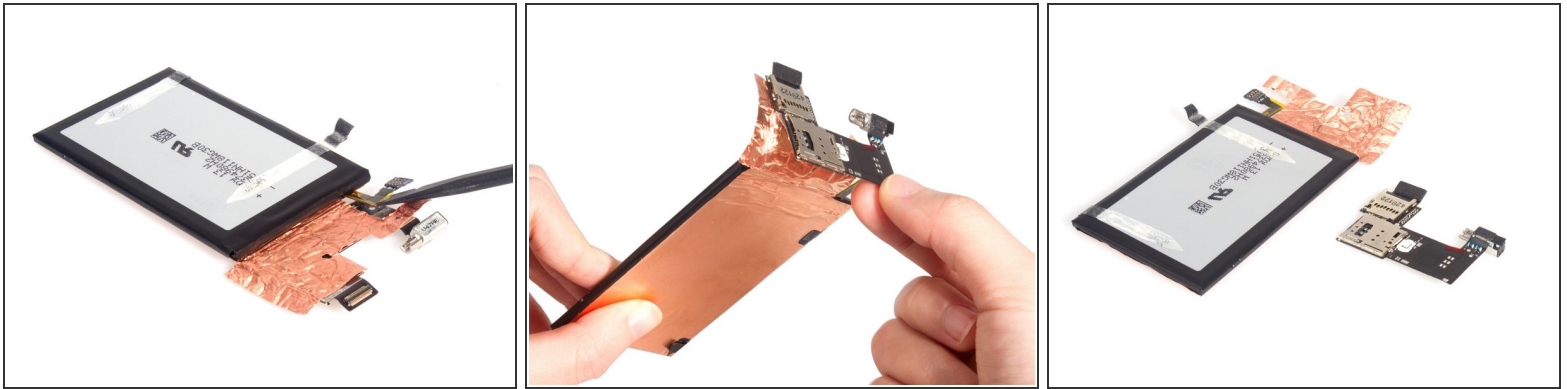
- Loosen the platinum foil under SIM & SD card reader from plate. And then drag the stickers out which fix the battery.

Step 6



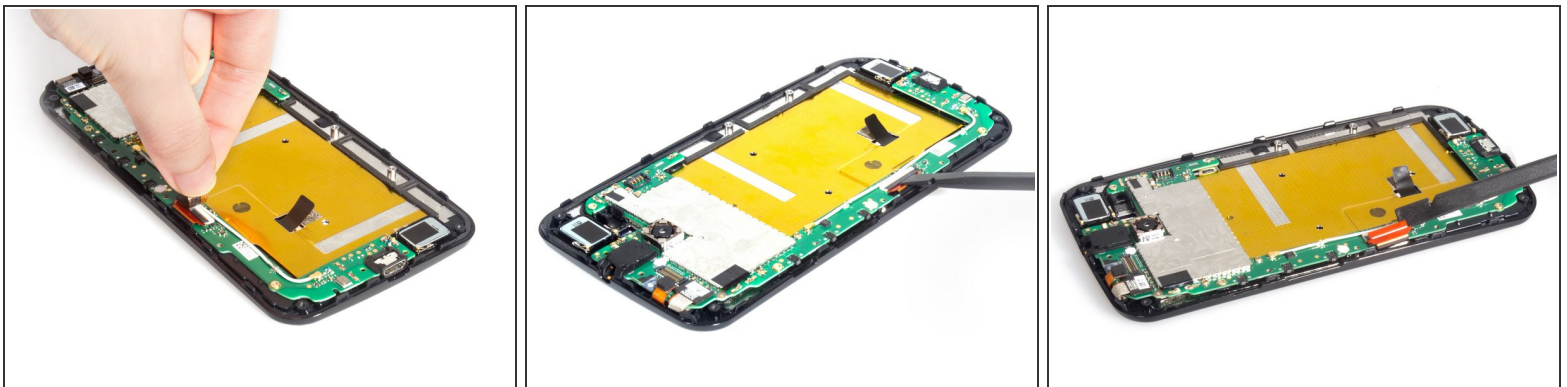
- At that time, remove the battery with SIM & SD card reader assembly together.

Step 7



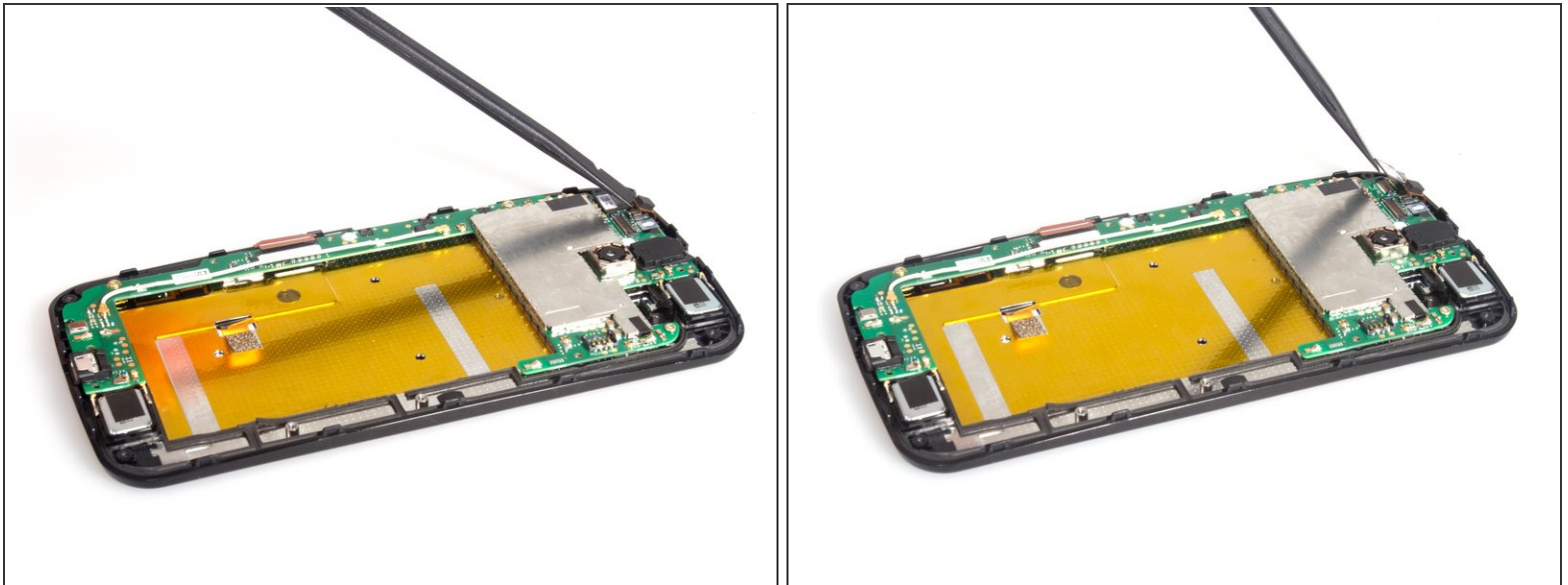
- Separate battery and SIM & SD card reader assembly.

Step 8



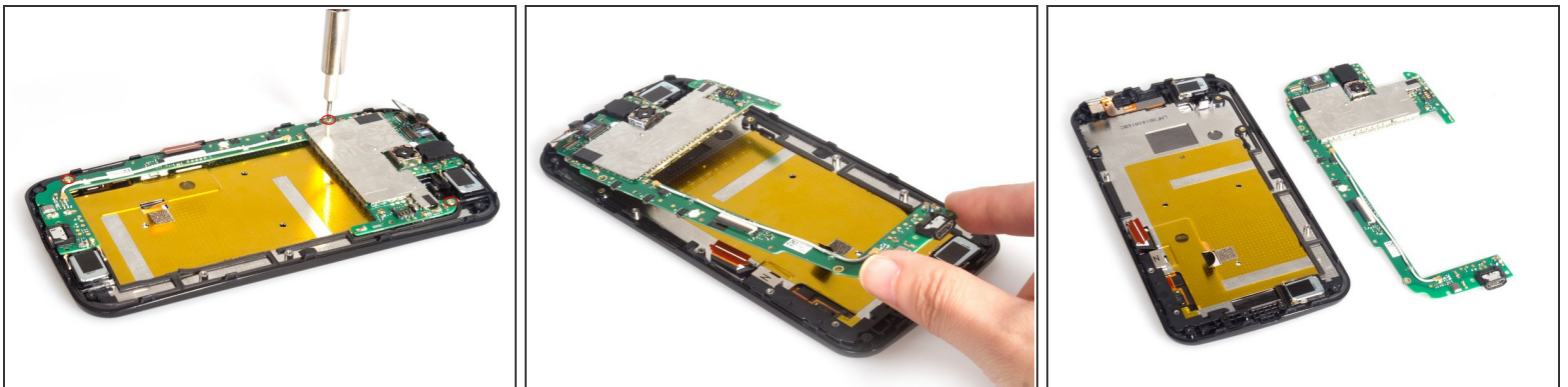
- Release LCD screen connector from motherboard.

Step 9



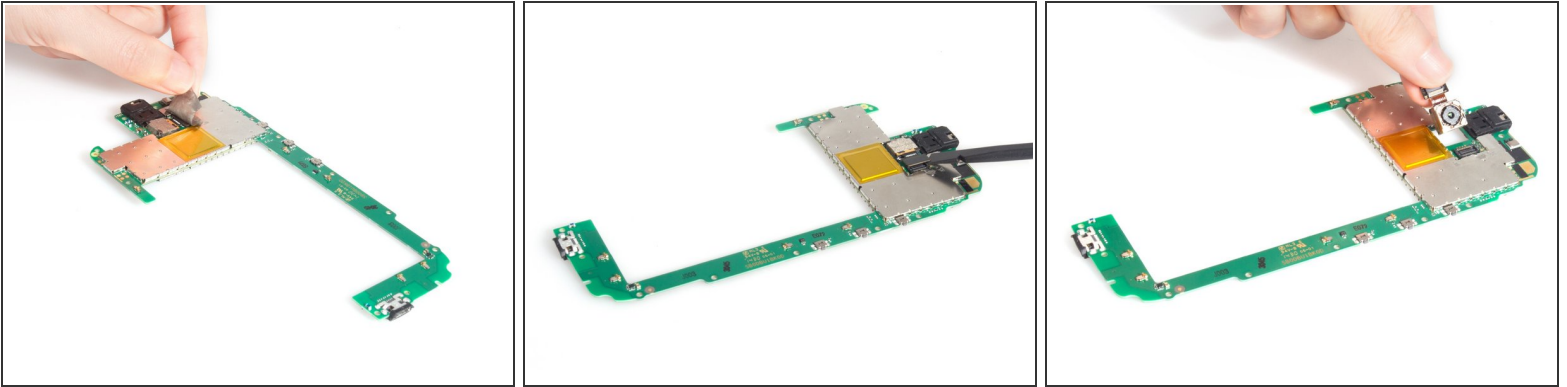
- Release sensor flex connector and front camera connector respectively.

Step 10



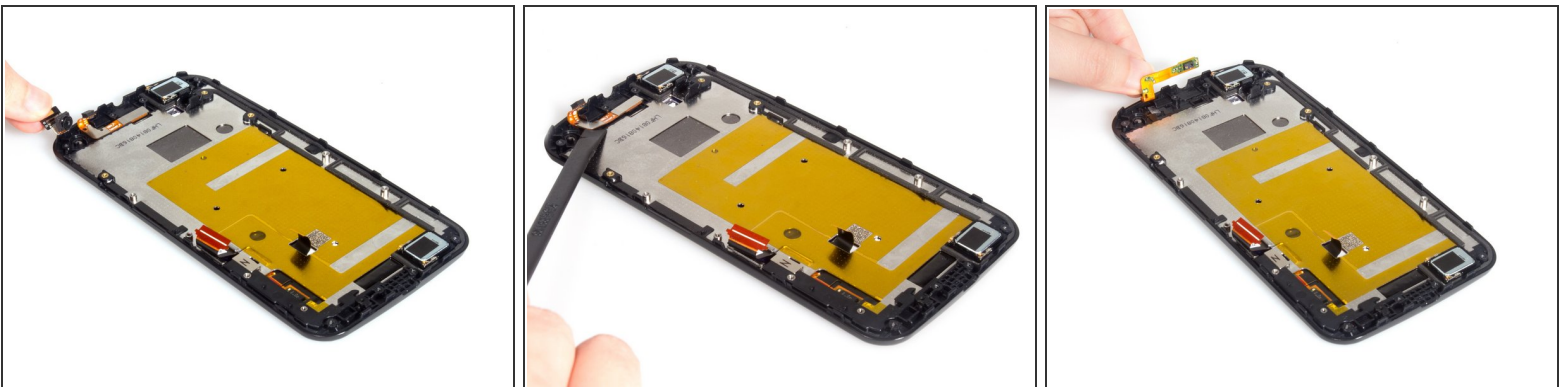
- Remove screws on the motherboard and the motherboard can be removed easily.

Step 11



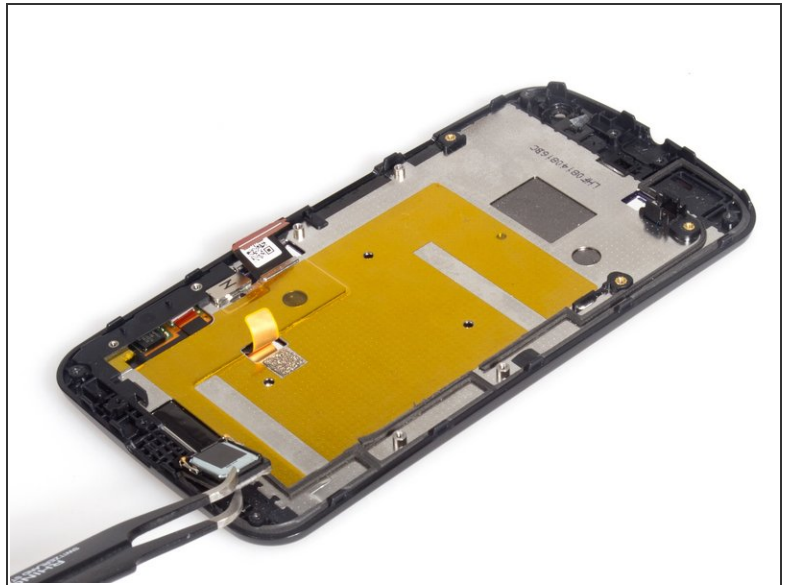
- Remove rear camera.

Step 12



- Remove front camera and sensor cable.

Step 13



- Remove earpiece and loudspeaker.

Step 14



- Done.

To reassemble your device, follow these instructions in reverse order.