



# Motorola Moto G4 Play Midframe Replacement

Motorola Moto G4 Play Midframe Replacement: Replace the midframe in a Motorola Moto G4 Play if damaged, or to access the internal components.

Written By: Paola Rossi



---

## INTRODUCTION

Use this guide to replace the midframe of your Motorola Moto G4 Play if damaged, or to access the internal components. Consider using a magnetic mat to organize the screws that will be removed from the device.



### TOOLS:

- [iFixit Opening Tools](#) (1)
  - [Tweezers](#) (1)
  - [Phillips #000 Screwdriver](#) (1)
-

## Step 1 — Battery



- Open case with a plastic opening tool that has the same size as the divot located at the bottom left of the phone. If you don't have an opening tool, use your finger nails.

## Step 2



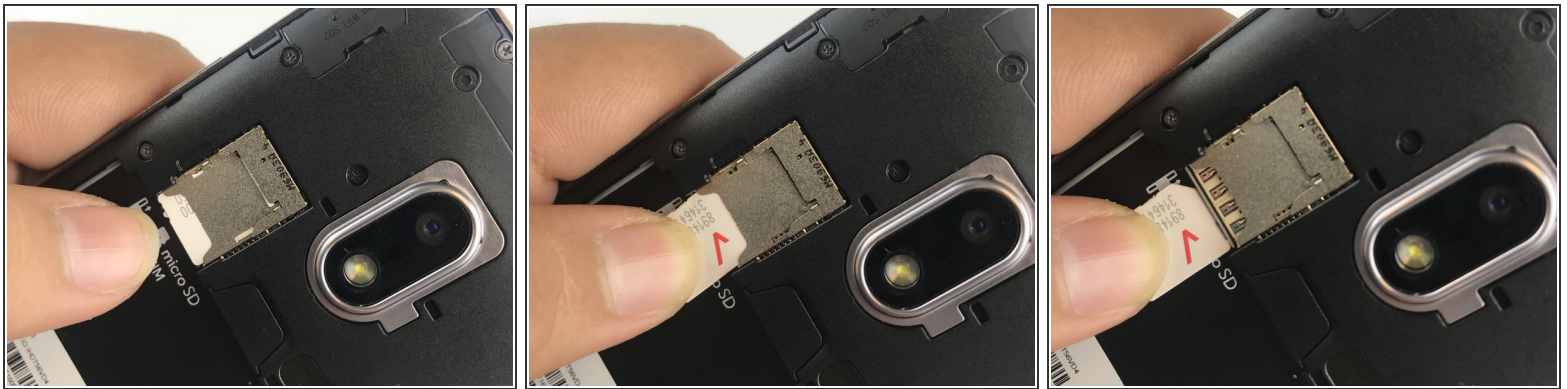
- Lift the case by the nearest corner to the divot and remove it from the phone.

## Step 3



- Place the plastic opening tool into the notch located at the bottom of the battery compartment, and lift upwards. If you don't have an opening tool, use your finger nails.
- Remove battery from your phone.

## Step 4 — Midframe



- Remove any SIM card and/or memory card present using your hand.



## Step 5



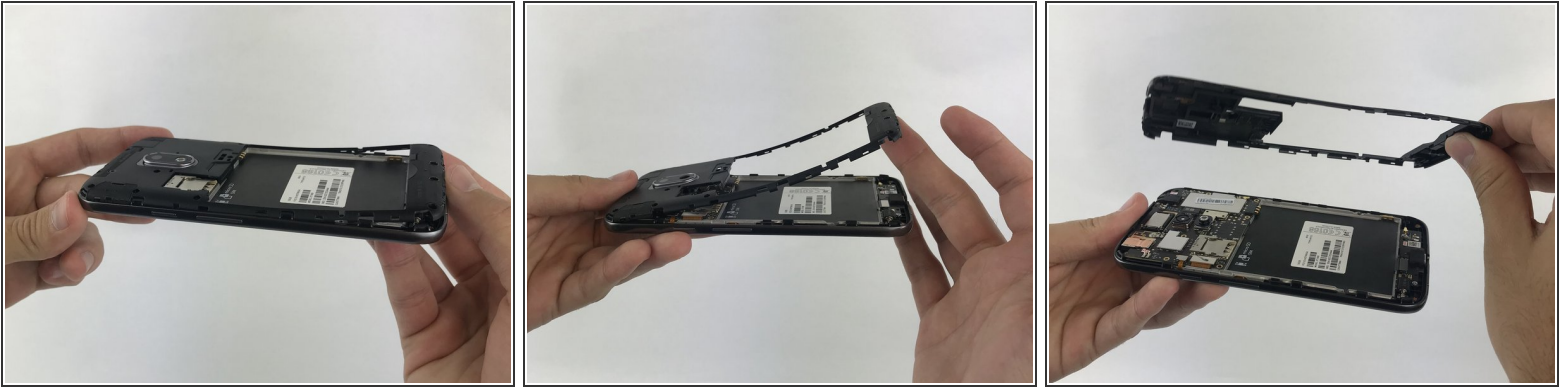
- Remove the small silicon cover at the bottom right of the camera using tweezers.

## Step 6



- Remove the sixteen (16) 3mm Phillips PH000 screws securing the midframe.
- i* Some phones have two shorter screws, one on each side of the battery (double marked with orange circles at left). If your device has these shorter screws, make sure they go back in their original holes.

## Step 7



- Remove the back panel assembly with your hands.

To reassemble your device, follow these instructions in reverse order.